

# Model:A-1055S 8DI,8DO Remot I/O Modules User's Manual



## 1.Description

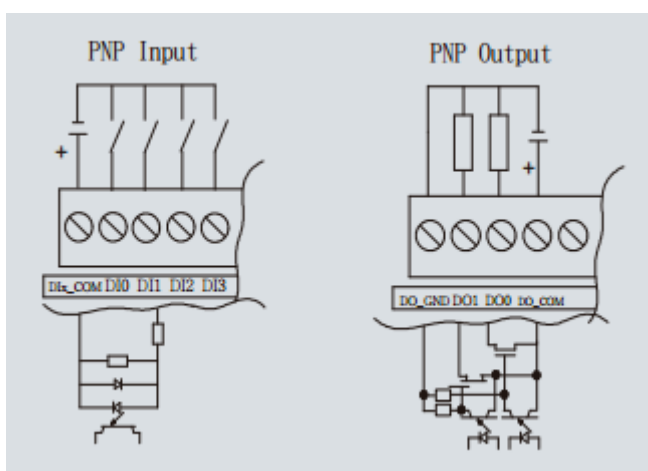
Input::8DI (PNP), Logic Level0:+1VDC

Logic Level1:+3.5~30VDC

Output:8DO(Source Output, Transistor)

Power supply:10~30VDC

Diagram:



## 2. Features

- u RS-485 Interface
- u Supports Modbus RTU / ASCII
- u LED Indicators
- u Isolation voltage: 5000 V DC
- u Wide operation temperature : -20 ~ +75 °C
- u Dual watchdog timer
- u Surge , EFT and ESD protection
- u Free PC software "Yotta Utility"

### 3.Pin Assignment

Item	Pin	Description	Item	Pin	Description
1	DI0~7 COM	Input common(+)	26	DO 4~7 GND	DO4~7 GND (-)
2	DI0	Input channel 0	25	DO 7	Output channel 7
3	DI1	Input channel 1	24	DO 6	Output channel 6
4	DI2	Input channel 2	23	DO 5	Output channel 5
5	DI3	Input channel 3	22	DO 4	Output channel 4
6	DI4	Input channel 4	21	DO 4~7 COM	DO4~7 COMMON (+)
7	DI5	Input channel 5	20	NC	No Use
8	DI6	Input channel 6	19	DO 0~3 GND	DO0~3 GND (-)
9	DI7	Input channel 7	18	DO 3	Output channel 3
10	(Y)DATA+	RS-485 +	17	DO 2	Output channel 2
11	(G)DATA-	RS-485 -	16	DO 1	Output channel 1
12	(R)+VS	+10~30VDC	15	DO 0	Output channel 0
13	(B)GND	GND	14	DO 0~3 COM	DO0~3 COMMON (+)

### 4. Hardware Installation

Connect an twisted-pair cable to A-1055S unit if connecting to a converter or direct to the PC(RS-485) as figure1.

Connect the power adapter to A-1055S and other apply power. Power from other device.(+10--+30VDC).

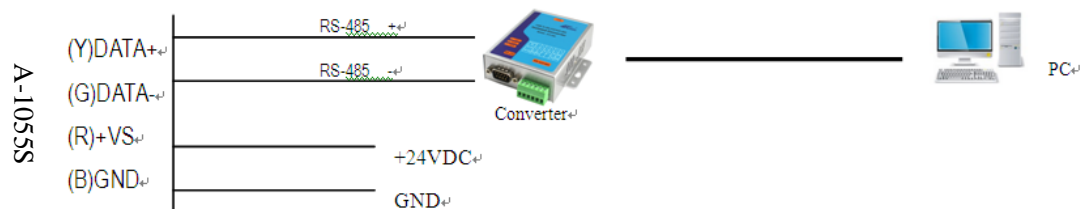


Figure 1

### 5. Software Configure

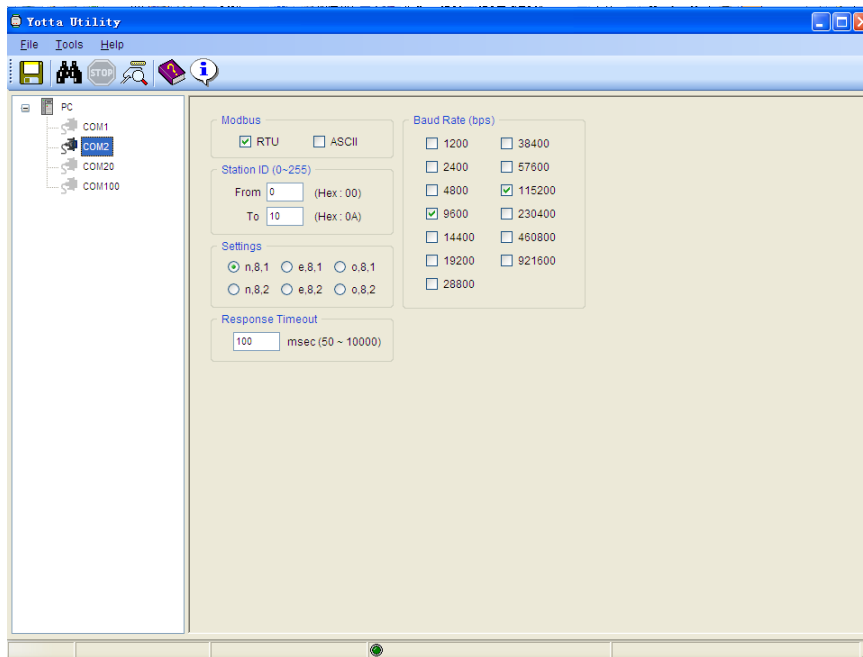
Install Yotta Utility.

Note: Be sure you have administrative rights & disable firewalls in windows XP.

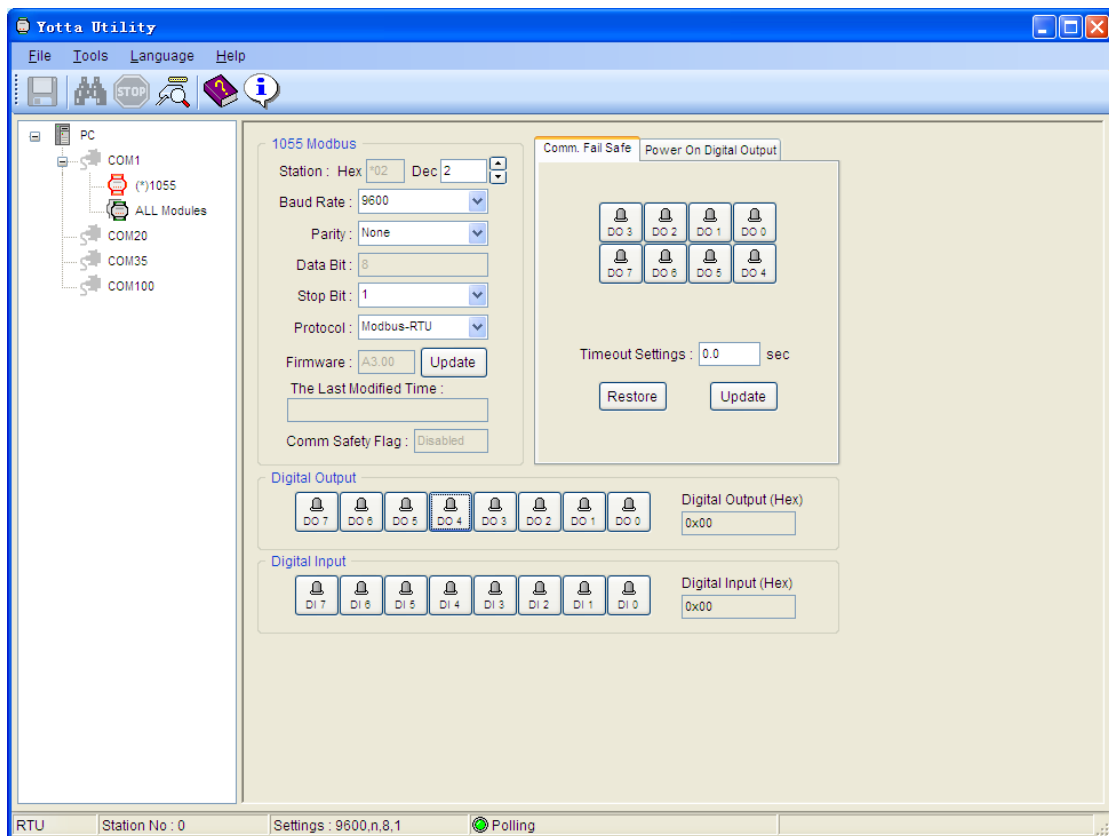
Be sure you have connect the A-1055S.

In the meantime , find the switch at the bottom of A-1055S, then turn the switch to Init.

Then open the software Yotta Utility.



Choose the COM correctly, click the search button. You can meet this page.



In the Init mode , all of the module's parameters and relative values can be set .

If you want to get the technical data in more detail ,please reference the contents of Yotta Utility.

## Normal Mode

If you turn the switch to Normal , A-1055S will run normally . In this mode , A-1055's parameters and relative values cannot be

set .

Note: If you change the switch(Init/Normal) , A-1055 must be powered off and re-upelectricity . Otherwise the state of A-1055S wouldn't change.

## 6. ModBus Address Mapping

Supported ModBus Code: 01/02/05/15(Reabable & writable in normal & Initial mode) R :readable W :writable

Address	Description	Normal	Init	Note(value)
00001~00008	DI0~7 Input Value	R	R	(0/1)
00017~00020	DO0~4 Output Value	R/W	R/W	(0/1)
00033~00036	DO0~4 Power On Output Value	R	R/W	(0/1)
00049~00052	DO0~4 Communication Fail Safe Value	R	R/W	(0/1)

Supported ModBus Code: 03/04/06 (Reabable & writable in normal & Initial mode) R :readable W :writable

Address	Description	Normal	Init	Note(value)
40065	Communication Fail Safe Time Setting Value	R	R/W	0.0~6553.5 sec
40223	Module internal temperature	R	R	
40224	Module History temperature (Min) °C	R	R	
40225	Module History temperature (Max) °C	R	R	

Supported ModBus Code: 03/04/06 (Reabable & writable in normal & Initial mode) R :readable W :writable

Address	Description	Normal	Init	Note(value)
40300	Module's ID in normal mode	R	R/W	1~255
40301	Protocol in normal mode	R	R/W	0 : RTU 1 : ASCII
40302	Baud rate in normal mode	R	R/W	
40303	Parity option in normal mode	R	R/W	0 : None 1 : Odd 2 : Even
40304	Stop bits in normal mode	R	R/W	0 : 1 bit 1 : 2 bit
40305	Normal Mode Time Out Setting	R	R/W	0~65535 msec