

IGS-9084GP-LA



IGS-9084GP-LA

➔ Industrial Slim 12-port managed Gigabit Ethernet switch with 8x10/100/1000Base-T(X) ports and 4x100/1000Base-X, SFP socket, Generic version

Features

- Support **O-Ring** (recovery time < 30ms) and MSTP(RSTP/STP compatible) for Ethernet Redundancy
- **Open-Ring** support the other vendor's ring technology in open architecture
- **O-Chain** allow multiple redundant network rings
- Support standard IEC 62439-2 **MRP^{NOTE}** (Media Redundancy Protocol) function
- Support IPV6 new internet protocol version
- Support Modbus TCP protocol
- Support IEEE 802.3az **Energy-Efficient Ethernet** technology
- Provided HTTPS/SSH protocol to enhance network security
- Support SMTP client and NTP server protocol
- Support IP-based bandwidth management
- Support application-based QoS management
- Support Device Binding security function
- Support DOS/DDOS auto prevention
- IGMP v2/v3 (IGMP snooping support) for filtering multicast traffic
- Support SNMP v1/v2c/v3 & RMON & 802.1Q VLAN Network Management
- Support ACL, TACACS+ and 802.1x User Authentication for security
- Support 9.6K Bytes Jumbo Frame
- Syslog/SNMP Trap notification for warning of unexpected event
- Support **DBU-01** backup unit device to quickly backup/restore configuration
- Web-based ,SNMP v1/v2c/v3, Telnet, Console (CLI), and Windows utility (**Open-Vision**) configuration
- Support LLDP Protocol
- Robust EMS design, provide **8KV ESD** and **4KV Surge** protection
- Rigid IP-30 housing design
- DIN-Rail and wall mounting enabled



EtherNet/IP[®] RoHS Lead Free CE FC

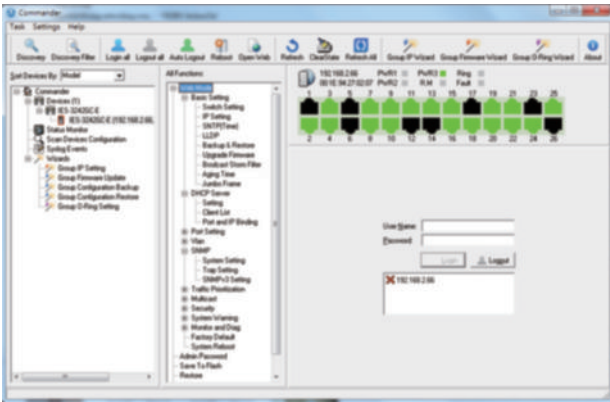
Introduction

IGS-9084GP-LA is slim type managed Ethernet switch with 8x10/100/1000Base-T(X) ports and 4x100/1000Base-X SFP ports. With completely support of Ethernet Redundancy protocol, **O-Ring** (recovery time < 30ms over 250 units of connection) and MSTP (RSTP/STP compatible) can protect your mission-critical applications from network interruptions or temporary malfunctions with its fast recovery technology. And support wide operating temperature from -40°C to 75°C. IGS-9084GP-LA can also be managed centralized and convenient by Open-Vision, Except the Web-based interface, Telnet and console (CLI) configuration. Therefore, the switch is one of the most reliable choice for highly-managed and Fiber Ethernet application.

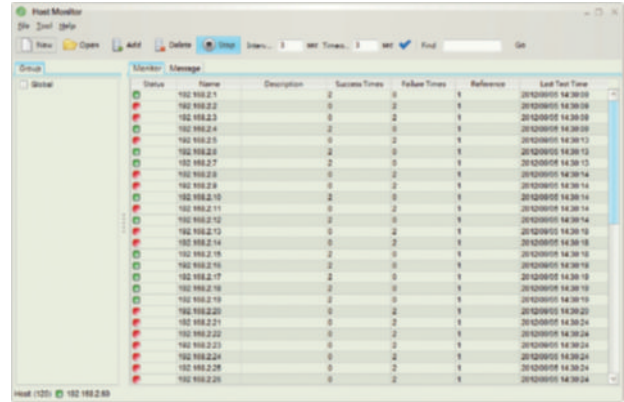
***NOTE: This function is available by request only**

Open-Vision

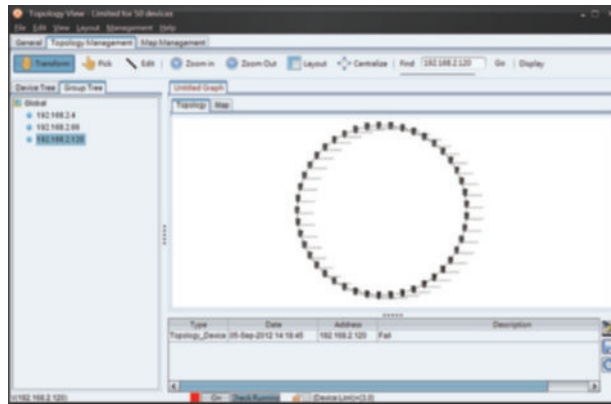
ORing's switches are intelligent switches. Different from other traditional redundant switches, ORing provides a set of Windows utility (Open-Vision) for user to manage and monitor all of industrial Ethernet switches on the industrial network.



Commander

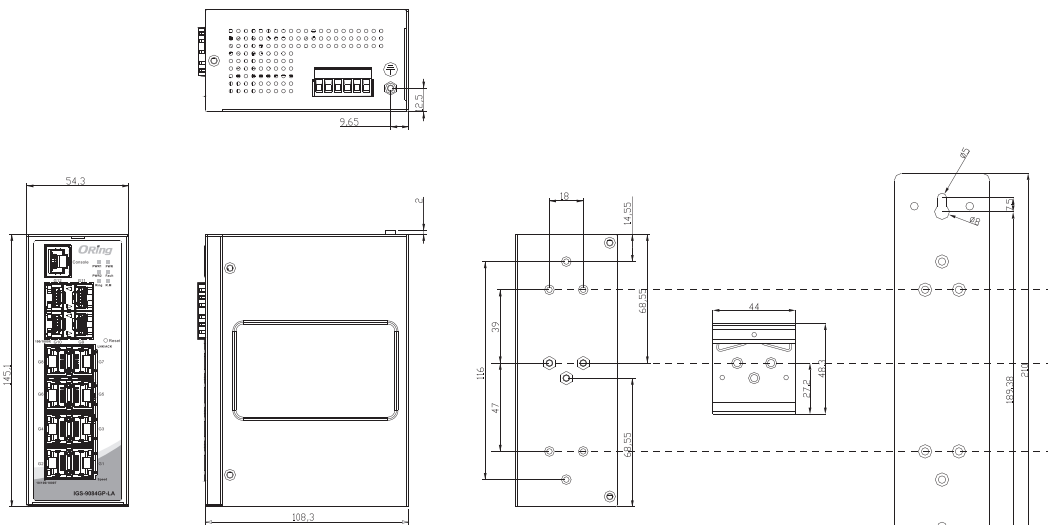


Host Monitor



Topology View

Dimensions



(Unit=mm)

Specifications

| ORing Switch Model | IGS-9084GP-LA |
|---|--|
| Physical Ports | |
| 10/100/1000Base-T(X) with Ports in RJ45 Auto MDI/MDIX | 8 |
| 100/1000Base-X with SFP port | 4 |
| Technology | |
| Ethernet Standards | IEEE 802.3 for 10Base-T IEEE 802.3u for 100Base-TX and 100Base-FX IEEE 802.3ab for 1000Base-T IEEE 802.3z for 1000Base-X IEEE 802.3x for Flow control IEEE 802.3ad for LACP (Link Aggregation Control Protocol) IEEE 802.1p for COS (Class of Service) IEEE 802.1Q for VLAN Tagging IEEE 802.1D for STP (Spanning Tree Protocol) IEEE 802.1w for RSTP (Rapid Spanning Tree Protocol) IEEE 802.1s for MSTP (Multiple Spanning Tree Protocol) IEEE 802.1x for Authentication IEEE 802.1AB for LLDP (Link Layer Discovery Protocol) |
| MAC Table | 8k |
| Priority Queues | 8 |
| Processing | Store-and-Forward |
| Share Data Buffer | 4Mbit |
| Switch Properties | Switching latency: 7 us Switching bandwidth: 24Gbps Throughput (packet per second) : 17.856Mpps@64Bytes packet Max. Number of Available VLANs: 4096 VLAN ID Range : VID 0 to 4095 IGMP multicast groups: 256 for each VLAN Port rate limiting: User Define |
| Jumbo frame | Up to 9.6K Bytes |
| Security Features | Device Binding security feature Enable/disable ports, MAC based port security Port based network access control (802.1x) VLAN (802.1Q) to segregate and secure network traffic Radius centralized password management SNMPv3 encrypted authentication and access security Https / SSH enhance network security |
| Software Features | STP/RSTP/MSTP (IEEE 802.1D/w/s) Redundant Ring (O-Ring) with recovery time less than 30ms TOS/Diffserv supported Quality of Service (802.1p) for real-time traffic VLAN (802.1Q) with VLAN tagging IGMP Snooping IP-based bandwidth management Application-based QoS management DOS/DDOS auto prevention Port configuration, status, statistics, monitoring, security DHCP Server/Client/Relay SMTP Client Modbus TCP NTP server |
| Network Redundancy | O-Ring Open-Ring O-Chain MRP* NOTE MSTP (RSTP/STP compatible) |
| RS-232 Serial Console Port | RS-232 in RJ45 connector with console cable. 115200bps, 8, N, 1 |
| LED indicators | |
| Power Indicator (PWR) | Green : Power LED x 3 |
| Ring Master Indicator (R.M.) | Green : Indicates that the system is operating in O-Ring Master mode |
| O-Ring Indicator (Ring) | Green : Indicates that the system operating in O-Ring mode Green Blinking : Indicates that the Ring is broken. |
| Fault Indicator (Fault) | Amber : Indicate unexpected event occurred |

*NOTE: This function is available by request only

| | |
|--|---|
| 10/100/1000Base-T(X) RJ45 Port Indicator | Green for Port LINK/ACT indicator Dual color LED for speed indicator: Green for 1000Mbps / Amber for 100Mbps / off-light for 10Mbps |
| 100/1000Base-X SFP Port Indicator | Green for port Link/Act. |
| Fault contact | |
| Relay | Relay output to carry capacity of 1A at 24VDC |
| Reset Function | |
| Reset Button | < 5 sec: System reboot, > 5 sec: Factory default |
| Power | |
| Redundant Input power | Dual DC inputs. 12–48VDC on 6-pin terminal block |
| Power consumption (Typ.) | 13 Watts |
| Overload current protection | Present |
| Reverse Polarity Protection | Present |
| Hi-POT | 1.5KV AC |
| Physical Characteristic | |
| Enclosure | IP-30 |
| Dimension (W x D x H) | 54.3 (W) x 108.3 (D) x 145.1 (H) mm (2.13 x 4.26 x 5.71 inches) |
| Environmental | |
| Storage Temperature | -40 to 85°C (-40 to 185°F) |
| Operating Temperature | -40 to 75°C (-40 to 167°F) |
| Operating Humidity | 5% to 95% Non-condensing |
| Regulatory approvals | |
| EMC | CE EMC (EN 55024, EN 55032), FCC Part 15 B |
| EMI | EN 55032, CISPR32, EN 61000-3-2, EN 61000-3-3, FCC Part 15 B class A |
| EMS | EN 55024 (IEC/EN 61000-4-2 (ESD): Contact 8KV, Air 10KV), IEC/EN 61000-4-3 (RS), IEC/EN 61000-4-4 (EFT Power 2KV, Single 2KV), IEC/EN 61000-4-5 (Surge: Power 4KV, RJ45 4KV), IEC/EN 61000-4-6 (CS), IEC/EN 61000-4-8(PFMF), IEC/EN 61000-4-11 (DIP)) |
| Shock | IEC60068-2-27 |
| Free Fall | IEC60068-2-31 |
| Vibration | IEC60068-2-6 |
| Safety | EN60950-1 |
| MTBF | 551478hrs |
| Warranty | 5 years |

Ordering Information

IGS-90 **A** **B** **CC** - **L** **A**

| Code Definition | 10/100/1000Base-T(X) Port Number | 100/1000Base-X SFP Port Number | Additional Port Type | Version |
|-----------------|----------------------------------|--------------------------------|---------------------------------|--------------------------|
| Option | - 8 : 8 ports | - 4 : 4 ports | - GP : Gigabit SFP ports | L : non-IEEE 1588 |

| Available Model | Model Name | Description |
|-----------------|---------------|---|
| | IGS-9084GP-LA | Industrial Slim 12-port managed Gigabit Ethernet switch with 8x10/100/1000Base-T(X) ports and 4x100/1000Base-X, SFP socket, Generic version |

Packing List

- IGS-9084GP-LA x 1
- DIN-Rail Kit x 1
- ORing Tool CD x 1
- Wall-mount Kit x 2
- Quick Installation Guide x 1
- Console Cable x 1

Optional Accessories (Can be purchased separately)

- Open-Vision M500 : Powerful Network
- Management Windows Utility Suit, 500 IP devices
- DBU-01 : backup unit device
- SFP100 series : 100Mbps SFP optical transceiver
- SFP 1G series : 1Gbps SFP optical transceiver

Industrial Ethernet Switch

Industrial Media Converter

Industrial Device Server

Industrial Wireless Access Point

Industrial Cellular VPN Router

Industrial M2M Gateway

Accessories

Network Management Software