

F1X03 Series User Manual	Documentation No.	Product Version	Page
	Product Name:		Total:

# F1X03 Series User Manual

The user manual is suitable for the following model:

Model	Product Type
F1003	GSM MODEM
F1103	GPRS MODEM
F1203	CDMA MODEM
F1303	EDGE MODEM
F1403	WCDMA MODEM
F1503	TD-SCDMA MODEM
F1603	EVDO MODEM



Xiamen Four-Faith Communication Technology Co., Ltd.

Add: J1-J3,3rd Floor,No.44,GuanRi Road,SoftWare

Park,XiaMen,China Zip Code:361008

Tel: +86 592-6300326 , 6300325, 6300324

Fax: +86 592-5912735

<http://www.fourfaith.com>





## Files Revised Record

Date	Version	Remark	Author

## Copyright Notice

All contents in the files are protected by copyright law, and all copyrights are reserved by Xiamen Four-Faith Communication Technology Co., Ltd. Without written permission, all commercial use of the files from Four-Faith are forbidden, such as copy, distribute, reproduce the files, etc., but non-commercial purpose, downloaded or printed by individual (all files shall be not revised, and the copyright and other proprietorship notice shall be reserved) are welcome.

## Trademark Notice

Four-Faith、四信、、、、 are all registered trademarks of Xiamen Four-Faith Communication Technology Co., Ltd., illegal use of the name of Four-Faith, trademarks and other marks of Four-Faith is forbidden, unless written permission is authorized in advance.



# Contents

Chapter 1 Brief Introduction of Product .....	6
1.1 General .....	6
1.2 Features and Benefits .....	6
1.3 Working Principle .....	7
1.4 Specifications .....	7
Chapter 2 Installation Introduction .....	10
2.1 General .....	10
2.2 Encasement List .....	10
2.3 Installation and Cable Connection .....	10
2.4 Power .....	11
2.5 Indicator Lights Introduction .....	11
Chapter 3 Dial-Up Settings .....	13
3.1 MODEM Connection .....	13
3.2 Dial-Up Settings .....	13
Chapter 4 SMS Test .....	29
Chapter 5 Appendix .....	32

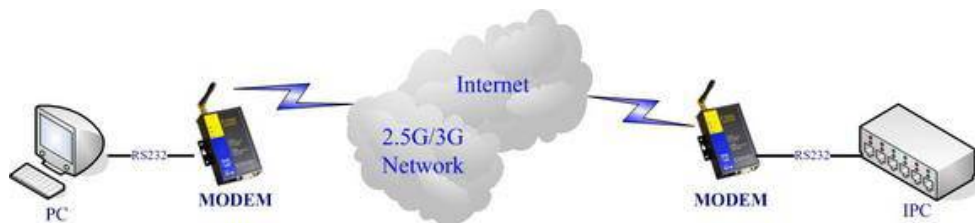
## Chapter 1 Brief Introduction of Product

### 1.1 General

F1X03 series MODEM is a kind of cellular terminal device that provides SMS, dial-up and CSD function by public cellular network.

It adopts high-powered industrial cellular module and supports RS232 port that can conveniently connect one device to a cellular network, allowing you to connect to your existing serial device.

It has been widely used on M2M fields, such as intelligent transportation, smart grid, industrial automation, telemetry, finance, POS, water supply, environment protection, post, weather, and so on.



### 1.2 Features and Benefits

#### Design for Industrial Application

- ◆ High-powered industrial cellular module
- ◆ Housing: iron, providing IP30 protection
- ◆ Power range: DC 5~35V

#### Stability and Reliability

- ◆ RS232 port: 15KV ESD protection
- ◆ SIM/UM port: 15KV ESD protection
- ◆ Power port: reverse-voltage and overvoltage protection
- ◆ Antenna port: lightning protection(optional)

#### Standard and Convenience

- ◆ Support standard RS232 port that can connect to a serial device directly
- ◆ Provide dial-up software that can make it always online
- ◆ Provide SMS tool software
- ◆ Support standard AT command

#### High-performance

- ◆ Support SMS
- ◆ Support dial-up (Except F1003)
- ◆ CSD function(F1003/F1103)

**Xiamen Four-Faith Communication Technology Co.,Ltd.**

Page 6 of 33

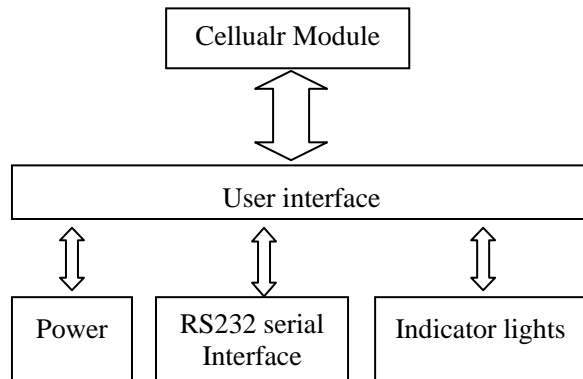
Add: J1-J3,3<sup>rd</sup>Floor,No.44,GuanRiRoad,SoftWare Park,XiaMen .361008.China

http: //www.fourfaith.com Tel: +86 592-6300326 6300325 6300324 Fax: +86 592-5912735

- ◆ Support APN/VPDN (Except F1003)

## 1.3 Working Principle

The principle chart of the MODEM is as following:



## 1.4 Specifications

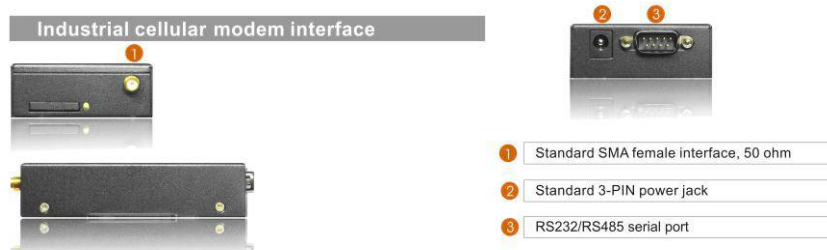
### Cellular Specification

Standard and Band	Bandwidth	TX power	RX sensitivity
<b>F1003 GSM MODEM</b>			
EGSM900/GSM1800MHz, GSM850/900/1800/1900MHz(optional) Compliant to GSM phase 2/2+	14.4Kbps CSD	GSM850/900: <33dBm  GSM1800/1900 : <30dBm	<-107dBm
<b>F1103 GPRS MODEM</b>			
EGSM900/GSM1800MHz, GSM850/900/1800/1900MHz(optional) Compliant to GSM phase 2/2+ GPRS class 10, class 12(optional)	85.6Kbps	GSM850/900: <33dBm  GSM1800/1900 : <30dBm	<-107dBm
<b>F1203 CDMA MODEM</b>			
CDMA2000 1xRTT 800MHz, 800/1900MHz(optional),450MHz(optional)	153.6Kbps	<30dBm	<-104dBm
<b>F1303 EDGE MODEM</b>			
GSM850/900/1800/1900MHz GPRS/EDGE Class 12	236.8Kbps	GSM850/900: <33dBm	<-106dBm

		GSM1800/1900 :	
		<30dBm	
F1403 WCDMA MODEM			
UMTS/WCDMA/HSDPA/HSUPA 850/1900/2100MHz, 850/900/1900/2100MHz(optional) GSM850/900/1800/1900MHz GPRS/EDGE CLASS 12	HSUPA:5.76Mbps(Upl oad speed)/ HSDPA:7.2Mbps(Down load speed) UMTS:384Kbps (DL/UL)	<24dBm	<-109dBm
F1503 TD-SCDMA MODEM			
TD-SCDMA/HSDPA/HSUPA 1880-1920/2010-2025MHz GSM850/900/1800/1900MHz GPRS/EDGE CLASS 12	Download speed:2.8Mbps, upload speed:2.2Mbps	<24dBm	<-108dBm
F1603 EVDO MODEM			
CDMA2000 1X EVDO Rev A 800MHz,800/1900MHz(optional), 450MHz (optional) CDMA2000 1X RTT, IS-95 A/B	Download speed:3.1Mbps, upload speed:1.8Mbps	<23dBm	<-104dBm

### Interface Type

Item	Content
Serial	1 RS232 port, 15KV ESD protection Data bits: 5, 6, 7, 8 Stop bits: 1, 1.5, 2 Parity: none, even, odd, space, mark Baud rate: 110~230400 bps
Indicator	"Power", "ACT", "Online"
Antenna	Standard SMA female interface, 50 ohm, lightning protection(optional)
SIM/UMIM	Standard 3V/1.8V user card interface, 15KV ESD protection
Power	Standard 3-PIN power jack, reverse-voltage and overvoltage protection



### Power Input

Item	Content
------	---------

**Xiamen Four-Faith Communication Technology Co.,Ltd.**

Page 8 of 33

Add: J1-J3,3<sup>rd</sup>Floor,No.44,GuanRiRoad,SoftWare Park,XiaMen .361008.China

http: //www.fourfaith.com Tel: +86 592-6300326 6300325 6300324 Fax: +86 592-5912735



Standard Power	DC 12V/0.5A
Power Range	DC 5~35V
Consumption	<200mA (12V)

#### Physical Characteristics

Item	Content
Housing	Iron, providing IP30 protection
Dimensions	91x58.5x22 mm
Weight	195g

#### Environmental Limits

Item	Content
Operating Temperature	-25~+65 ℃ ( -13~+149°F )
Extended Operating Temperature	-30~+75 ℃ ( -22~+167°F )
Storage Temperature	-40~+85 ℃ ( -40~+185°F )
Operating Humidity	95% ( Non-condensing)

## Chapter 2 Installation Introduction

### 2.1 General

The MODEM must be installed correctly to make it work properly.

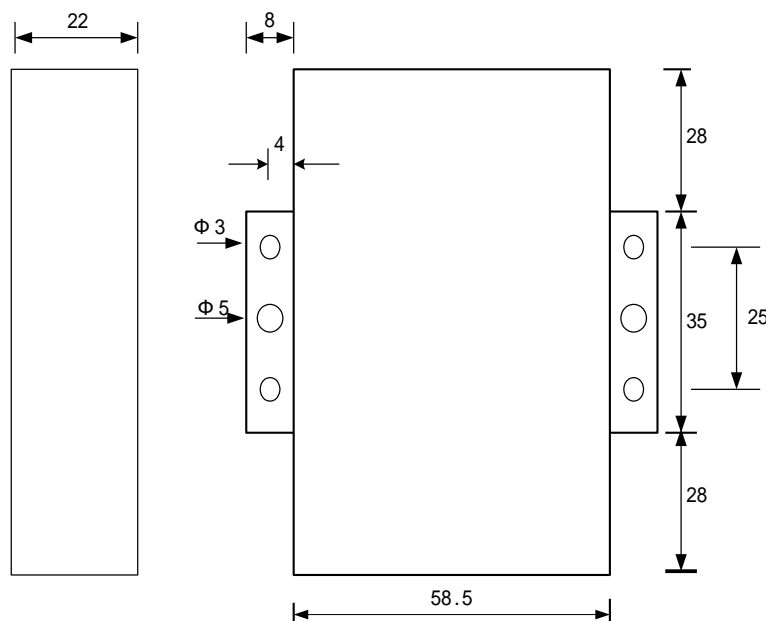
Warning: Forbid to install the MODEM when powered!

### 2.2 Encasement List

Name	Quantity	Remark
MODEM host	1	
Antenna	1	
Power adapter	1	
RS232 data cable	1	
Manual CD	1	
Certification card	1	
Maintenance card	1	

### 2.3 Installation and Cable Connection

**Dimension:** (unit: mm)



**Xiamen Four-Faith Communication Technology Co.,Ltd.**

Page 10 of 33

Add: J1-J3,3<sup>rd</sup>Floor,No.44,GuanRiRoad,SoftWare Park,XiaMen .361008.China

http: //www.fourfaith.com Tel: +86 592-6300326 6300325 6300324 Fax: +86 592-5912735

### Installation of SIM/UM card:

Firstly power off the MODEM, and press the out button of the SIM/UM card outlet with a needle object. Then the SIM/UM card sheath will flick out at once. Put SIM/UM card into the card sheath (Pay attention to put the side which has metal point outside), and insert card sheath back to the SIM/UM card outlet.

**Warning:** Forbid to install SIM/UM card when powered!

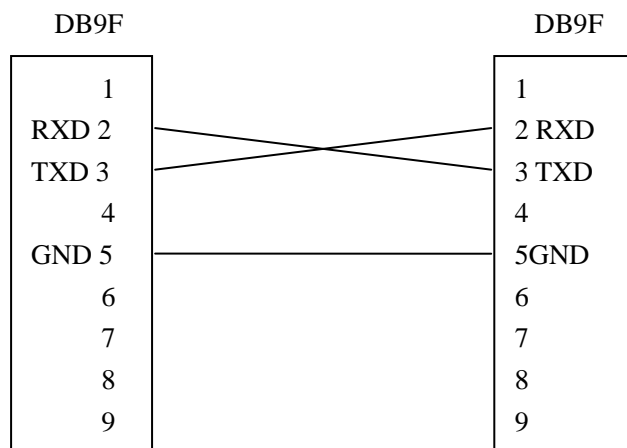
### Installation of antenna:

Screw the SMA male pin of the antenna to the female SMA outlet of the MODEM tightly. Warning: The antenna must be screwed tightly, or the signal quality of antenna will be influenced!

### Installation of cable:

Insert DB9F end of the RS232 data cable into the DB9M interface of MODEM, and connect the other end with user's device.

The signal connection of the RS232 data cable is as follows:



RS232 data cable

## 2.4 Power

The power range of the MODEM is 5~35V.

Warning: When we use other power, we should make sure that the power can supply power above 4W.

We recommend user to use the standard DC 12V/0.5A power adaptor.

## 2.5 Indicator Lights Introduction

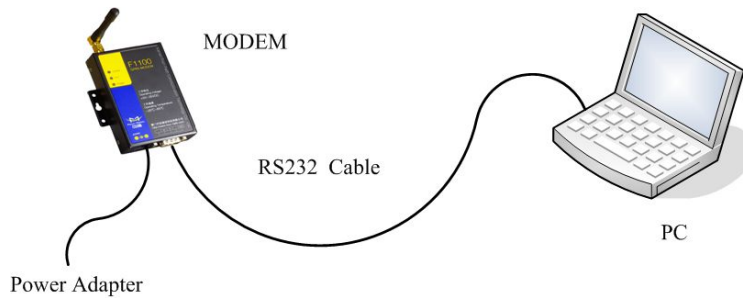
The MODEM provides three indicator lights: "Power", "ACT", "Online".

Indicator Light	State	Introduction
Power	ON	MODEM is powered on
	OFF	MODEM is powered off
ACT	BLINK	Data is communicating
	OFF	No data
Online	ON/ BLINK	MODEM has logged on network
	OFF	MODEM hasn't logged on network

## Chapter 3 Dial-Up Settings

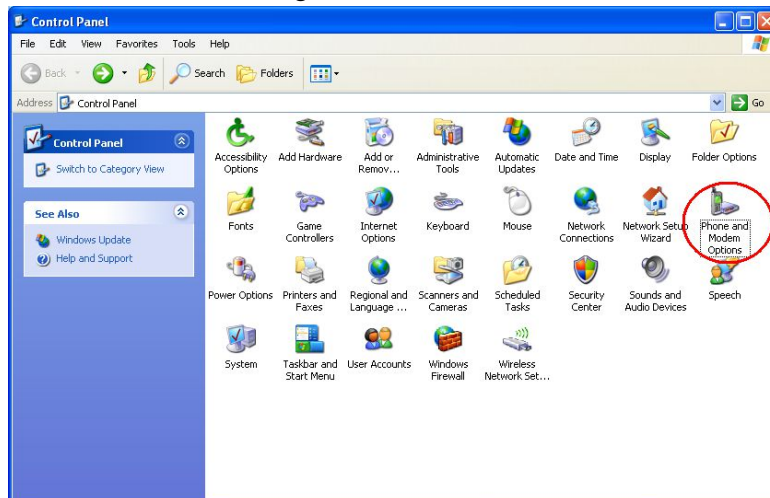
### 3.1 MODEM Connection

Connect Modem and PC with the shipped RS-232 cable as following:

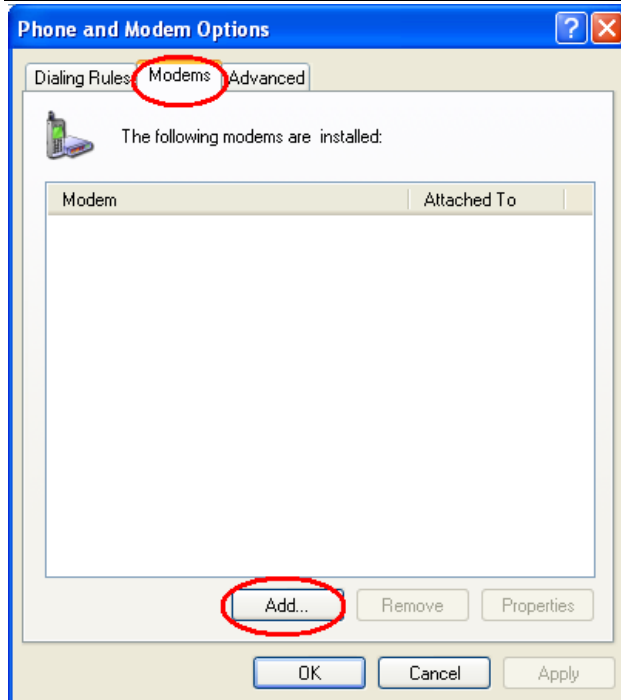


### 3.2 Dial-Up Settings

1. Press “start” → “Settings” → “Control Panel”, Double click “Phone and Modem Options”



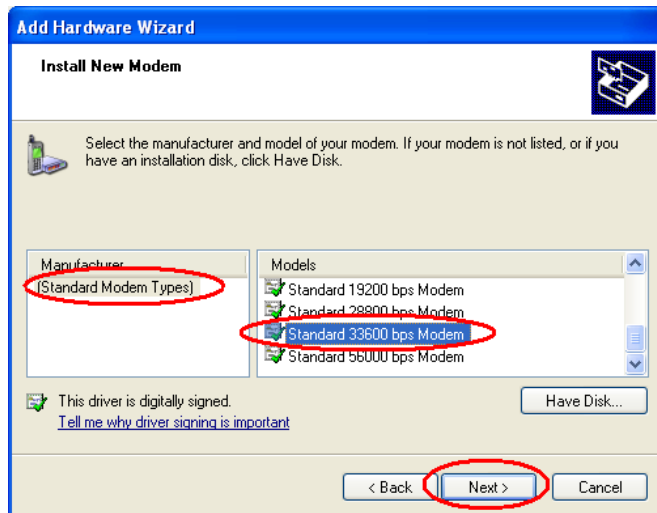
2. Choose “Modems”, Press “Add” button



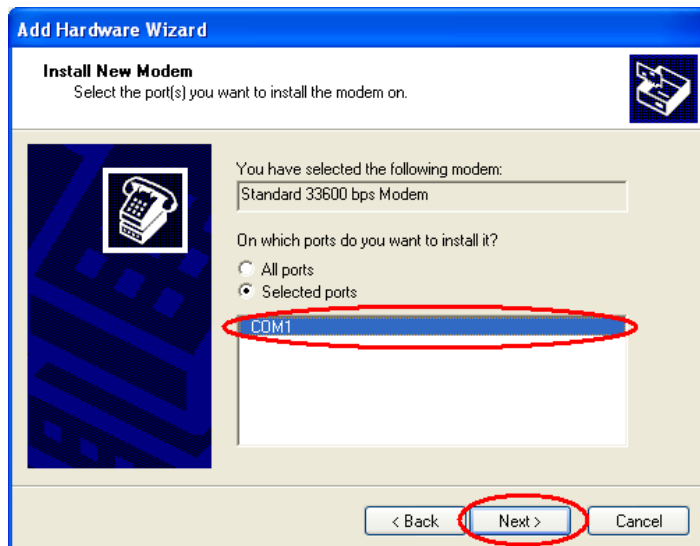
3. Choose “Don’t detect my modem;I will select it from a list”, and click “Next”



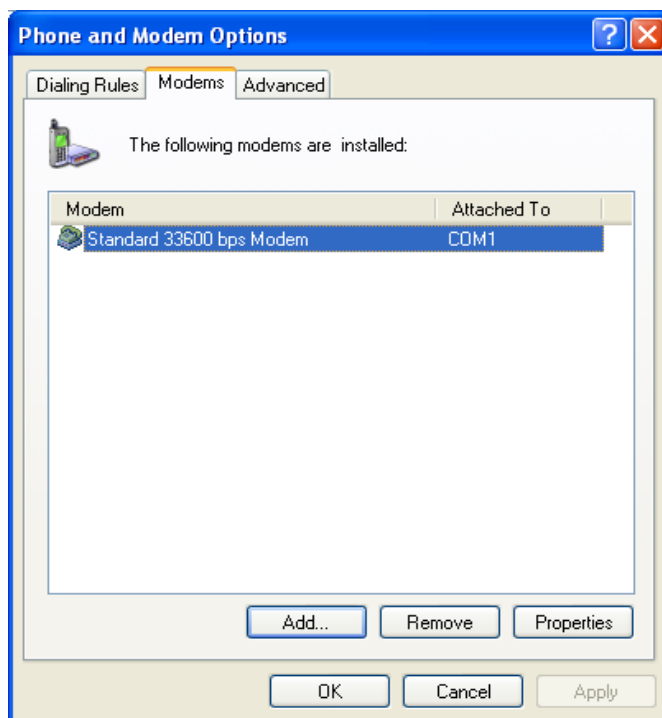
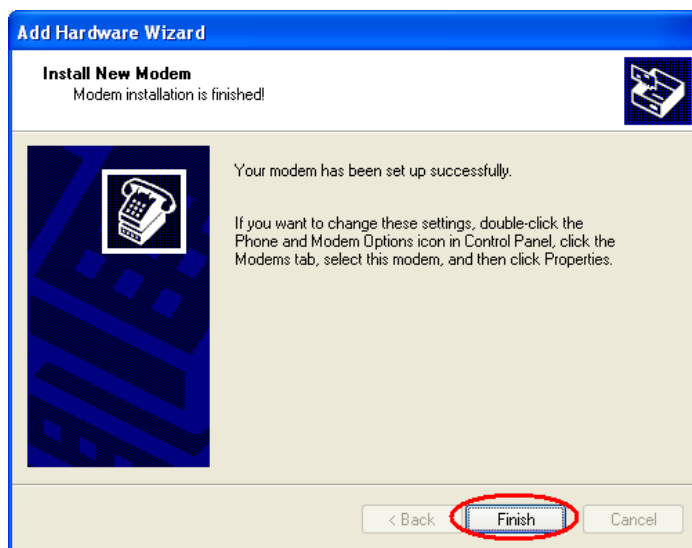
4. Manufacture choose ”Standard Modem Types”, Models choose “Standard 33600 bps Modem”, click “Next” button



5. “Selected ports” choose the actual COM port which connects to Modem, click “Next” button.

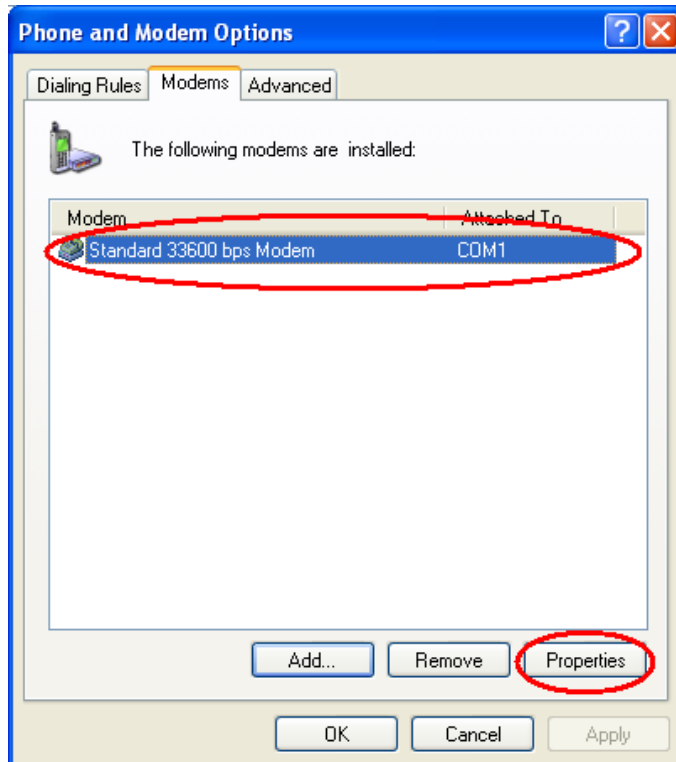


6. click “Finish” button, return back to “Modems” page

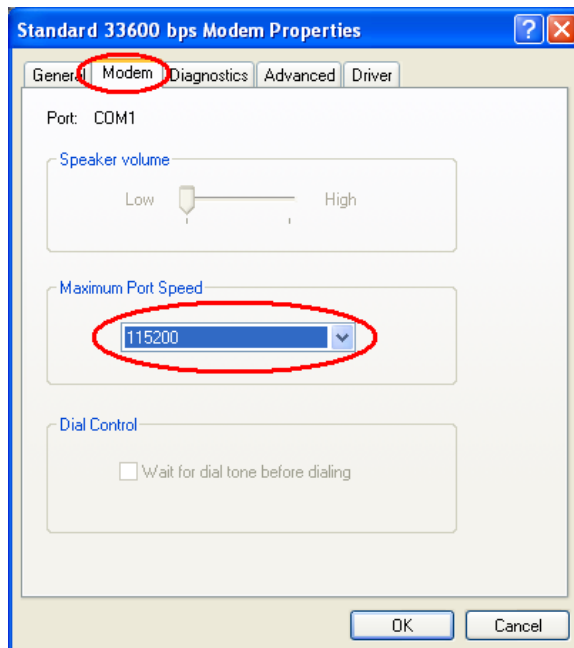


7. Choose the modem you have just installed, click “properties” button to configure the modem driver





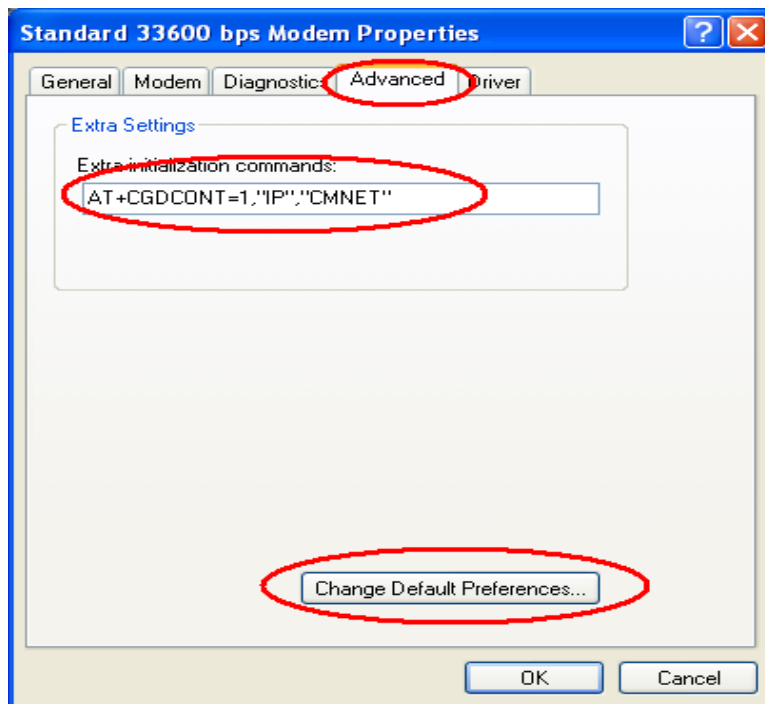
8. Choose “Modem” page, set Maximum Port Speed as 115200.



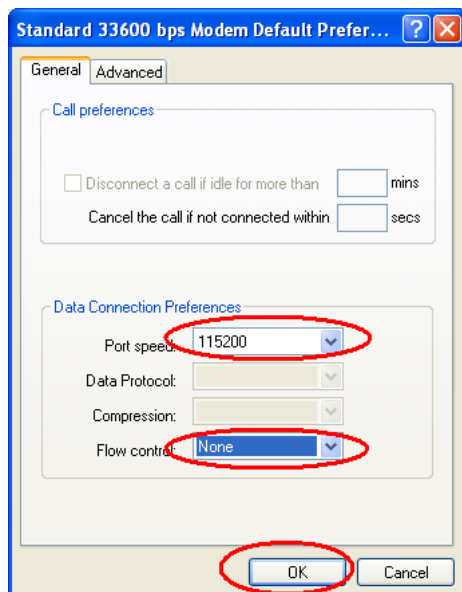
9. Choose “Advanced” page, input Extra Initialization commands: AT+CGDCONT=1,”IP”,”CMNET” , CMNET is the Access Point Name(APN) of China, please replace it with your own APN name, click “Change Default Preferences” button

note:

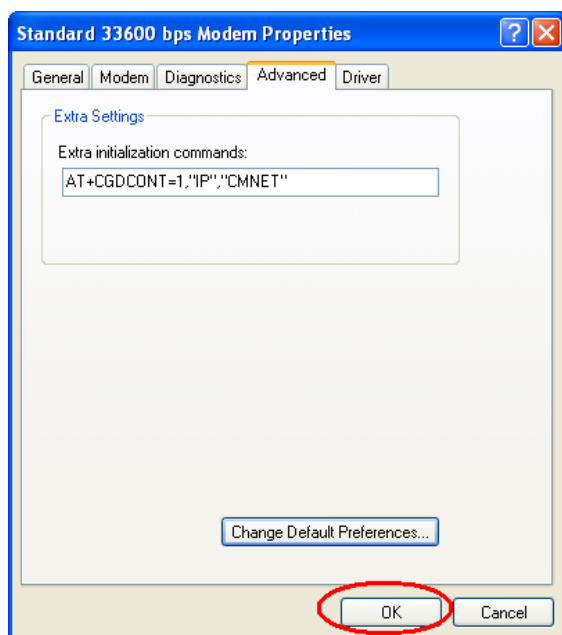
product model	Extraitntiahzation commands
F1103	AT+CGDCONT=1,"IP","CMNET"
F1203	null
F1303	AT+CGDCONT=1,"IP","CMNET"
F1403	AT+CGDCONT=1,"IP","3GNET"
F1503	AT+CGDCONT=1,"IP","CMNET"
F1603	null

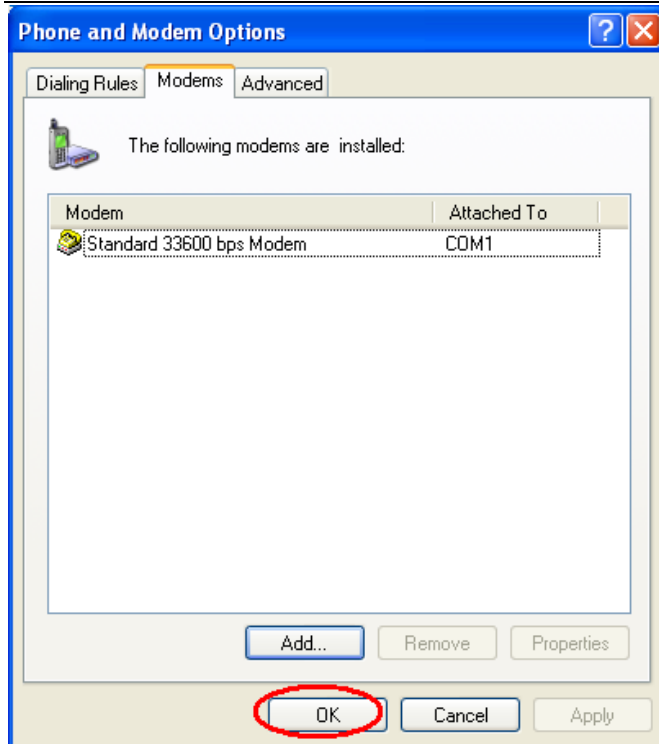


10. "Port Speed" choose 115200, "Flow control" choose None, click "OK" button.

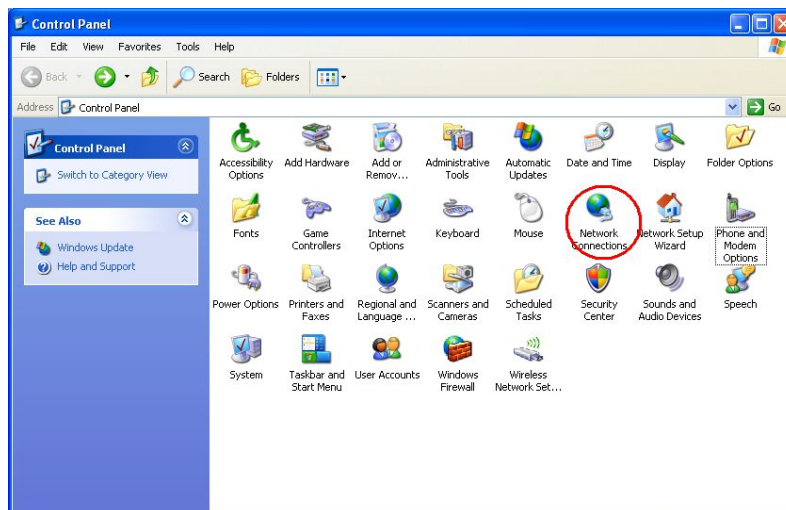


11. On the “Advanced” page, click “OK” button return to “Phone and Modems” page, click “OK” button to finish the Modem driver installation

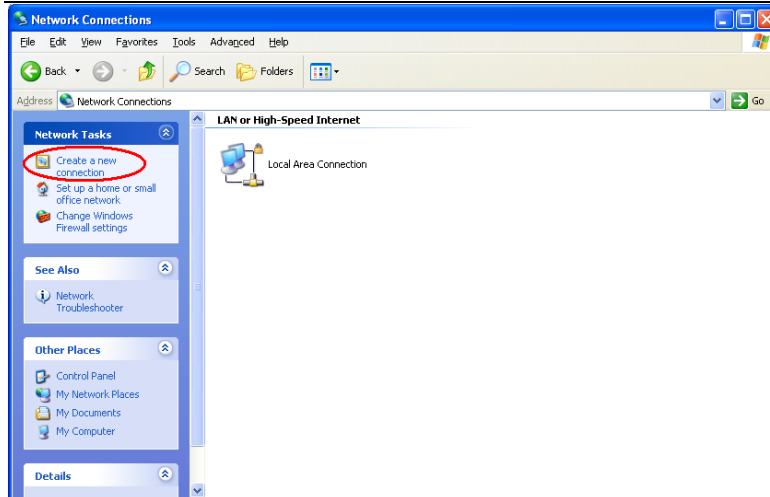




12. Finish installing Modem driver, It's necessary to install the Dial-Up connection. Open "Control Panel", double click "Network connections"



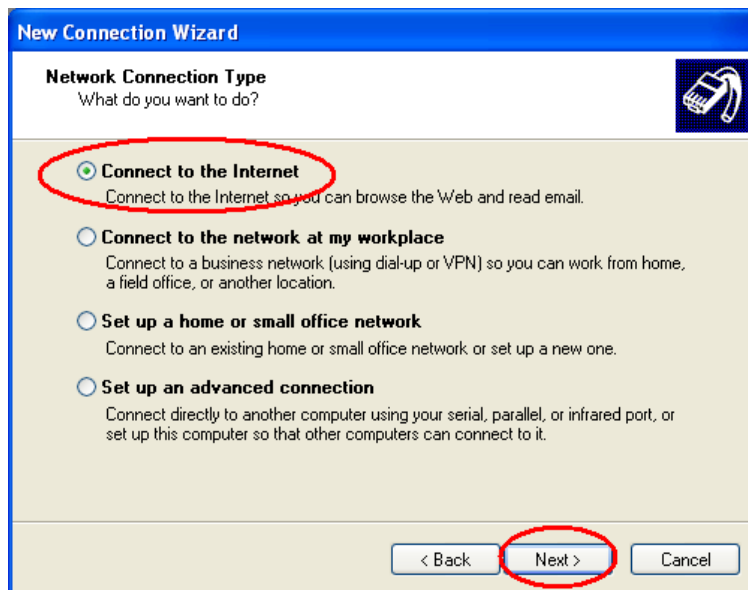
13. Click "Create a new connection" to start creating a new Dial-Up connection.



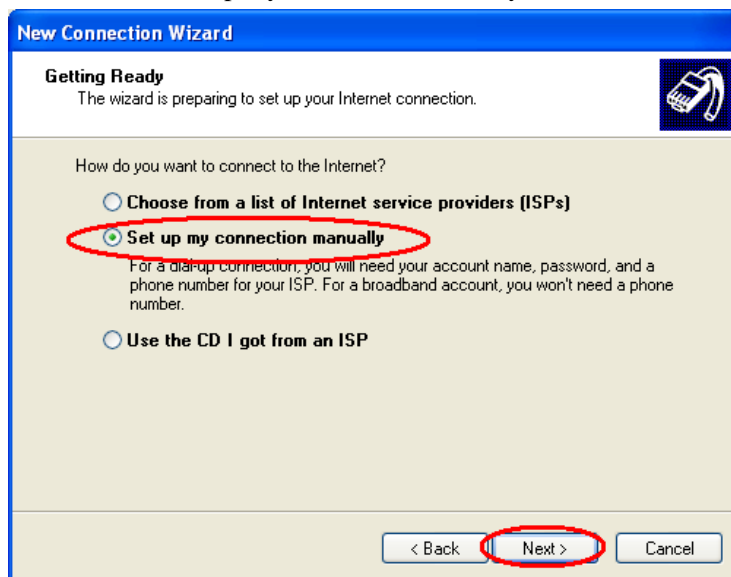
14. Click “Next” button



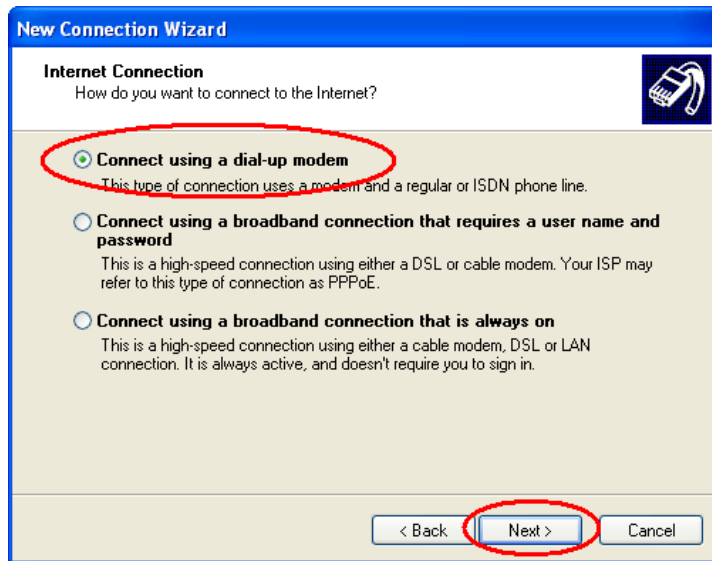
15. Choose “Connect to the Internet”, click “Next” button



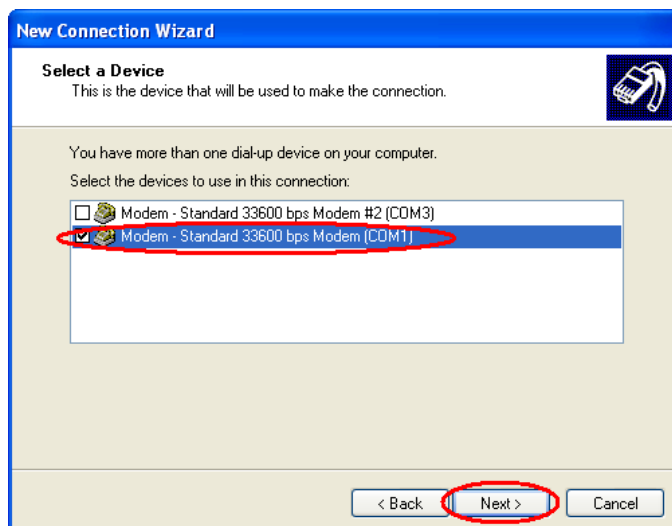
16. Choose “Set up my connection manually”, click “Next”



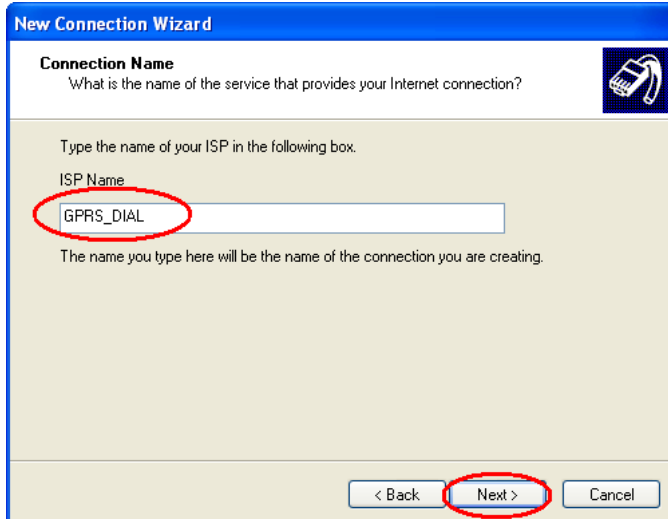
17. Choose “Connect using a dial-up modem”, click “Next”



18. Choose the Modem driver installed just now, click “Next” button



19. Input the ISP Name , click “Next” button



**New Connection Wizard**

**Connection Name**  
What is the name of the service that provides your Internet connection?

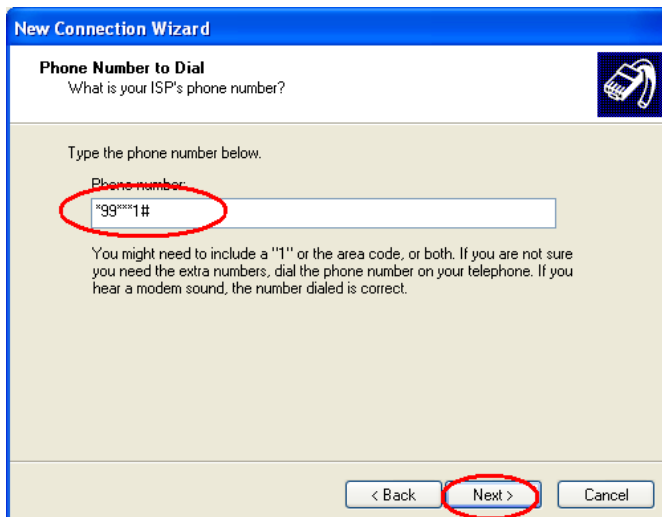
Type the name of your ISP in the following box.

ISP Name  
GPRS\_DIAL

The name you type here will be the name of the connection you are creating.

< Back Next > Cancel

20. Input the access number of your ISP. In China, It is \*99\*\*\*1#. Click “Next” button.



**New Connection Wizard**

**Phone Number to Dial**  
What is your ISP's phone number?

Type the phone number below.

Phone number  
\*99\*\*\*1#

You might need to include a "1" or the area code, or both. If you are not sure you need the extra numbers, dial the phone number on your telephone. If you hear a modem sound, the number dialed is correct.

< Back Next > Cancel

Note:

Product model	Type the phone number below
F1103	*99***1#
F1203	#777
F1303	*99***1#
F1403	*99#
F1503	*98*1#
F1603	#777

21. Input the username and password. In china they are both null. Click “Next”.





**New Connection Wizard**

**Internet Account Information**  
You will need an account name and password to sign in to your Internet account.

Type an ISP account name and password, then write down this information and store it in a safe place. (If you have forgotten an existing account name or password, contact your ISP.)

User name:

Password:

Confirm password:

☒ Use this account name and password when anyone connects to the Internet from this computer

☒ Make this the default Internet connection

< Back **Next >** Cancel

22. Choose “Add a shortcut to this connection to my desktop”, click “Finish” button.



**New Connection Wizard**

**Completing the New Connection Wizard**

You have successfully completed the steps needed to create the following connection:

**GPRS\_DIAL**

- Make this the default connection
- Share with all users of this computer
- Use the same user name & password for everyone

The connection will be saved in the Network Connections folder.

☒ Add a shortcut to this connection to my desktop

To create the connection and close this wizard, click Finish.

< Back **Finish** Cancel

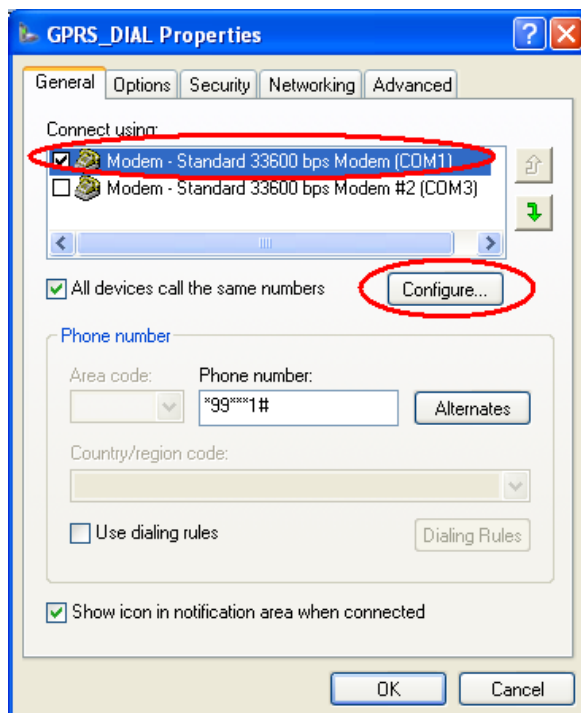
23. Double click the Dial-Up shortcut on your desktop to run Dial-Up program.



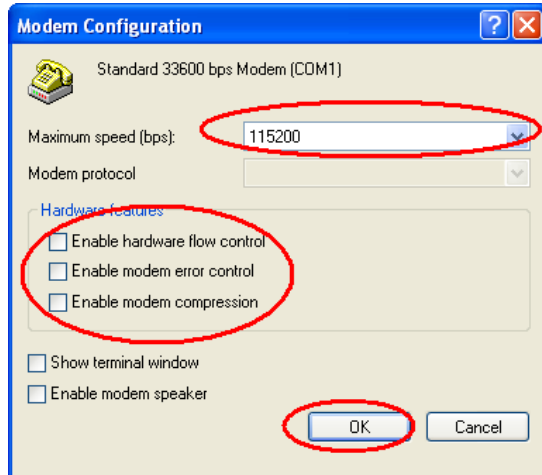
24. Click the “Properties” button of the Dial-Up program



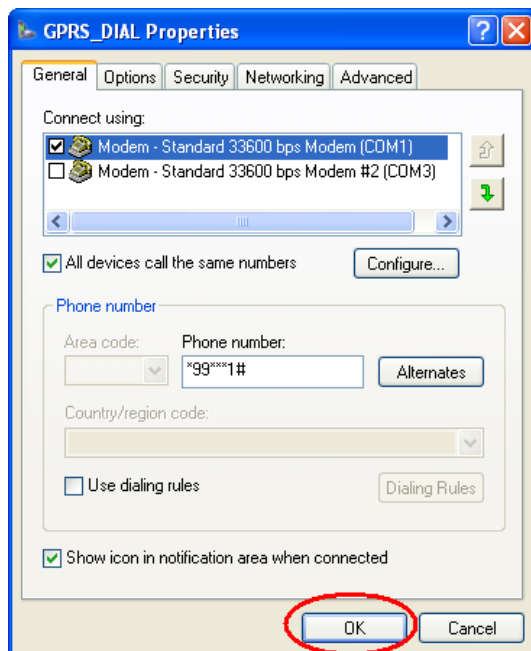
25. Choose the Modem driver installed before, Click “Configure” button



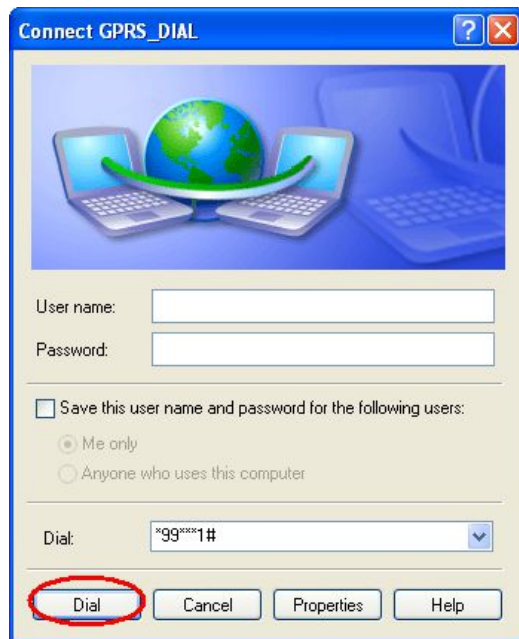
26. Set “Maximum Speed [bps]” as 115200, set Hardware features as following, click “OK” button




27. Click “OK” button to finish Dial-Up program configuration



28. Click “Dial” button to start dial

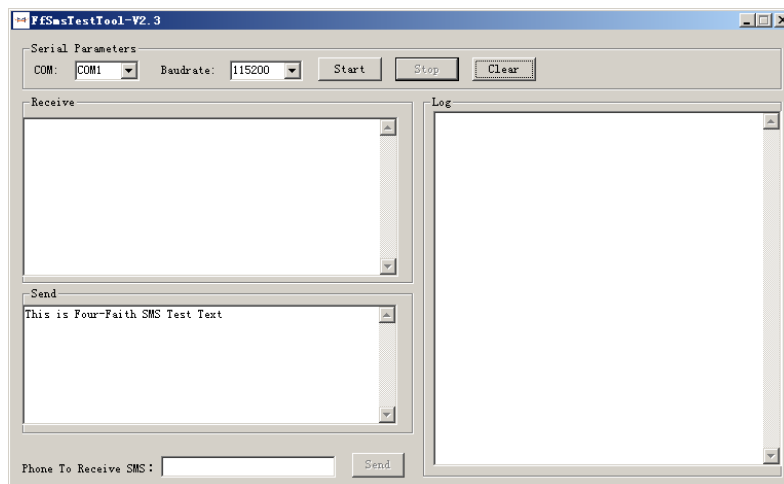


29. When dial success, There is a connection icon  on the right of your taskbar.

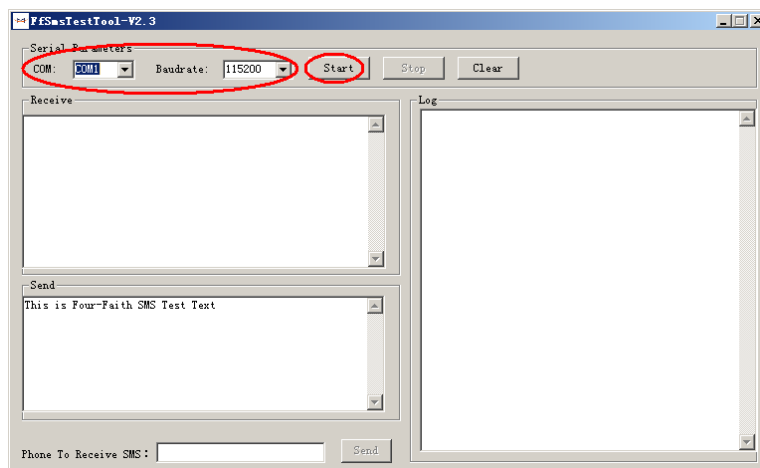
## Chapter 4 SMS Test

Modem can also be used to send and receive SMS (Short Message Service) except setting up dial-up connection. To simplify customer program, we supply a DLL(Dynamic Link Library) and sample program source code, all the SMS operations can be processed through simple API functions. The following describes how to test the SMS function.

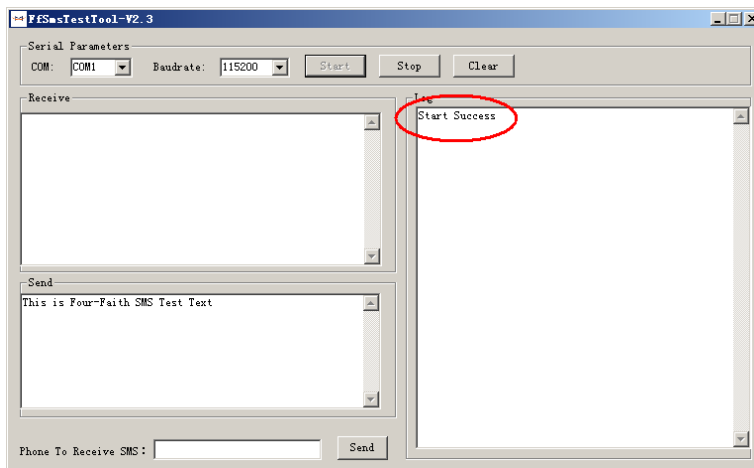
1. Connect PC and Modem with the shipped RS-232 cable and power on Modem, The connection diagram please refer chapter 3.1
2. Run FfSmsTestTool-En.exe



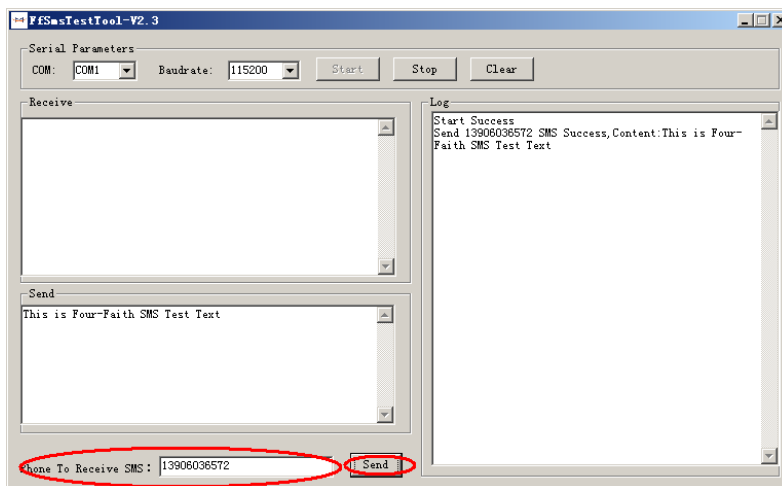
3. Choose the COM port which connect to MODEM, baud rate is 15200, click “Start” button



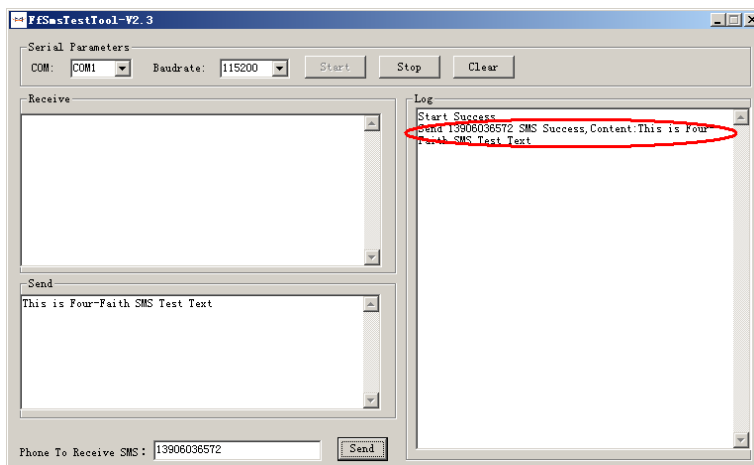
4. The tool will initiate Modem after clicking the “Start” button, If initiate success, the log column will show “Start Success”, It’s now ready for sending and receiving SMS.



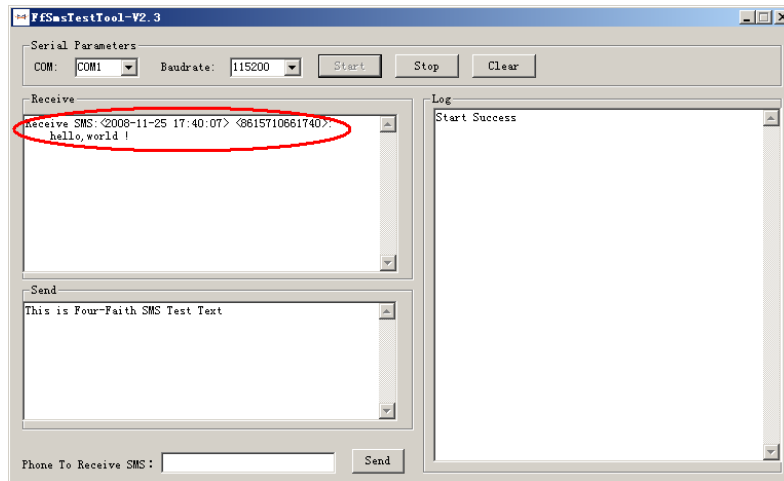
5. Input the phone to receive this test SMS, click “Send” button



6. The result state will display in the Log column



7. When received SMS, It will display in the receive column



#### 8. Complete SMS test.

## Chapter 5 Appendix

The following steps describe how to setup Windows XP Hyper Terminal and send AT command to modem with it.

1. Press “Start”→”Programs”→”Accessories”→”Communications”→”Hyper Terminal”



2. Input connection name, choose “OK”
3. Choose the correct COM port which connects to modem, choose “OK”



4. Configure the serial port parameters as following, choose “OK”



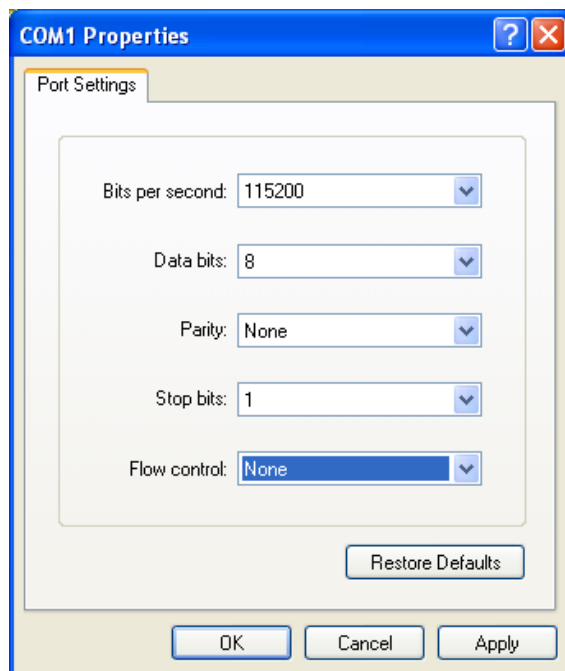
Bits per second: 115200

Data bits: 8

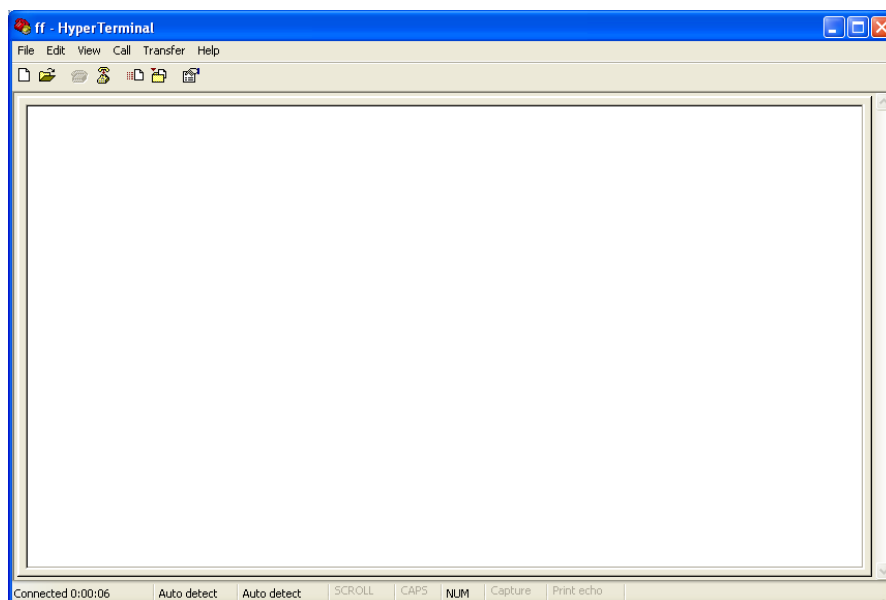
Parity: None

Stop bits: 1

Flow control: None



5. Complete Hyper Terminal operation, It runs as following



6. Type “AT” in the blank of Hyper Terminal and press “Enter”, the modem will return “ok”.

**Xiamen Four-Faith Communication Technology Co.,Ltd.**

Page 33 of 33

Add: J1-J3,3<sup>rd</sup>Floor,No.44,GuanRiRoad,SoftWare Park,XiaMen .361008.China

http: //www.fourfaith.com Tel: +86 592-6300326 6300325 6300324 Fax: +86 592-5912735