



ETU02-MUX

E1 Multiplexer

11

E1 Access Multiplexer

The ETU02-MUX is a 1U 19(23)" 4 slot rack mountable multiplexing solution for Fractional E1 network services. Up to four DTE devices may be linked to this model at data rates of 64Kbps to 2048Kbps. There is also provision for one optional E1 sub-link which will perform drop & insert with user-defined timeslot connections from a PABX or other E1 equipment to E1 network services. The Fractional E1 2 or 4 port multiplexer supports local control and diagnostics via an LCD display and LED status indicators located on the front panel or via a serial console port. These features enable users to easily configure the unit, execute the in-service diagnostics and monitor the network status. The ETU02-MUX provides for optional SNMP Network Management System, which allow the user to remotely control and manage the system via SNMP protocol. This model fully meets all of the E1 specifications including ITU-T G.703, G.704, G.706, G.732, and G.823.

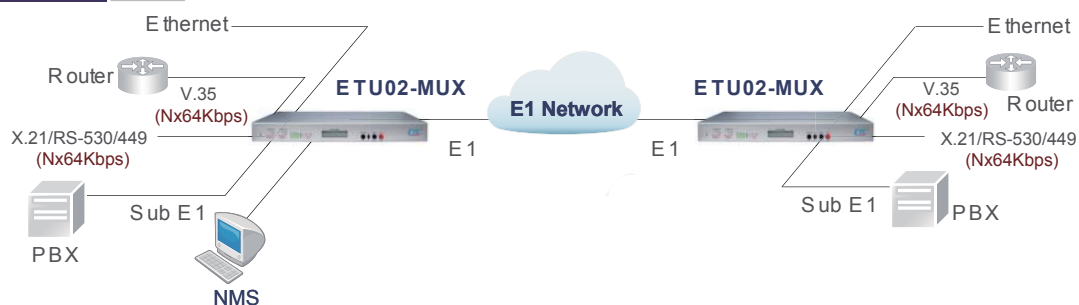
Feature

- Provides 4 slots, removable interfaces: V35, X21, RS530, RS449, RS232, G.703 Co-directional, NRZ, Ethernet Bridge and Router.
- Optional drop and insert E1 port (Sub E1)
- Built-in BERT with V.54 diagnostic capabilities for performing local and remote loopback
- Setup and Control via front Panel with LCD display or RS-232 terminal
- Multiple clock source selection (Internal or External: E1 recovery, DTE or DCE)
- Optional SNMP management

Specifications

E1 and Sub-E1	Framing: Unframed / Framed CCS(PCM31) Framed: CAS(PCM30) Bit rate: 2.048Mbps±0 ppm Line code: AMI / HDB3 Line impedance: 75 ohm (BNC) / 120 ohm (DB-15, RJ-45)
Transmitter level	Relative receive level: 0 to -43dB Pulse: Nominal 2.37V ±10% for 75ohm Amplitude: Nominal 3.00V ±10% for 120ohm Zero amplitude: ±0.1V Transmit frequency: Internal timing±100 ppm Tracking: Recovery timing±100 ppm External timing: ±100 ppm Jitter performance: According to ITU-T G.823 Return loss: 12dB for 51 ~ 102KHz 18dB for 102 ~ 2048KHz, 14dB for 2048 ~ 3072KHz
User Data Channel	Interface connector: 15-pin D-type F, BNC Data rate: Nx56Kbps or Nx64Kbps Control signals: CTS constantly on DSR constantly on, except during test loops DCD constantly on or follows RTS, except during signal loss Loopback: Line, Payload, local, DTE loopback
User Data Channel	BERT Test Patterns: 511, 2047, 2e15-1, 2e20-1, QRSS, 2e23-1, All 1, All 0, Alt, 0011, 3 in 24, 1 in 16, 1 in 8, 1 in 4 test pattern.
Clock modes	Clock mode 0 (DCE1) Receive and transmit clock (recovered) to the sync DTE Clock mode 0 (DCE2) Receive and transmit clock (internal oscillator) to the sync DTE Clock mode 0 (DCE3) Receive and transmit clock from the sync DCE (from ETC and ERC pin) Clock mode 0 (DCE4) Receive and transmit clock from the sync DCE (all from ETC pin)
Key Pad	4 operation keys
LCD	16 x 2 character backlit LCD
Indications	Signal loss, Sync loss, Alarm (AIS, MRAI, RAI), TD, RD, Error, Test
Standard	ITU-T G.703/G.704/G.706, G.732 & G.823
Power Input	AC: 90 ~250V, DC24: -18 ~-36VDC, DC48: -36 ~-72VDC
Power Consumption	10W
Dimensions / Weight	235 x 438 x 45mm (D x W x H) / 2.9kg
Temperature	0~50°C (Operating), -10~70°C (Storage)
Humidity	10~90% non-condensing
Certification	CE, FCC
MTBF	57,000 hrs

Application



Ordering Information

Model Name	Type	Description
ETU02-Mux4-AC	Power	E1 Mux with 4 data ports, AC power
ETU02-Mux4-DC	Power	E1 Mux with 4 data ports, DC power
ETU02-Mux4-AD	Power	E1 Mux with 4 data ports, AC+DC power
ETU02-Mux2-AC	Power	E1 Mux with 2 data ports, AC power

ETU02-Mux2-DC	Power	E1 Mux with 2 data ports, DC power
ETU02-Mux2-AD	Power	E1 Mux with 2 data ports, AC+DC power

Pory Number Power Type
ETU02 - MUX ☐ - ☐
 Example: ETU02 - MUX4 - AC