


<b>Item</b>	<b>Fiber Optic Patch Cord</b>
<b>Model NO.</b>	<b>FC-LC-Patch-Cord</b>
<b>Description</b>	FC-LC Fiber Optical Patch Cord
	

#### Overview

AOA offers a variety of FC-LC fiber optic patch cord in Simplex, Duplex and Mini Zip, single mode(SM) and multi mode(MM); The LC-FC patch cords assemblies that could be built to your specification. Please contact AOA for any custom specification patch cords.

#### Features

- Superior qualified standard PC/UPC/APC polishing
- Compliant with Telcordia GR-326-Core, TIA/EIA and IEC
- 100% optic test (Insertion Loss & Return Loss)
- 0.9mm, 2.0mm and 3.0mm cable optional
- Simplex / Duplex Optional
- Comply to IEC Standard
- Flexible boot are available
- PVC/LSZH

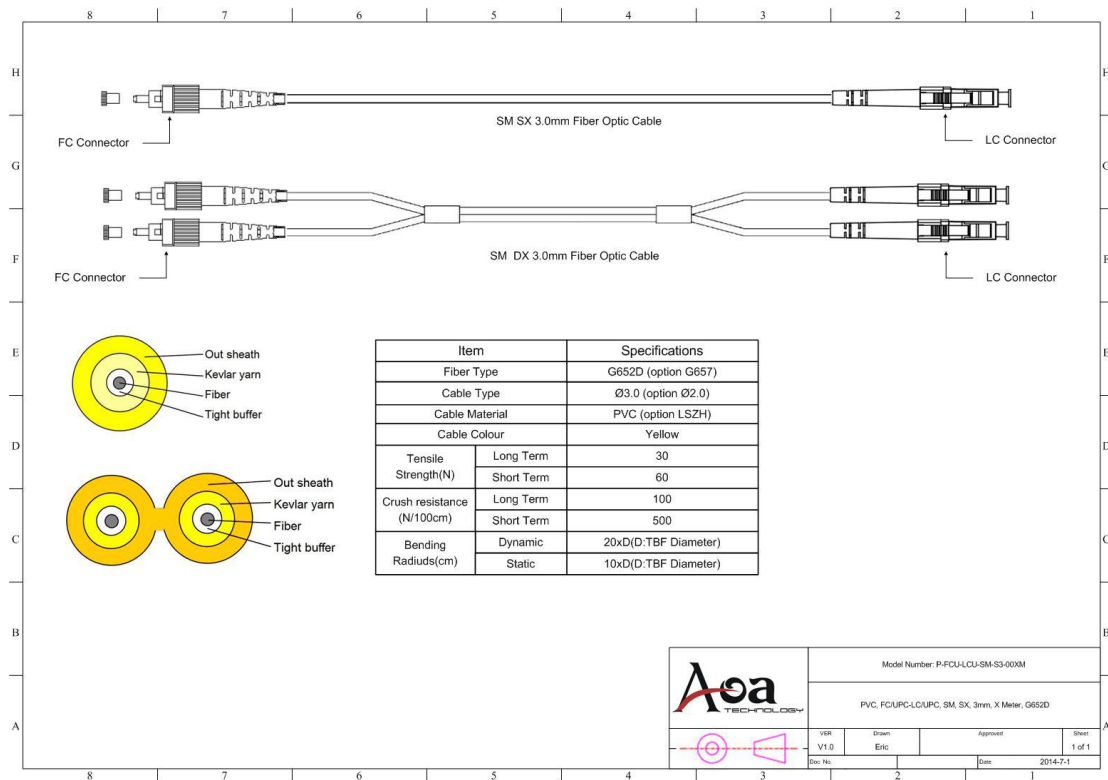
#### Applications

- High Speed and volume Fiber Optic Transmission Systems
- CATV Networks
- LAN
- Fiber Optic Instrumentation

Specification

Patch Cord/Pigtail Spec			
Type	Single mode(UPC)	Single mode(APC)	Multi-mode (PC)
Insertion loss	≤0.2 dB	≤0.2 dB	≤0.2 dB
Return Loss	≥50 dB	≥60 dB	≥35 dB
Repeatability	≤0.1dB		
Durability	≥1000matings		
Operating Temperature	-40 °C to +80 °C		
Tensile Strength(N)	≥90N (φ3), ≥70N (φ2)		

Cable Structure



### Order Information

Port	Polishing	Port	Polishing	Fiber Type	Cable Type	Fiber Length	Jacket
<input type="checkbox"/> <input type="checkbox"/>	<input type="checkbox"/>	<input type="checkbox"/> <input type="checkbox"/>	<input type="checkbox"/>	<input type="checkbox"/> <input type="checkbox"/>	<input type="checkbox"/> <input type="checkbox"/>	<input type="checkbox"/>	<input type="checkbox"/>
FC=FC SC=SC ST=ST LC=LC MU=MU RJ=MT/RJ E2=E2000 D4=D4 FI=FDDI EN=ESCON	U=UPC A=APC	FC=FC SC=SC ST=ST LC=LC MU=MU RJ=MT/RJ E2=E2000 D4=D4 FI=FDDI EN=ESCON	U=UPC A=APC	SM=SM 9/125um M5=MM 50/125um M6=MM 62.5/125um O3=MM OM3 O4=MM OM4	S9=Simplex 0.9mm S2=Simplex 2.0mm S3=Simplex 3.0mm D2=Duplex 2.0mm D3=Duplex 3.0mm DR=Round Duplex (For MT/RJ only)	001M=1 meter 002M=2 meter ..... 001F=1 foot 002F=2 foot	P=PVC L=LSZH

Example: FCU-LCU-SM-S2-003M-P FC/UPC-LC/UPC SM 2.0mm 3meter PVC