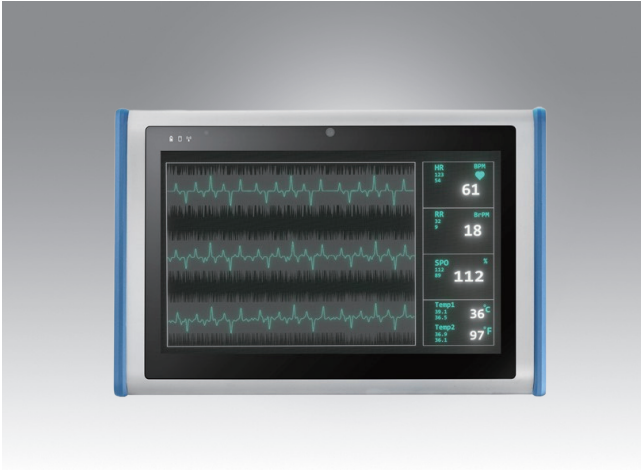


# MIT-W102

## 10" Medical-Grade Tablet with Intel® Pentium® Processor and PCAP Touchscreen



### Features

- Intel® Pentium® N4200 processor
- Supports Windows 10 IOT and Linux operating systems
- EN/UL 60601 certification - ensuring patient and medical staff safety
- 10.1" WUXGA display with multi-point capacitive touch control
- Ruggedness - IP65-rated & 5-ft drop tolerance
- Wireless communication, including Wi-Fi, Bluetooth, and NFC(opt.)
- Optional accessories include desk docking station, VESA docking station, rubber bumper/hand strap, and 3-in-1 multifunctional stand
- Equipped with DeviceOn iService Suite software for remote device management

### Introduction

Advantech's MIT-W102, 10" tablet PC, is medical-grade certified, Windows-based and designed for healthcare environment. With IEC/EN/UL 60601-1 certification, this medical tablet can be used in the most critical environments like operating rooms, intensive care units and emergency rooms.

Infection control and reliability are important elements for hospital and other healthcare facilities. To fulfill the requirements, MIT-W102 is IP-65 rated for water/dust protection and easy for cleaning with the antibacterial housing.

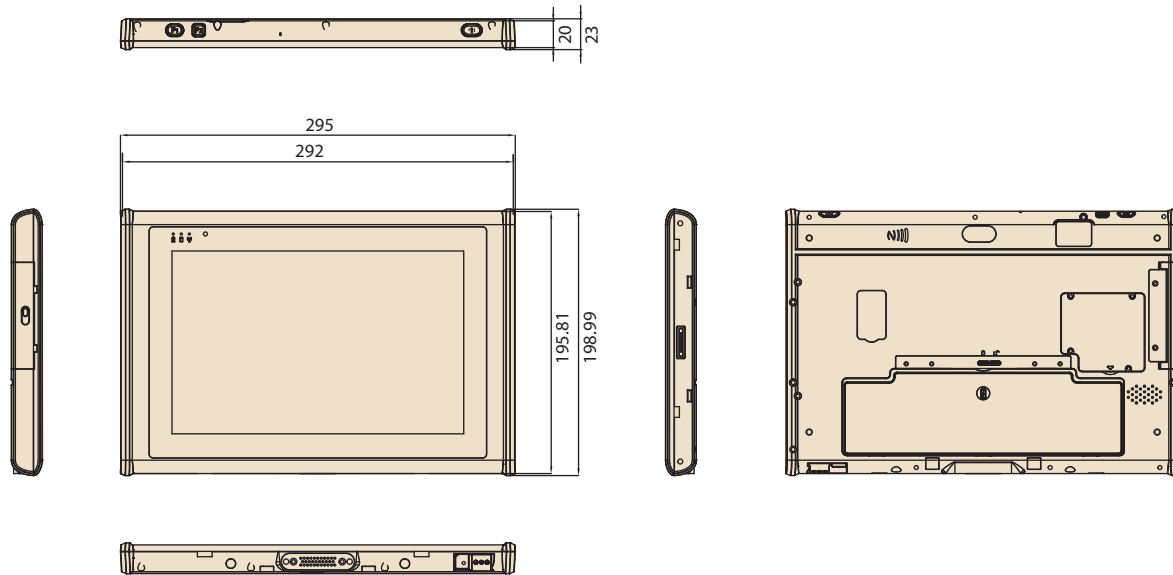
In addition, MIT-W102 is equipped with Advantech's DeviceOn iService Suite software, which is a next-generation unified device management solution based on the WISE-DeviceOn platform. With support for batch operations and multi-device control, DeviceOn iService Suite enables easy device configuration and deployment for convenient remote device management.

### Specifications

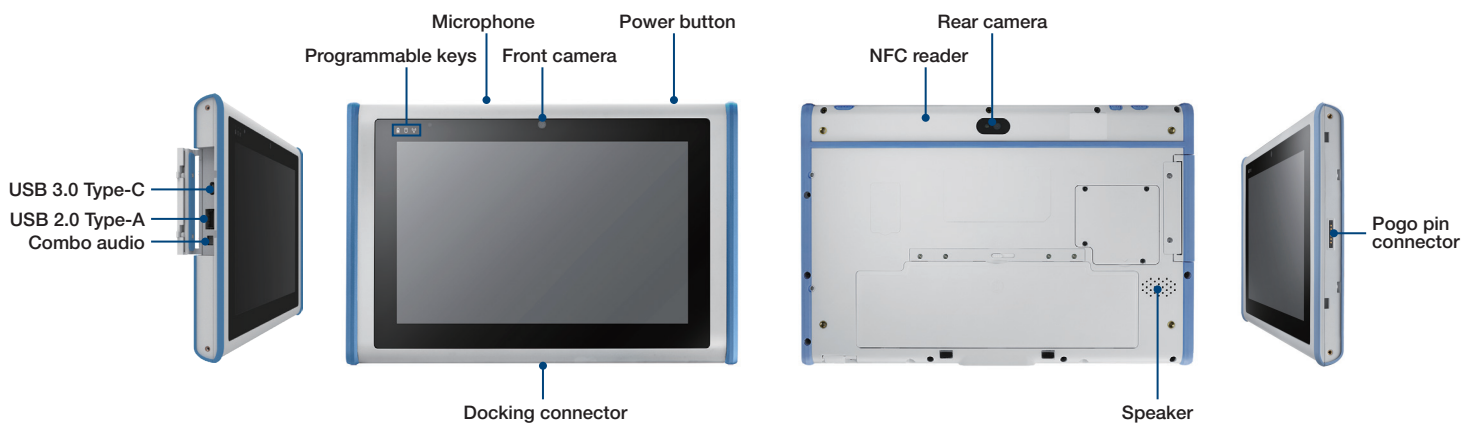
System	Processor	Intel® Pentium® N4200 processor
	Max. Speed	Quad-core 1.1GHz (burst frequency: 2.5GHz)
	Memory	LPDDR4 1600MHz 4GB on board memory (8GB upon request)
	Operating System	Windows 10 IoT Enterprise LTSC, Linux (available upon request)
Storage	SSD	1 x m.2 SSD (default 64GB, supports up to 128GB)
Display	Display Type	10.1" TFT LCD panel
	Max. Resolution	1920 x 1200
	Touch Type	Multi-point projected capacitive touch
	Glass Type	Enhanced glass with anti-glare coating
Communication	Wi-Fi	Wireless IEEE 802.11a/b/g/n/ac
	Bluetooth	Bluetooth V5.0, V4.2, V4.1, V4.0 LE, V3.0+HS, Bluetooth V2.1+EDR system
	NFC	ISO 15693, ISO 14443A/B, FeliCa, MIFARE, Tag-it, My-D, M24LRXX, I code 2 (optional)
Audio		1 x Internal speaker, 1 x internal mono microphone
Connectivity	I/O	1 x USB 3.0 Type-C supporting data/charging/DP (output 5V/1A), 1 x USB 3.0 Type-A, 1 x DC jack, 1 x Combo audio, 1 x expansion port, 1 x docking port
Camera	Front	2-megapixel fixed-focus camera (optional)
	Rear	5-megapixel auto-focus camera with LED flash (optional)
Security		TPM 2.0
Control Buttons		2 x Programmable function keys, 1 x power button
System Indicators		Power, battery status, HDD, wireless connectivity, Bluetooth
Ingress Protection		IP65 rated
Power Supply	Input	100 ~ 240V <sub>AC</sub> , 50 ~ 60Hz, 1.4A ~ 0.8A
	Output	19V <sub>DC</sub> , 3.16A (max.), 60 W
	Battery Capacity	Main Battery: 31.7 Whrs (11.1V 2860mAh)
Environmental	Temperature	Operating: 0 ~ 35 °C/32 ~ 95 °F Storage: -20 ~ 60 °C/-4 ~ 140 °F
	Humidity	Operating: 10% ~ 95% @ 35 °C/95 °F non-condensing Storage: 10% ~ 95% @ 60 °C/140 °F non-condensing
	Vibration	Operating: (5 ~ 500GHz) 1G Non-operating: (5 ~ 500GHz) 4, 4 mm ~ 2G
	Shock Resistance	Operating: 20 G, 11 ms; shipping: 1 ~ 200 Hz, 1.15G (refer to ISTA 2A)
	Drop Tolerance	Up to 152.4 cm/5 ft onto plywood over concrete
Characteristics	Dimensions (W x H x D)	292 x 196 x 20 mm/11.5 x 7.7 x 0.79 in
	Weight	1.1 kg/2.4 lb (base unit)
	Color	White
Certifications		FCC Class B, CE, IEC/EN/UL 60601-1, 62368-1

## Dimensions

Unit: mm



## System Layout



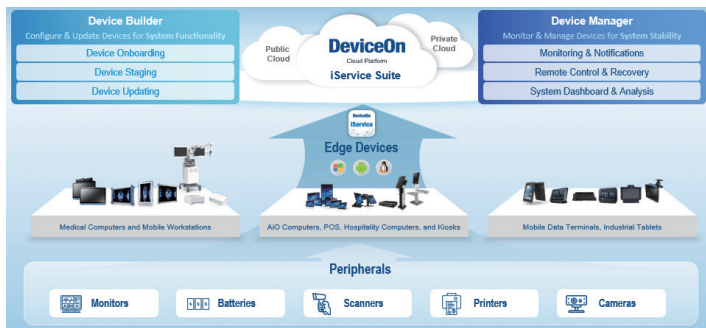
## Ordering Information

Part Number	Description	Memory	NFC	F/R Cameras
MIT-W102-Q04D0C00E	Intel N4200 processor, 4GB DDR memory, 64GB SSD, white, Windows 10	4GB	N/A	N/A
MIT-W102-Q08DNC01E	Intel N4200 processor, 8GB DDR memory, 128GB SSD, NFC reader, camera, white, Windows 10	8GB	Yes	Yes

## Peripheral Ordering Information

Part Number	Description
1702002600	Power Cord UL 3P 10A 125V 183cm (USA)
1700000237	Power Cord PSE 3P 12A 125V 183cm (Japan)
1700000596-11	Power Cord CCC 3P 10A 250V 183cm (China)
1702031836	Power Cord SAA 3P 10A 250V 183cm (NZ/AU)
1700018704	Power Cord BSI 3P 10A 250V 180cm (UK)
1702002605	Power Cord EU 3P 10A 250V 183cm 90°(EU)

# DeviceOn - iService Suite



## Introduction

Advantech's DeviceOn - iService Suite is an advanced remote device management solution that enables you to centrally manage your devices, minimizing the need for expensive on-site visits and saving your valuable time and resources. Device Builder ensures that your devices are always up-to-date with the latest configuration and software updates, reducing the risk of data breaches and other security threats. Meanwhile, Device Manager helps to ensure that your devices are functioning correctly, reducing downtime and enhancing productivity.

## Key Functions

### Device Builder



#### Device Onboarding

- Support Windows, Linux, Android devices
- Quick enrollment process



#### Device Staging

- OS configuration
- Software/peripheral watchlist
- Device label, Location management



#### Device Updating

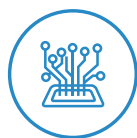
- Cloud software storage
- Installation package for multiple software updating
- Android OS upgrading

### Device Manager



#### Monitoring & Notifications

- Connection/hardware status
- Software/peripheral status
- Device abnormal notifications



#### Remote Control & Recovery

- Reboot & power controls
- Audio & backlight settings
- Screenshots & remote desktop / SSH



#### System Dashboard

- Devices working status
- Software version sync status
- Results of scheduled tasks

## Services & Specifications

Functions List	OS Platform			Service Type	
	Windows	Android	Linux (Ubuntu)	Builder	Manager
	10, 11	8, 10, 12	20.04, 22.04, 24.04		
Device Onboarding - Enrollment, Locations and Labels	✓	✓	✓	✓	✓
Profile - OS Settings (Kiosk Mode, ON/Off Schedule, others are OS dependent)	✓ (LTSC)	✓		✓	✓
Profile - Alarm Rules, Software & Peripheral Monitoring, Task Schedule	✓	✓	✓		✓
OTA Update - Installation Packs, Software Storage, Android OS	✓	✓	✓	✓	✓
Monitoring - Device Hardware (CPU/RAM/Storage/Battery)	✓	✓	✓		✓
Monitoring - Advanced Battery Management	✓ (Dependent on battery model)				✓
Monitoring - Device Software (Running Status/CPU & Memory Usage)	✓	✓	✓		✓
Monitoring - Peripherals & Display (Connect Status)	✓	✓	✓ (USB Only)		✓
Control - Audio volume & Backlight	✓	✓	✓		✓
Control - Screenshot, Reboot, Shutdown	✓	✓	✓		✓
Control - Schedule Tasks	✓	✓	✓		✓
Control - Remote Desktop	✓	✓	20.04 support		✓
Control - Remote SSH			✓		✓

## Ordering Information

Ordering P/N	Cloud Type	Description
36CSDOISSASP01	SaaS subscription	DeviceOn - iService Suite device annual fee (365 days)
36CSDOISPSRP01	On-premise server	DeviceOn - iService Suite device license (perpetual)
36CSDOISPSRP02	On-premise server	Server software license and installation fee for new deployment
36CSDOISPSRP03	On-premise server	Annual maintenance fee after warranty

# VESA Docking Station



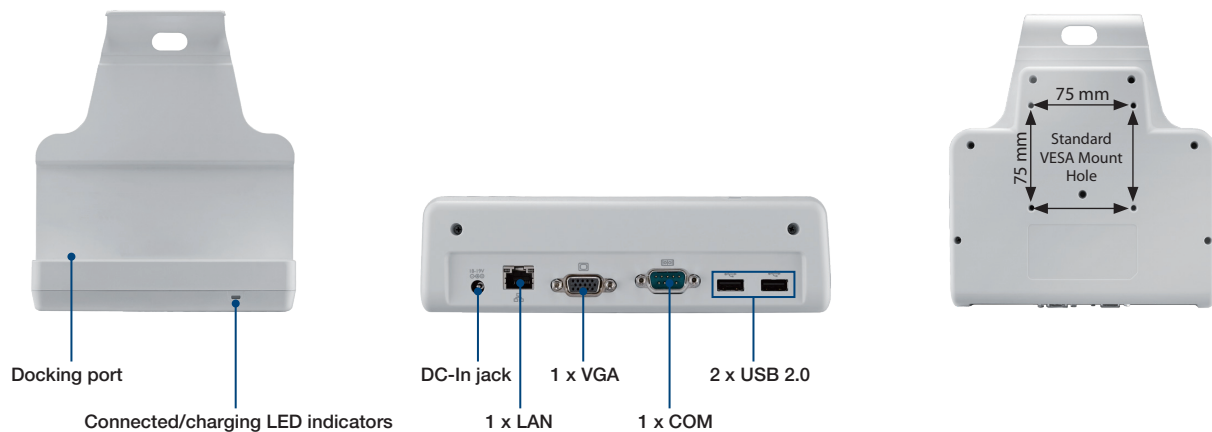
## Features

- VESA (75 x 75 mm) compliant docking station
- Reliable docking connector with LED indicator for connectivity
- Equipped with a variety of I/O for easy integration

## Specifications

Model Name	MIT-W102 VESA Docking Station
Color	White
Dimensions (H x W x D)	224.7 x 200 x 56.4 mm/8.84 x 7.87 x 5.64 in
Weight	630 g/1.39 lb
I/O	1 x LAN, 1 x VGA, 1 x COM, 2 x USB 2.0
Power Input	19V, 3.15A max.

## I/O



## Ordering Information

Part Number	Description	Color
MIT-W102-ACCVD001E	MIT-W102 VESA docking station	White

# Desktop Docking Station



## Features

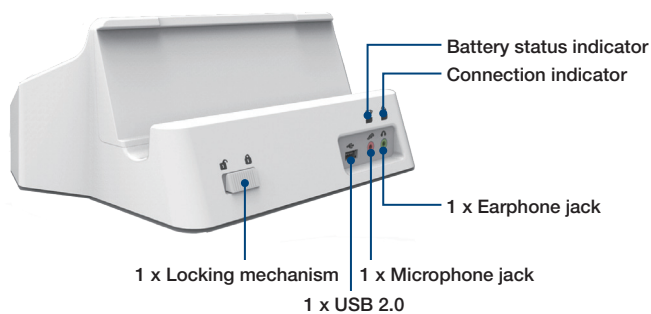
- Reliable docking connector with LED indicator for connectivity
- Equipped with a variety of I/O for easy integration
- Additional battery charging station provided

## Specifications

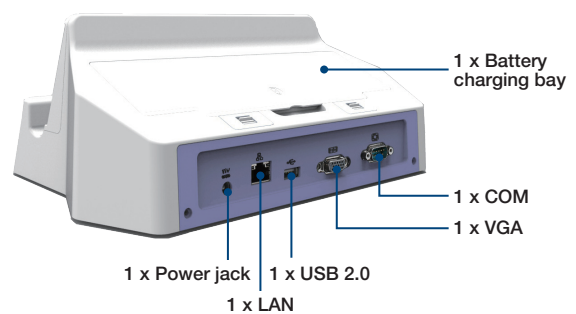
Model Name	MIT-W102 Desk Docking Station
Color	White
Dimensions (H x W x D)	260.8 x 185 x 103.8 mm/10.26 x 7.28 x 4.08 in
Weight	1 kg/2.2 lb
I/O	1 x LAN, 1 x VGA, 1 x COM, 2 x USB 2.0
Power Input	19V, 3.15A max.

## I/O

### Front



### Rear



## Ordering Information

Part Number	Description	Color
MIT-W102-ACCDS001E	MIT-W102 desk docking station	White

# MIT-W102 Accessories

3-in-1 Multifunctional stand



Rubber bumper



Part Number	MIT-W101-ACCVB001E	MIT-W101-ACCBH000E
Color	Silver + black	Black
Dimensions (H x W x D)	276.6 x 175.5 x 9 mm/10.88 x 6.9 x 0.35 in	220 x 47 x 30 mm/8.66 x 1.85 x 1.18 in
Weight	210 g/0.46 lb	172 g/0.38 lb
Description	VESA mount (75 x 75 mm)	Rubber bumper with hand strap