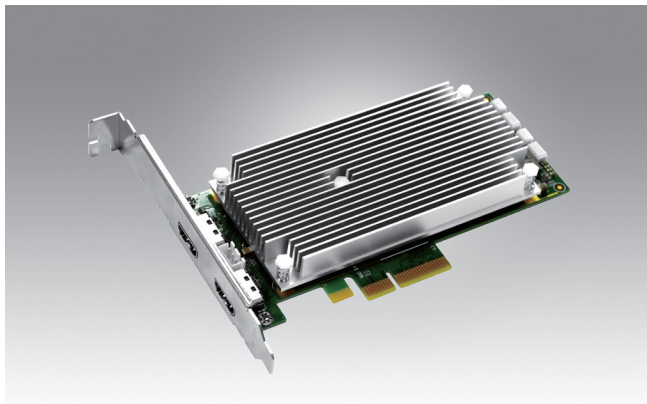


DVP-7024UHEL

2-ch 4K60 HDMI 2.0 PCIe Video Capture Card



Features

- 2-channels HDMI video input with H.264 software compression
- 4096 x 2160@60/50/30/25/24fps (HDMI) for display and recording
- PCIe x4 (Gen2) host interface
- Windows/Linux OS supported



Introduction

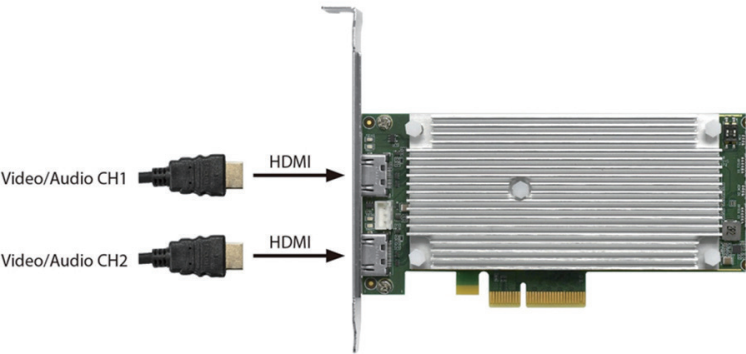
DVP-7024UHEL is a PCIe software compression capture card which is specially designed for 4K resolution video capture applications. It supports up to 2 channels of 4K resolution, 4096 x 2160@60/50/30/25/24fps video from 2 x HDMI input. DVP-7024UHEL support live video recording from 4K resolution signal sources into H.264 files.

DVP-7024UHEL is an ideal solution for various video capture applications.

Specifications

Video	Video Standard	HDMI 2.0
	Video Input	2 x HDMI
	Compression	SW H.264
	Max. resolution / FPS	4096 x 2160@60/50/30/25/24fps input 4096 x 2160@60/50/30/25/24fps output
	Raw Data Format	YV12, NV12, YUY2, RGB24, RGB32, V410, Y410, P010, P210
Audio	Audio input	2xHDMI Embedded Audio
Multiple cards support		Yes
System Requirements	CPU (Display)	Intel® Core™ i3-4330
	CPU (Recording)	Intel® Core™ i3-4330
	Memory	4 GB
	VGA	1024 x 768, DirectX 9.0c
	Operating System	Windows 7 / Windows 8 / Windows 8.1 / Windows 10/ Window 11 Linux 4.8 or Higher (32-bit and 64-bit)
Physical Characteristics	Host Interface	PCIe
	Operating Temperature	-10~70 °C
	Storage Temperature	-40-85 °C
	Dimensions	139.71x68.9 (mm) PCIe Low Profile
	Safety	CE/FCC

Connection Diagram



Ordering Information

Part Number	Description
DVP-7024HEL	2-ch 4K60 HDMI 2.0 PCIe Video Capture Card

Packing List

Item	Amount
DVP-7024HEL card	1 (piece)