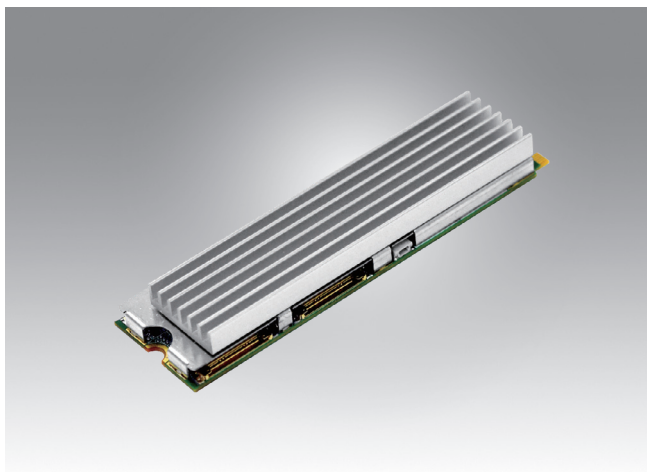


# DVP-7031MHE

## 4-ch FHD50/60 HDMI 2.0 M.2 Video Card



### Features

- 4-channels HDMI video input with H.264 software compression
- 1920 x 1080P @60/50 fps (HDMI 2.0) / 1920 x 1080P @60/50 fps for display and recording
- M.2 (PCIe x 4) host interface
- Windows/Linux OS supported

### Introduction

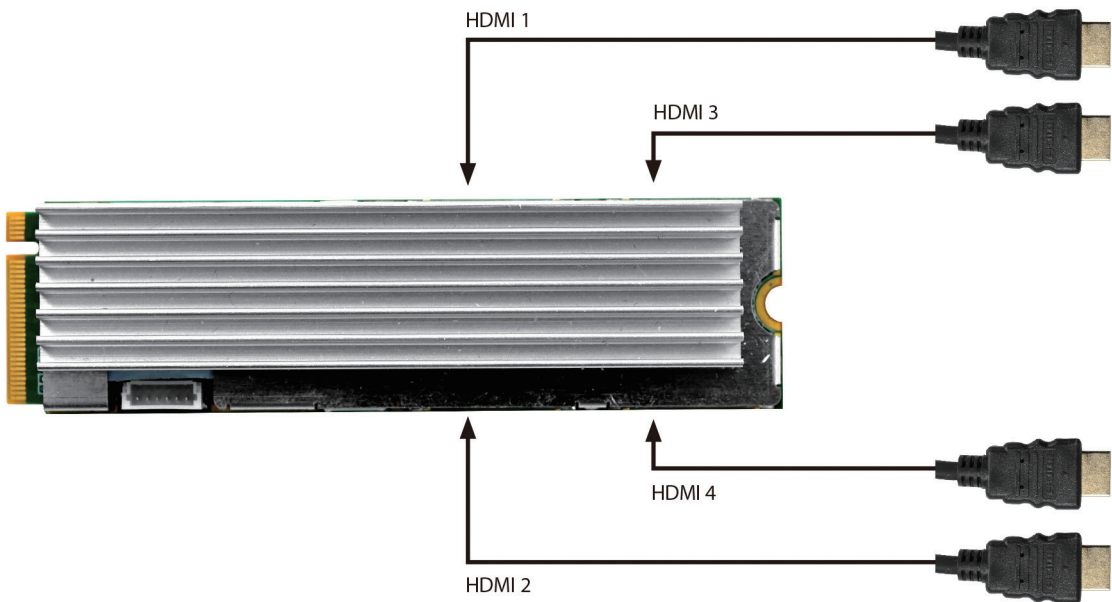
DVP-7031MHE is a M.2 software compression capture card which is specially designed for FHD resolution video capture applications. It supports up to 4 channels of FHD resolution, 1920 x 1080p @60/50fps video from 4xHDMI2.0 input. DVP-7031MHE support live video recording from FHD resolution signal sources into H.264 files.

DVP-7031MHE is an ideal solution for various video capture applications.

### Specifications

Video	Video Standard	HDMI 2.0
	Video Input	4 x HDMI 2.0
	Compression	SW H.264
	Max. resolution / FPS	1920 x 1080P @60/50fps HDMI input 1920 x 1080P @60/50fps HDMI output
	Raw Data Format	YV12, NV12, YUY2, RGB24, RGB32, P010
Audio	Audio input	4 x HDMI Embedded Audio
Multiple cards support		Yes
System Requirements	CPU (Display)	Intel® Core™ i3-4330
	CPU (Recording)	Intel® Core™ i3-4330
	Memory	4 GB
	VGA	1024 x 768, DirectX 9.0c
	Operating System	Windows 7 / Windows 8 / Windows 8.1 / Windows 10/ Window 11 Linux 4.8 or Higher (32-bit and 64-bit)
Physical Characteristics	Host Interface	PCIe
	Operating Temperature	-10~70°C
	Storage Temperature	-40~85°C
	Dimensions	22x80 (mm) M.2 Type M
	Safety	CE/FCC

Connection Diagram



Ordering information

Part Number	Description
DVP-7031MHE	4-ch FHD50/60 HDMI 2.0 M.2 Video Card

Packing list

Item	Amount
DVP-7031MHE card	1 (piece)