

# User Manual

Revision 1.003  
English

## OPC UA Client / Modbus TCP Slave - Converter

(Order Code: HD67B10-B2)

for Website information:

<http://www.adfweb.com/?Product=HD67B10>

for Price information:

<http://www.adfweb.com/?Price=HD67B10-B2>

### Benefits and Main Features:

- ✦ Triple electrical isolation
- ✦ Power Supply 18...35V DC and 8...24 V AC
- ✦ Temperature range: -40°C/+85°C (-40°F/+185°F)



For others OPC UA Client devices, see also the following links:

#### OPC UA Client from/to ...

<a href="http://www.adfweb.com?Product=HD67B08">www.adfweb.com?Product=HD67B08</a>	(Serial)
<a href="http://www.adfweb.com?Product=HD67B09">www.adfweb.com?Product=HD67B09</a>	(Modbus Slave)
<a href="http://www.adfweb.com?Product=HD67B11">www.adfweb.com?Product=HD67B11</a>	(Bacnet Slave)
<a href="http://www.adfweb.com?Product=HD67B12">www.adfweb.com?Product=HD67B12</a>	(CAN)
<a href="http://www.adfweb.com?Product=HD67B13">www.adfweb.com?Product=HD67B13</a>	(CANopen)
<a href="http://www.adfweb.com?Product=HD67B14">www.adfweb.com?Product=HD67B14</a>	(DeviceNet Slave)
<a href="http://www.adfweb.com?Product=HD67B15">www.adfweb.com?Product=HD67B15</a>	(DMX)
<a href="http://www.adfweb.com?Product=HD67B16">www.adfweb.com?Product=HD67B16</a>	(EtherNet/IP Slave)
<a href="http://www.adfweb.com?Product=HD67B17">www.adfweb.com?Product=HD67B17</a>	(J1939)
<a href="http://www.adfweb.com?Product=HD67B18">www.adfweb.com?Product=HD67B18</a>	(KNX)
<a href="http://www.adfweb.com?Product=HD67B19">www.adfweb.com?Product=HD67B19</a>	(MQTT)
<a href="http://www.adfweb.com?Product=HD67B20">www.adfweb.com?Product=HD67B20</a>	(NMEA0183)
<a href="http://www.adfweb.com?Product=HD67B21">www.adfweb.com?Product=HD67B21</a>	(NMEA2000)
<a href="http://www.adfweb.com?Product=HD67B22">www.adfweb.com?Product=HD67B22</a>	(PROFINET)
<a href="http://www.adfweb.com?Product=HD67B23">www.adfweb.com?Product=HD67B23</a>	(SNMP Agent)
<a href="http://www.adfweb.com?Product=HD67D37">www.adfweb.com?Product=HD67D37</a>	(LoRaWAN)
<a href="http://www.adfweb.com?Product=HD67E20">www.adfweb.com?Product=HD67E20</a>	(EtherCAT Slave)

Do you have an your customer protocol?

See the following links:

[www.adfweb.com?Product=HD67003](http://www.adfweb.com?Product=HD67003)

Do you need to choose a device? do you want help?

Ask it to the following link:

[www.adfweb.com?Cmd=helpme](http://www.adfweb.com?Cmd=helpme)



User Manual

## INDEX:

	Page
INDEX	2
UPDATED DOCUMENTATION	2
REVISION LIST	2
WARNING	2
TRADEMARKS	2
SECURITY ALERT	3
EXAMPLE OF CONNECTION	4
CONNECTION SCHEME	5
CHARACTERISTICS	6
CONFIGURATION	6
POWER SUPPLY	7
FUNCTION MODES	8
LEDS	9
ETHERNET	10
USE OF COMPOSITOR SW67B10	11
NEW PROJECT / OPEN PROJECT	12
SOFTWARE OPTIONS	13
SET COMMUNICATION	15
OPC UA ACCESS	17
UPDATE DEVICE	23
MODBUS MAP	25
MECHANICAL DIMENSIONS	26
ORDERING INFORMATIONS	27
ACCESSORIES	27
DISCLAIMER	28
OTHER REGULATIONS AND STANDARDS	28
WARRANTIES AND TECHNICAL SUPPORT	29
RETURN POLICY	29

## UPDATED DOCUMENTATION:

Dear customer, we thank you for your attention and we remind you that you need to check that the following document is:

- ✚ Updated
- ✚ Related to the product you own

To obtain the most recently updated document, note the “document code” that appears at the top right-hand corner of each page of this document.

With this “Document Code” go to web page [www.adfweb.com/download/](http://www.adfweb.com/download/) and search for the corresponding code on the page. Click on the proper “Document Code” and download the updates.

## REVISION LIST:

Revision	Date	Author	Chapter	Description
1.000	13/03/2019	Nv	All	First release version
1.001	08/10/2019	Nv	All	Revision
1.002	17/05/2021	Ff	All	Revision

## WARNING:

ADFweb.com reserves the right to change information in this manual about our product without warning.

ADFweb.com is not responsible for any error this manual may contain.

## TRADEMARKS:

All trademarks mentioned in this document belong to their respective owners.

**SECURITY ALERT:****GENERAL INFORMATION**

To ensure safe operation, the device must be operated according to the instructions in the manual. When using the device, legal and safety regulation are required for each individual application. The same applies also when using accessories.

**INTENDED USE**

Machines and systems must be designed so the faulty conditions do not lead to a dangerous situation for the operator (i.e. independent limit switches, mechanical interlocks, etc.).

**QUALIFIED PERSONNEL**

The device can be used only by qualified personnel, strictly in accordance with the specifications. Qualified personnel are persons who are familiar with the installation, assembly, commissioning and operation of this equipment and who have appropriate qualifications for their job.

**RESIDUAL RISKS**

The device is state-of-the-art and is safe. The instruments can represent a potential hazard if they are inappropriately installed and operated by untrained personnel. These instructions refer to residual risks with the following symbol:

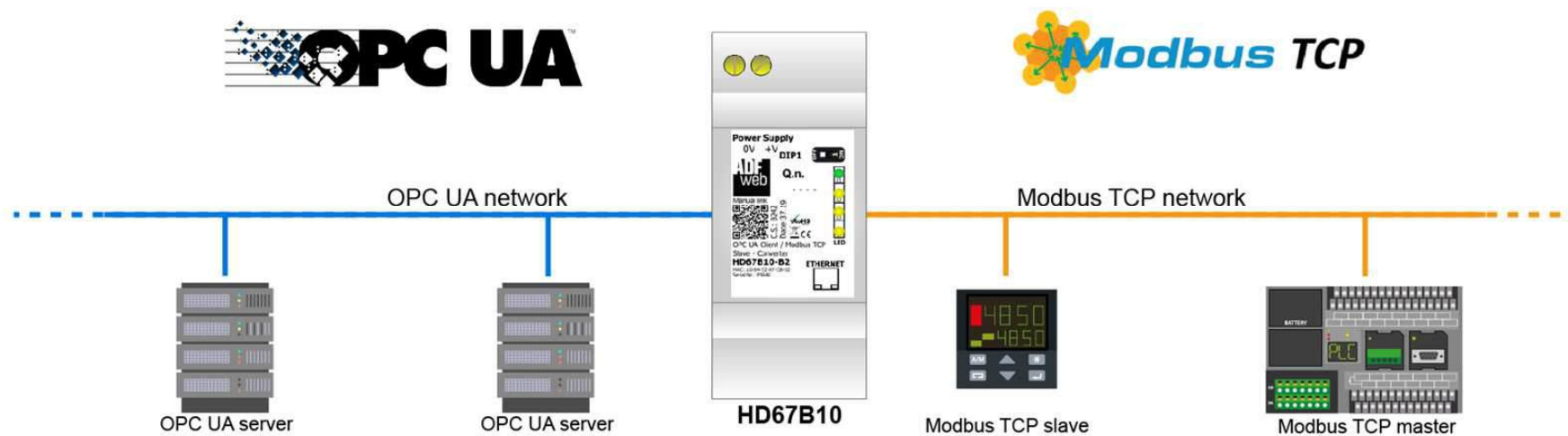


This symbol indicates that non-observance of the safety instructions is a danger for people that could lead to serious injury or death and / or the possibility of damage.

**CE CONFORMITY**

The declaration is made by our company. You can send an email to [support@adfweb.com](mailto:support@adfweb.com) or give us a call if you need it.

**EXAMPLE OF CONNECTION:**



**ADF**  
web  
ADFWeb.com srl  
Tel. +39 0438 309 131 - Fax +39 0438 492 099  
info@adfweb-com - www.adfweb.com

## CONNECTION SCHEME:

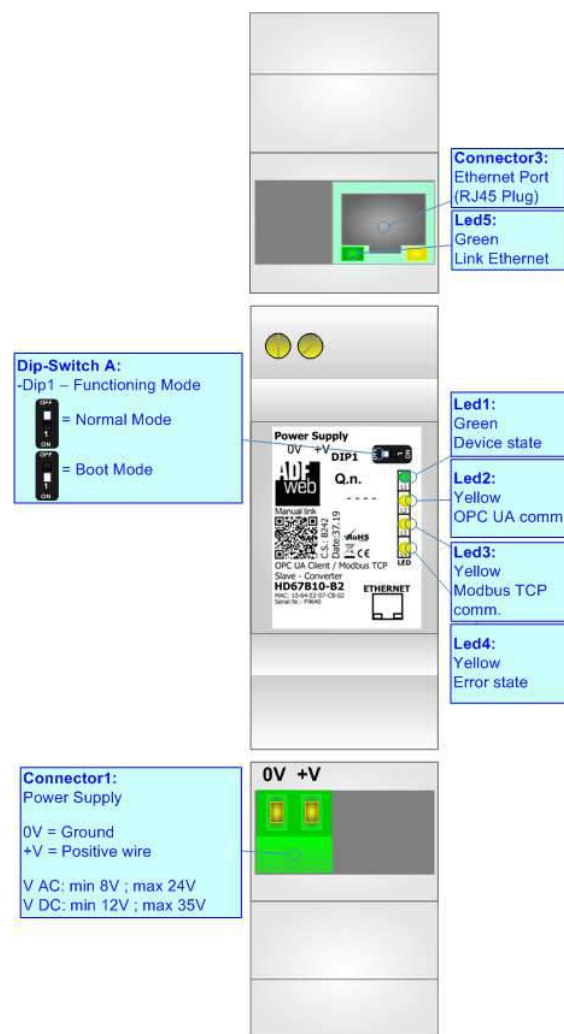


Figure 1: Connection scheme for HD67B10-B2

**CHARACTERISTICS:**

The HD67B10-B2 is a OPC UA Client / Modbus TCP Slave converter.

It allows the following characteristics:

- Up to 1500 bytes in reading and 1500 bytes in writing;
- Two-directional information between Modbus TCP and OPC UA;
- Mountable on 35mm Rail DIN;
- Wide power supply input range: 8...24V AC or 12...35V DC;
- Wide temperature range: -40°C / 85°C [-40°F / +185°F].



**CONFIGURATION:**

You need Compositor SW67B10 software on your PC in order to perform the following:

- Define the parameter of the OPC UA;
- Define the parameter of the Modbus TCP;
- Define the list of OPC UA servers connected to the converter;
- Update the device.

## POWER SUPPLY:

The devices can be powered between a wide range of tensions. For more details see the two tables below.

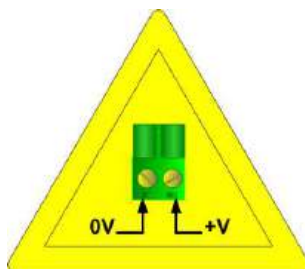
	VAC 		VDC 	
	Vmin	Vmax	Vmin	Vmax
HD67B10-B2	8V	24V	12V	35V

Consumption at 24V DC:

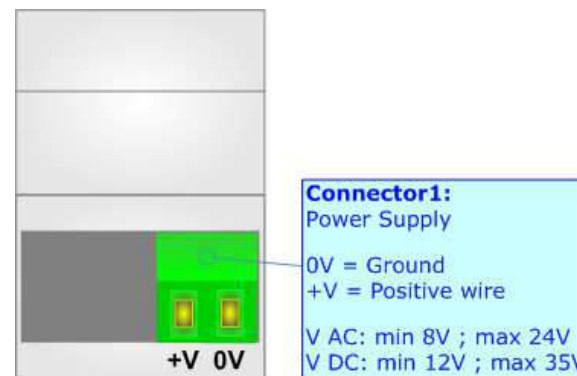
Device	W/VA
HD67B10-B2	4



**Caution: Not reverse the polarity power**



HD67B10-B2



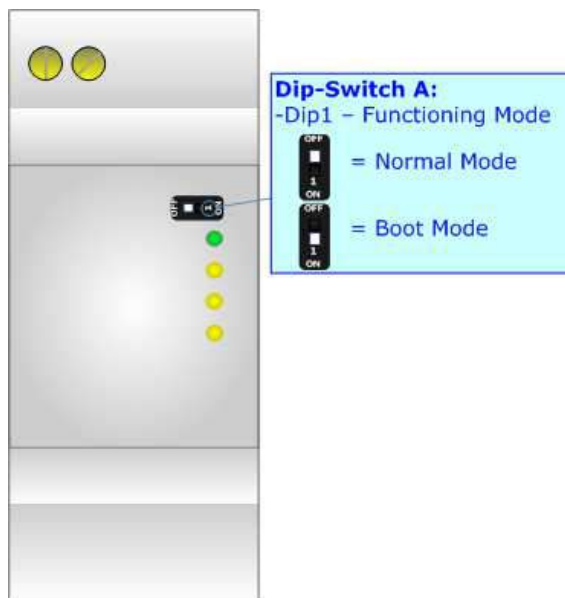
**FUNCTION MODES:**

The device has got two functions mode depending of the position of the Dip1 of 'Dip-Switch A':

- The first, with Dip1 in Off position (factory setting), is used for the normal working of the device.
- The second, with Dip1 in On position, is used for upload the Project/Firmware.

For the operations to follow for the updating (see 'UPDATE DEVICE' section).

According to the functioning mode, the LEDs will have specifics functions (see 'LEDS' section).

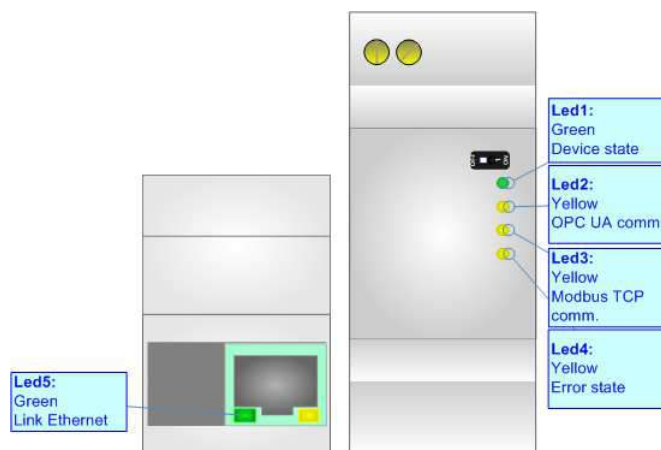




## LEDS:

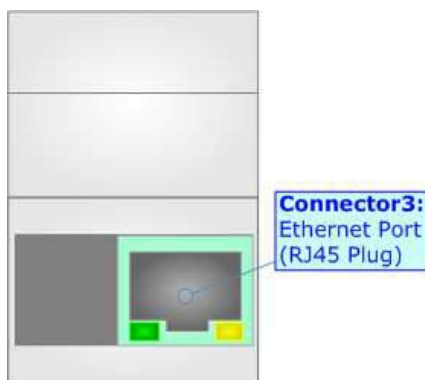
The device has got six LEDs that are used to give information of the functioning status.  
The various meanings of the LEDs are described in the table below.

LED	Normal Mode	Boot Mode
1: Device State (green)	Blinks slowly ( $\sim 1\text{Hz}$ )	<b>Blinks quickly:</b> Boot state <b>Blinks very slowly (<math>\sim 0.5\text{Hz}</math>):</b> update in progress
2: OPC UA comm. (yellow)	<b>Flashing:</b> OPC UA response <b>OFF:</b> No OPC UA response	<b>Blinks quickly:</b> Boot state <b>Blinks very slowly (<math>\sim 0.5\text{Hz}</math>):</b> update in progress
3: Modbus comm. (yellow)	<b>Flashing:</b> Modbus request <b>OFF:</b> No Modbus request	<b>Blinks quickly:</b> Boot state <b>Blinks very slowly (<math>\sim 0.5\text{Hz}</math>):</b> update in progress
4: Error state (yellow)	<b>ON:</b> At least one OPC UA Server is disconnected <b>OFF:</b> all OPC UA Servers are connected	<b>Blinks quickly:</b> Boot state <b>Blinks very slowly (<math>\sim 0.5\text{Hz}</math>):</b> update in progress
5: Link Ethernet (green)	<b>ON:</b> Ethernet cable connected <b>OFF:</b> Ethernet cable disconnected	<b>ON:</b> Ethernet cable connected <b>OFF:</b> Ethernet cable disconnected



**ETHERNET:**

The Ethernet connection must be made using Connector3 of HD67B10-B2 with at least a Category 5E cable. The maximum length of the cable should not exceed 100m. The cable has to conform to the T568 norms relative to connections in cat.5 up to 100 Mbps. To connect the device to an Hub/Switch is recommended the use of a straight cable, to connect the device to a PC/PLC/other is recommended the use of a cross cable.



**USE OF COMPOSITOR SW67B10:**

To configure the Converter, use the available software that runs with Windows called SW67B10. It is downloadable on the site [www.adfweb.com](http://www.adfweb.com) and its operation is described in this document. *(This manual is referenced to the last version of the software present on our web site)*. The software works with MSWindows (XP, Vista, Seven, 8, 10; 32/64bit).

When launching the SW67B10, the window below appears (Fig. 2).

**Note:**

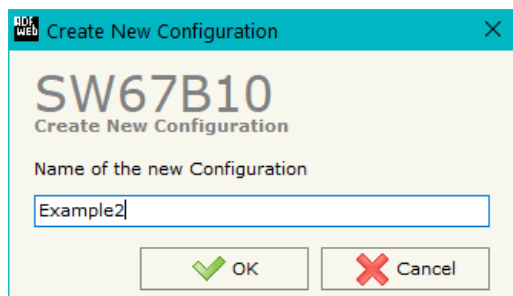
It is necessary to have installed .Net Framework 4.



Figure 2: Main window for SW67B10

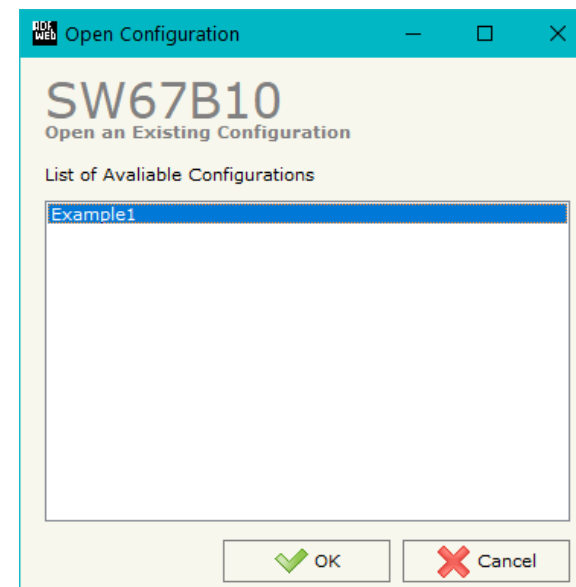
**NEW CONFIGURATION / OPEN CONFIGURATION:**

The “**New Configuration**” button creates the folder which contains the entire device’s configuration.




A device’s configuration can also be imported or exported:

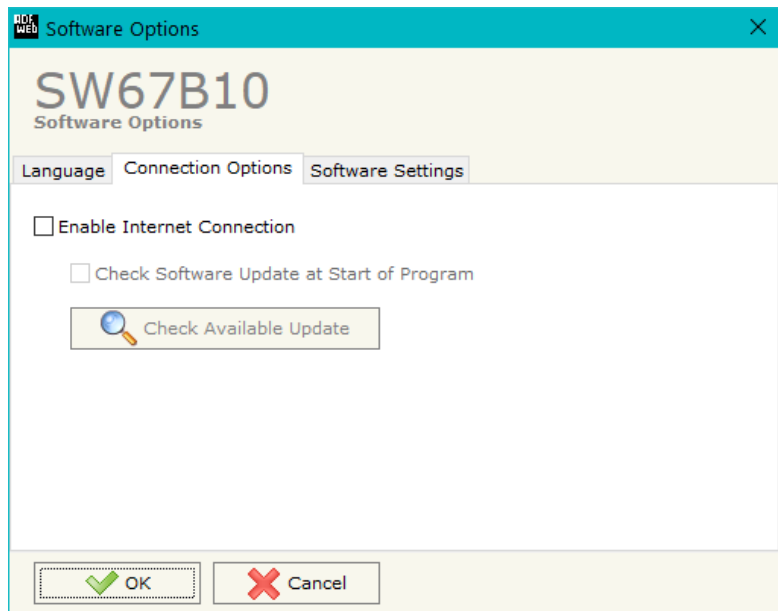
- To clone the configurations of a programmable “OPC UA Client / Modbus TCP Slave - Converter” in order to configure another device in the same manner, it is necessary to maintain the folder and all its contents;
- To clone a project in order to obtain a different version of the project, it is sufficient to duplicate the project folder with another name and open the new folder with the button “**Open Configuration**”.



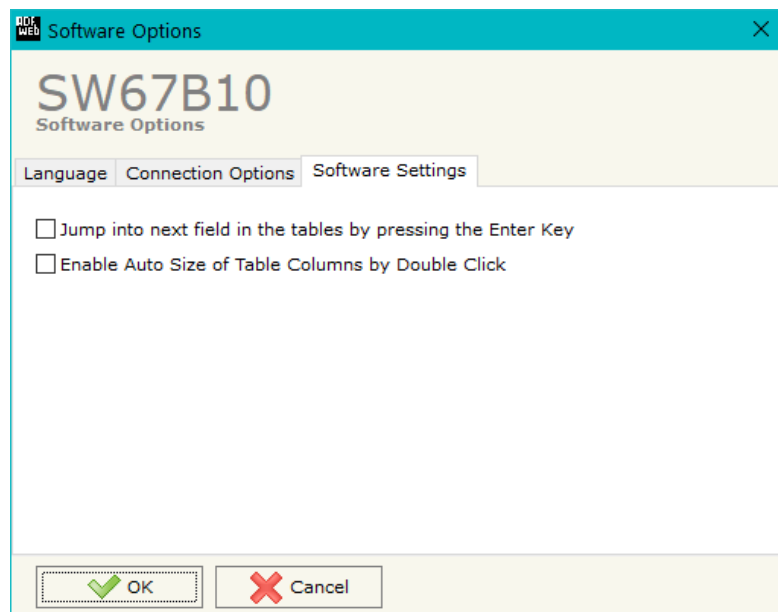
## SOFTWARE OPTIONS:

By pressing the “**Settings**” () button there is the possibility to change the language of the software and check the updatings for the compositor.

In the section “Language” it is possible to change the language of the software.



In the section “Connection Options”, it is possible to check if there are some updatings of the software compositor in ADFweb.com website. Checking the option “**Check Software Update at Start of Program**”, the SW67B10 check automatically if there are updatings when it is launched.



In the section "Software Settings", it is possible to enable/disable some keyboard's commands for an easier navigation inside the tables contained in the different sections of the software.

**SET COMMUNICATION:**

This section define the fundamental communication parameters of two buses, OPC UA Client and Modbus TCP.

By Pressing the **"Set Communication"** button from the main window for SW67B10 (Fig. 2) the window "Set Communication" appears (Fig. 3).

The means of the fields for "Ethernet Connection" are:

- In the field **"Device Name (Hostname)"** the Hostname to assign to the converter is defined;
- If the field **"Obtain an IP Address Automatically (DHCP for Cable Connection)"** is checked, DHCP for LAN connection is enabled;
- If the field **"Enable DNS"** is checked, DNS protocol is enabled;
- In the field **"Primary DNS"** the IP Address of the primary DNS server is defined;
- In the field **"Secondary DNS"** the IP Address of the secondary DNS server is defined.

The means of the fields for "OPC UA Client" are:

- In the field **"IP Address"** the IP address for OPC UA side of the converter is defined;
- In the field **"SubNet Mask"** the SubNet Mask for OPC UA side of the converter is defined;
- In the field **"Gateway"** the default gateway of the net is defined. This feature can be enabled or disabled pressing the Check Box field. This feature is used for going out of the net.

**SW67B10**  
Set Communication Setting

**1. Ethernet Connection**

Device Name (Hostname)

☐ Obtain an IP Address Automatically (DHCP for Cable Connection)

☐ Obtain an IP Address Automatically (DHCP for Wi-Fi Connection)

☐ Enable DNS

Primary DNS

Secondary DNS

**2. OPC UA Client**

IP Address

SubNet Mask

☐ Gateway

**3. Modbus TCP Slave**

IP Address

SubNet Mask

☐ Gateway

Port

**4. NTP (Network Time Protocol)**

Server URL

Poll Time (seconds)

Figure 3: "Set Communication" window

The means of the fields for "Modbus TCP Slave" are:

- In the field "**IP Address**" the IP address for Modbus TCP side of the converter is defined;
- In the field "**SubNet Mask**" the SubNet Mask for Modbus TCP side of the converter is defined;
- In the field "**Gateway**" the default gateway of the net is defined. This feature can be enabled or disabled pressing the Check Box field. This feature is used for going out of the net;
- In the field "**Port**" the port used for Modbus TCP communication is defined.

The means of the fields for "NTP (Network Time Protocol)" are:

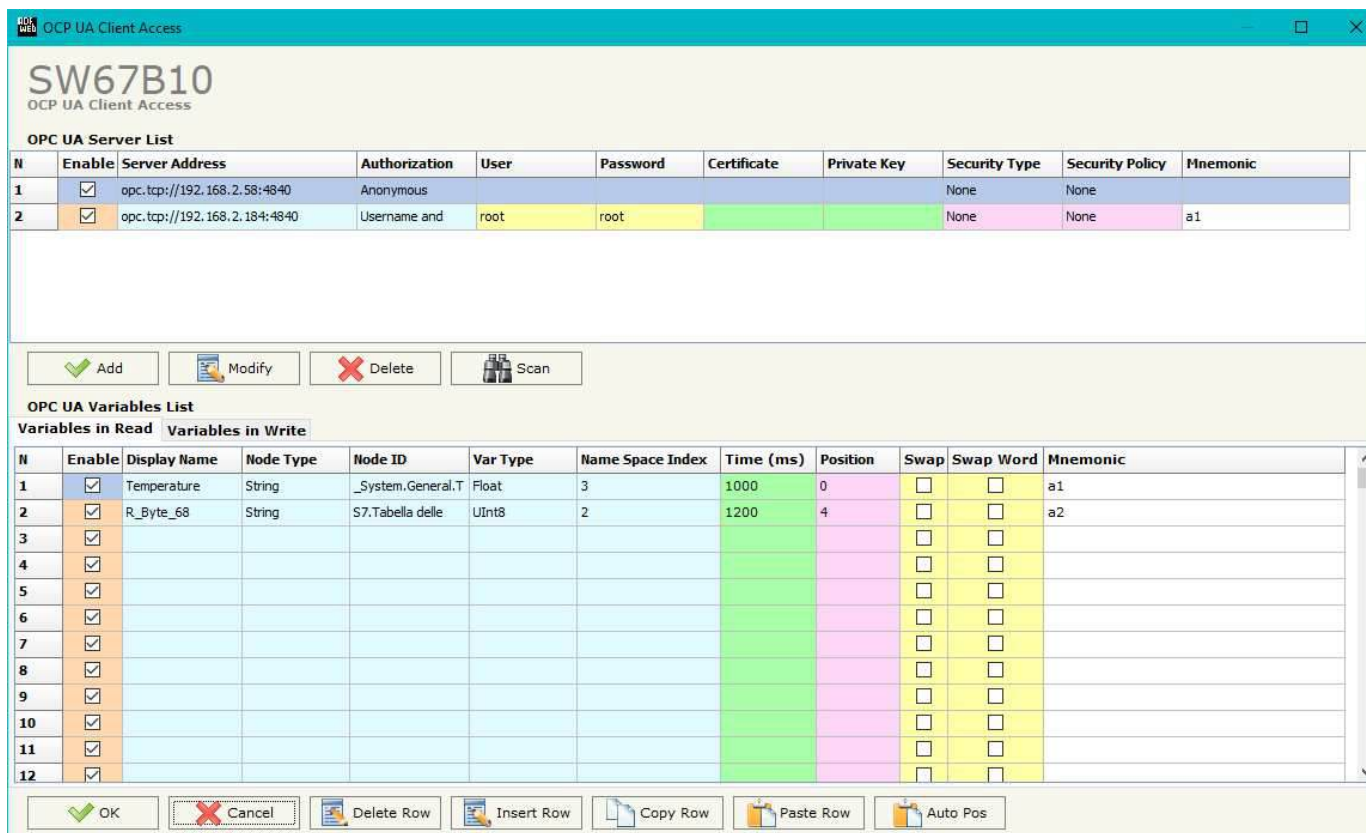
- In the field "**Server URL**" the URL or the IP Address of the NTP Server is defined;
- In the field "**Poll Time (seconds)**" the polling time for the time synchronization is defined.



## OPC UA ACCESS:

By Pressing the “**OPC UA Client Access**” button from the main window for SW67B10 (Fig. 2) the window “OPC UA Client Access” appears (Fig. 4).

This section is used to define the list of the OPC UA Servers to read/write with the OPC UA Client.



**SW67B10**  
OPC UA Client Access

**OPC UA Server List**

N	Enable	Server Address	Authorization	User	Password	Certificate	Private Key	Security Type	Security Policy	Mnemonic
1	<input checked="" type="checkbox"/>	opc.tcp://192.168.2.58:4840	Anonymous					None	None	
2	<input checked="" type="checkbox"/>	opc.tcp://192.168.2.184:4840	Username and	root	root			None	None	a1

☒ Add
 ☒ Modify
 ☒ Delete
 ☒ Scan

**OPC UA Variables List**

Variables in Read Variables in Write

N	Enable	Display Name	Node Type	Node ID	Var Type	Name Space Index	Time (ms)	Position	Swap	Swap Word	Mnemonic
1	<input checked="" type="checkbox"/>	Temperature	String	_System.General.T	Float	3	1000	0	<input type="checkbox"/>	<input type="checkbox"/>	a1
2	<input checked="" type="checkbox"/>	R_Byte_68	String	S7.Tabella delle	UInt8	2	1200	4	<input type="checkbox"/>	<input type="checkbox"/>	a2
3	<input checked="" type="checkbox"/>								<input type="checkbox"/>	<input type="checkbox"/>	
4	<input checked="" type="checkbox"/>								<input type="checkbox"/>	<input type="checkbox"/>	
5	<input checked="" type="checkbox"/>								<input type="checkbox"/>	<input type="checkbox"/>	
6	<input checked="" type="checkbox"/>								<input type="checkbox"/>	<input type="checkbox"/>	
7	<input checked="" type="checkbox"/>								<input type="checkbox"/>	<input type="checkbox"/>	
8	<input checked="" type="checkbox"/>								<input type="checkbox"/>	<input type="checkbox"/>	
9	<input checked="" type="checkbox"/>								<input type="checkbox"/>	<input type="checkbox"/>	
10	<input checked="" type="checkbox"/>								<input type="checkbox"/>	<input type="checkbox"/>	
11	<input checked="" type="checkbox"/>								<input type="checkbox"/>	<input type="checkbox"/>	
12	<input checked="" type="checkbox"/>								<input type="checkbox"/>	<input type="checkbox"/>	

☒ OK
 ☒ Cancel
 ☒ Delete Row
 ☒ Insert Row
 ☒ Copy Row
 ☒ Paste Row
 ☒ Auto Pos

Figure 4: “OPC UA Client Access” window

By clicking on **"Add"**, it is possible to add a new OPC UA Server inserting its characteristics (Server Address, Authorization, Security Type...). The window "Add OPC UA Server" appears (Fig. 5). By clicking on **"Modify"**, it is possible to change these characteristics for the selected Server. The window "Modify OPC UA Server" appears (Fig. 6).



Figure 5: "Add OPC UA Server"

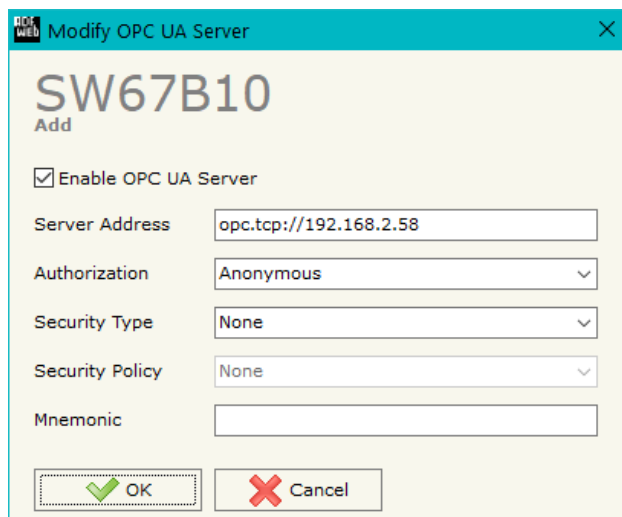
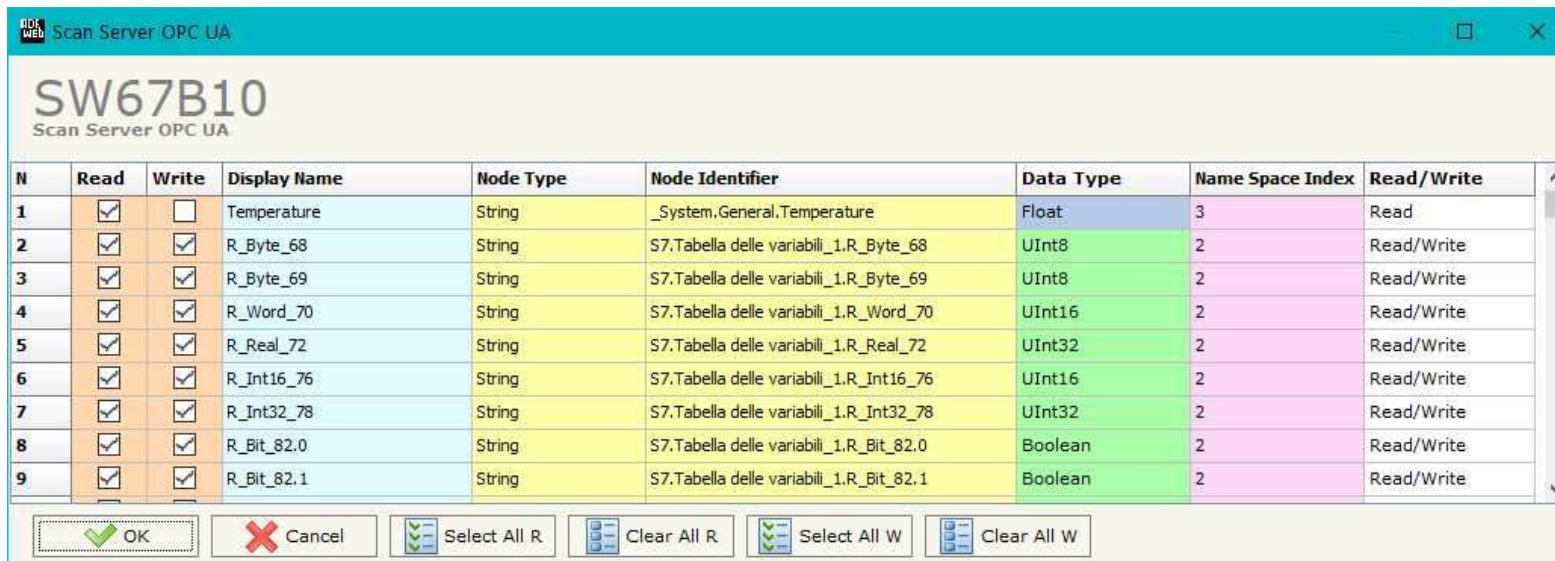


Figure 6: "Modify OPC UA Server"

By clicking on “**Scan**”, it is possible to get the list of available variables from the selected Server. The window “Scan Server OPC UA” appears (Fig. 7).



N	Read	Write	Display Name	Node Type	Node Identifier	Data Type	Name Space Index	Read / Write
1	<input checked="" type="checkbox"/>	<input type="checkbox"/>	Temperature	String	_System.General.Temperature	Float	3	Read
2	<input checked="" type="checkbox"/>	<input checked="" type="checkbox"/>	R_Byte_68	String	S7.Tabella delle variabili_1.R_Byte_68	UInt8	2	Read/Write
3	<input checked="" type="checkbox"/>	<input checked="" type="checkbox"/>	R_Byte_69	String	S7.Tabella delle variabili_1.R_Byte_69	UInt8	2	Read/Write
4	<input checked="" type="checkbox"/>	<input checked="" type="checkbox"/>	R_Word_70	String	S7.Tabella delle variabili_1.R_Word_70	UInt16	2	Read/Write
5	<input checked="" type="checkbox"/>	<input checked="" type="checkbox"/>	R_Real_72	String	S7.Tabella delle variabili_1.R_Real_72	UInt32	2	Read/Write
6	<input checked="" type="checkbox"/>	<input checked="" type="checkbox"/>	R_Int16_76	String	S7.Tabella delle variabili_1.R_Int16_76	UInt16	2	Read/Write
7	<input checked="" type="checkbox"/>	<input checked="" type="checkbox"/>	R_Int32_78	String	S7.Tabella delle variabili_1.R_Int32_78	UInt32	2	Read/Write
8	<input checked="" type="checkbox"/>	<input checked="" type="checkbox"/>	R_Bit_82.0	String	S7.Tabella delle variabili_1.R_Bit_82.0	Boolean	2	Read/Write
9	<input checked="" type="checkbox"/>	<input checked="" type="checkbox"/>	R_Bit_82.1	String	S7.Tabella delle variabili_1.R_Bit_82.1	Boolean	2	Read/Write

Buttons: OK, Cancel, Select All R, Clear All R, Select All W, Clear All W

Figure 7: “Scan Server OPC UA” window

The means of the checkboxes inside the table are:

- If the field “**Read**” is checked, the variable can be read;
- If the field “**Write**” is checked, the variable can be written.



**Note:**

For each variable, it is possible to uncheck these fields and the variable will not be used in read/write.

After the scan, the selected variables will appear in “Variables in Read” and/or “Variables in Write” sections, in the lower part of the window “OPC UA Client Access” (Fig. 4).

The “Variables in Read” section is used to define the OPC UA variables from which take the data of Modbus TCP Slave (Fig. 8).

Variables in Read Variables in Write											
N	Enable	Display Name	Node Type	Node ID	Var Type	Name Space Index	Time (ms)	Position	Swap	Swap Word	Mnemonic
1	<input checked="" type="checkbox"/>	Temperature	String	_System.General.T	Float	3	1000	0	<input type="checkbox"/>	<input type="checkbox"/>	a1
2	<input checked="" type="checkbox"/>	R_Byte_68	String	S7.Tabella delle	UInt8	2	1200	4	<input type="checkbox"/>	<input type="checkbox"/>	a2
3	<input checked="" type="checkbox"/>								<input type="checkbox"/>	<input type="checkbox"/>	
4	<input checked="" type="checkbox"/>								<input type="checkbox"/>	<input type="checkbox"/>	
5	<input checked="" type="checkbox"/>								<input type="checkbox"/>	<input type="checkbox"/>	
6	<input checked="" type="checkbox"/>								<input type="checkbox"/>	<input type="checkbox"/>	
7	<input checked="" type="checkbox"/>								<input type="checkbox"/>	<input type="checkbox"/>	
8	<input checked="" type="checkbox"/>								<input type="checkbox"/>	<input type="checkbox"/>	
9	<input checked="" type="checkbox"/>								<input type="checkbox"/>	<input type="checkbox"/>	
10	<input checked="" type="checkbox"/>								<input type="checkbox"/>	<input type="checkbox"/>	
11	<input checked="" type="checkbox"/>								<input type="checkbox"/>	<input type="checkbox"/>	
12	<input checked="" type="checkbox"/>								<input type="checkbox"/>	<input type="checkbox"/>	

Figure 8: “Variables in Read” section

The means of the fields are:

- If the field “**Enable**” is checked, the OPC UA variable is enabled;
- In the field “**Display name**” the name of the OPC UA variable is defined;
- In the field “**Node Type**” the type of the OPC UA node, which includes the variable, is defined;
- In the field “**Node ID**” the name of the OPC UA node, which includes the variable, is defined;
- In the field “**Var Type**” the data format of the OPC UA variable is defined;
- In the field “**Name Space Index**” the Name Space Index of the node, which includes the variable, is defined;
- In the field “**Time (ms)**” the delay in ms between two readings of the variable is defined;
- In the field “**Position**” the starting byte of the internal memory arrays where saving the value is defined;
- If the field “**Swap**” is checked, the data from the OPC UA variables are swapped;
- If the field “**Swap Word**” is checked, the OPC UA words are swapped;
- In the field “**Mnemonic**” a description of the variable is defined.

The “Variables in Write” section is used to define the OPC UA variables to which map the data of Modbus TCP Slave (Fig. 9).

Variables in Read Variables in Write														
N	Enable	Display Name	Node Type	Node ID	Var Type	Name	On Change	On CMD	On Timer	Time (ms)	Position	Swap	Swap Word	Mnemonic
1	<input checked="" type="checkbox"/>	R_Byte_68	String	S7.Tabella delle	UInt8	2	<input type="checkbox"/>	<input type="checkbox"/>	<input checked="" type="checkbox"/>	5000	0	<input type="checkbox"/>	<input type="checkbox"/>	b1
2	<input checked="" type="checkbox"/>	R_Byte_69	String	S7.Tabella delle	UInt8	2	<input checked="" type="checkbox"/>	<input checked="" type="checkbox"/>	<input checked="" type="checkbox"/>	2500	1	<input type="checkbox"/>	<input type="checkbox"/>	b2
3	<input checked="" type="checkbox"/>						<input type="checkbox"/>	<input type="checkbox"/>	<input type="checkbox"/>			<input type="checkbox"/>	<input type="checkbox"/>	
4	<input checked="" type="checkbox"/>						<input type="checkbox"/>	<input type="checkbox"/>	<input type="checkbox"/>			<input type="checkbox"/>	<input type="checkbox"/>	
5	<input checked="" type="checkbox"/>						<input type="checkbox"/>	<input type="checkbox"/>	<input type="checkbox"/>			<input type="checkbox"/>	<input type="checkbox"/>	
6	<input checked="" type="checkbox"/>						<input type="checkbox"/>	<input type="checkbox"/>	<input type="checkbox"/>			<input type="checkbox"/>	<input type="checkbox"/>	
7	<input checked="" type="checkbox"/>						<input type="checkbox"/>	<input type="checkbox"/>	<input type="checkbox"/>			<input type="checkbox"/>	<input type="checkbox"/>	
8	<input checked="" type="checkbox"/>						<input type="checkbox"/>	<input type="checkbox"/>	<input type="checkbox"/>			<input type="checkbox"/>	<input type="checkbox"/>	
9	<input checked="" type="checkbox"/>						<input type="checkbox"/>	<input type="checkbox"/>	<input type="checkbox"/>			<input type="checkbox"/>	<input type="checkbox"/>	
10	<input checked="" type="checkbox"/>						<input type="checkbox"/>	<input type="checkbox"/>	<input type="checkbox"/>			<input type="checkbox"/>	<input type="checkbox"/>	
11	<input checked="" type="checkbox"/>						<input type="checkbox"/>	<input type="checkbox"/>	<input type="checkbox"/>			<input type="checkbox"/>	<input type="checkbox"/>	
12	<input checked="" type="checkbox"/>						<input type="checkbox"/>	<input type="checkbox"/>	<input type="checkbox"/>			<input type="checkbox"/>	<input type="checkbox"/>	

☒ OK
☒ Cancel
☒ Delete Row
☒ Insert Row
☒ Copy Row
☒ Paste Row
☒ Auto Pos

Figure 9: “Variables in Write” section

In “Variables in Write” section (Fig. 8), the means of the fields are:

- If the field “**Enable**” is checked, the OPC UA variable is enabled;
- In the field “**Display name**” the name of the OPC UA variable is defined;
- In the field “**Node Type**” the type of the OPC UA node, which includes the variable, is defined;
- In the field “**Node ID**” the name of the OPC UA node, which includes the variable, is defined;
- In the field “**Var Type**” the data format of the OPC UA variable is defined;
- In the field “**Name Space Index**” the Name Space Index of the node, which includes the variable, is defined;
- If the field “**On Change**” is checked, the OPC UA variable is sent when the data on Modbus TCP changes the value;
- If the field “**On CMD**” is checked, the OPC UA variable is sent when a Modbus TCP request is received;
- If the field “**On Timer**” is checked, the OPC UA variable is sent cyclically;
- In the field “**Time (ms)**” the delay in ms between two writings of the variable is defined (if “On Timer” is checked);

- In the field "**Position**" the starting byte of the internal memory arrays where getting the value is defined;
- If the field "**Swap**" is checked, the data written to the OPC UA variables are swapped;
- If the field "**Swap Word**" is checked, the data written to the OPC UA words are swapped;
- In the field "**Mnemonic**" a description of the variable is defined.

**Note:**

A variable can be added manually in "Variables in Read" and/or "Variables in Write" sections without scanning the OPC UA Server.

**UPDATE DEVICE:**

By pressing the **"Update Device"** button, it is possible to load the created Configuration into the device; and also the Firmware, if necessary. This by using the Ethernet port.

If you don't know the actual IP address of the device you have to use this procedure:

- Turn OFF the Device;
- Put Dip1 of 'Dip-Switch A' in ON position;
- Turn ON the device
- Connect the Ethernet cable;
- Insert the IP **"192.168.2.205"**;
- Select which operations you want to do;
- Press the **"Execute update firmware"** button to start the upload;
- When all the operations are "OK" turn OFF the Device;
- Put Dip1 of 'Dip-Switch A' in OFF position;
- Turn ON the device.

If you know the actual IP address of the device, you have to use this procedure:

- Turn ON the Device with the Ethernet cable inserted;
- Insert the actual IP of the Converter;
- Select which operations you want to do;
- Press the **"Execute update firmware"** button to start the upload;
- When all the operations are "OK" the device automatically goes at Normal Mode.

At this point the configuration/firmware on the device is correctly updated.

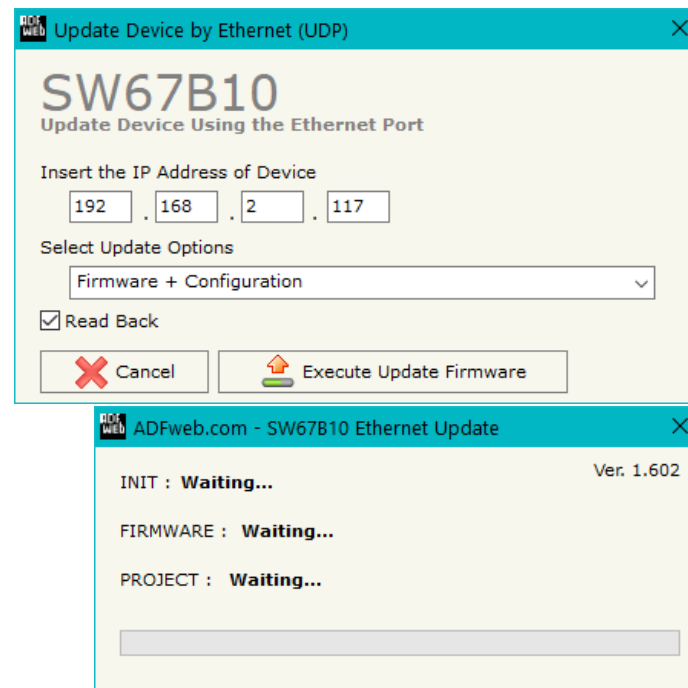


Figure 10: "Update device" windows



**Note:**

When you receive the device, for the first time, you also have to update the Firmware in the HD67B10 device.

**Warning:**

If Fig. 11 appears when you try to do the Update try these points before seeking assistance:

- Check if the serial cable is connected between the PC and the device;
- Try to repeat the operations for the updating;
- Try with another PC;
- Try to restart the PC;
- Check the LAN settings;
- If you are using the program inside a Virtual Machine, try to use in the main Operating System;
- If you are using Windows Seven, Vista, 8 or 10 make sure that you have the administrator privileges;
- In case you have to program more than one device, using the "UDP Update", you have to cancel the ARP table every time you connect a new device on Ethernet. For do this you have to launch the "Command Prompt" and write the command "arp -d". Pay attention that with Windows Vista, Seven, 8, 10 you have to launch the "Command Prompt" with Administrator Rights;
- Pay attention at Firewall lock.

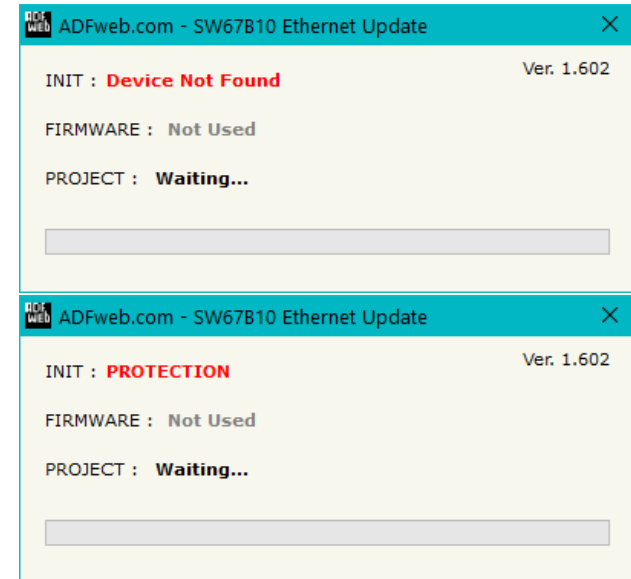


Figure 11: "Error" window

**Warning:**

In the case of HD67B10 you have to use the software "SW67B10": [www.adfweb.com/download/filefold/SW67B10.zip](http://www.adfweb.com/download/filefold/SW67B10.zip).



## MODBUS MAP:

On Modbus side, the map is created automatically.

Data in reading:

Type	Address	Function	Description
Input Register	0	04	Input Bytes (Position) 0-1 of internal array
Input Register	1	04	Input Bytes (Position) 2-3 of internal array
Input Register	2	04	Input Bytes (Position) 4-5 of internal array
.			
Input Register	749	04	Input Bytes (Position) 1498-1499 of internal array

Data in writing:

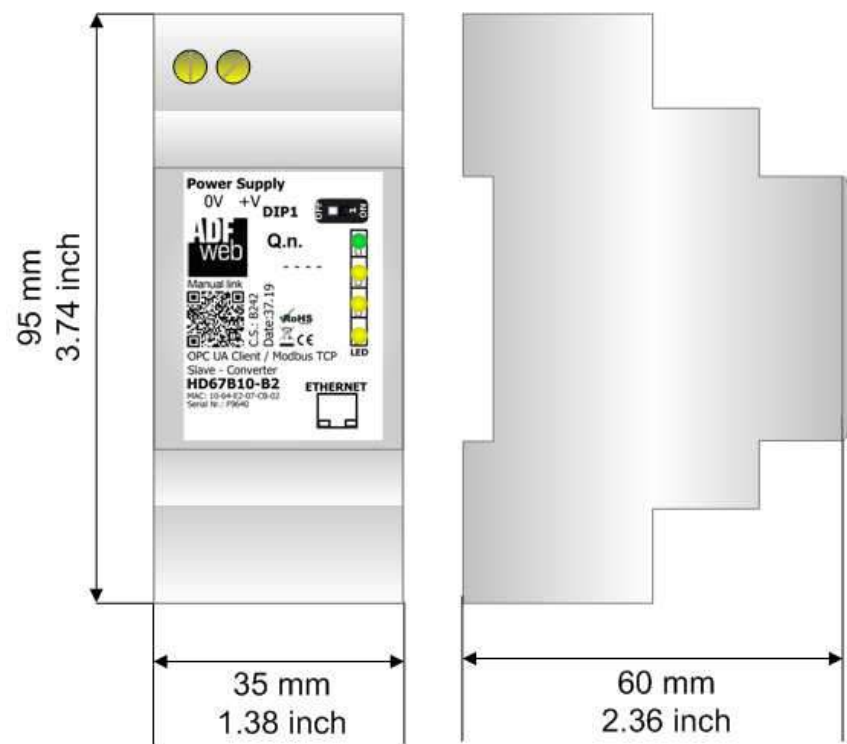
Type	Address	Function	Description
Holding Register	0	R: 03 W: 06/16	Output Bytes 0-1 of internal array
Holding Register	1	R: 03 W: 06/16	Output Bytes 2-3 of internal array
Holding Register	2	R: 03 W: 06/16	Output Bytes 4-5 of internal array
.			
Holding Register	749	R: 03 W: 06/16	Output Bytes 1498-1499 of internal array



### Note:

The data can be read/written as single bits too using Input/Coil Status (Function 02 and Functions 01/05/15).

## MECHANICAL DIMENSIONS:



Housing: PVC  
Weight: 200g  
(Approx)

Figure 12: Mechanical dimensions scheme for HD67B10-B2

## ORDERING INFORMATION:

The ordering part number is formed by a valid combination of the following:

### **HD67B10 – B 2**

#### **Connectors Type**

2: Fixed Screw Terminal

#### **Enclosure Type**

B: Modulbox 4M, 35mm DIN Rail mounting

#### **Device Family**

HD67B10: OPC UA Client / Modbus TCP Slave - Converter

Order Code: **HD67B10-B2** - OPC UA Client / Modbus TCP Slave - Converter

## ACCESSORIES:

Order Code: **AC34011** - 35mm Rail DIN - Power Supply 220/240V AC 50/60Hz – 12 V DC

Order Code: **AC34012** - 35mm Rail DIN - Power Supply 220/240V AC 50/60Hz – 24 V DC

**DISCLAIMER:**

All technical content within this document can be modified without notice. The content of the document is a under continual renewal. For losses due to fire, earthquake, third party access or other accidents, or intentional or accidental abuse, misuse, or use under abnormal conditions repairs are charged to the user. ADFweb.com S.r.l. will not be liable for accidental loss of use or inability to use this product, such as loss of business income. ADFweb.com S.r.l. shall not be liable for consequences of improper use.

**OTHER REGULATIONS AND STANDARDS:****WEEE INFORMATION**

Disposal of old electrical and electronic equipment (as in the European Union and other European countries with separate collection systems).

This symbol on the product or on its packaging indicates that this product may not be treated as household rubbish. Instead, it should be taken to an applicable collection point for the recycling of electrical and electronic equipment. If the product is disposed correctly, you will help prevent potential negative environmental factors and impact of human health, which could otherwise be caused by inappropriate disposal. The recycling of materials will help to conserve natural resources. For more information about recycling this product, please contact your local city office, your household waste disposal service or the shop where you purchased the product.

**RESTRICTION OF HAZARDOUS SUBSTANCES DIRECTIVE**

The device respects the 2002/95/EC Directive on the restriction of the use of certain hazardous substances in electrical and electronic equipment (commonly referred to as Restriction of Hazardous Substances Directive or RoHS).

**CE MARKING**

The product conforms with the essential requirements of the applicable EC directives.

**WARRANTIES AND TECHNICAL SUPPORT:**

For fast and easy technical support for your ADFweb.com SRL products, consult our internet support at [www.adfweb.com](http://www.adfweb.com). Otherwise contact us at the address [support@adfweb.com](mailto:support@adfweb.com)

**RETURN POLICY:**

If while using your product you have any problem and you wish to exchange or repair it, please do the following:

- Obtain a Product Return Number (PRN) from our internet support at [www.adfweb.com](http://www.adfweb.com). Together with the request, you need to provide detailed information about the problem.
- Send the product to the address provided with the PRN, having prepaid the shipping costs (shipment costs billed to us will not be accepted).

If the product is within the warranty of twelve months, it will be repaired or exchanged and returned within three weeks. If the product is no longer under warranty, you will receive a repair estimate.



**ADFweb.com S.r.l.**  
Via Strada Nuova, 17  
IT-31010 Mareno di Piave  
TREVISO (Italy)  
Phone +39.0438.30.91.31  
Fax +39.0438.49.20.99  
[www.adfweb.com](http://www.adfweb.com)

