



LG01 LoRa Gateway User Manual

Document Version: 1.4

Firmware Version: IoT Mesh v4.3.3

Version	Description	Date
0.1	Initiate	2016-Oct-29
1.0	Release, Add ThingSpeak Examples	2016-Dec-9
1.1	Add Example List for connecting to TTN	2017-May-17
1.2	Add Link for RN2483 Support, OLG01 Antenna description , modify fallback ip description, Add More FAQ links, Console README, Web update sketch, Add Hardware Source code	2017-Sep-7
1.3	Fix fall back ip typo, Point to latest source code in both reference and how to. Modify Radiohead install text, modify simple LoRa client simple text. Improve Example with more explanation	2017-11-5
1.4	Add MQTT Examples and add watch dog feature	2018-04-03

Index:

1. Introduction	6
1.1 What is LG01	6
1.2 Specifications	6
1.3 Features.....	9
1.4 System Structure	9
1.5 Applications.....	10
1.6 Hardware Variants.....	11
1.7 Install SIM card in EC20/UC20 3G/4G module.....	11
2. Quick Start Guide	12
2.1 Access and config LG01	12
2.2 Program microcontroller.	13
2.2.1 Download and configure Arduino IDE.....	13
2.2.2 Upload a sketch in the MCU	15
2.3 Simple LoRa wireless example	17
2.3.1 Installing LoRa Library	18
2.3.2 Upload Sketch to LoRa Client	19
2.3.3 Upload Sketch to LoRa Gateway LG01	20
2.3.4 Analyze Test Result.....	21
3. Typical Network Setup	22
3.1 Overview	22
3.2 General WiFi AP Network	23
3.3 WAN Port Internet Mode	24
3.4 WiFi Client Mode.....	24
3.5 Mesh WiFi Network	25
3.5.1 Mesh Gateway Set Up.....	25
3.5.2 Mesh Client Set Up.....	26
3.6 USB Dial Up Modem Set Up	29
3.7 USB 3G/4G Ethernet Dongle	30
4. Linux System.....	32
4.1 SSH Access for Linux console	32
4.2 Edit and Transfer files.....	33
4.3 File System	33
4.4 Package maintain system	34
5. Bridge Library	35
5.1 The Use of Console	36
6. Advance Management	37
6.1 Reset Network or Reset to Factory Default	37
7. Upgrade Linux Firmware	38

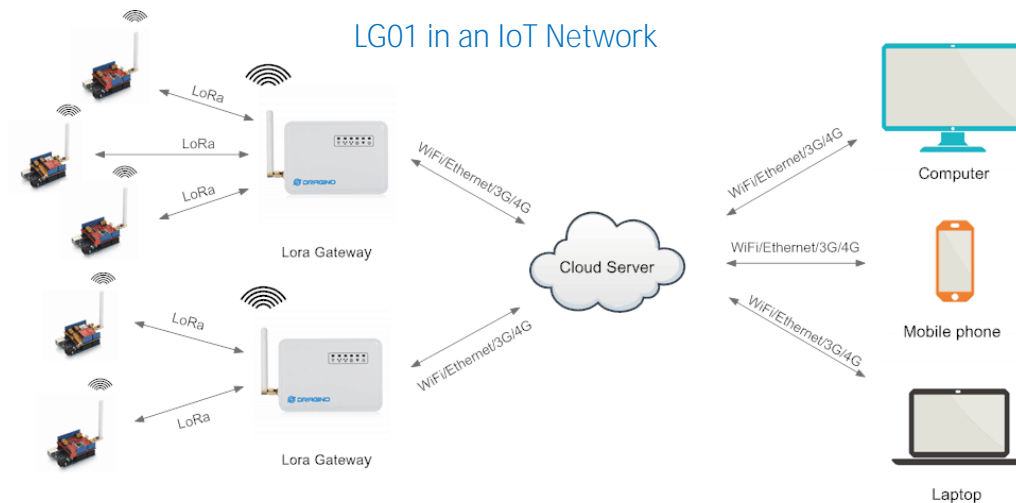
7.1 Upgrade via Web UI	38
7.2 Upgrade via Linux console	38
8. Upgrade Micro Controller Sketch.....	39
8.1 Upgrade Sketch via Arduino IDE	39
8.2 Upgrade Sketch via Web UI	39
8.3 Auto update MCU	40
9. Example: Integrate LoRa with RESTFul API	42
9.1 What is RESTFul API?.....	42
9.2 Configure IoT Server	42
9.3 Step by Step Uplink Test.....	43
9.3.1 Try RESTful API call in web	44
9.3.2 Try RESTful API call with LG01 Linux command	46
9.3.3 Integrate LoRa, Bridge and Curl	47
9.4 Step by Step Downlink Test	48
9.4.1 Create Talkback command and try RESTful API call in web	49
9.4.2 Try RESTful API call with LG01 Linux command	51
9.4.3 Integrate LoRa, Bridge and Curl	52
10. Example: Integrate LoRa with MQTT API	53
10.1 What is MQTT API?	53
10.2 Step by Step Uplink Test.....	53
10.2.1 Simulate MQTT Publish via Desktop MQTT tool..	错误!未定义书签。
10.2.2 Try MQTT Publish with LG01 Linux command	55
10.2.3 Integrate LoRa, Bridge and mosquitto_pub.....	57
10.3 Step by Step Downlink Test	61
11. Advance Examples	62
11.1 Example for Connecting to TTN LoRaWAN server	62
11.2 Multiple Nodes examples	62
11.3 How to use the sensor pin of LG01-S?	64
11.4 More Examples	66
12. FAQ.....	67
12.1 Why there is 433/868/915 version LoRa part?	67
12.2 What is the frequency range of LG01 LoRa part?	67
12.3 What kind of LoRa devices can the gateway support?	67
12.4 How many nodes can the LG01 support?	67
12.5 What kind of Server the LG01 can support?	67
12.6 Can I make my own firmware for LG01? Where can I find the source code of LG01?	69
12.7 How to get more examples for this device?	69
12.8 What is the Antenna require for OLG01?	69
12.9 More FAQs about general LoRa questions.....	69
13. Trouble Shooting	70
13.1 I can't download the Dragino profile in Arduino IDE.	70

13.2 Bridge between MCU and Linux module doesn't work.	71
13.3 Arduino IDE doesn't detect LG01	71
13.4 I get kernel error when install new package, how to fix?	71
13.5 How to recover the LG01 if firmware crash	72
13.6 I configured LG01 for WiFi access and lost its IP. What to do now?	73
13.7 See GPIO20 issue when uploading.	73
14. Order Info.....	74
15. Packing Info	74
16. Support.....	74
17. Reference	错误!未定义书签。

1. Introduction

1.1 What is LG01

The LG01 is an open source single channel LoRa Gateway. It lets you bridge LoRa wireless network to an IP network base on WiFi, Ethernet, 3G or 4G cellular. LG01 runs on open source embedded Linux system; it has USB host port and has full Ethernet and 802.11 b/g/n WiFi capabilities. The USB host port can be used to connect cellular modules so LG01 is very flexible to bridge LoRa Network to different kinds of network to fit user's requirement.



1.2 Specifications

Hardware System:

Linux Part:

- 400Mhz ar9331 processor
- 64MB RAM
- 16MB Flash

MCU Part:

- MCU: ATmega328P
- Flash: 32KB
- SRAM: 2KB
- EEPROM: 1KB

Interface:

- Power Input: 9 ~ 24v DC
- 2 x RJ45 ports
- USB 2.0 Host port x 1
- Internal USB 2.0 Host Interface x 1

WiFi Spec:

- IEEE 802.11 b/g/n
- Frequency Band: 2.4 ~ 2.462GHz
- Tx power:
 - ✓ 11n tx power : mcs7/15: 11db mcs0 : 17db
 - ✓ 11b tx power: 18db
 - ✓ 11g 54M tx power: 12db
 - ✓ 11g 6M tx power: 18db
- Wifi Sensitivity
 - ✓ 11g 54M : -71dbm
 - ✓ 11n 20M : -67dbm

LoRa Spec:

- Frequency Range:
 - ✓ Band 1 (HF): 862 ~ 1020 Mhz
 - ✓ Band 2 (LF): 410 ~ 528 Mhz
- 168 dB maximum link budget.
- +20 dBm - 100 mW constant RF output vs.
- +14 dBm high efficiency PA.
- Programmable bit rate up to 300 kbps.
- High sensitivity: down to -148 dBm.
- Bullet-proof front end: IIP3 = -12.5 dBm.
- Excellent blocking immunity.
- Low RX current of 10.3 mA, 200 nA register retention.
- Fully integrated synthesizer with a resolution of 61 Hz.
- FSK, GFSK, MSK, GMSK, LoRaTM and OOK modulation.
- Built-in bit synchronizer for clock recovery.
- Preamble detection.
- 127 dB Dynamic Range RSSI.
- Automatic RF Sense and CAD with ultra-fast AFC.
- Packet engine up to 256 bytes with CRC.
- Built-in temperature sensor and low battery indicator.

Cellular 4G LTE (optional):

- Quectel [EC20 LTE module](#)
- Micro SIM Slot
- Internal 4G Antenna + External 4G Sticker Antenna.
- Up to 100Mbps downlink and 50Mbps uplink data rates
- Worldwide LTE, UMTS/HSPA+ and GSM/GPRS/EDGE coverage
- MIMO technology meets demands for data rate and link reliability in modem wireless communication systems

Cellular 3G UMTS/HSPA+ (optional):

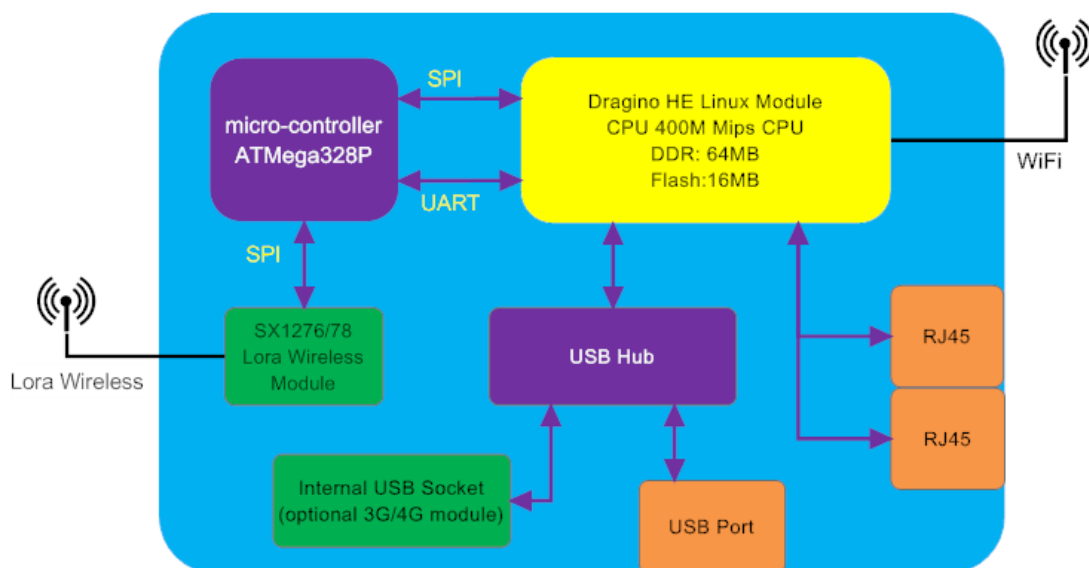
- Quectel [UC20 LTE module](#)
- Micro SIM Slot
- Internal 3G/4G Antenna + External 3G/4G Sticker Antenna.
- Up to 14.4Mbps downlink and 5.76Mbps uplink data rates
- Worldwide UMTS/HSPA+ and GSM/GPRS/EDGE coverage
- High-quality data and image transmission even in harsh environment
- Primary and diversity receive paths are designed for equivalent noise-figure performance

1.3 Features

- ✓ Open source Linux (OpenWrt) inside. User can modify or compile the firmware with custom features and own brand.
- ✓ Low power consumption.
- ✓ Compatible with Arduino IDE 1.5.4 or later, user can program, debug or upload sketch to the MCU via Arduino IDE.
- ✓ Managed by Web GUI, SSH via LAN or WiFi.
- ✓ Software upgradable via network.
- ✓ Auto-Provisioning.
- ✓ Built-in web server.
- ✓ Support internet connection via LAN port, WiFi or 3G /4G dongle.
- ✓ Failsafe design provides robustly system.

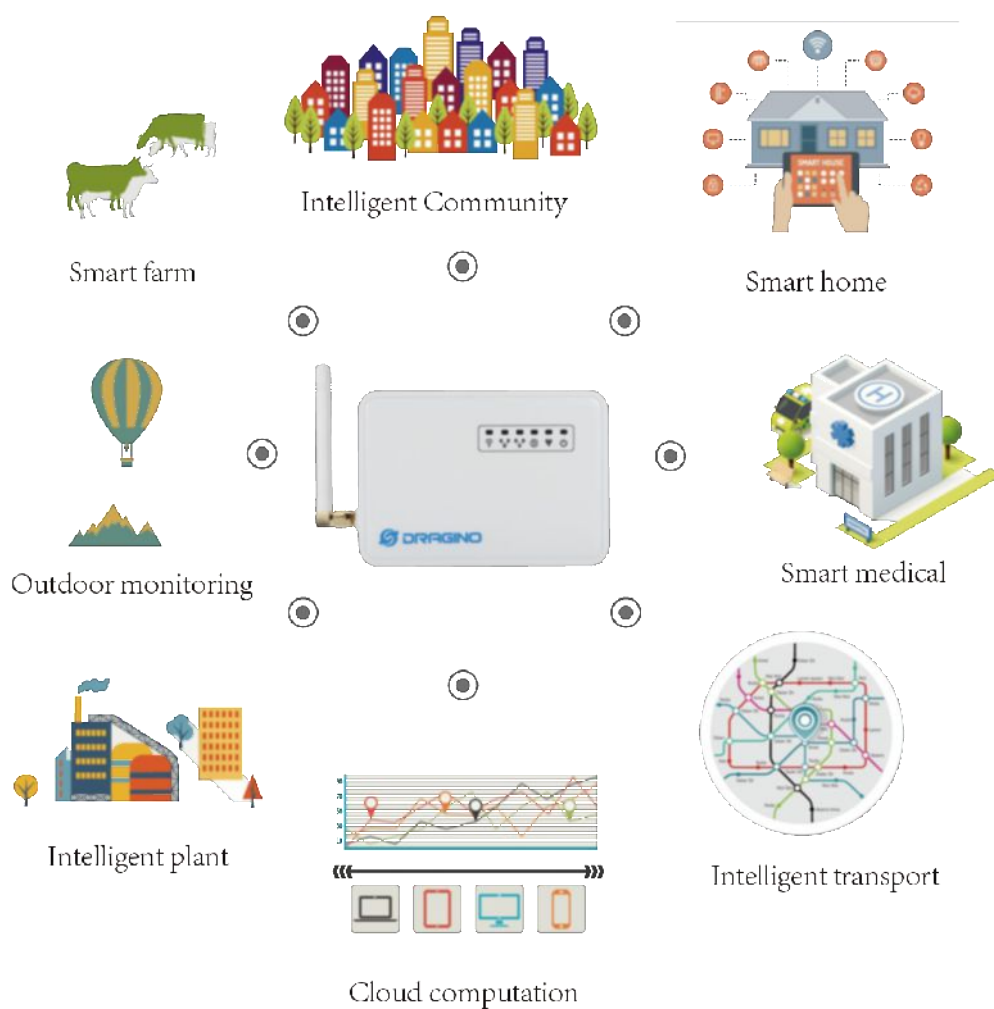
1.4 System Structure

LG01 System Overview:






1.5 Applications

Dragino Lora Gateway for IoT Applications



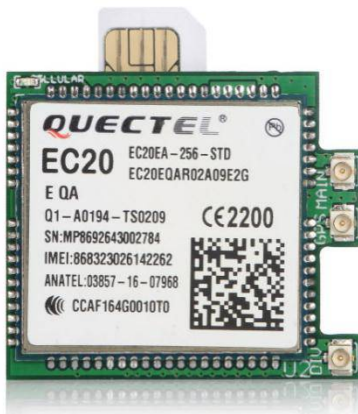
1.6 Hardware Variants

There are different LG01 variants for difference applications. Below table shows the difference between these models.

Model	Photo	Description
LG01-P		The most general version can be used as a LoRa Gateway.
LG01-S		Include screw terminal which can connect to external sensors
OLG01		Outdoor version, this version doesn't include LoRa antenna, instead, it has a SMA connector, user can connect it to a high gain LoRa antenna. It can be powered by a passive PoE adapter.

1.7 Install SIM card in EC20/UC20 3G/4G module

Please use below direction to install the SIM card.



2. Quick Start Guide

2.1 Access and config LG01

The LG01 is configured as a WiFi AP by factory default. User can access and configure the LG01 after connect to its WiFi network.

At the first boot of LG01, it will auto generate an unsecure WiFi network call *dragino2-xxxxxx*

User can use the laptop to connect to this WiFi network. The laptop will get an IP address 10.130.1.xxx and the LG01 has the default IP *10.130.1.1*



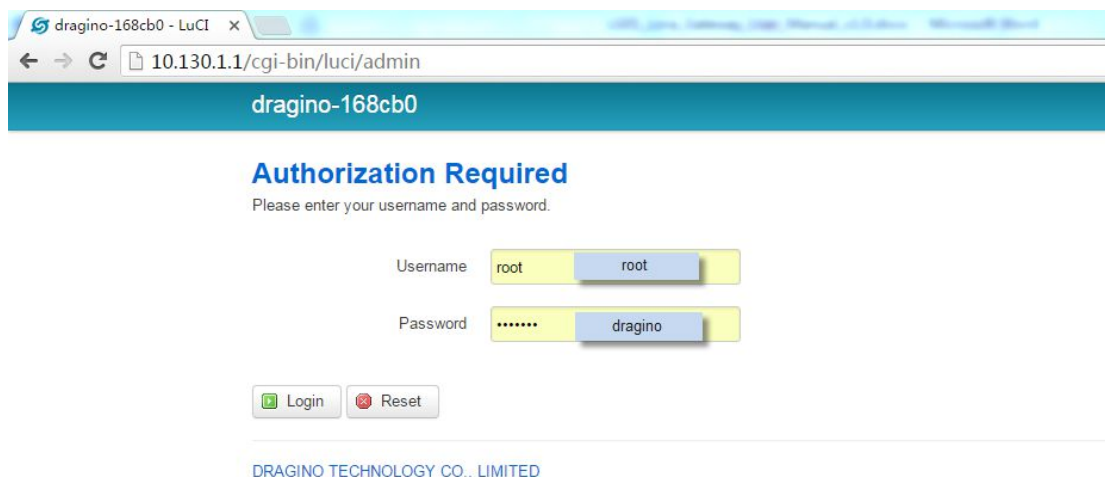
Open a browser in the laptop and type 10.130.1.1

User will see the login interface of LG01.

The account for Web Login is:

User Name: root

Password: dragino



2.2 Program microcontroller.

The MCU (microcontroller) M328P is used to communicate with LoRa Radio part and Dragino Linux module. The program language for the MCU is based on C and program tool is Arduino IDE. Below the way shows how to do program it.

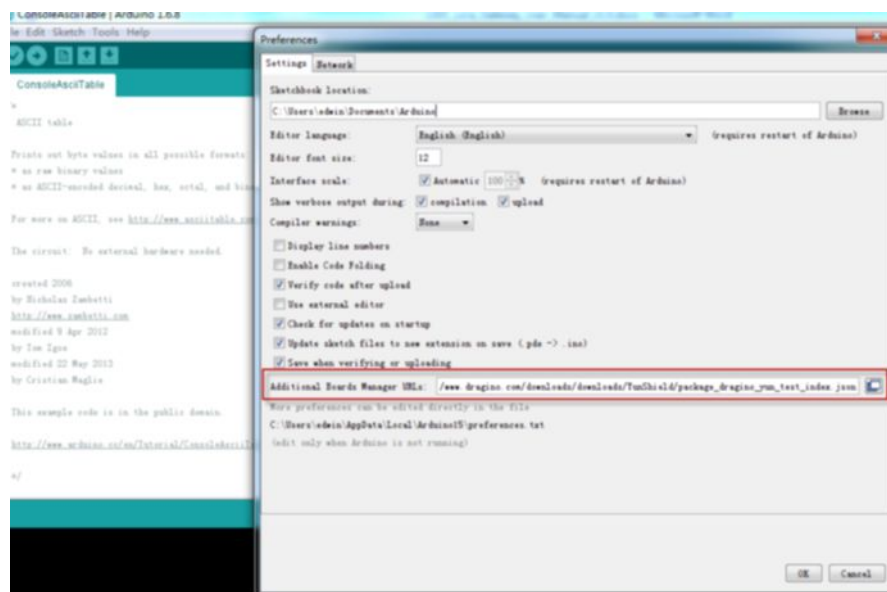
2.2.1 Download and configure Arduino IDE

- Download the latest Arduino Software(IDE) from Arduino official site:

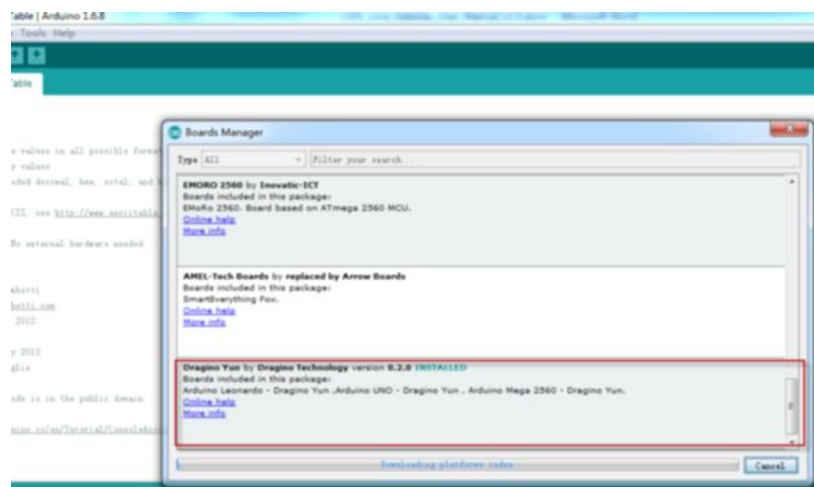
<https://www.arduino.cc/en/Main/Software>

Install the IDE in the PC, open it and click **File --> Preference**, add below URL

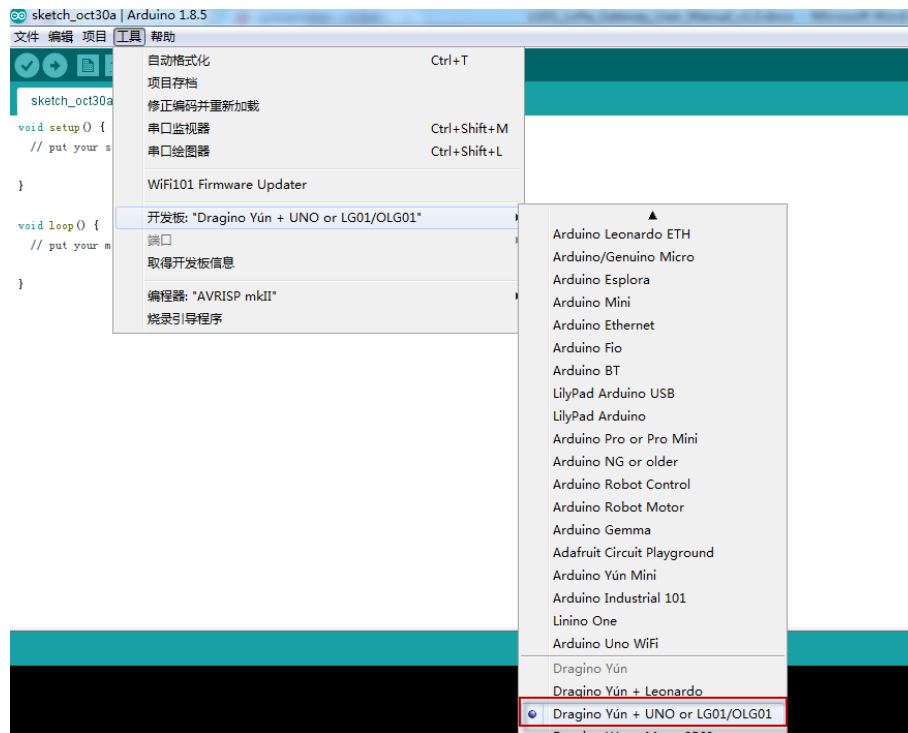
http://www.dragino.com/downloads/downloads/YunShield/package_dragino_yun_test_index.json in the **Additional Boards Manager URLs**.



- Go to **tools --> Boards --> Boards Manager**, find Dragino boards info and install it.



- After install Dragino's board info in the IDE, we can see the boards info from the IDE, as below screenshot. For LG01, we should choose: **Dragino Yun-UNO or LG01/OLG01**.

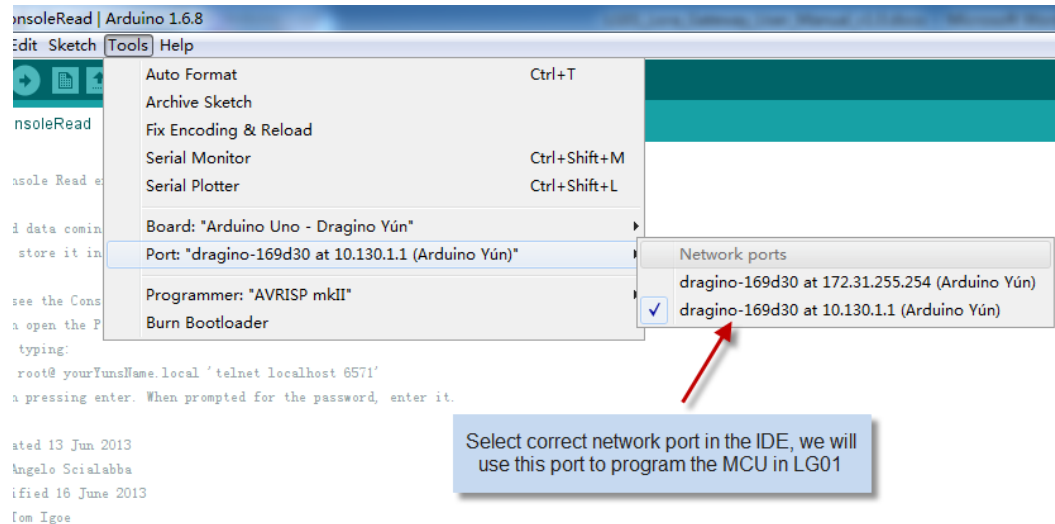


Note: If user has trouble to install via Board Manager. User can [manually add the board profile](#).

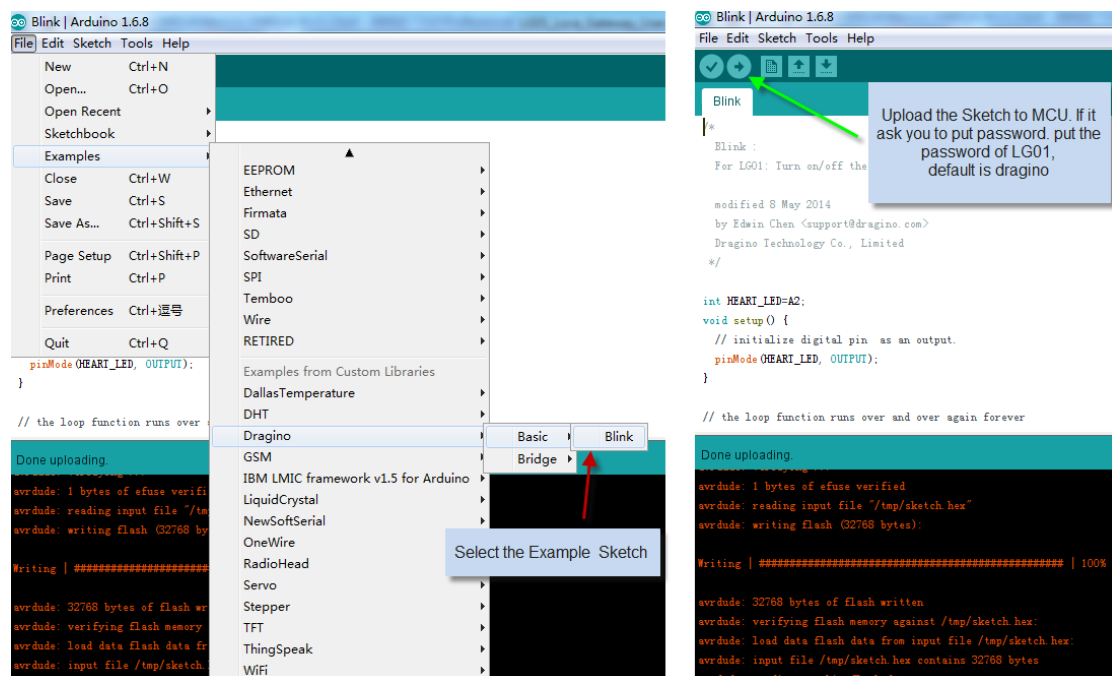
2.2.2 Upload a sketch in the MCU

For the very start, we can try to upload a simple sketch to the MCU and see how it works.

- Make sure your computer and the LG01 is in the same network, if you already connect to the LG01 WiFi SSID, then both devices are in the same WiFi network. In the IDE, select the correct port as below screenshot.



- Select the example from IDE --> File --> Examples --> Dragino --> Basic --> Blink
- Click Upload to upload the sketch to LG01, the LG01 may ask you password to upload, if so, type the password of LG01.



➤ Check result

The blink sketch will set the A2 pin of the MCU to periodically high and low. This pin connects to the **HEART LED** of the LG01. So if successfully upload this sketch, user can see the **HEART LED** turn on and turn off periodically.

2.3 Simple LoRa wireless example

To test LoRa wireless, we at least need 2 devices both support LoRa. In this example we will use below devices:

- ✓ LoRa Gateway: LG01 ;
- ✓ LoRa Client: LoRa Shield + Arduino Uno

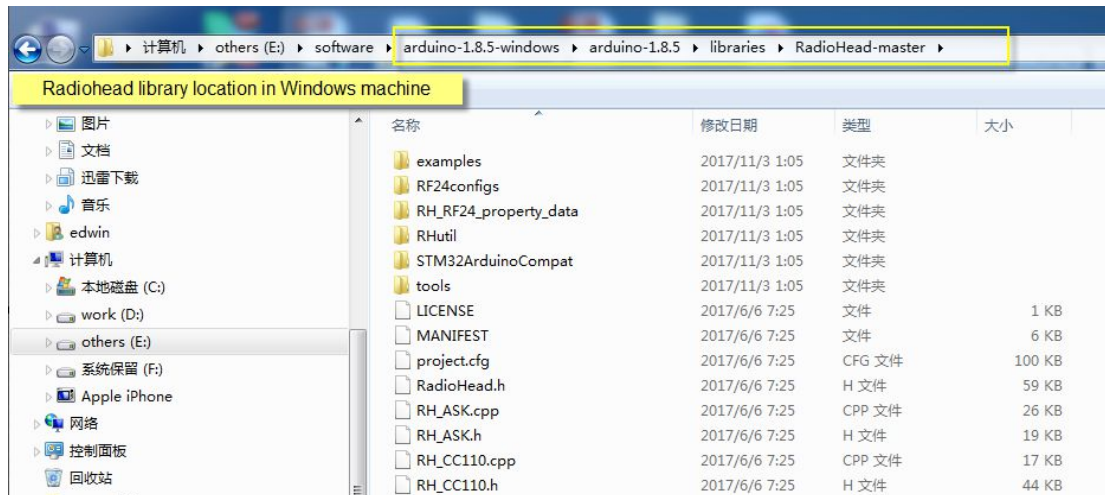


In this example, we will show the basic LoRa Communication: The LoRa Client will broadcast a data via LoRa wireless, the LG01 gateway will get this data and show the data in the PC.

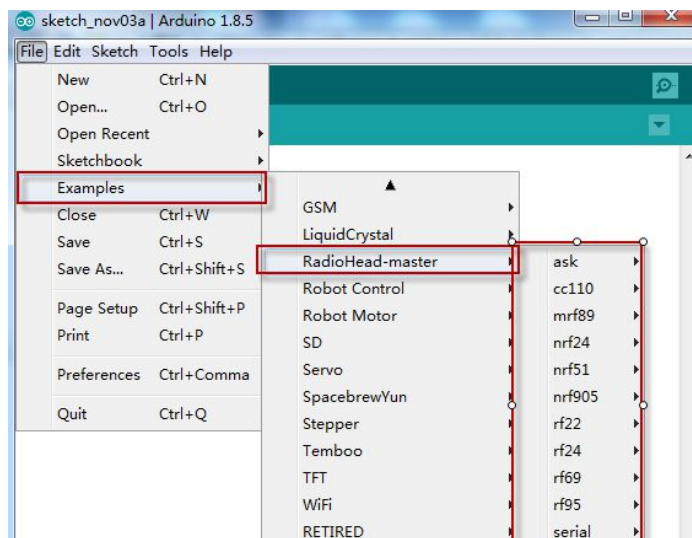
2.3.1 Installing LoRa Library

The Library used here for LoRa communication is called Radiohead; our sketch will use this library so we need to download it from:

<https://github.com/dragino/RadioHead/archive/master.zip>. Unzip and put it in the Arduino Library Folder, the final location looks as below:

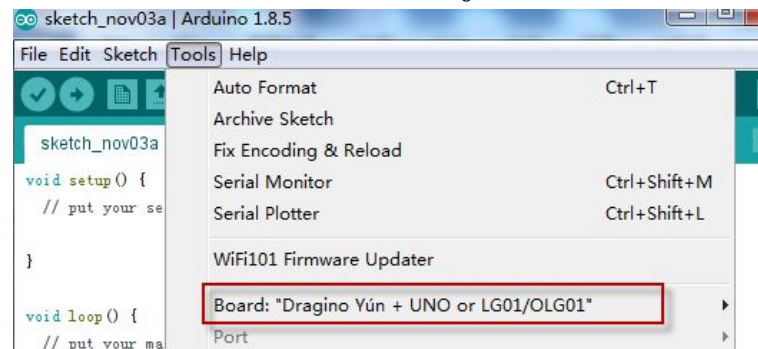


To make sure the library is installed corrected, we can restart the Arduino IDE and see if we can find it in the example code, as shown below:

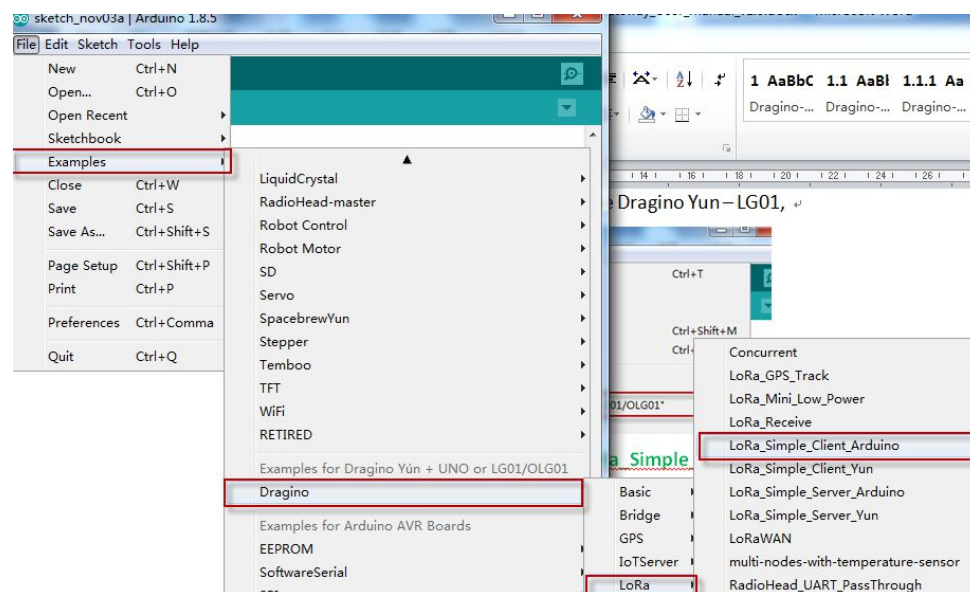


2.3.2 Upload Sketch to LoRa Client

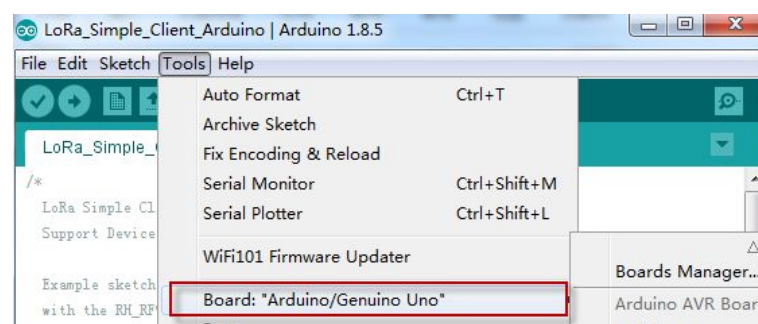
a) In the Arduino IDE, first choose Dragino Yun – LG01,



b) Then choose the example: [LoRa_Simple_Client_Arduino](#)



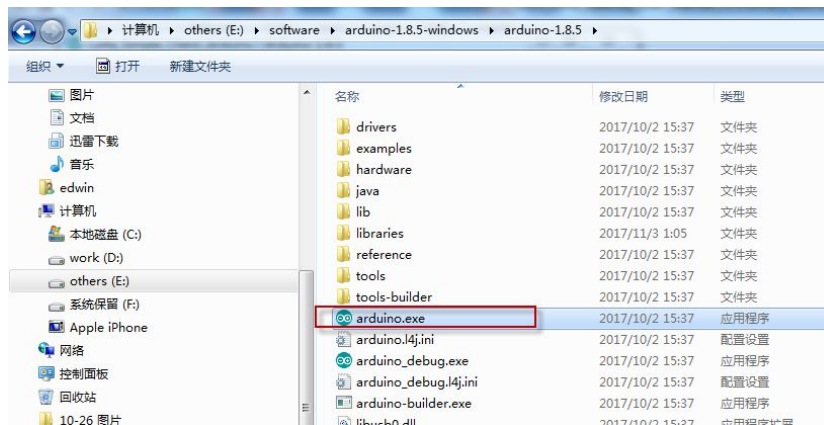
c) In the window of [LoRa_Simple_Client_Arduino](#), choose the board Arduino UNO which is the correct board for LoRa Shield + UNO:



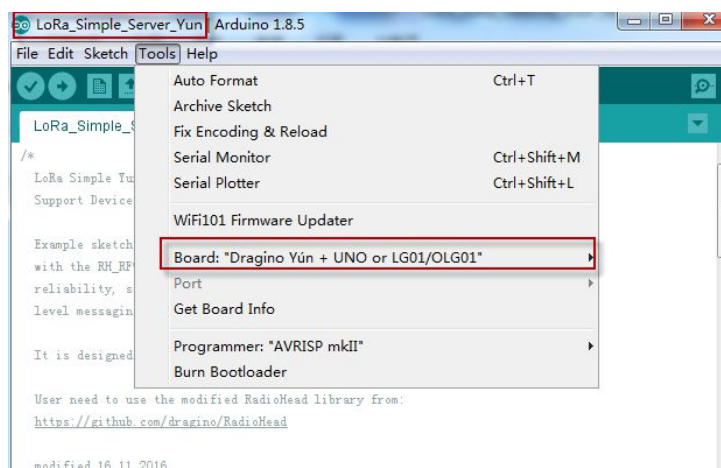
d) Upload the [LoRa_Simple_Client_Arduino](#) example sketch to LoRa Shield + UNO via the USB com port. And then open serial monitor to see the output.

2.3.3 Upload Sketch to LoRa Gateway LG01

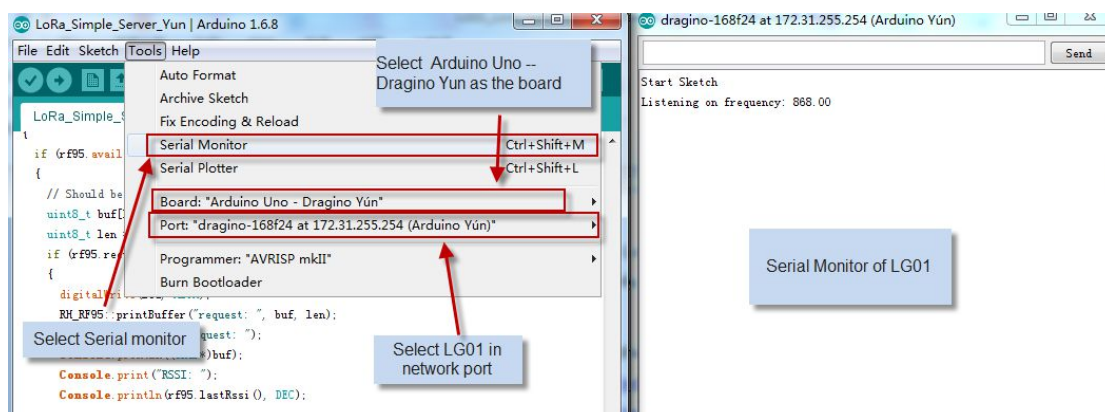
- a) Click the Arduino.exe to open another new instance. It is very important to open a new instance so we can two serial monitor, one for LoRa Client and one for LG01.



- b) In this new instance, Select LG01 board in Arduino IDE and choose the example LoRa_Simple_Server_Yun



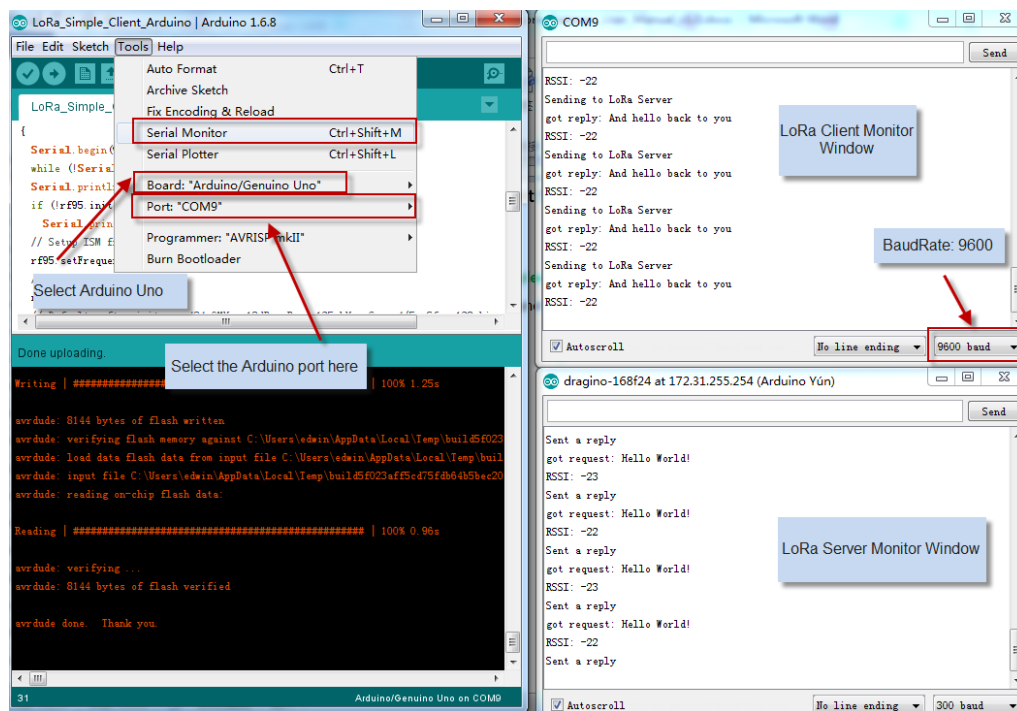
- c) Upload this Sketch to the LG01, then open the serial monitor to monitor the LG01 status.



2.3.4 Analyze Test Result

Below screenshot shows the result of this example.

- ✓ The Upper window shows the LoRa Client keep sending the LoRa packet out, and wait for the reply of this packet.
- ✓ The lower window is from LG01, which shows LG01 get a “Hello World” packet via LoRa, after LG01 get the “Hello World” packet, it will sent a broadcast LoRa packet “And hello back to you”, the LoRa Client will then receive it and print it on the serial monitor.



Notice: in the example code, the LoRa client will broadcast LoRa Packet once power on. But the LG01 will only receive the LoRa packet and response after the serial monitor of LG01 is opened, the reason is we have this code

`while (!Console) ; // Wait for console port to be available`

which mean the program will loop here until we open the serial monitor.

It is possible to use another LG01 as LoRa Client:

Method is same as above, but the example sketch is:

IDE --> File --> Examples --> Dragino --> LoRa --> LoRa_Simple_Client_Yun

3. Typical Network Setup

3.1 Overview

LG01 support flexible network set up for different environment. This section describes the typical network topology can be set in LG01. The typical network set up includes:

- ✓ WAN Port Internet Mode
- ✓ WiFi Client Mode
- ✓ WiFi AP Mode
- ✓ Mesh WiFi Network
- ✓ USB Dial Up Mode
- ✓ USB Ethernet Mode

Before setting network parameters, user can set up the Display Net Connection under [Web --> Network --> Internet Access](#) for easily checking network status. LG01 will check the network connection to the host and show the status in **GLOBAL LED**. The **GLOBAL LED** will blink if LG01 has network connection to that host.

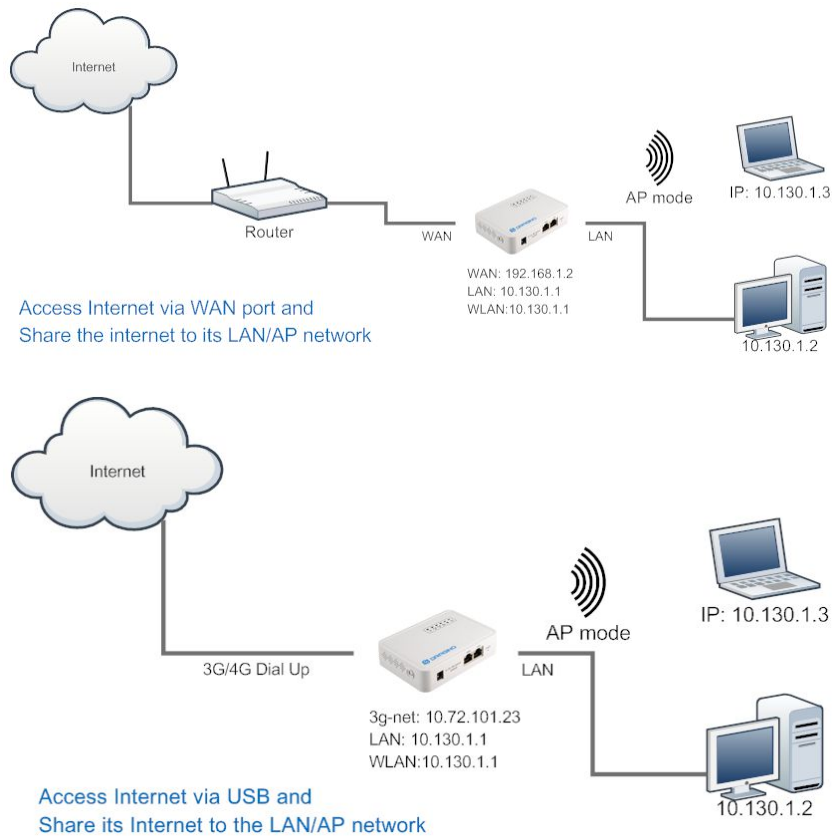


The screenshot shows the Dragino web interface with a blue header bar containing the username 'dragino2-3ccaef' and navigation links: Status, System, Sensor, Network, and Logout. Below the header, there are input fields for 'Gateway' and 'DNS Server' (with placeholder text 'DNS server domain or IP'). A red rectangular box highlights the 'Display Net Connection' section, which contains a text input field with 'www.163.com', a button labeled 'Continusely Check Net Connection' with a circular refresh icon, and a blue button labeled 'Check Connection to Specify Host and display via SYS LED'.

The network settings are under the network section, in the follow section of this chapter, we will show how to configure the LG01 for typically network usage.

3.2 General WiFi AP Network

In the General AP Mode, LG01 gets internet access from its WAN port or USB 3G/4G/GPRS. LG01 itself acts as a WiFi Access Point and provide a WiFi AP network. LG01 shares the internet to its AP network or LAN interface. Diagram is as below:



Set Up in Web UI for General WiFi AP mode

Network --> Internet Access:

- ✓ Access Internet via WAN PORT or USB Modem

Network --> LAN and DHCP

- ✓ Enable DHCP server in its LAN port

Network --> Access Point

- ✓ Enable WiFi AP
- ✓ Input SSID/ Encryption/ Passphrase

Network --> Mesh Network:

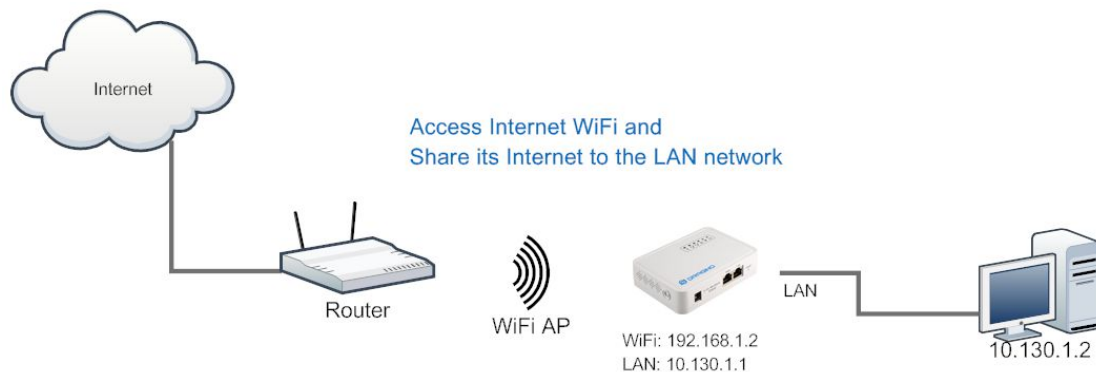
- ✓ Disable WiFi Mesh Network

3.3 WAN Port Internet Mode

The LG01 will use WAN port for internet connection. When connect LG01's WAN port to router, LG01 will get IP from router and have internet access. This is the default setting. It also shares the internet to its LAN port and WiFi AP network for other devices.

3.4 WiFi Client Mode

In the WiFi Client Mode, Dragino acts as a WiFi client and gets DHCP from uplink router via WiFi. It also shares the internet to its LAN port for other devices.



Set Up in Web UI

[Network --> Internet Access:](#)

- ✓ Access Internet via WiFi Client
- ✓ Way to Get IP: DHCP
- ✓ Input correct SSID, Password and Encryption.

[Network --> LAN and DHCP](#)

- ✓ Enable DHCP server in its LAN port

[Network --> Access Point](#)

- ✓ Disable WiFi AP

[Network --> Mesh Network](#)

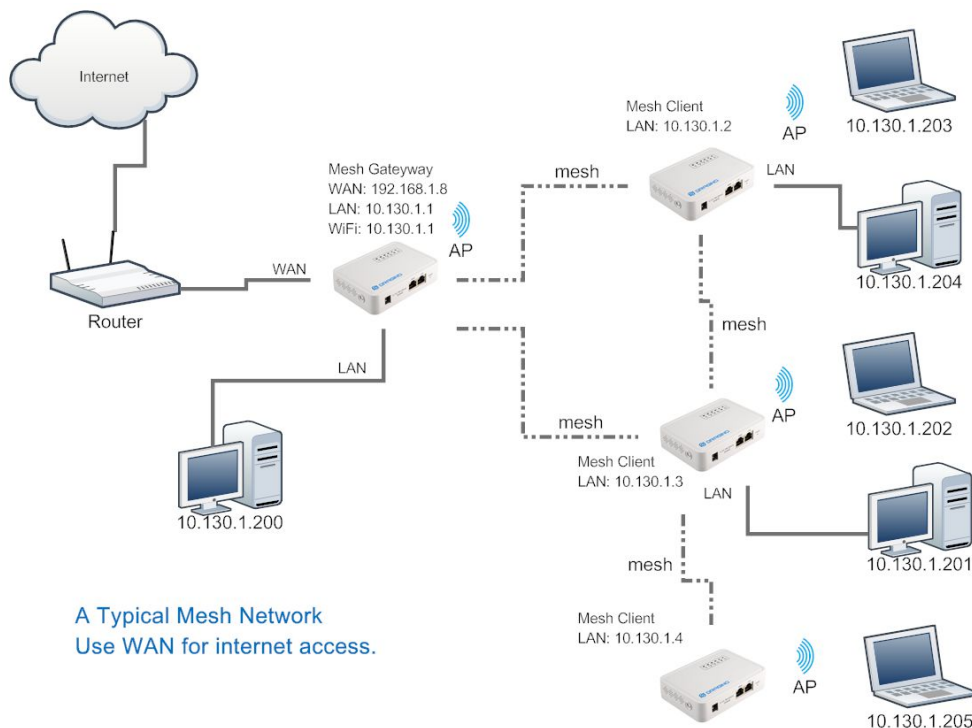
- ✓ Disable WiFi Mesh Network

3.5 Mesh WiFi Network

In the mesh network topology, user should choose the device to be a mesh gateway node or mesh client node

Mesh Gateway: use WAN port or USB 3G/4G modem to get internet access from uplink router. It also shares the internet to its Mesh Network for other Mesh Clients. The Mesh Gateway also acts as a DHCP router for its mesh network.

Mesh Client: Connects to the Mesh Gateway via mesh network, it also bridge internet via the LAN and WiFi AP interface.



3.5.1 Mesh Gateway Set Up

Network --> Internet Access

Access Internet via WAN PORT or USB Modem

dragino2-3ccaef
Status ▾ System ▾ Sensor ▾ Network ▾ Logout

Small Enterprise-Campus Network

Internet Access

Access Internet Via WAN Port ▾

Way to Get IP DHCP ▾

Display Net Connection www.163.com

☒ Continuously Check Net Connection

✓ Select Internet Connection Method for mesh gateway

Network --> LAN and DHCP

dragino2-4dffbf
Status
System
Sensor
Network
Logout

Small Enterprise-Campus Network

LAN and DHCP
Gateway Node Settings

IP Address
10.130.1.1

Enable DHCP
☒
Enable DHCP Server

Authoritative
☐
Enable DHCP Authoritative

LAN Gateway
255.255.255.255

Subnet Mask
255.255.255.0

DHCP Start IP
10.130.1.200

IP Address for its LAN and AP interface.

Enable DHCP Server

Packets from LAN port and WiFi Interface (AP and Mesh) will be forward to its WAN interface

- ✓ Enable DHCP server in its LAN port
- ✓ Set Gateway to 255.255.255.255

Network --> Access Point

- ✓ Enable WiFi AP (not necessary), Can set same SSID in the mesh network

Small Enterprise-Campus Network

Access Point

Enable WiFi AP
☒
Enable WiFi AP

Station ID
Dragino2-3ccaef

Encryption
WPA2

Passphrase

Channel
Channel 6

AP Connections
30

Network --> Mesh Network

- ✓ Enable WiFi Mesh Network
- ✓ Input Mesh Group //Note: Mesh Device within same group can communicate with each other. Mesh Group is a translation for BSSID for easy configure and remember.

dragino-169d30
Status
Sensor
System
Network
Logout

Small Enterprise-Campus Network

Mesh Setting

Mesh devices with the same group ID and AP wifi channel can communicate with each other

Enable Mesh
☒
Enable Mesh Network

Group ID
10000

Input a number between 1 ~ 1099511627775

Mesh Gateway

Gateway Mode
OFF

Mesh Client Set Up

Network --> Internet Access

- ✓ Access Internet set to Disable

dragino2-f531b1
Status ▾
System ▾
Sensor ▾
Network ▾
Logout

Small Enterprise-Campus Network

Internet Access

Access Internet Via
Disable ▾

Disable its WAN access, so packets will pass to Mesh Interface.

Display Net Connection

Domain or IP

☒ Continuously Check Net Connection

Network --> LAN and DHCP

- ✓ Disable DHCP server in its LAN port and
- ✓ Set gateway point to mesh gateway.

dragino2-f531b1
Status ▾
System ▾
Sensor ▾
Network ▾
Logout

Small Enterprise-Campus Network

LAN and DHCP

IP Address
10.130.1.2

Set a unique IP address for its LAN and WiFi interface.

Enable DHCP
☐
☒ Enable DHCP Server

Disable DHCP server in this device.

LAN Gateway
10.130.1.1

Use the Gateway Node as Default Gateway

Enable Fallback IP
☒
☒ Fallback IP is permanent IP in LAN port, active after reboot

Network --> Access Point

- ✓ Enable WiFi AP (not necessary, can use same SSID or difference SSID with other mesh node)

dragino2-b170b1
Network

No password set!
There is no password set on this router. Please configure a root password to protect the web interface and Go to password configuration...

Small Enterprise-Campus Network

Access Point

Enable WiFi AP ☒ [? Enable WiFi AP](#)

Station ID

Encryption

Passphrase [? !\[\]\(5ee7b0a6e13dddf975c74ce12294f7c3_img.jpg\)](#)

CAN/US Reg ☒

Channel

Network --> Mesh Network

- ✓ Enable WiFi Mesh Network
- ✓ Input Mesh Group //Note: Mesh Device within same group can communicate with each other. Mesh Group is a translation for BSSID for easy configure and remember.

dragino-169d30
Status ▾
Sensor ▾
System ▾
Network ▾
Logout

Small Enterprise-Campus Network

Mesh Setting

Mesh devices with the same group ID and AP wifi channel can communicate with each other

Enable Mesh ☒ [? Enable Mesh Network](#)

Group ID

[? Input a number between 1 ~ 1099511627775](#)

Mesh Gateway

Gateway Mode

3.6 USB Dial Up Modem Set Up

Dragino USB interface can be used for GPRS/3G/4G connections. Below are some set up examples.

Note: if user use EC20/UC20 module, he just need to choose USB modem in the internet setting and reboot the device. the device will auto configure to support these modules.

[WCDMA set up example:](#)

dragino2-3ccaef
Network -

USB Modem Setting

USB Modem	Manufacturer:HUAWEI Technology, Vendor ID:12d1, Product ID:1436	Auto Detect USB Devices
Modem Status	inet addr:10.72.101.23 P-t-P:10.64.64.64 Mask:255.255.255.255	Connection Status
Available USB Port	/dev/ttyUSB1 /dev/ttyUSB2 /dev/ttyUSB3 /dev/ttyUSB4 A modem is always detected to have several USB port for different features	
USB Modem Service	UMTS	3G WCDMA
VID	12d1	Vendor ID as shown in USB info section
PID	1436	Product ID as shown in USB info section
Service APN	3gnet	Service APN. 3gnet is for China Unicom
Dial String	*99#	Dial String, Default *99#
Username		Leave blank if no provided by your provider
Password		Leave blank if no provided by your provider
PIN		Leave blank if no provided by your provider
USB Serial Port	ttyUSB1	The USB port of your dongle used for Dial Up.

[3G EV-DO/CDMA2000 Set Up Example for China Telecom:](#)

USB Modem Setting

3G EV-DO dial up example:
Provider: China Telecom 3G
USB Dongle: ZTE AC582

USB Modem Manufacturer:ZTE, Vendor ID:19d2, Product ID:0152

Modem Status

Available USB Port /dev/ttyUSB0 /dev/ttyUSB1 /dev/ttyUSB2 /dev/ttyUSB3 /dev/ttyUSB4

USB Modem Service EV-DO Choose EV-DO

VID 19d2 Input USB dongle VID

PID 0152 Input USB dongle PID

Service APN

Dial String #777 Dial String for Chinatelecom

Username ctnet@mycdma.cn User Name

Password Password

PIN

USB Serial Port ttyUSB0 Choose USB Serial Port for 3G

Save & Apply

3.7 USB 3G/4G Ethernet Dongle

Some USB dongles are not using the dial up to connect internet. Instead, they appear as a network interface and has built-in router feature. Huawei Hilink dongles are a typical of these. When user plug such dongle into computer, it will auto connect to Internet and redirect to a web interface, when plug such dongle into the MS14, a new interface will appear (typically eth2eth2 or usb0) by running command "ifconfig -a"

User can use the Web UI to configure use these dongle for internet connection directly.

```

172.31.255.254 - SecureCRT
文件(F) 编辑(E) 查看(V) 选项(O) 传输(T) 脚本(S) 工具(L) 帮助(H)
173.236.176.38-dreamhost | 172.31.255.254
collisions:0 txqueuelen:1000
RX bytes:138038 (134.8 KiB) TX bytes:490130 (478.6 KiB)
Interrupt:5

eth1    Link encap:Ethernet  Hwaddr A8:40:41:14:31:E6
        BROADCAST MULTICAST  MTU:1500  Metric:1
        RX packets:0 errors:0 dropped:0 overruns:0 frame:0
        TX packets:0 errors:0 dropped:0 overruns:0 carrier:0
        collisions:0 txqueuelen:1000
        RX bytes:0 (0.0 B)  TX bytes:0 (0.0 B)
        Interrupt:4

eth2    Link encap:Ethernet  Hwaddr 58:2C:80:13:92:63
        inet addr:192.168.1.100  Bcast:192.168.1.255  Mask:255.255.255.0
        inet6 addr: fe80::5a2c:80ff:fe13:9263/64  Scope:Link
        UP BROADCAST RUNNING MULTICAST  MTU:1500  Metric:1
        RX packets:331 errors:0 dropped:0 overruns:0 frame:0
        TX packets:325 errors:0 dropped:0 overruns:0 carrier:0
        collisions:0 txqueuelen:1000
        RX bytes:32990 (32.2 KiB)  TX bytes:26875 (26.2 KiB)

lo      Link encap:Local Loopback
        inet addr:127.0.0.1  Mask:255.0.0.0
        inet6 addr: ::1/128  Scope:Host
        UP LOOPBACK RUNNING  MTU:65536  Metric:1
        RX packets:134 errors:0 dropped:0 overruns:0 frame:0

```

new interface
from USB
modem

a new interface generate by USB Ethernet modem



dragino-1431e4 Status System Network Logout

Small Enterprise-Campus Network

Internet Access

Access Internet Via: USB Ethernet Modem Use USB Ethernet Modem for network connection

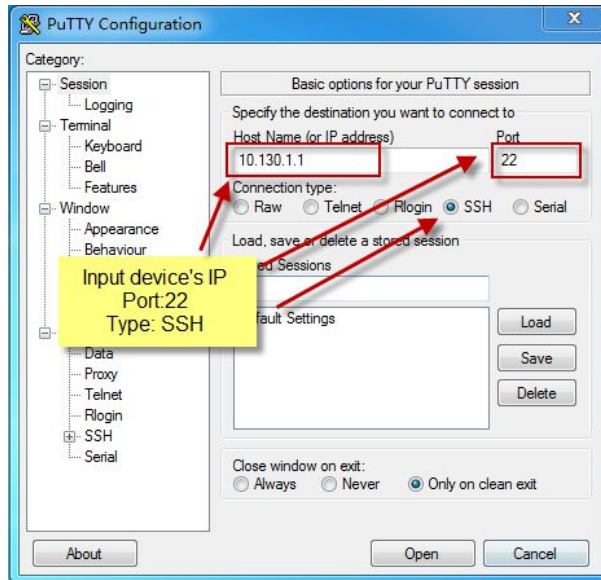
USB Ethernet Interface: eth2 input the USB Ethernet Interface

4. Linux System

The LG01 bases on OpenWrt Linux System. It is open source, and user are free to configure and modify the inside Linux settings.

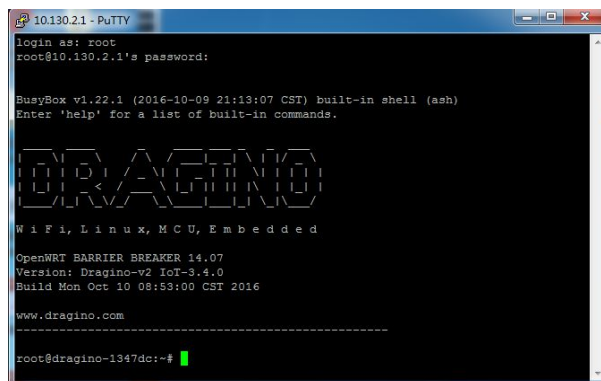
4.1 SSH Access for Linux console

User can access to the Linux console via SSH protocol. Make sure your PC and the LG01 is in the same network, then use a SSH tool (such as [putty](#)) to access it. Below are screenshots:



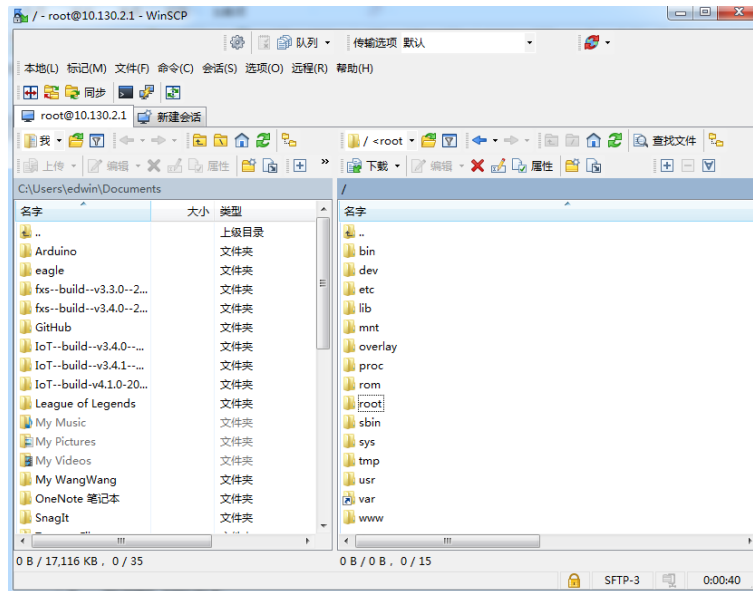
IP address: IP address of LG01
 Port: 22
 User Name: root
 Password: dragino (default)

After log in, you will be in the Linux console and type command here.



4.2 Edit and Transfer files

The LG01 support [SCP protocol](#) and has a built [SFTP server](#). There are many ways to edit and transfer files using these two protocols. One of the easiest is through [WinSCP](#) utility. After access via WinSCP to the device, use can use a FTP alike window to drag / drop files to the LG01 or Edit the files directly in the windows. Screenshot is as below:



4.3 File System

The LG01 has a 16MB flash and a 64MB RAM. The /var and /tmp directory are in the RAM, that means content in /tmp and /var will be erase after reboot the device. Other directories are in the flash and will keep after reboot.

The Linux system use around 8MB ~10MB flash size which means there is not much room for user to store data in the LG01 flash. User can use an external USB flash to extend the size for storage.

4.4 Package maintain system

LG01 uses [OPKG package maintain system](#). There are more than 3000+ packages available in our package server for user to install for their applications. For example, if user wants to add MQTT support, they can install the related packages and configure LG01 to support MQTT

Below is some examples opkg command, more please refer [OPKG package maintain system](#)

In Linux Console run:

```
root@dragino-169d30:~# opkg update // to get the latest packages list
```

```
root@dragino-169d30:~# opkg list //shows the available packages
```

```
root@dragino-169d30:~# opkg install mosquitto-client // install MQTT client, it will auto install the required packages.
```

```
Installing mosquitto-client (1.3.5-1) to root...
```

```
Downloading
```

```
http://downloads.openwrt.org/barrier_breaker/14.07/ar71xx/generic/packages/packages/mosquitto-client_1.3.5-1_ar71xx.ipk.
```

```
Installing libcares (1.10.0-1) to root...
```

```
Downloading
```

```
http://downloads.openwrt.org/barrier_breaker/14.07/ar71xx/generic/packages/packages/libcares_1.10.0-1_ar71xx.ipk.
```

```
Installing libmosquitto (1.3.5-1) to root...
```

```
Downloading
```

```
http://downloads.openwrt.org/barrier_breaker/14.07/ar71xx/generic/packages/packages/libmosquitto_1.3.5-1_ar71xx.ipk.
```

```
Configuring libcares.
```

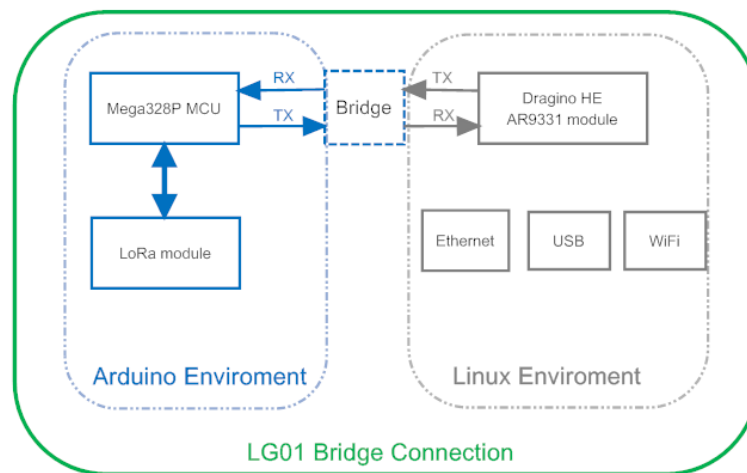
```
Configuring libmosquitto.
```

```
Configuring mosquitto-client.
```

5. Bridge Library

The bridge library is the most important part of LG01. Bridge library defines a mechanism how the MCU talk to the CPU (ar9331). With the bridge library, the MCU can send data to CPU, get commands result from CPU or call commands in CPU.

The bridge Library use UART port to communicate between MCU and ar9331. Below is the block diagram shows the bridge connection between the Mega328P MCU and Linux.

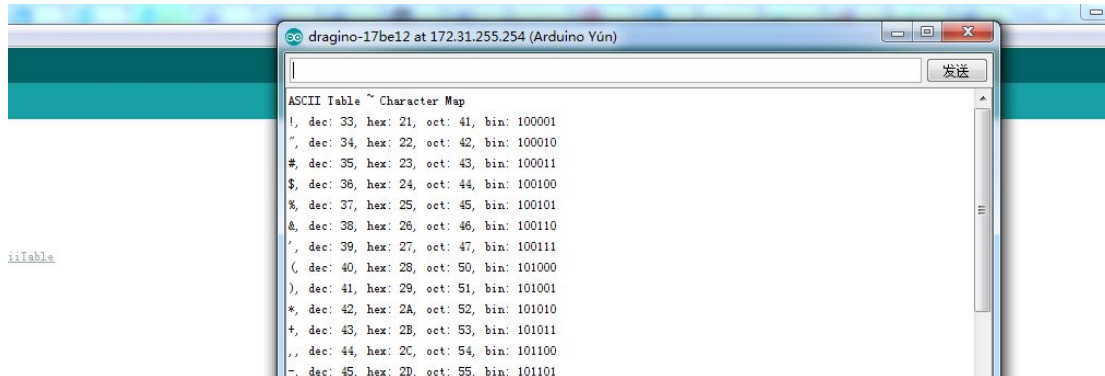


Detail instruction of how to use the bridge library can be found in [Arduino Bridge Library](#). Due to hardware difference, there are some points when we read and use the Bridge Examples from Arduino site:

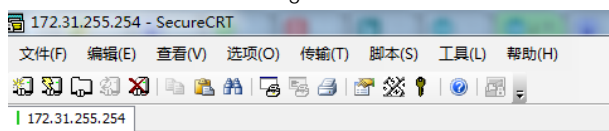
- We recommend user to try the examples under [Arduino IDE --> Files --> Examples --> Dragino](#) first.
- When use the Bridge class, user need to call `Bridge.begin(115200)` in the sketch for LG01.
- In the default bridge examples from Arudino IDE, it uses Serial class to print debug info. This doesn't work in LG01. Because the [Serial Class](#) will call Mega328P's hardware serial port , it will be conflict with the Bridge Library. If user needs to print debug info, please use the console class.

5.1 The Use of Console

Console Class in Arduino is a good way to output debug info to computer. The [Arduino IDE --> Files --> Examples --> Dragino-->Bridge-->ConsoleRead](#) shows how to use this class to print data to Arduino IDE's Serial Monitor. as below



User can also don't use the Serial Monitor , instead, user can [use SSH to log in LG01](#) and run [telnet localhost 6571](#) to get the Console result, as below:



BusyBox v1.23.2 (2017-06-24 23:34:27 CST) built-in shell (ash)

DRAGINO

w i f i , L i n u x , M C U , E m b e d d e d

OpenWRT Chaos Calmer 15.05
Version: Dragino-v2 IoT-4.2.2
Build wed Jul 19 15:06:00 CST 2017

www.dragino.com

```
root@dragino-17be12:~# telnet localhost 6571
ASCII Table ~ Character Map
!, dec: 33, hex: 21, oct: 41, bin: 100001
", dec: 34, hex: 22, oct: 42, bin: 100010
#, dec: 35, hex: 23, oct: 43, bin: 100011
$, dec: 36, hex: 24, oct: 44, bin: 100100
%, dec: 37, hex: 25, oct: 45, bin: 100101
&, dec: 38, hex: 26, oct: 46, bin: 100110
', dec: 39, hex: 27, oct: 47, bin: 100111
(, dec: 40, hex: 28, oct: 50, bin: 101000
), dec: 41, hex: 29, oct: 51, bin: 101001
*, dec: 42, hex: 2A, oct: 52, bin: 101010
+, dec: 43, hex: 2B, oct: 53, bin: 101011
,, dec: 44, hex: 2C, oct: 54, bin: 101100
-, dec: 45, hex: 2D, oct: 55, bin: 101101
., dec: 46, hex: 2E, oct: 56, bin: 101110
```

6. Advance Management

6.1 Reset Network or Reset to Factory Default

LG01 provide ways for user to reset the device. When the Linux system is running, user can press the toggle button to reset the device. the pressing time will determine which part is to be reset.

- Pressing the toggle button, the **GLOBAL LED** will blink, release the button after 5 seconds, device will reset the network setting and reboot (GLOBAL/LAN/WAN/WiFi blink once), other settings will be kept.
- Pressing the toggle button, the **GLOBAL LED** will blink, release the button after 30 seconds, device will reset ALL the setting to factory default and reboot (GLOBAL/LAN/WAN/WiFi blink once) .

7. Upgrade Linux Firmware

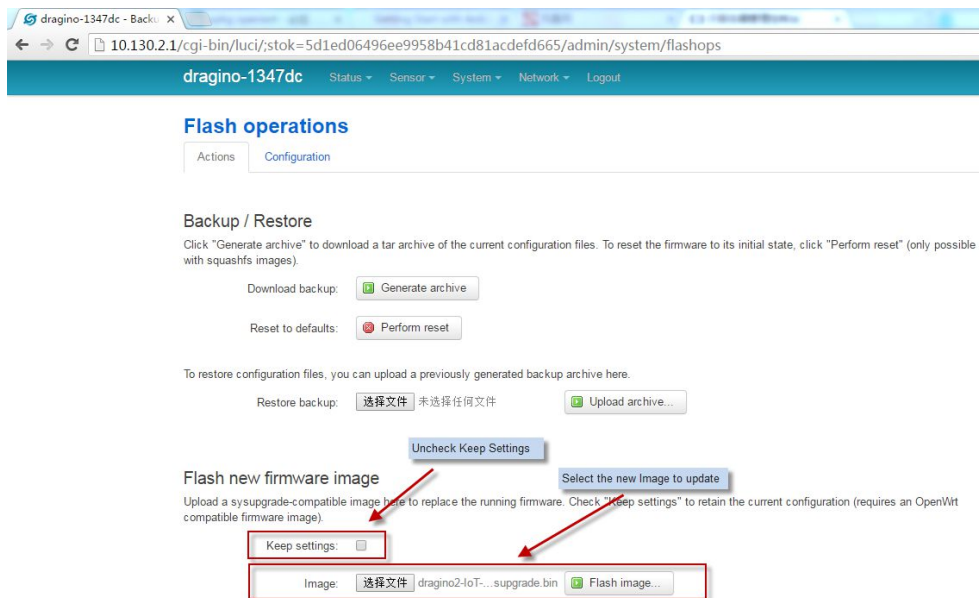
We keep improving the LG01 Linux side firmware for new features, bug fixes. The latest firmware can be found on [IoT Mesh Firmware](#), and the Change Log can be found here: [Firmware Change Log](#).

The file named as `dragino2-IoT--xxxxx-squashfs-sysupgrade.bin` is the upgrade Image. There are different method to upgrade, as below:

7.1 Upgrade via Web UI

Go to the page: **Web --> System --> Back Up and flash firmware**, Select the image and click Flash Image, the image will be uploaded to the device and then click Process Update to upgrade.

System will auto boot to the new firmware after upgrade.



7.2 Upgrade via Linux console

SCP the firmware to the system `/var` directory and then run

```
root@OpenWrt:~# /sbin/sysupgrade -n /var/Your_Image
```

note: it is important to transfer the image in the `/var` directory, otherwise it may exceed the flash size.

8. Upgrade Micro Controller Sketch

There are three ways for use to upgrade the sketch to the MCU use LG01.

8.1 Upgrade Sketch via Arduino IDE

We have already introduce this method in above, please see from [here](#)

8.2 Upgrade Sketch via Web UI

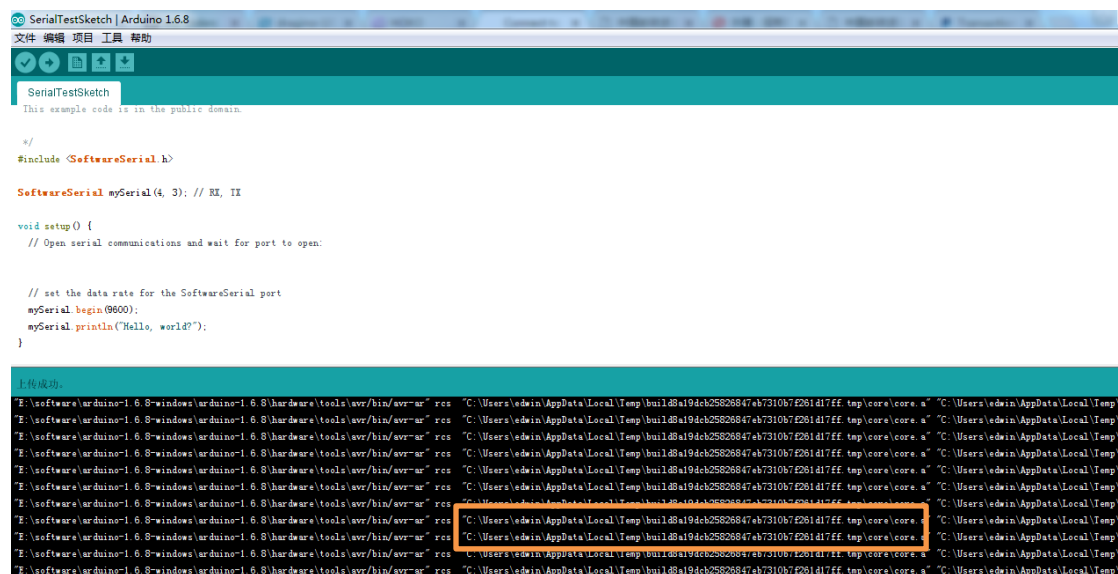
Upgrade Sketch via Web UI is a good way to distribute production sketch in hex format.

User can get the hex production file and below is the upgrade step:

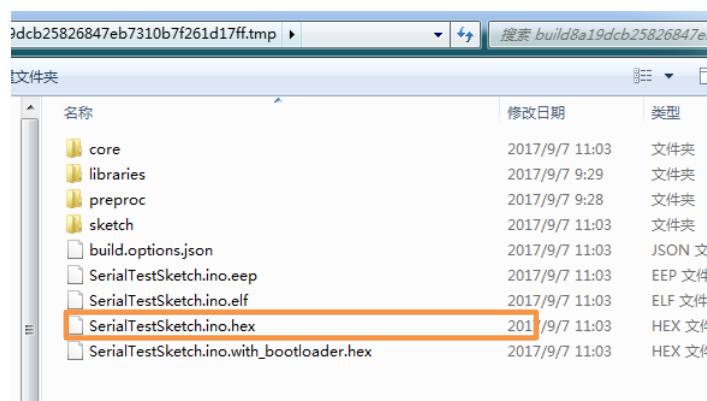
- In LG01, Go to page **Sensor --> Flash MCU** , Select the hex file and upload it to LG01.
- Reboot LG01, After reboot, check page **Sensor --> MicroController** , If the Sketch has defined the MCU version, you can see from this page and check if upgrade is correctly.

How to get the HEX file?

In the Arduino IDE, when compile the Sketch, User can see where the code is located as below:



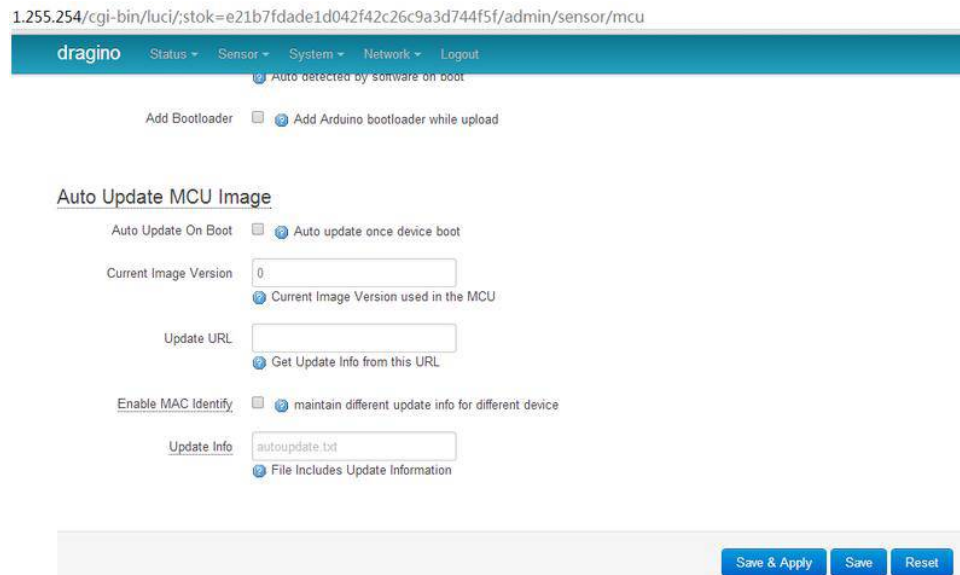
Then open the directory and get the hex file (DO NOT use the one with bootloader)



8.3 Auto update MCU

Since Firmware IoT-4.1.1, auto update sketch is supported. With this feature, the Dragino's will connect to a http/https server and get the latest sketch version and upload the sketch with this version. The purpose of this feature is to reduce the tech support cost / time for remote installation.

The feature can be configured in the page [sensors -> microcontroller](#).



1.255.254/cgi-bin/luci/stok=e21b7fdade1d042f42c26c9a3d744f5f/admin/sensor/mcu

dragino Status Sensor System Network Logout

Auto detected by software on boot

Add Bootloader Add Arduino bootloader while upload

Auto Update MCU Image

Auto Update On Boot ☒ Auto update once device boot

Current Image Version
 Current Image Version used in the MCU

Update URL
 Get Update Info from this URL

Enable MAC Identify ☐ maintain different update info for different device

Update Info
 File Includes Update Information

Save & Apply Save Reset

- **Auto Update On Boot:** While this option is enabled. Device will connect to the auto server on every boot and check if there is new version of Sketch to be update. If Device find newer version on the auto update server, device will download it from the server and update the mcu with this new version.
- **Current Image Version:** Shows the current sketch version. By default it is 0. Device will update this version to the latest version number only after auto update successful.
- **Update URL:** This URL contact the update information and the sketch.hex file. Device will connect to this URL to check if there is newer version in the server.
- **Update Info:** The text file includes the update information. An example for this file can be found here: [example for update information file](#). It should include:
 - image: the sketch used for auto update
 - md5sum: md5sum for this sketch.
 - version: the latest version number.
- **Enable MAC Identify:** Instead of getting update information as specified in **Update Info**, The device will look for the update information from the file: [wifi_mac.txt](#). Which means, if the device has wifi mac address A840417867AF, device will download the file: \$Update_URL/A840417867AF.txt for auto update information.

Procedure for Auto Update Sketch:

Assume we have below configured:

Auto Update On Boot: checked

Update URL: <http://www.dragino.com/downloads/downloads/tmp/autoupdate/>

Update Info: update_info

Enable MAC Identify: unchecked

After reboot, the device will do auto update as below:

1. Download the update information
from http://www.dragino.com/downloads/downloads/tmp/autoupdate/update_info
2. Compare the Latest version and the version on the device
3. If server has a higher version, Device will
download <http://www.dragino.com/downloads/downloads/tmp/autoupdate/sketch.hex>
4. Do a md5sum check to verify the downloaded sketch is fine
5. Update the MCU with the newer version sketch
6. Update the version number to the latest version number

9. Example: Integrate LoRa with RESTful API

9.1 What is RESTful API?

A RESTful API is an application program interface (API) that uses HTTP requests to GET, PUT, POST and DELETE data.

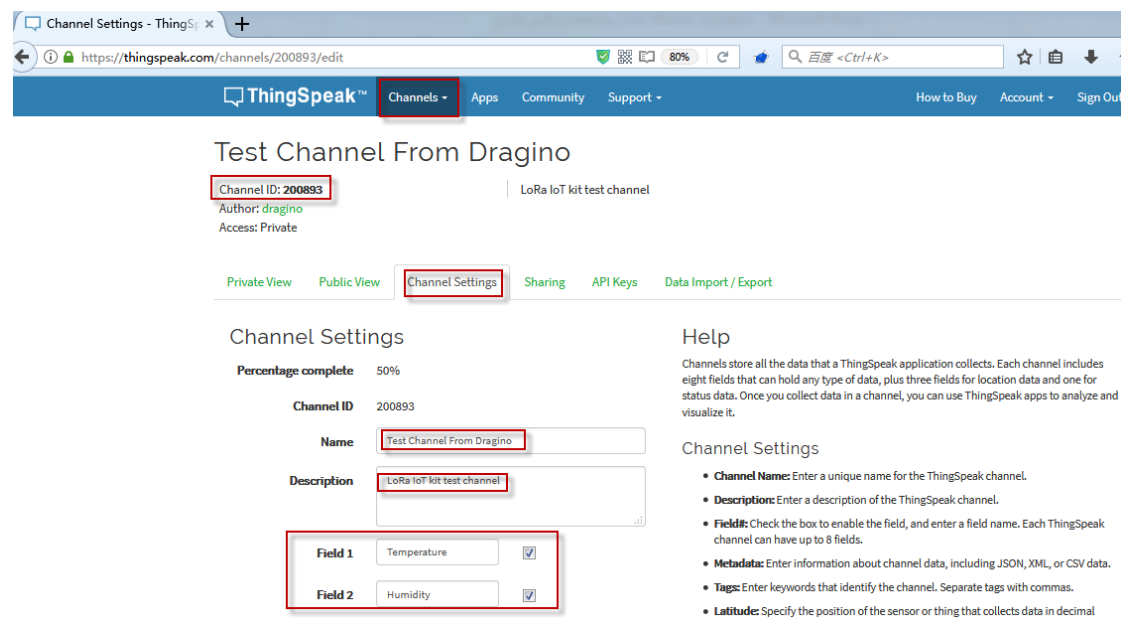
Many IoT services provide RESTful API as one of the uplink/downlink method for sensor data communication.

This example will show how to use LG01 to communicate with IoT server via RESTful API, so to achieve the goal to upload sensor data to IoT server or download commands from IoT server.

9.2 Configure IoT Server

Many servers support RESTful API, the server we use here is [ThingSpeak](https://thingspeak.com) which has an intuitive chart to show the test result for our test. The method here is general and can be used with other IoT servers for RESTful connection as well.

To use the server, we need to [register an account](#) on Thingspeak. Then [create a channel](#) and type the channel info. As shown below, the Channel ID is the unique ID to store our data in ThingSpeak.



Channel Settings - ThingSpeak

https://thingspeak.com/channels/200893/edit

ThingSpeak Channels Apps Community Support How to Buy Account Sign Out

Test Channel From Dragino

Channel ID: 200893 | LoRa IoT kit test channel

Author: dragino
Access: Private

Private View Public View **Channel Settings** Sharing API Keys Data Import / Export

Channel Settings

Percentage complete 50%

Channel ID 200893

Name Test Channel From Dragino

Description LoRa IoT kit test channel

Field 1 Temperature ☒

Field 2 Humidity ☒

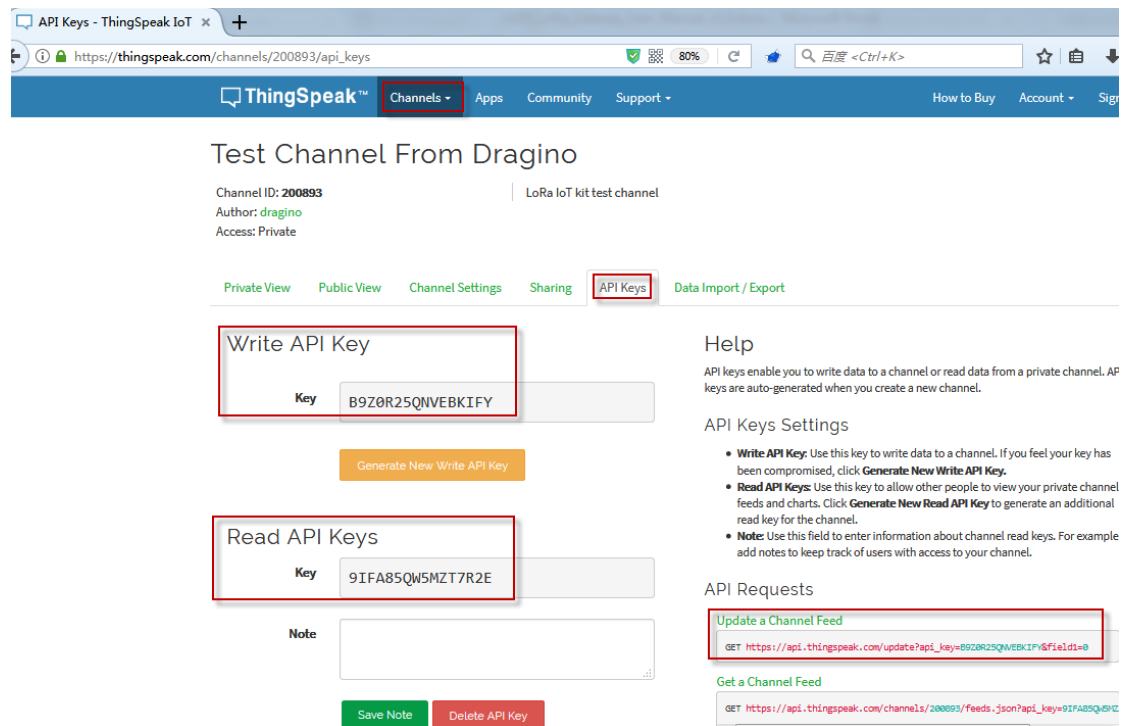
Help

Channels store all the data that a ThingSpeak application collects. Each channel includes eight fields that can hold any type of data, plus three fields for location data and one for status data. Once you collect data in a channel, you can use ThingSpeak apps to analyze and visualize it.

Channel Settings

- Channel Name:** Enter a unique name for the ThingSpeak channel.
- Description:** Enter a description of the ThingSpeak channel.
- Fields:** Check the box to enable the field, and enter a field name. Each ThingSpeak channel can have up to 8 fields.
- Metadata:** Enter information about channel data, including JSON, XML, or CSV data.
- Tags:** Enter keywords that identify the channel. Separate tags with commas.
- Latitude:** Specify the position of the sensor or thing that collects data in decimal

To let the LG01 communicate with the channel, we also need the API keys and API method. In ThingSpeak, we can find API keys and API call method in API Keys page:



API Keys - ThingSpeak IoT

Channels Apps Community Support

How to Buy Account Sign

Test Channel From Dragino

Channel ID: 200893 | LoRa IoT kit test channel

Author: dragino

Access: Private

Private View Public View Channel Settings Sharing API Keys Data Import / Export

Write API Key

Key: B9Z0R25QNVEBKIFY

Generate New Write API Key

Read API Key

Key: 91FA85QW5M2T7R2E

Note

Save Note Delete API Key

Help

API keys enable you to write data to a channel or read data from a private channel. API keys are auto-generated when you create a new channel.

API Keys Settings

- Write API Key:** Use this key to write data to a channel. If you feel your key has been compromised, click **Generate New Write API Key**.
- Read API Key:** Use this key to allow other people to view your private channel feeds and charts. Click **Generate New Read API Key** to generate an additional read key for the channel.
- Note:** Use this field to enter information about channel read keys. For example add notes to keep track of users with access to your channel.

API Requests

Update a Channel Feed

GET https://api.thingspeak.com/update?api_key=B9Z0R25QNVEBKIFY&field1=0

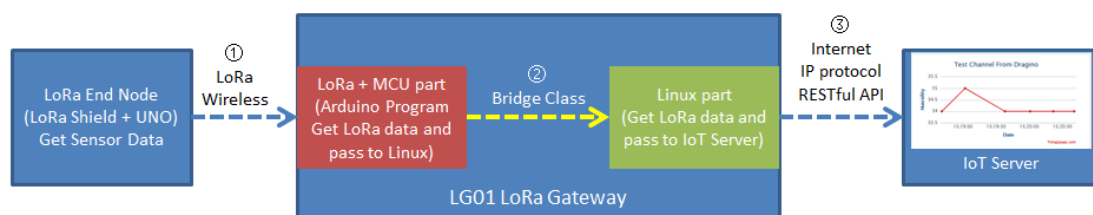
Get a Channel Feed

GET https://api.thingspeak.com/channels/200893/feeds.json?api_key=91FA85QW5M2T7R2E

9.3 Step by Step Uplink Test

In this section, we will try to program LG01 to uplink data to ThingSpeak. The data flow in this example is as below:

LoRa to RESTful Integration: Uplink Data Flow to ThingSpeak



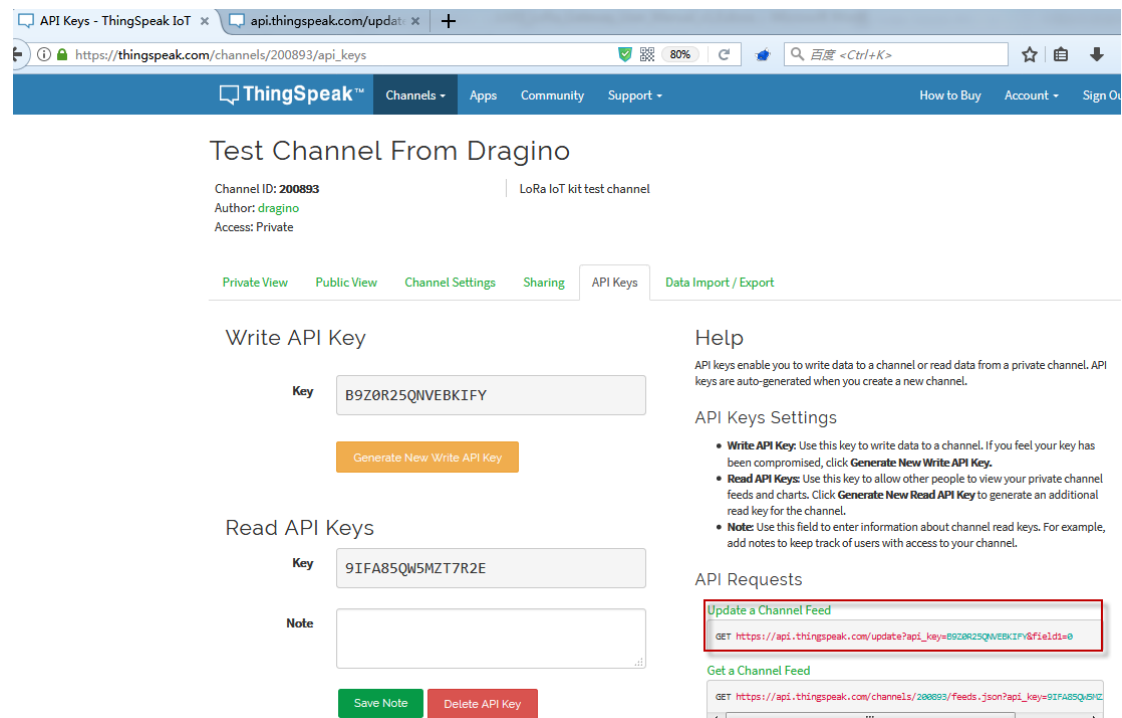
Data Flow:

- ①: LoRa end node get data from sensor and send out via LoRa wireless protocol
- ②: LoRa/MCU part in LG01 get the sensor data from LoRa wireless. and pass the data to Linux side
- ③: Linux part in LG01 send the sensor data to IoT server in RESTful API format.

We have already tried ① and ② in the above simple LoRa example. Now we will try the step ③ first, after it work as expect, we will integrate these three steps together for a complete uplink example.

9.3.1 Try RESTful API call in web

We can see the API from ThingSpeak page as below:



Test Channel From Dragino

Channel ID: 200893 | LoRa IoT kit test channel

Author: dragino

Access: Private

Private View Public View Channel Settings Sharing API Keys Data Import / Export

Write API Key

Key: B9Z0R25QNVEBKIFY

Generate New Write API Key

Read API Keys

Key: 9IFA85QW5M2T7R2E

Note:

Save Note Delete API Key

Help

API keys enable you to write data to a channel or read data from a private channel. API keys are auto-generated when you create a new channel.

API Keys Settings

- Write API Key:** Use this key to write data to a channel. If you feel your key has been compromised, click **Generate New Write API Key**.
- Read API Keys:** Use this key to allow other people to view your private channel feeds and charts. Click **Generate New Read API Key** to generate an additional read key for the channel.
- Note:** Use this field to enter information about channel read keys. For example, add notes to keep track of users with access to your channel.

API Requests

Update a Channel Feed

GET https://api.thingspeak.com/update?api_key=B9Z0R25QNVEBKIFY&field1=0

Get a Channel Feed

GET https://api.thingspeak.com/channels/200893/feeds.json?api_key=9IFA85QW5M2T7R2E

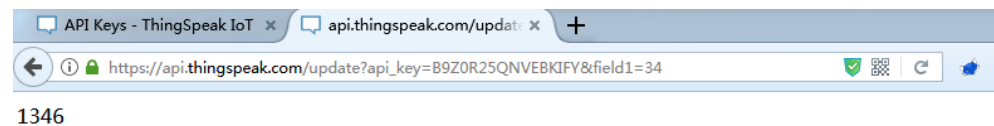
As above, the API call to update a channel feed is as below:

GET https://api.thingspeak.com/update?api_key=B9Z0R25QNVEBKIFY&field1=0

In above API call, there are three variables:

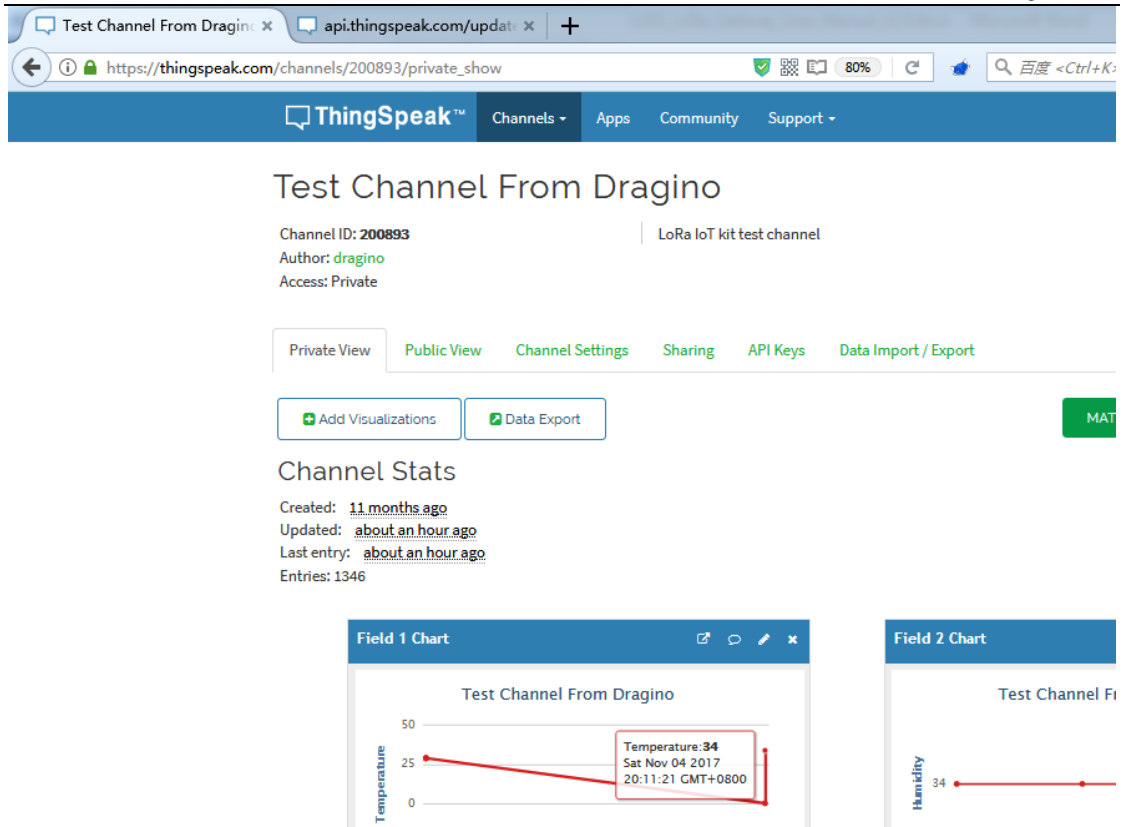
- ✓ **api_key:** Define on which channel you will upload the data.
- ✓ **Field:** Each channel have max 8 fields, Field1 , Field2 define which exactly field to be updated
- ✓ **Value:** Field1=0, means update the Field1 with value 0.

To test this API call, we can simply put the URL in web browser and test. For example, below shows the action to set the field1 data to 34, and we can see the result immediately in the private view.



1346

Result is as below:



So we have tested that the RESTful API calls works as the document they provide, next step we will try in LG01 to use this API call.

Note: RESTful API is a design style, not a standard. Different servers may have different RESTful call format. Some format can't be executed in web browser. Developer should follow the documents provided by the IoT server. POSTMAN is very powerful tool for debug the RESTful API.

9.3.2 Try RESTful API call with LG01 Linux command

First, we need to make sure the LG01 has internet access. We can log in the SSH and ping an Internet address and see if it get through. As below:

```
172.31.255.254 - SecureCRT
文件(F) 编辑(E) 查看(V) 选项(O) 传输(T) 脚本(S) 工具(L) 帮助(H)
Aliyun_美国服务器 | 172.31.255.254
root@dragino-146d78:~# ping www.163.com
PING www.163.com (58.63.233.35): 56 data bytes
64 bytes from 58.63.233.35: seq=0 ttl=54 time=8.231 ms
64 bytes from 58.63.233.35: seq=1 ttl=54 time=8.709 ms
64 bytes from 58.63.233.35: seq=2 ttl=54 time=8.313 ms
64 bytes from 58.63.233.35: seq=3 ttl=54 time=7.953 ms
64 bytes from 58.63.233.35: seq=4 ttl=54 time=8.539 ms
^C
--- www.163.com ping statistics ---
5 packets transmitted, 5 packets received, 0% packet loss
round-trip min/avg/max = 7.953/8.349/8.709 ms
root@dragino-146d78:~#
```

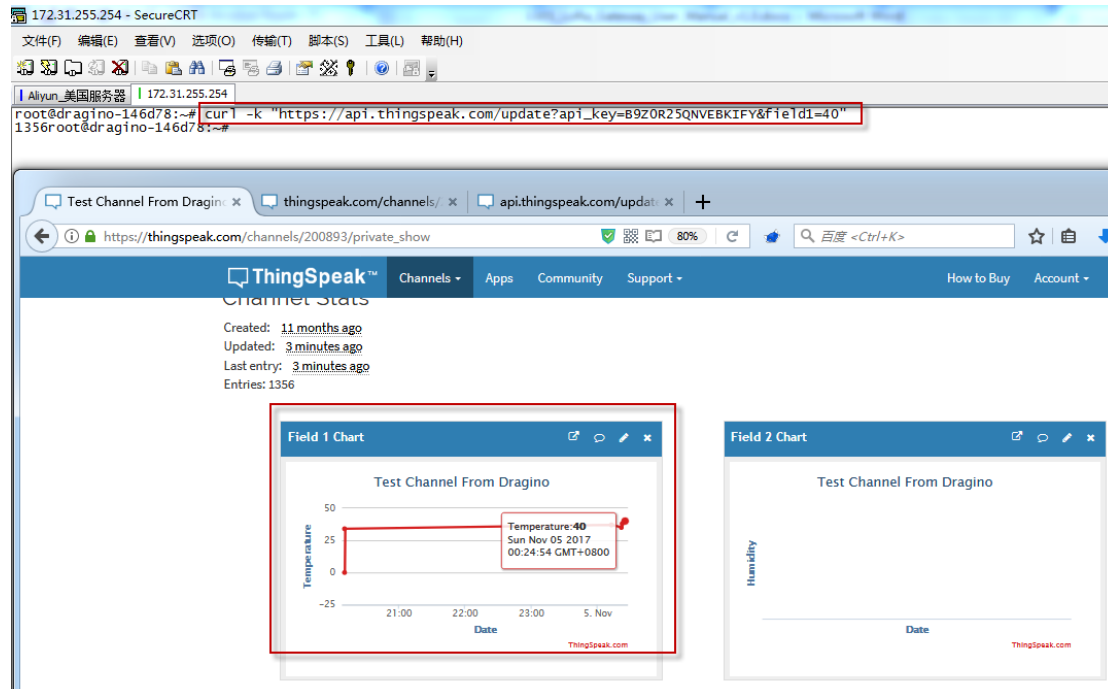
LG01 has built-in Linux tool curl. It is a very powerful tool for http communication. We can use this tool to handle RESTful API call in LG01.

The command to update a feed is as below:

`curl -k "https://api.thingspeak.com/update?api_key=B9Z0R25QNVEBKIFY&field1=40"`

(Make sure the "" is included , otherwise you will get null value in ThingSpeak)

Below is the output window:

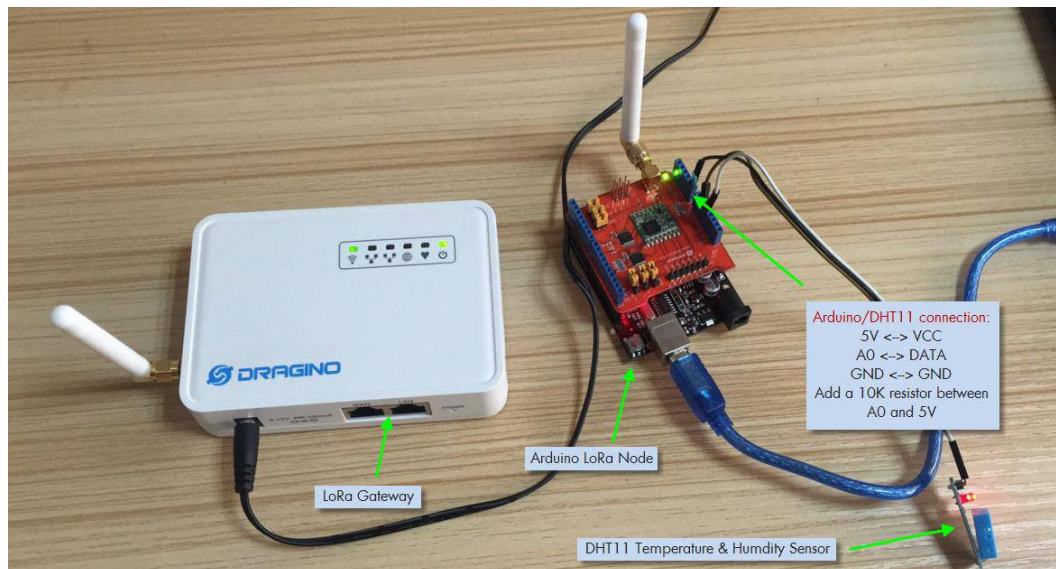


So we success to use LG01 to uplink data to ThingSpeak, the curl command is executed in the Linux side, finally, we will have to call `curl` command with sensor data variable in Arduino side. This is through the `process class` in Arduino and we will show it in the final sketch.

9.3.3 Integrate LoRa, Bridge and Curl

Here we will provide a complete example for our system. The hardware set up is as below:

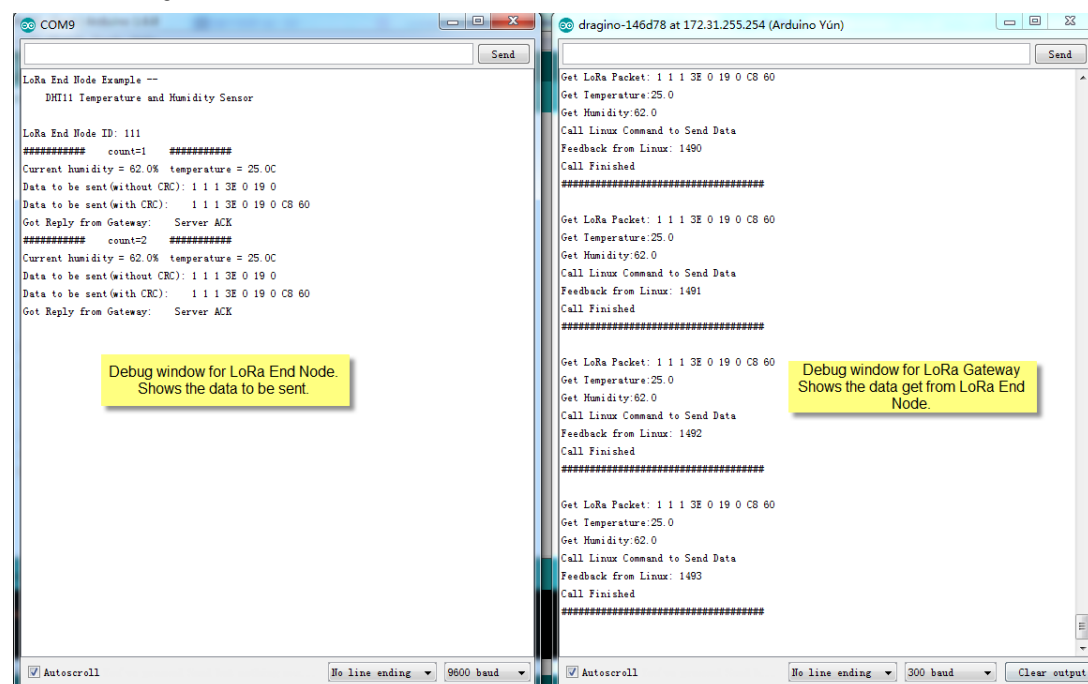
- ✓ **LoRa End Node:** LoRa Shied + UNO + DHT11 Temperature/Humidity sensor. The LoRa End node keeps getting temperature and humidity from the sensor and sends out via LoRa periodically.
- ✓ **LoRa Gateway LG01:** Listening on the LoRa wireless channel, while there is new LoRa packet arrives, parse it and send out to IoT Server.



The source code used here are:

- LoRa Shield + UNO : [Client Source Code](#)
- LG01 LoRa Gateway: [Gateway Source Code](#)

In the source code, there is well explaining about the functions and the code. Below is the result for the testing. We can see the

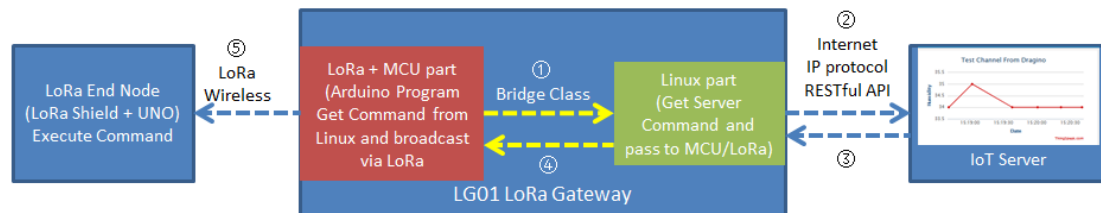


9.4 Step by Step Downlink Test

In this section, we will try to program LG01 to fetch download data from ThingSpeak, then broadcast this data to local LoRa network. The end node will get this message and check if they need to do something.

LoRa to RESTful Integration:

Downlink Data Flow , from ThingSpeak to Sensor



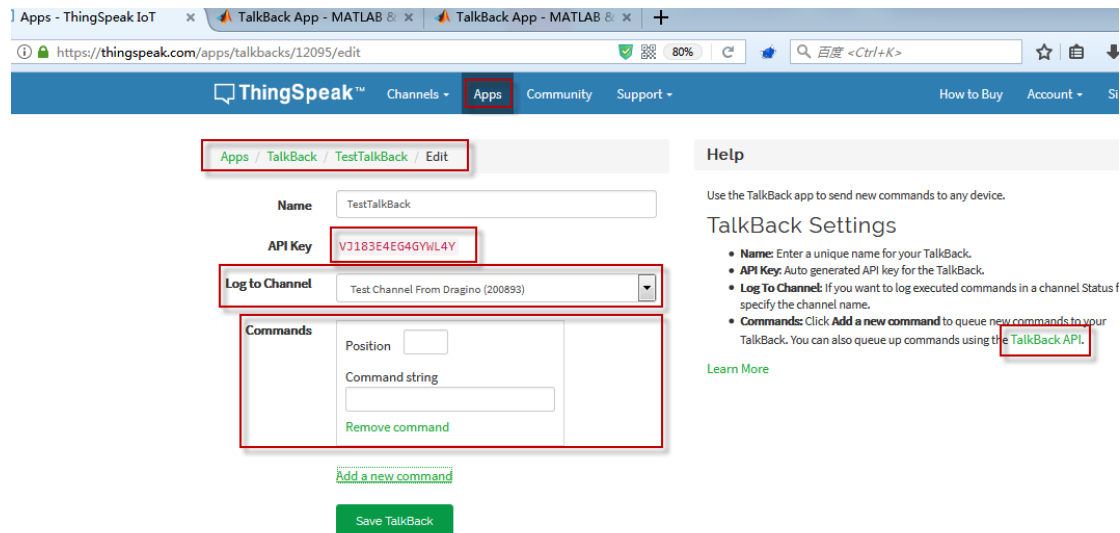
Data Flow:

- ①: LoRa MCU part send a request to Linux side, ask the Linux side to check if there is command from IoT Server
- ②: Linux send this request to server via RESTful call
- ③: If there is new command, server send a new command to Linux
- ④: Linux pass this command to MCU/LoRa.
- ⑤: LG01 MCU part broadcast this command to its LoRa network. The LoRa end node will get this message and check if they should execute it.

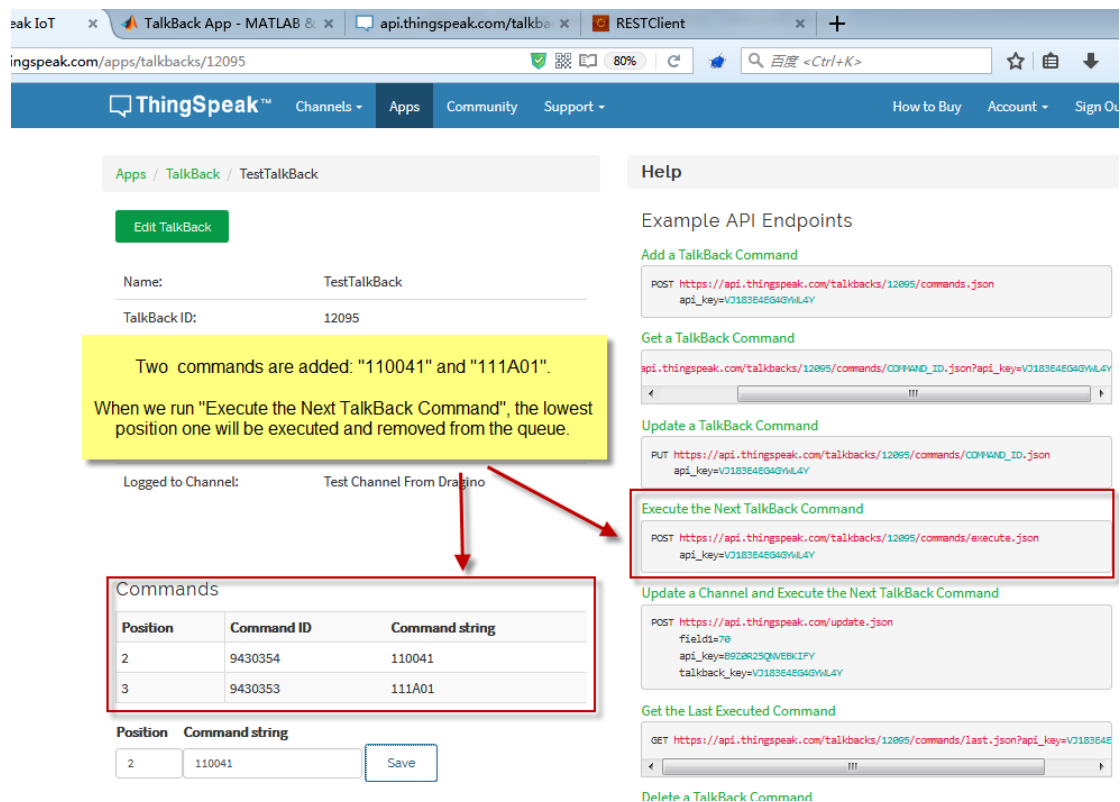
Similar with Uplink Example, we will first try to do it in PC, and then do it in Linux side, and finally integrate it with LoRa.

9.4.1 Create Talkback command and try RESTful API call in web

To do the downlink test we need to first create a talkback command in ThingSpeak. As below, From this page, we can get the talkback API key and set the command to be sent to the LoRa End Device.



Then we add talkback command and click Save TalkBack. The API for how to call this will appear in the right, as below:



Two commands are added: "110041" and "111A01".
When we run "Execute the Next TalkBack Command", the lowest position one will be executed and removed from the queue.

Position	Command ID	Command string
2	9430354	110041
3	9430353	111A01

Position Command string

2 110041 Save

Example API Endpoints

Add a TalkBack Command

POST <https://api.thingspeak.com/talkbacks/12095/commands.json>
api_key=VJ183E4EG4GYML4Y

Get a TalkBack Command

api.thingspeak.com/talkbacks/12095/commands/COMMAND_ID.json?api_key=VJ183E4EG4GYML4Y

Update a TalkBack Command

PUT https://api.thingspeak.com/talkbacks/12095/commands/COMMAND_ID.json
api_key=VJ183E4EG4GYML4Y

Execute the Next TalkBack Command

POST <https://api.thingspeak.com/talkbacks/12095/commands/execute.json>
api_key=VJ183E4EG4GYML4Y

Update a Channel and Execute the Next TalkBack Command

POST <https://api.thingspeak.com/update.json>
field1=70
api_key=B920R25QWEEKIFY
talkback_key=VJ183E4EG4GYML4Y

Get the Last Executed Command

GET https://api.thingspeak.com/talkbacks/12095/commands/last.json?api_key=VJ183E4EG4GYML4Y

Delete a TalkBack Command

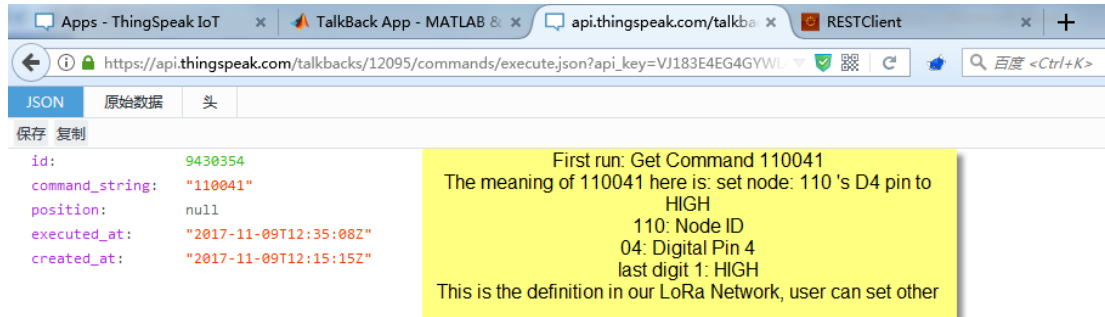
We can run the talkback API in browser to see if we can get the talkback commands:

The API we are going to use is:

https://api.thingspeak.com/talkbacks/12095/commands/execute.json?api_key=VJ183E4EG4GYWL4Y

(User should replace the 12095 and api_key with what they have in their command.)

Below are the results:



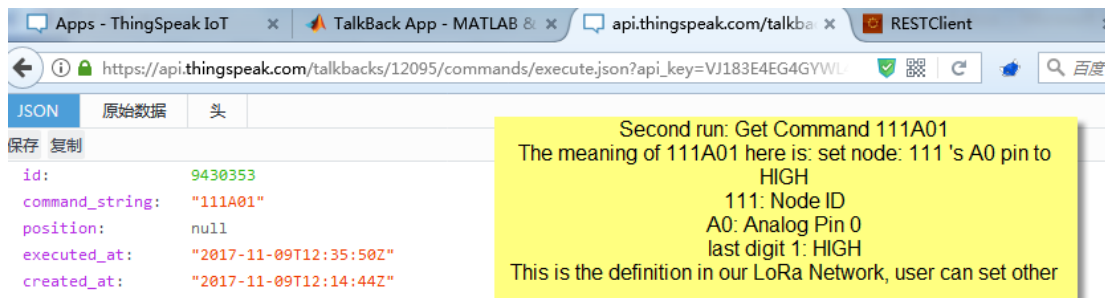
JSON

```

id: 9430354
command_string: "110041"
position: null
executed_at: "2017-11-09T12:35:08Z"
created_at: "2017-11-09T12:15:15Z"

```

First run: Get Command 110041
The meaning of 110041 here is: set node: 110 's D4 pin to HIGH
110: Node ID
04: Digital Pin 4
last digit 1: HIGH
This is the definition in our LoRa Network, user can set other



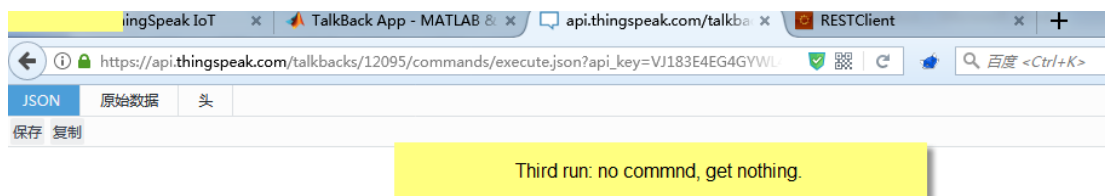
JSON

```

id: 9430353
command_string: "111A01"
position: null
executed_at: "2017-11-09T12:35:50Z"
created_at: "2017-11-09T12:14:44Z"

```

Second run: Get Command 111A01
The meaning of 111A01 here is: set node: 111 's A0 pin to HIGH
111: Node ID
A0: Analog Pin 0
last digit 1: HIGH
This is the definition in our LoRa Network, user can set other



JSON

```


```

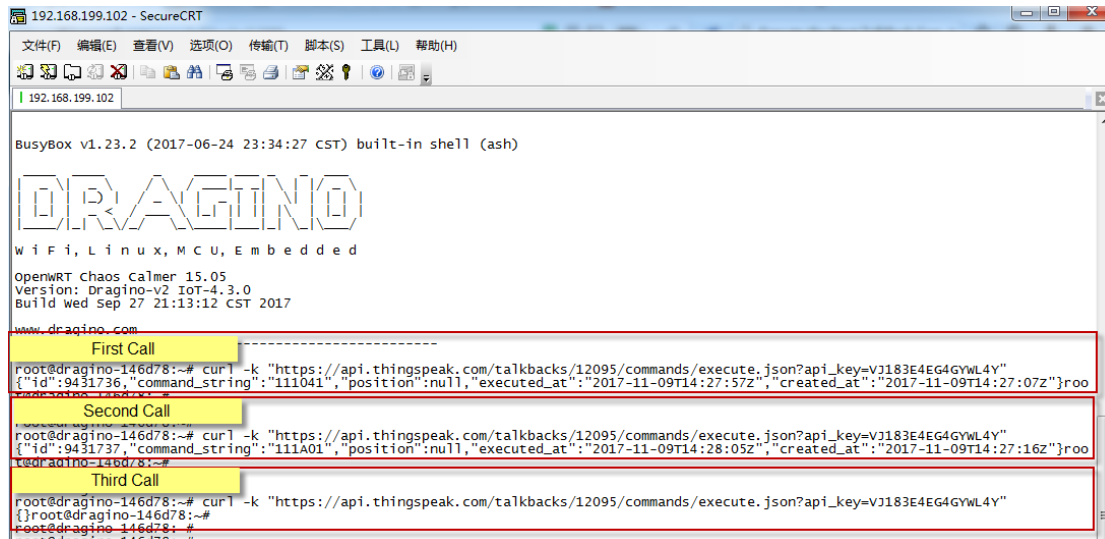
Third run: no commnd, get nothing.

9.4.2 Try RESTful API call with LG01 Linux command

The command to be used is **Execute the Next TalkBack Command**, with curl, it is

```
curl -k "https://api.thingspeak.com/update?api_key=B9Z0R25QNVEBKIFY&field1=40"
```

Below is the output for the Linux command test:



```

192.168.199.102 - SecureCRT
文件(F) 编辑(E) 查看(V) 选项(O) 传输(T) 脚本(S) 工具(L) 帮助(H)
192.168.199.102

BusyBox v1.23.2 (2017-06-24 23:34:27 CST) built-in shell (ash)

DRAGINO
W I F I , L I N U X , M C U , E m b e d d e d
OpenWRT chaos calmer 15.05
Version: Dragino-v2 IoT-4.3.0
Build wed Sep 27 21:13:12 CST 2017
www.dragino.com

First Call
root@dragino-146d78:~# curl -k "https://api.thingspeak.com/talkbacks/12095/commands/execute.json?api_key=VJ183E4EG4GYWL4Y"
{"id":9431736,"command_string":"111041","position":null,"executed_at":"2017-11-09T14:27:57Z","created_at":"2017-11-09T14:27:07Z"}root@dragino-146d78:~#

Second Call
root@dragino-146d78:~# curl -k "https://api.thingspeak.com/talkbacks/12095/commands/execute.json?api_key=VJ183E4EG4GYWL4Y"
{"id":9431737,"command_string":"111A01","position":null,"executed_at":"2017-11-09T14:28:05Z","created_at":"2017-11-09T14:27:16Z"}root@dragino-146d78:~#

Third Call
root@dragino-146d78:~# curl -k "https://api.thingspeak.com/talkbacks/12095/commands/execute.json?api_key=VJ183E4EG4GYWL4Y"
{"id":9431738,"command_string":"111A01","position":null,"executed_at":"2017-11-09T14:28:13Z","created_at":"2017-11-09T14:27:24Z"}root@dragino-146d78:~#

```

So we success to use LG01 to get commands (downlink data) from ThingSpeak, the curl command is executed in the Linux side, finally, we will have to call **curl** command in Arduino side and fetch the output , parse the command out of the curl output and send out the command to local LoRa network. This is through the **process class** in Arduino and we will show it in the final sketch.

Here we will provide a complete example for our system. The hardware set up is as below:

-
- LoRa Gateway
- LoRa Node
- LoRa Node <--> Relay
 VCC <--> 5V
 GND <--> GND
 Pin4 <--> IN
- Relay

The source code used here are:

- In the source code, there is well explaining about the functions and the code. Below is the result for the testing. We can see the result as below:



10. Example: Integrate LoRa with MQTT API

10.1 What is MQTT API?

MQTT is a machine-to-machine (M2M)/"Internet of Things" connectivity protocol. It was designed as an extremely lightweight publish/subscribe messaging transport. It is useful for connections with remote locations where a small code footprint is required and/or network bandwidth is at a premium. For example, it has been used in sensors communicating to a broker via satellite link, over occasional dial-up connections with healthcare providers, and in a range of home automation and small device scenarios.

Most IoT server support MQTT connection, for those servers, we can use MQTT to connect to publish data or subscribe to a channel.

This example will show how to use LG01 to connect to the IoT Server via MQTT.

The server we use here is [ThingSpeak](https://thingspeak.com). They have the [MQTT API documented here](#). We have already used the ThingSpeak as example in RESTful so we ignore the step of configure IoT server.

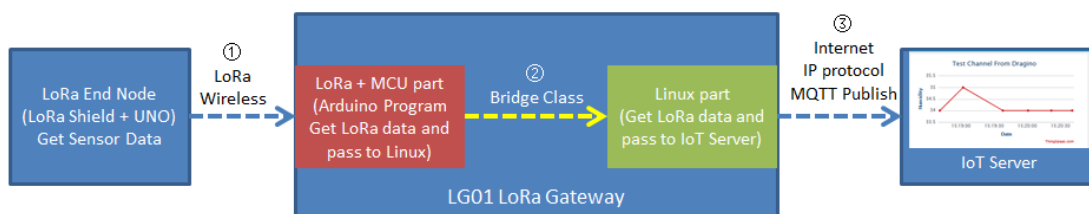
The parameters we need here are:

- ✓ [Account User ID](#): Can be found in "Account → My Profile → User ID"
- ✓ [MQTT API](#): Can be found in "Account → My Profile → User ID"
- ✓ [Channel ID](#): Which channel we want to publish data or subscribe.
- ✓ [Channel API](#): the write API key for this channel.

10.2 Step by Step Uplink Test

In this section, we will try to program LG01 to uplink data to ThingSpeak. The data flow in this example is as below:

LoRa to MQTT Integration: Uplink Data Flow to ThingSpeak



Data Flow:

- ①: LoRa end node get data from sensor and send out via LoRa wireless protocol
- ②: LoRa/MCU part in LG01 get the sensor data from LoRa wireless. and pass the data to Linux side
- ③: Linux part in LG01 send the sensor data to IoT server via MQTT Publish.

We have already tried ① and ② in the above simple LoRa example. Now we will try the step ③ first, after it work as expect, we will integrate these three steps together for a complete uplink example.

10.2.1 Simulate MQTT Publish via Desktop MQTT tool

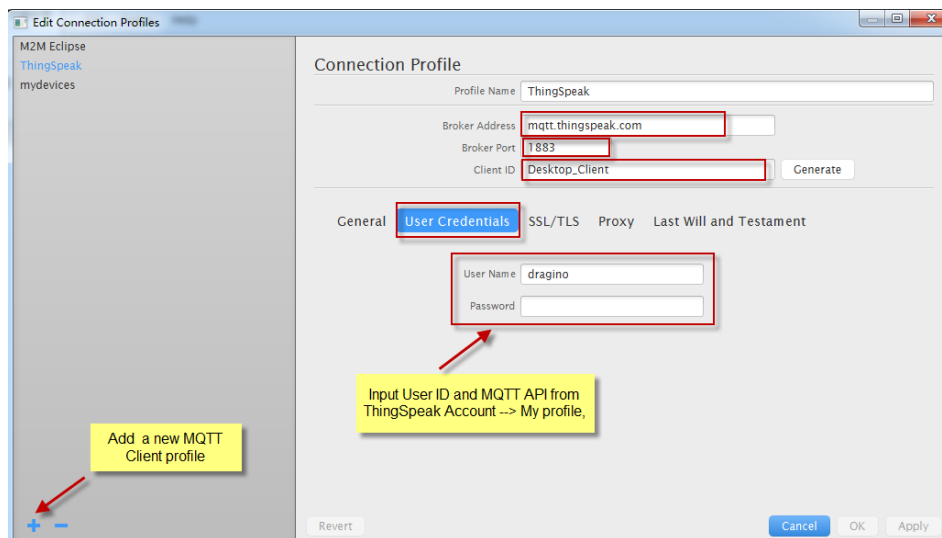
In the PC, download and install MQTT.fx.

Open MQTT.fx and configure add a new MQTT client, as below:

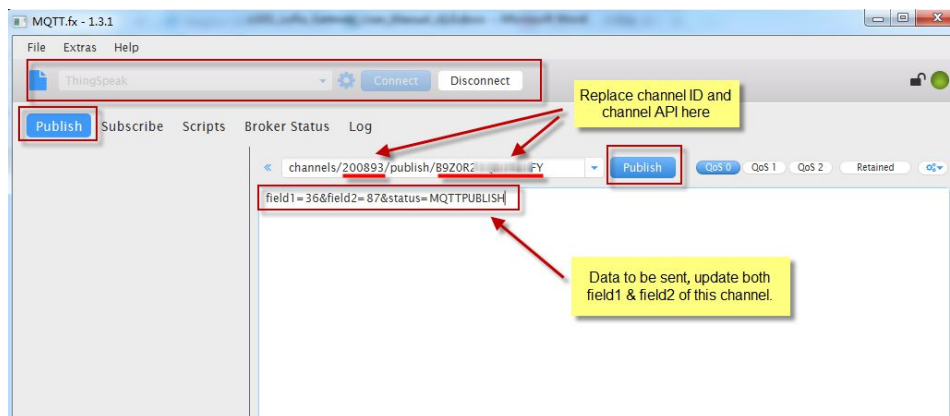
Broker Address: mqtt.thingspeak.com

Broker Port: 1883

Client ID: User Defined.



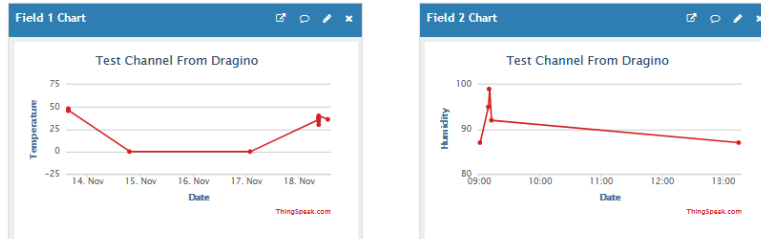
After add the profile, connect it and publish to the corresponding Channel with correct API key.



And we can see the update in the channel:

Channel Stats

Created: 11 months ago
 Updated: less than a minute ago
 Last entry: less than a minute ago
 Entries: 1762



10.2.2 Try MQTT Publish with LG01 Linux command

First, we need to make sure the LG01 has internet access. We can log in the SSH and ping an Internet address and see if it get through. As below:

```

172.31.255.254 - SecureCRT
文件(F) 编辑(E) 查看(V) 选项(O) 传输(T) 脚本(S) 工具(L) 帮助(H)
| Aliyun_美国服务器 | 172.31.255.254
root@dragino-146d78:~# ping www.163.com
PING www.163.com (58.63.233.35): 56 data bytes
64 bytes from 58.63.233.35: seq=0 ttl=54 time=8.231 ms
64 bytes from 58.63.233.35: seq=1 ttl=54 time=8.709 ms
64 bytes from 58.63.233.35: seq=2 ttl=54 time=8.313 ms
64 bytes from 58.63.233.35: seq=3 ttl=54 time=7.953 ms
64 bytes from 58.63.233.35: seq=4 ttl=54 time=8.539 ms
^C
--- www.163.com ping statistics ---
5 packets transmitted, 5 packets received, 0% packet loss
round-trip min/avg/max = 7.953/8.349/8.709 ms
root@dragino-146d78:~#
  
```

LG01 has built-in Linux tool [mosquitto_pub](#). We can use this command to publish the data to ThingSpeak.

The command to update a feed is as below:

```

mosquitto_pub -h mqtt.thingspeak.com -p 1883 -u dragino -P QZXTxxxxxO2J -i
dragino_Client -t channels/200893/publish/B9Z0R25QNVEBKIFY -m
"field1=34&field2=89&status=MQTTPUBLISH"
  
```

(Make sure the "" is included, otherwise you only one data is upload)

Below is the output window:

```

172.31.255.254 - SecureCRT
文件(F) 编辑(E) 查看(V) 选项(O) 传输(T) 脚本(S) 工具(L) 帮助(H)
| 172.31.255.254 |
root@dragino-146d78:~# mosquitto_pub -h mqtt.thingspeak.com -p 1883 -u dragino -P Q
ZXTxxxxxO2J -i dragino_Client -t channels/200893/publish/B9Z0R25QNVEBKIFY -m "
field1=34&field2=89&status=MQTTPUBLISH"
root@dragino-146d78:~#
  
```

After running this command, we can see the data are updated to ThingSpeak, which has same result as what we did at mqtt.fx

So we success to use LG01 to uplink data to ThingSpeak, the `mosquitto_pub` command is executed in the Linux side, finally, we will have to call `mosquitto_pub` command with sensor data variable in Arduino side. This is through the `process class` in Arduino and we will show it in the final sketch.

For LG01 new version [4.3.3](#). You just need to configure LG01 Web settings then can realize the function of MQTT.

Select IoT Server

Select the IoT Server type to connect

Select IoT Server

IoT Server
MQTT Server

Log Debug Info
Level 1

Show Log in System Log

Select MQTT

Save & Apply

Save

Reset

dragino-181b01

Status

Sensor

System

Network

Logout

MQTT Server Settings

Configuration to communicate with MQTT server

Configure MQTT Server

Select Server

ThingSpeak MQTT

Select ThingSpeak Server

User Name [-u]

cheneywang

Password [-P]

UZ4NGHKJMKs9WR5E

MQTT API Keys

Client ID [-i]

dragino_client

MQTT Channel

Match between Local Channel and remote channel

Local Channel in /var/iot/channels/	Remote Channel in IoT Server	Write API Key
Users can fill in arbitrarily		
12345	465952	ISUQYWBWESINZE60
	The channel ID from IOT Server	<div>Edit</div> <div>Delete</div>

Login SSH and input the command.


```

This version does not include PKI and PKCS #11 functionality.

BusyBox v1.23.2 (2017-12-21 22:54:56 CST) built-in shell (ash)

DRAGINO

W i f i , L i n u x , M C U , E m b e d d e d

OpenWRT Chaos Calmer 15.05
Version: Dragino-v2 IoT-4.3.3
Build Mon Mar 26 15:13:47 CST 2018

www.dragino.com
-----
root@dragino-l81b01:~# store_data 12345 "field1=33&field2=55"
root@dragino-l81b01:~#

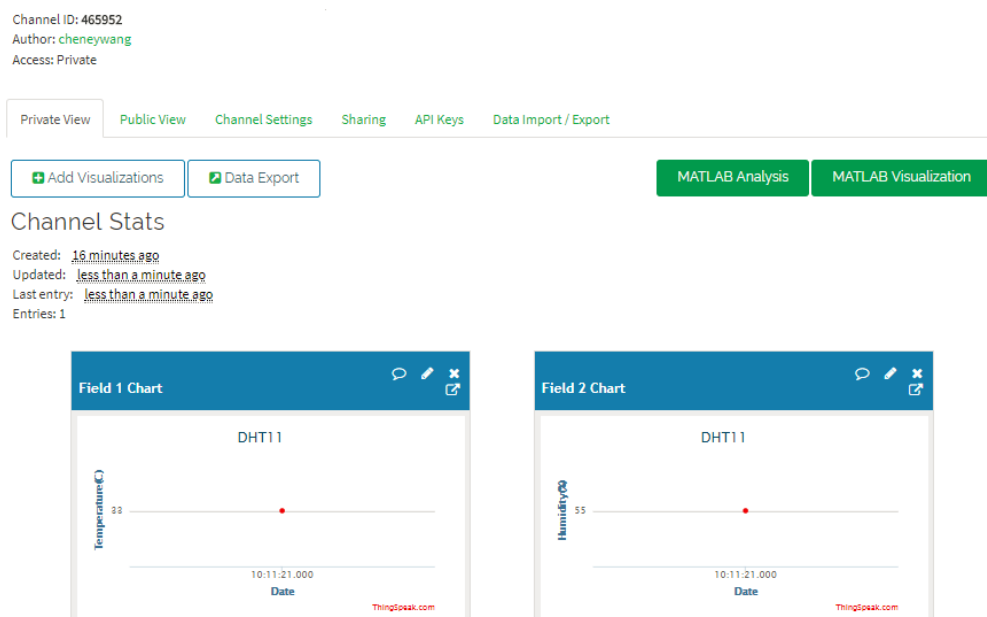
```

Connected to 10.130.2.102 SSH2 - aes128-cbc - hmac-md5 80x24

The command to update a feed is as below:

`store_data 12345 "field1=33&field2=55"`

(Make sure the "" is included, otherwise you only one data is upload)

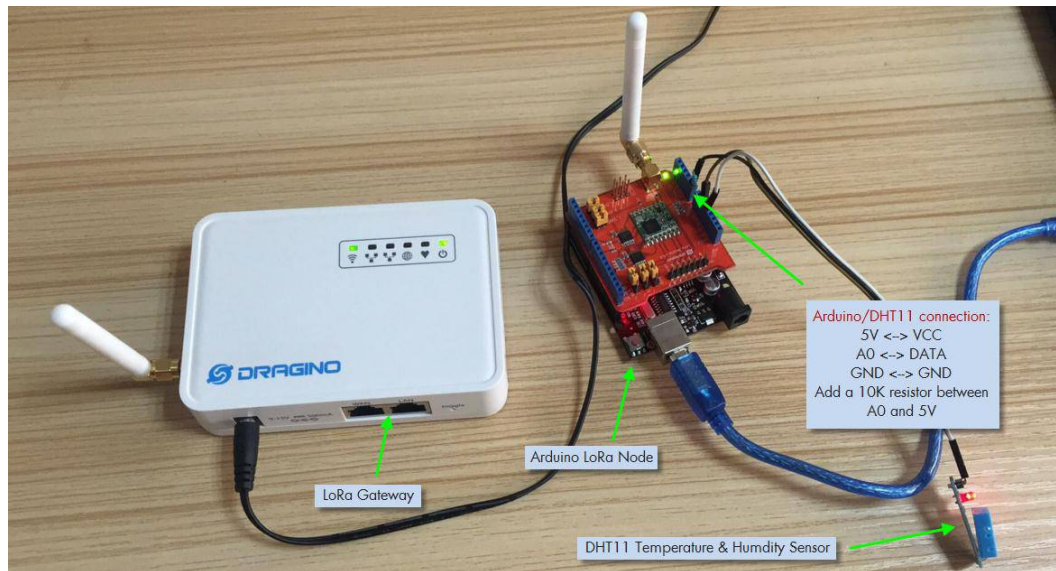


After running this command, we can see the data are updated to ThingSpeak, which has same result as what we did at previous version.

10.2.3 Integrate LoRa, Bridge and mosquitto_pub

Here we will provide a complete example for our system. The hardware set up is as below:

- ✓ **LoRa End Node:** LoRa Shied + UNO + DHT11 Temperature/Humidity sensor. The LoRa End node keeps getting temperature and humidity from the sensor and sends out via LoRa periodically.
- ✓ **LoRa Gateway LG01:** Listening on the LoRa wireless channel, while there is new LoRa packet arrives, parse it and send out to IoT Server.



The source code used here are:

- LoRa Shield + UNO : [Client Source Code\(4.3.3 Version\)](#)
- LG01 LoRa Gateway: [Gateway Source Code\(4.3.3 Version\)](#)

This version of Sketch implements these features:

1. Read the LG01 configuration information from Linux.
2. Receive the LoRa node data and store the data.
3. Send reply after then receive LoRa node data.
4. Sketch will write active content periodically.(Watch dog feature)

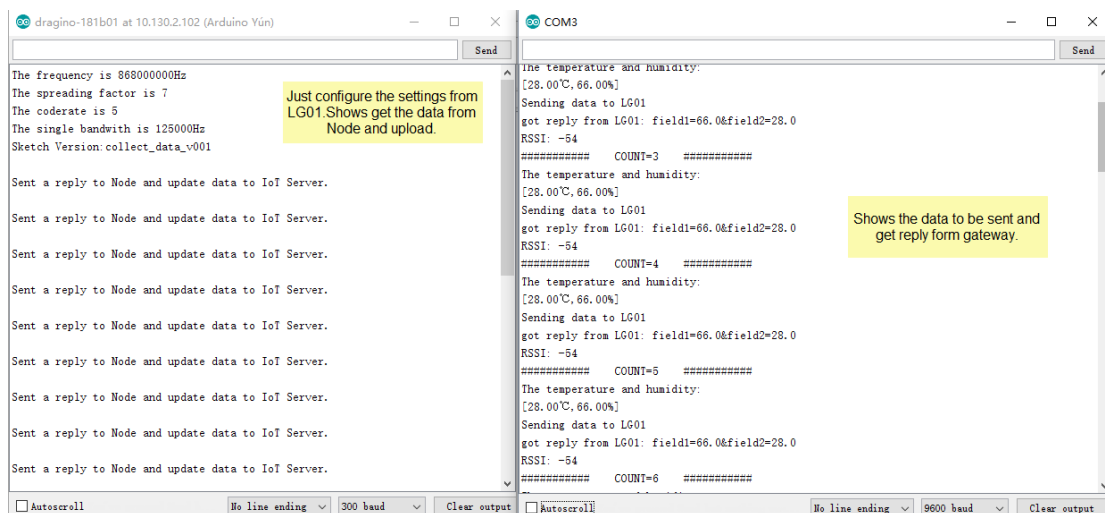
Configure from LG01:

Radio Settings

Radio settings requires MCU side sketch support

TX Frequency	<input type="text" value="9 digits Frequency, etc:868100000"/>
	? Gateway's LoRa TX Frequency
RX Frequency	<input type="text" value="868000000"/>
	? Gateway's LoRa RX Frequency
Encryption Key	<input type="text" value="Encryption Key"/>
Spreading Factor	<input type="text" value="SF7"/>
Transmit Spreading Factor	<input type="text" value="SF9"/>
Coding Rate	<input type="text" value="4/5"/>
Signal Bandwidth	<input type="text" value="125 kHz"/>
Preamble Length	<input type="text" value="8"/>
	? Length range: 6 ~ 65536

In the source code, there is well explaining about the functions and the code. Below is the result for the testing. We can see the



```

dragino-181b01 at 10.130.2.102 (Arduino Yun)
Send
The frequency is 868000000Hz
The spreading factor is 7
The coderate is 5
The single bandwidth is 125000Hz
Sketch Version: collect_data_v001

Sent a reply to Node and update data to IoI Server.
Sent a reply to Node and update data to IoI Server.
Sent a reply to Node and update data to IoI Server.
Sent a reply to Node and update data to IoI Server.
Sent a reply to Node and update data to IoI Server.
Sent a reply to Node and update data to IoI Server.
Sent a reply to Node and update data to IoI Server.
Sent a reply to Node and update data to IoI Server.
Sent a reply to Node and update data to IoI Server.
Sent a reply to Node and update data to IoI Server.





COM3
Send
The temperature and humidity:
[28.00°C, 66.00%]
Sending data to LG01
got reply from LG01: field1=66.0&field2=28.0
RSSI: -54
COUNT=3
The temperature and humidity:
[28.00°C, 66.00%]
Sending data to LG01
got reply from LG01: field1=66.0&field2=28.0
RSSI: -54
COUNT=4
The temperature and humidity:
[28.00°C, 66.00%]
Sending data to LG01
got reply from LG01: field1=66.0&field2=28.0
RSSI: -54
COUNT=5
The temperature and humidity:
[28.00°C, 66.00%]
Sending data to LG01
got reply from LG01: field1=66.0&field2=28.0
RSSI: -54
COUNT=6
  
```

Sketch can write the new version of MCU.

Micro-Controller settings

Configure correct Arduino profile will let you to able upload avr program via Arduino IDE and WiFi

MCU Upload Profile

MCU Part	<input type="text" value="ATmega328P"/>  Auto detected by software on boot
Profile	<input type="text" value="Arduino Uno w/ATmega328P"/>  Auto detected by software on boot
MCU Version	collect_data_v001
Add Bootloader	<input checked="" type="checkbox"/>  Add Arduino bootloader while upload
MCU Watchdog	<input type="checkbox"/>  Reset MCU while sketch hang up

Sketch will write active content periodically.

```

root@dragino-101b01:~# cd /tmp/iot/
root@dragino-101b01:/tmp/iot# cat dog
1522724284
root@dragino-101b01:/tmp/iot# cat dog
1522724289
root@dragino-101b01:/tmp/iot# cat dog
1522724291
root@dragino-101b01:/tmp/iot# cat dog
1522724292
root@dragino-101b01:/tmp/iot# cat dog
1522724296
root@dragino-101b01:/tmp/iot#

```

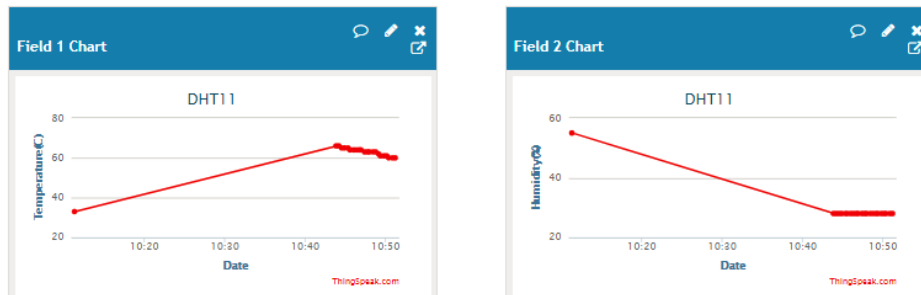
Watch dog feature

Connected to 10.130.2.102 | SSH2 - aes128-cbc - hmac-md5 | 80x24

Check the result from IoT Server.

Channel Stats

Created: [about an hour ago](#)
 Updated: [less than a minute ago](#)
 Last entry: [less than a minute ago](#)
 Entries: 22



The more : [Through MQTT to upload data](#)

10.3 Step by Step Downlink Test

Now we have two ways to receiving data for downlink.

1. Use [MQTT.fx](#)

About configure follow as 10.2.1 [MQTT tool](#).

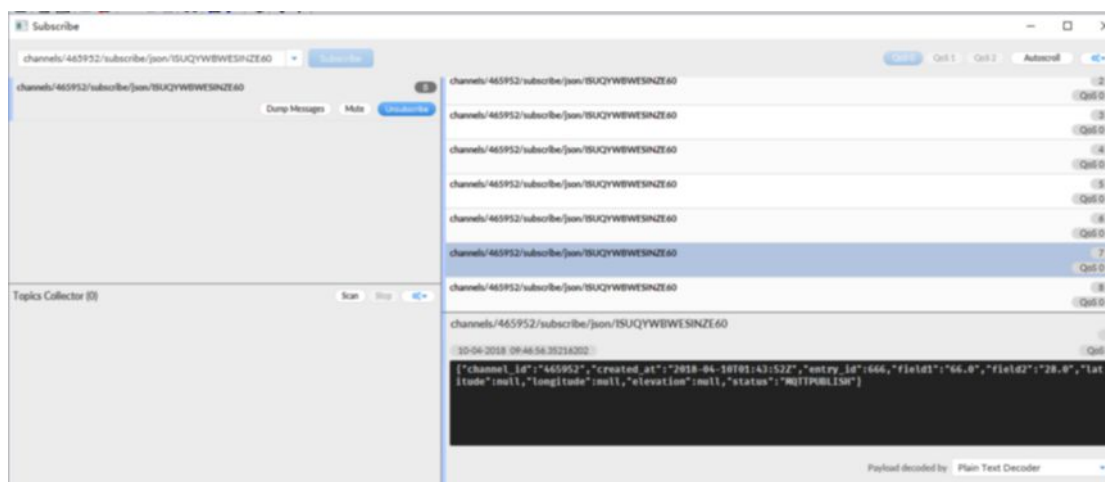
Input command:

channels/465952/subscribe/json/ISUQYWBWESINZE60

Ex)Channel ID: 465952

Write_API_Key:ISUQYWBWESINZE60

And you can get these result:



2. Input commands in the LG01 linux console

Open SSH and Login.

```
10.130.2.167 - default - SSH Secure Shell
File Edit View Window Help
Quick Connect Profiles

SSH Secure Shell 3.2.9 (Build 283)
Copyright (c) 2000-2003 SSH Communications Security Corp - http://www.ssh.com/
This copy of SSH Secure Shell is a non-commercial version.
This version does not include PKI and PKCS #11 functionality.

BusyBox v1.23.2 (2017-12-21 22:54:56 CST) built-in shell (ash)

DRAGINO
W i F i , L i n u x , M C U , E m b e d d e d
OpenWRT Chaos Calmer 15.05
Version: Dragino-v2 IoT-4.3.3
Build Wed Feb 14 10:16:48 CST 2018
www.dragino.com
-----
root@dragino-193a18:~#
```

Input command:

```
mosquitto_sub -h mqtt.thingspeak.com -p 1883 -u dragino -P UZ4NGHKJMKs9WR5E -t
channels/465952/subscribe/json/ISUQYWBWESINZE60
```

```
root@dragino-193a18:~# mosquitto_sub -h mqtt.thingspeak.com -p 1883 -u dragino -P UZ4NGHKJMKs9WR5E -t channels/465952/subscribe/json/ISUQYWBWESINZE60
{"channel_id":465952,"created_at":"2018-04-10T01:20:22Z","entry_id":660,"field1":"66.0","field2":"28.0","latitude":null,"longitude":null,"elevation":null,"status":"MQTTPUBLISH"}
{"channel_id":465952,"created_at":"2018-04-10T01:34:03+00:00","entry_id":661,"field1":"65.0","field2":"28.0","latitude":null,"longitude":null,"elevation":null,"status":"MQTTPUBLISH"}
{"channel_id":465952,"created_at":"2018-04-10T01:38:58+00:00","entry_id":662,"field1":"64.0","field2":"28.0","latitude":null,"longitude":null,"elevation":null,"status":"MQTTPUBLISH"}
```

And if your end node send data continuously, it will receive the downlink data continuously.

11. Advance Examples

11.1 Example for Connecting to TTN LoRaWAN server

Please check this link for detail: [Connect to TTN](#)

11.2 Multiple Nodes examples

The example shows how the gateway can handle multiple nodes up to several hundreds. The example can be found at [IDE --> File --> Examples --> Dragino --> LoRa --> Concurrent](#)

How it works:

This concurrent client sketch is working together with the concurrent gateway sketch. Before using this sketch, please use the write_client_id sketch to write a client ID in the EEPROM. Client ID is the unique id for each client in the LoRa network. write_gateway_id to gateway is not necessary, if not write, gateway id will be 0xFF.

- When the client boot, it will keep listening for the broadcast message from LoRa Gateway.

- When the gateway sketch boot, it will broadcast a message to set up a LoRa Network. If it gets broadcast message, client will send a join request message to gateway, when the join request message arrive to gateway, the gateway will send back a join-ack message with client id and add this client to the LoRa Network.
- If the client gets its join-ack message for its join request, it will enter the mode to listen the data-request message from gateway. In this mode, if client get a data-request message for this client it will send back a data message to the gateway.
- After client in data_request listening mode, if it has not receive any message from gateway in a timeout, it will go back to the network set up mode to listen the broadcast message.
- Gateway will refresh the LoRa network periodically for adding new client or remove unreachable client.

This example using the polling method between LoRa node and Gateway, it will minimize the LoRa packets transfer on the air and avoid congestion. It is suitable for a not real time LoRa work.

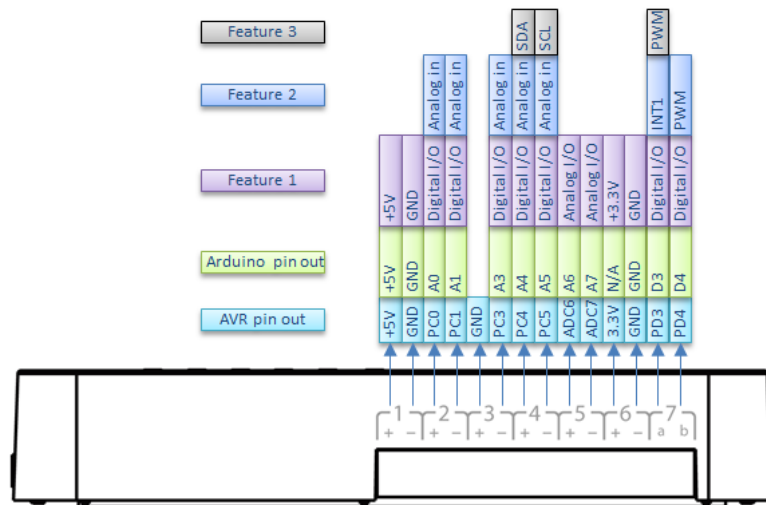
Performance test in a room with 100 nodes and 1 gateway shows:

- a) Gateway require about 1.5 minutes to set up this 100 nodes Network
- b) Gateway takes about 2 minutes to do polling for these 100 nodes.

User can adjust the timing in the sketch from case by case.

11.3 How to use the sensor pin of LG01-S?

The LG01-S has the external sensor pins from the Mega328P MCU, it can connect to external sensor, below is the pin definition for LG01-S:

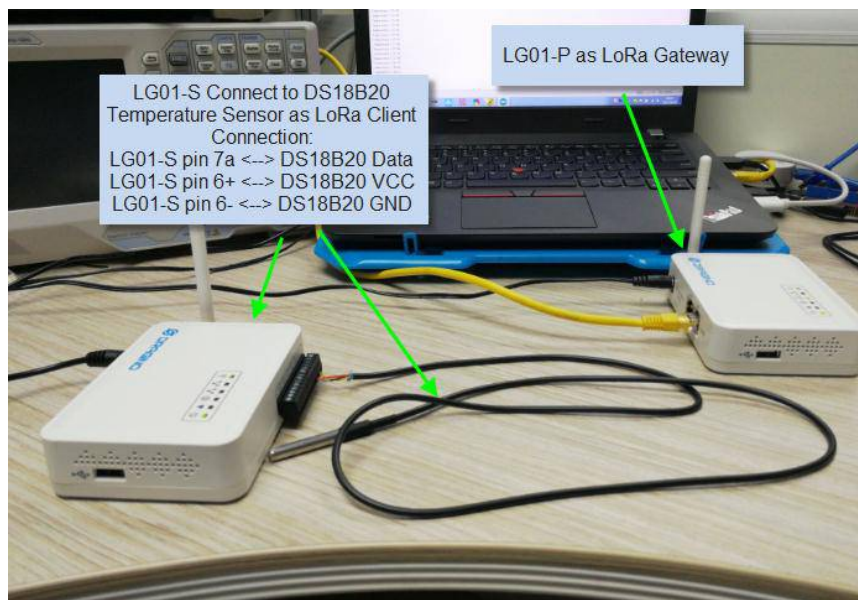


LG01-S Pinout

The program method for these pins are the same as Arduino, **what should notice is that the pins are 3.3v I/O base.**

Here is an example for how to use it with DS18B20 temperature sensor.

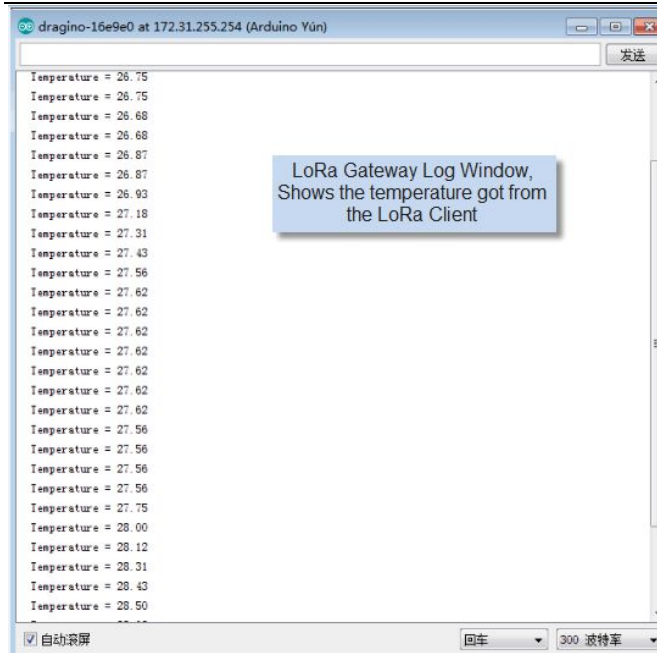
Hardware Setup as below:



Source code is in this link:

- ✓ [Sensor and LoRa client side](#)
- ✓ [Gateway side](#)

Result screen shot:



11.4 More Examples

Dragino keep updating examples in our wiki, more examples please refer the link:

[Dragino Examples Catalog](#)

12. FAQ

12.1 Why there is 433/868/915 version LoRa part?

Different country has different rules for the ISM band for using the LoRa. Although the LoRa chip can support a wide range of Frequency, we provide different version for best tune in the LoRa part. That is why we provide different version of LoRa.

12.2 What is the frequency range of LG01 LoRa part?

The chip used in the LoRa part is:

Version	LoRa IC	Support Frequency	Best Tune Frequency
433	Semtech SX1278	Band2(LF): 410 ~525Mhz Band3(LF): 137 ~175Mhz	433Mhz
868	Semtech SX1276	Band1(HF): 862 ~1020Mhz	868Mhz
915	Semtech SX1276	Band1(HF): 862 ~1020Mhz	915Mhz

User can set the LoRa within above frequency range in the software.

12.3 What kind of LoRa devices can the gateway support?

The LoRa part software is running in the Mega328P MCU. And we use the Radiohead Library as examples. If other LoRa devices are running the same Radiohead library, same frequency and same encryption, they should be able to communicate with this gateway.

User can also run other LoRa protocol on the MCU to support other LoRa devices they want.

Here is an Example to Show how to support RN2483: [RN2483 Compatible](#).

12.4 How many nodes can the LG01 support?

The maximum support end-node depends on how the communication (how often) between the end-nodes and gateway. In a lab testing using the [simple LoRa example](#), if the end nodes try to send data to the gateway at every 5 minutes, there will be data lost after the network has 20~30 nodes due to Channel Collision.

If user want to reach more nodes, user can consider using the polling method to ensure that each time will only have a LoRa signal transmit in the frequency. If the gateway uses polling method to get data from the end node, it can support several hundred nodes or more. Examples can see:

[Polling example for LoRa](#).

12.5 What kind of Server the LG01 can support?

The Linux side of LG01 is OpenWrt, it is open source and users can develop application over it.

Basically it can support most IoT servers if use the right API. We have examples for how to connect some servers via typical protocol (MQTT,RESTful) for IoT, MQTT or RESTful. From this link:

[IoT Server Examples](#).

12.6 Can I make my own firmware for LG01? Where can I find the source code of LG01?

Yes, User can make own firmware for LG01 for branding purpose or add customized application.

The LG01 source code and compile instruction can be found at:

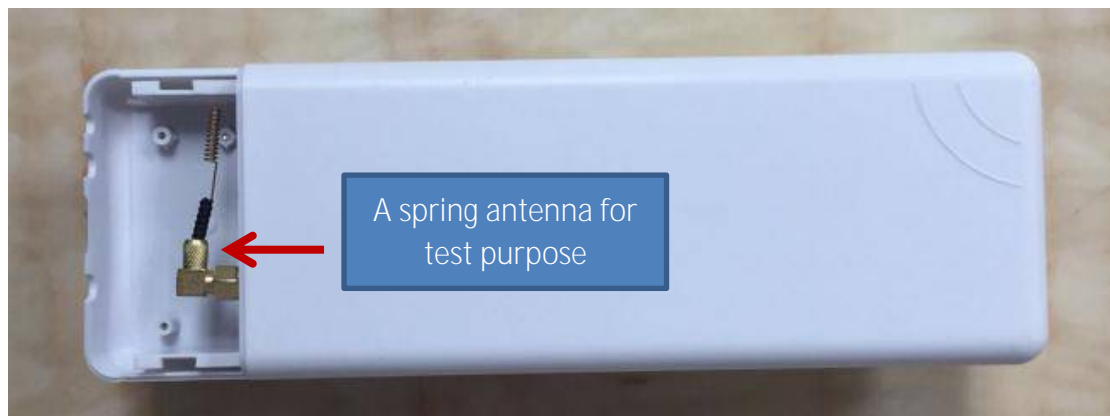
<https://github.com/dragino/openwrt-cc-15.05>

12.7 How to get more examples for this device?

We keep releasing Arduino Examples in the Dragino examples directory under Arduino IDE. If user install the dragino board earlier and we have release new examples. The new ones won't show up in the IDE except the user update the board profile. To update, User can remove the board profile in Arduino board manager and install it again.

12.8 What is the Antenna require for OLG01?

The OLG01 shipped with a small LoRa Antenna inside the box as attached:



User can use this Spring Antenna for testing purpose. For field deployment, user can replace it with high performance outdoor antenna such as fibre-glass epoxy antenna. when choose antenna, please make sure the antenna works with the LoRa frequency for the device.

12.9 More FAQs about general LoRa questions

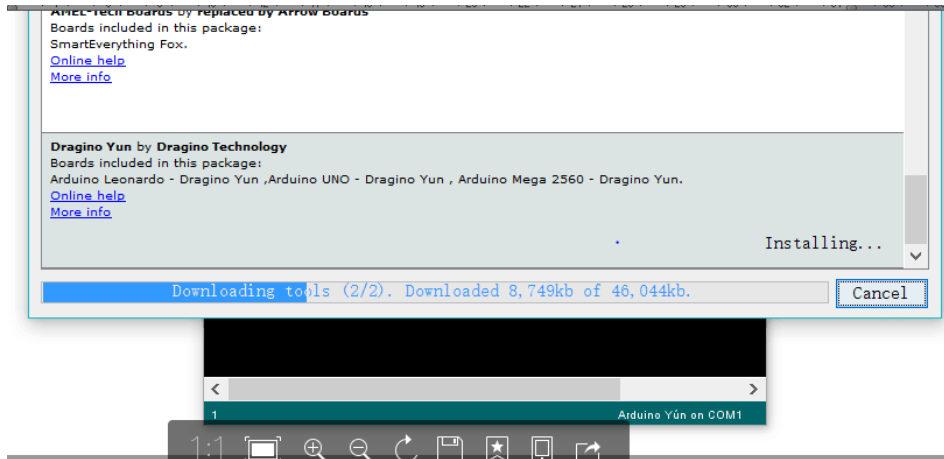
We have keep updating more FAQs in our Wiki about some general questions. The link is here:

http://wiki.dragino.com/index.php?title=LoRa_Questions

13. Trouble Shooting

13.1 I can't download the Dragino profile in Arduino IDE.

If IDE quite slowly while downloading the Dragino profile in board manager and stuck somewhere. As show below, it is because your network has slow connection to some packages from Arduino IDE.



To solve this, user can manually add Dragino profile. Below is the step:

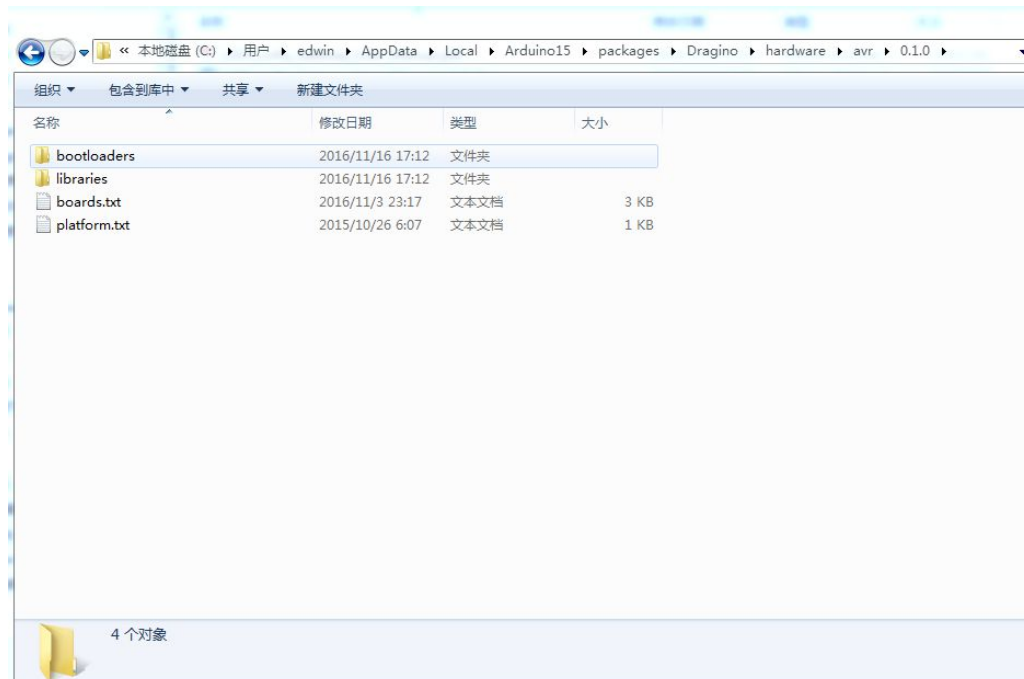
1/ Download the profile from <https://github.com/dragino/Arduino-Profile-Examples>

2/ Unzip it and put the content under this directory:

C:\Users\xxx\AppData\Local\Arduino15\packages\Dragino\hardware\avr\0.1.0

Note: Different system may have different directory for Arduino15, if you can't see Dragino\hardware\avr\0.1.0, just create it in your Arduino15 directory.

The final directory content should as below.



13.2 Bridge between MCU and Linux module doesn't work.

Some possibilities:

1/ You have used the [Serial class](#) in MCU sketch, like `Serial.begin(9600)`, The bridge library in Mega328P use the same Serial interface. So if you have the Serial code in the sketch. They will conflict and bridge **doesn't** work.

2/ The IDE get mess in the serial setting when you compile other sketch . In this case, you can close the IDE and open it again.

13.3 Arduino IDE doesn't detect LG01

Check below points if this issue happens:

- ✓ The Arduino IDE version is 1.5.4 or later
- ✓ Your PC and Yun LG01 are in the same network.
- ✓ Try to access the LG01 via Web or SSH, then check the IDE again.
- ✓ If above still doesn't work, SSH log in the LG01 and run: `/etc/init.d/avahi-daemon restart` to restart the service so IDE can detect the LG01.

13.4 I get kernel error when install new package, how to fix?

In some case, when install package, it will generate kernel error such as below:

```
root@dragino-16c538:~# opkg install kmod-dragino2-si3217x_3.10.49+0.2-1_ar71xx.ipk
```

```
Installing kmod-dragino2-si3217x (3.10.49+0.2-1) to root...
```

```
Collected errors:
```

```
* satisfy_dependencies_for: Cannot satisfy the following dependencies for
```

```
kmod-dragino2-si3217x:
```

```
*      kernel (= 3.10.49-1-4917516478a753314254643facdf360a) *
```

```
* opkg_install_cmd: Cannot install package kmod-dragino2-si3217x.
```

In this case, user can use the `--force-depends` option to install such package.

```
opkg install kmod-dragino2-si3217x_3.10.49+0.2-1_ar71xx.ipk --force-depends
```

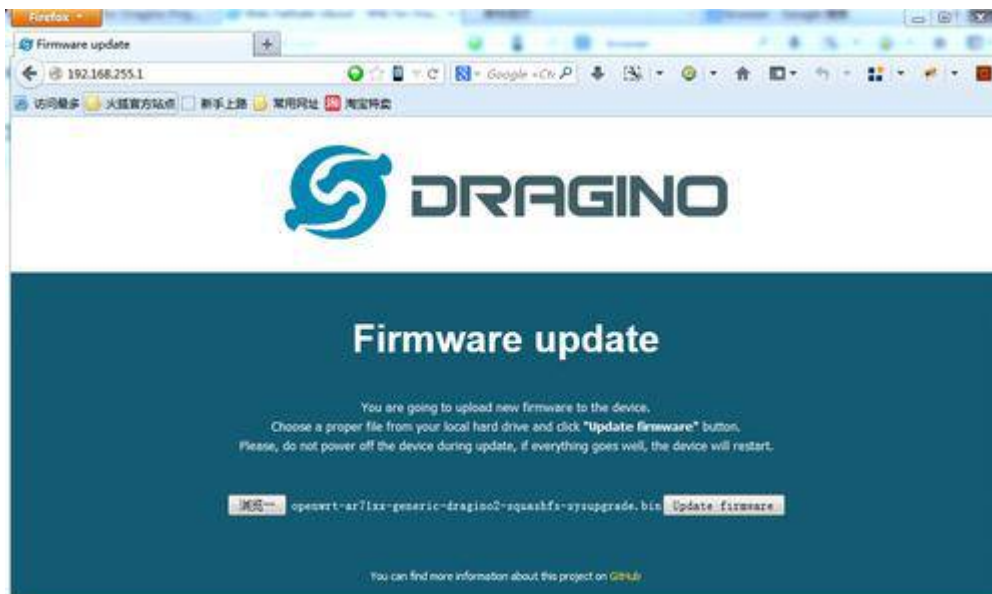
13.5 How to recover the LG01 if firmware crash

LG01 provide user a full control on its Linux system, it is possible that the device will brick and can't boot after improper modification in some booting files.

In this case, user can recover the whole Linux system by uploading a new firmware via Web Failsafe mode.

Procedure is as below:

- Use a RJ45 cable to connect the PC to LG01's port directly.
- Set the PC to ip 192.168.255.x, netmask 255.255.255.0
- Pressing the toggle button and power on the device
- All LEDs of the device will blink, release the toggle button after four blinks
- All LEDs will then blink very fast once, this means device detect a network connection and enter into the web-failsafe mode. Your PC should be able to ping 192.168.255.1 after device enter this mode.
- Open 192.168.255.1 in web browser
- Select a squashfs-sysupgrade type firmware and update firmware.



13.6 I configured LG01 for WiFi access and lost its IP. What to do now?

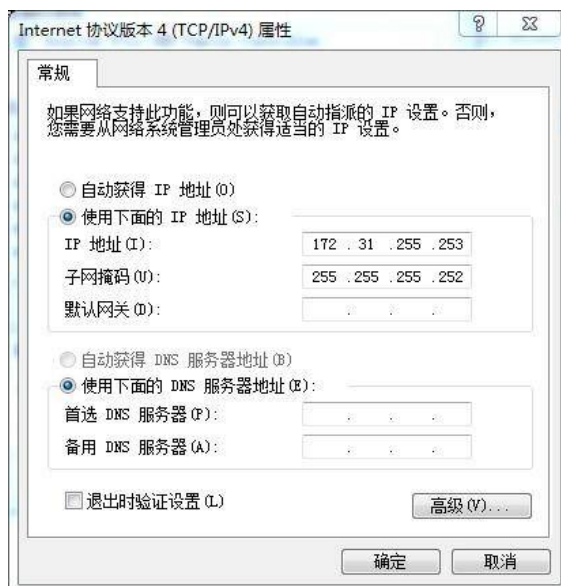
The LG01 has a fall-back ip in its LAN port. This IP is always enabled so user can use fall back ip to access LG01 no matter what the WiFi IP is. The fall back ip is useful for connect and debug the unit.

(Note: fallback ip can be disabled in the LAN and DHCP page)

Steps to connect via fall back IP:

1. Connect PC's Ethernet port to LG01's LAN port
2. Configure PC's Ethernet port has IP: 172.31.255.253 and netmask: 255.255.255.252

As below photo:



3. In PC, use 172.31.255.254 to access LG01 via Web or Console.

13.7 See GPIO20 issue when uploading.

The error shows:

```
"Sketch uses 11574 bytes (35%) of program storage space. Maximum is 32256 bytes.
Global variables use 834 bytes (40%) of dynamic memory, leaving 1214 bytes for local variables.
Maximum is 2048 bytes.
Can't export GPIO 20, already exported/busy?: Device or resource busy
avrdude done. Thank you."
```

This happen when you use Linux machine to compile and upload the sketch, please check your PC settings or change to Windows machine when this happen.

14. Order Info

General Version:

- [LG01P-433](#): LoRa Gateway best tune to 433 MHz.
- [LG01P-868](#): LoRa Gateway best tuned to 868 MHz.
- [LG01P-915](#): LoRa Gateway best tuned to 915 MHz

Screw Terminal Version:

- [LG01S-433](#): LoRa Gateway best tune to 433 MHz.
- [LG01S-868](#): LoRa Gateway best tuned to 868 MHz.
- [LG01S-915](#): LoRa Gateway best tuned to 915 MHz.

Outdoor Version:

- [OLG01-433](#): LoRa Gateway best tune to 433 MHz.
- [OLG01-868](#): LoRa Gateway best tuned to 868 MHz.
- [OLG01-915](#): LoRa Gateway best tuned to 915 MHz.

15. Packing Info

Package Includes:

- ✓ LG01P or LG01S LoRa Gateway x 1
- ✓ Stick Antenna for LoRa RF part. Frequency is one of 433 or 868 or 915Mhz depends the model ordered
- ✓ Power Adapter: EU/AU/US type power adapter depends on country to be used
- ✓ Packaging with environmental protection paper box

Dimension and weight:

- ✓ Device Size: 12 x 8.5 x 3 cm
- ✓ Device Weight: 150g
- ✓ Package Size / pcs : 21.5 x 10 x 5 cm
- ✓ Weight / pcs : 360g
- ✓ Carton dimension: 45 x 31 x 34 cm. 36pcs per carton
- ✓ Weight / carton : 12.5 kg

16. Support

- Try to see if your questions already answered in the [wiki](#).
- Support is provided Monday to Friday, from 09:00 to 18:00 GMT+8. Due to different timezones we cannot offer live support. However, your questions will be answered as soon as possible in the before-mentioned schedule.
- Provide as much information as possible regarding your enquiry (product models, accurately describe your problem and steps to replicate it etc) and send a mail to

support@dragino.com

17. Reference

- ✧ LG01 LoRa Gateway official wiki
- ✧ [More examples for LG01 LoRa Gateway](#)
- ✧ Source code for LG01 LoRa Gateway
<https://github.com/dragino/openwrt-cc-15.05>
- ✧ OpenWrt official Wiki
<http://www.openwrt.org/>
- ✧ Arduino Official Site:
<https://www.arduino.cc>
- ✧ Arduino bridge examples:
<https://www.arduino.cc/en/Tutorial/Bridge>
- ✧ Hardware Source Code:
The LG01 includes two parts of hardware:
 - ✓ MS14N Linux Mother Board:
<https://github.com/dragino/motherboard-hardware/tree/master/ms14n>
 - ✓ LoRa Daughter Board LoRa G:
<https://github.com/dragino/Lora/tree/master/LoRa%20G/v1.3>