

EtherNet/IP Activation Process for the ioLogik E1200 Series

The ioLogik E1200 series supports the EtherNet/IP protocol once the device has been registered and activated. In this note, we will explain how to activate the EtherNet/IP function in the ioLogik E1200 series. Please remember that the EtherNet/IP function can only be activated with the following firmware and utility versions.

- ioLogik E1210 V2.5 and later versions (std. version)
- ioLogik E1211 V2.4 and later versions (std. version)
- ioLogik E1212 V2.5 and later versions (std. version)
- ioLogik E1213 V2.6 and later versions (std. version)
- ioLogik E1214 V2.5 and later versions (std. version)
- ioLogik E1240 V2.4 and later versions (std. version)
- ioLogik E1241 V2.5 and later versions (std. version)
- ioLogik E1242 V2.5 and later versions (std. version)
- ioLogik E1260 V2.5 and later versions (std. version)
- ioLogik E1262 V2.5 and later versions (std. version)
- ioSearch V1.15 and later versions (std. version)

Note:

1. When updating firmware version V3.0 or higher, use ioSearch V2.0 or higher version to upgrade.
2. To avoid system failure while updating the firmware, follow the instructions given in Appendix I in ioLogik E1200 series user's manual.

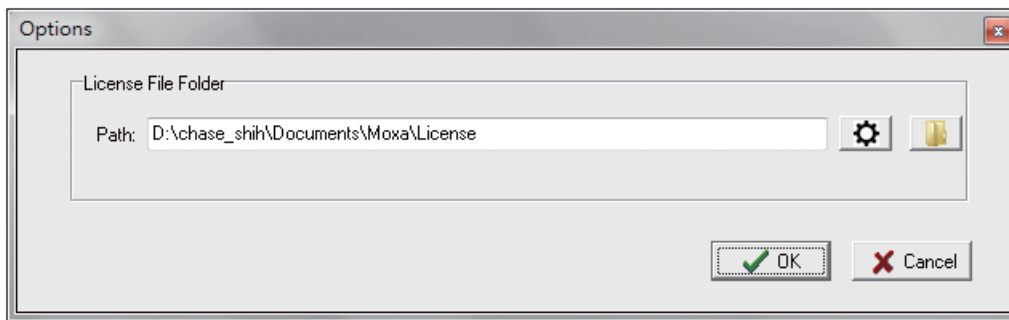
Technical Note

Take the following steps to activate the EtherNet/IP function:

Step 1: Assign the license file folder

After installing ioSearch V1.15, the user should assign a folder to place the license file in. Click **System** → **Options** to find the window displayed below. Next, click the settings icon (shown at the right) to assign the license folder. Click **OK** to complete the settings.

Settings Icon



Step 2: Get the device's serial number

Before you start the registration process, locate the serial number on the ioLogik E1200 device. The device's serial number can be found on the device label, as shown in the picture below.




Step 3: Log in to Moxa's license server

Moxa's licensing server can be accessed at the following link: <http://license.moxa.com>. Input the ID and Password to log in to the system. Click the **Apply for an account** button to register an account before you login for the first time.

MOXA[®] | Software Licensing

Manage Your Software License

Login Moxa Software Licensing System to activate or query your Moxa software license.



© 2015 Moxa Inc. All rights reserved.

User ID

Password

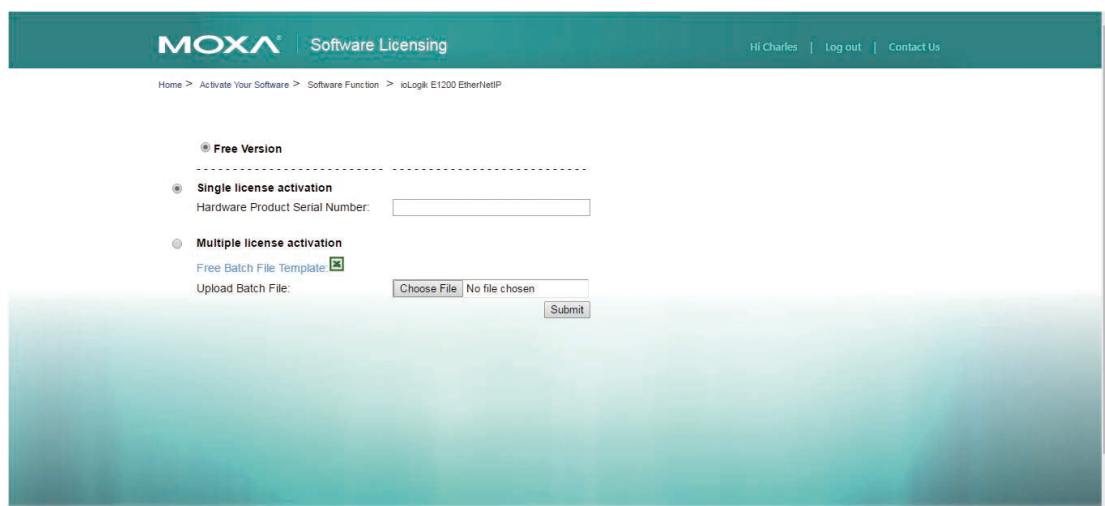
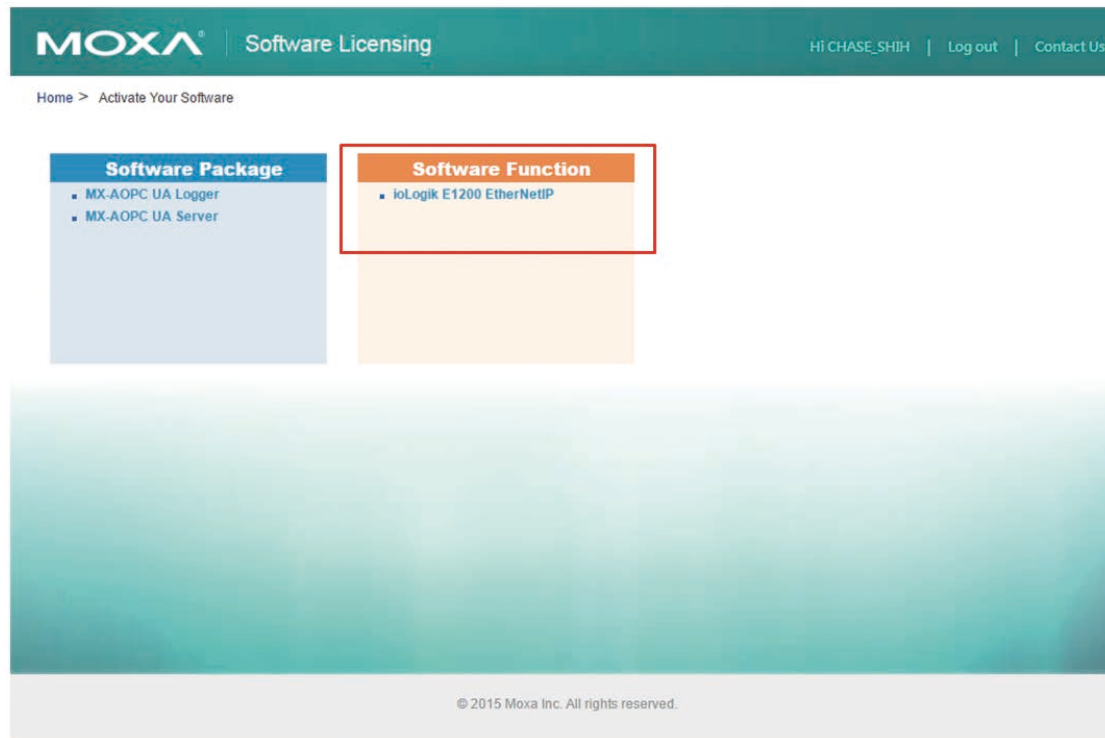
[Forgot your password?](#)

Login

Apply for an account

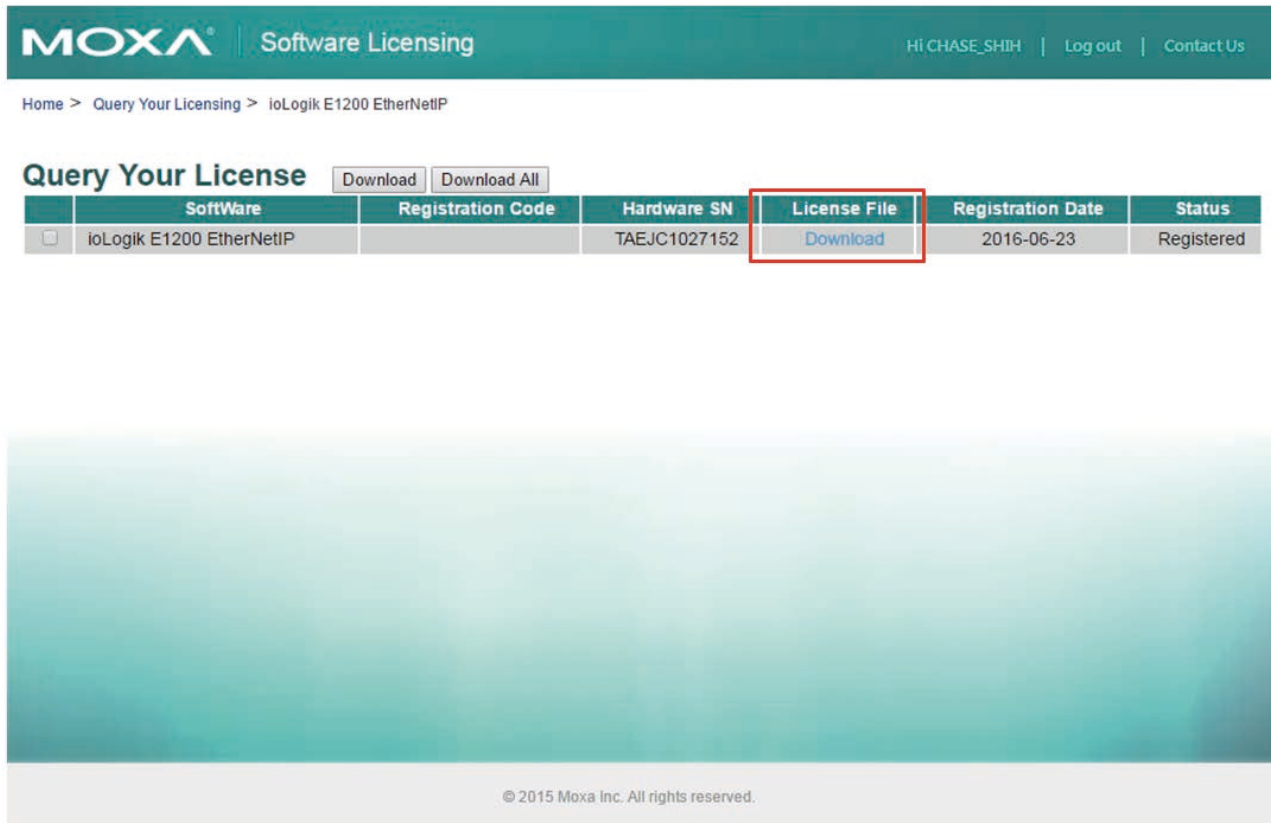
Step 4: Register the device on the Moxa Licensing Server

Click the **ioLogik E1200 EtherNet/IP** link to go to the registration page. The Moxa Licensing Server provides two ways to complete the registration process. To register a single product, simply input the serial number. To register multiple products, you will need to input serial numbers in a special format. The template for multiple device activation can be downloaded below.



Step 5: Download the license file and put it in the designated folder

After inputting the serial number, click the **Submit** button. The system will provide a link that you can click to download the license file. Save the downloaded file in the folder that was assigned in step 1, and unzip the file.



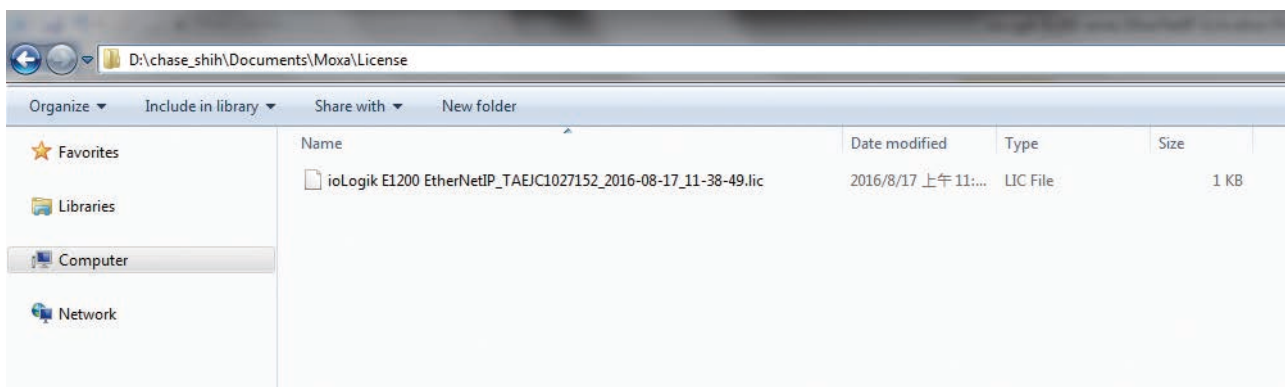
MOXA | Software Licensing Hi CHASE_SHIH | Log out | Contact Us

Home > Query Your Licensing > ioLogik E1200 EtherNet/IP

Query Your License Download Download All

	SoftWare	Registration Code	Hardware SN	License File	Registration Date	Status
<input type="checkbox"/>	ioLogik E1200 EtherNet/IP		TAEJC1027152	Download	2016-06-23	Registered

© 2015 Moxa Inc. All rights reserved.



D:\chase_shih\Documents\Moxa\License

Organize ▾ Include in library ▾ Share with ▾ New folder

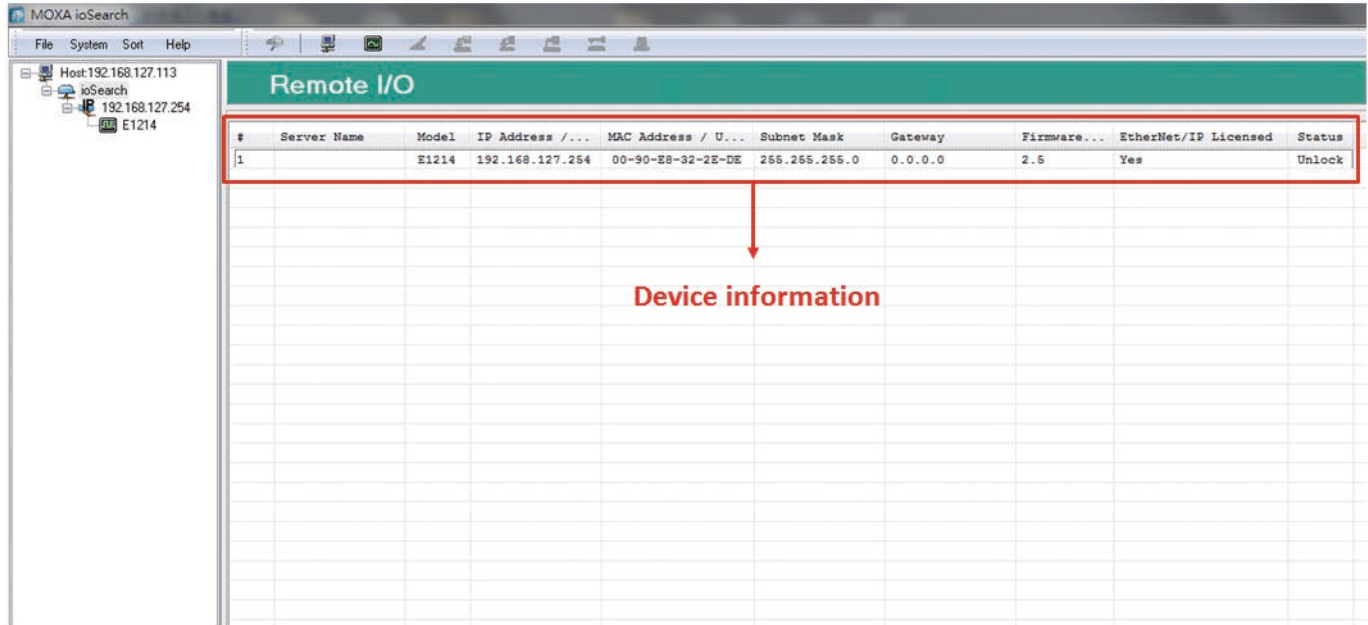
Name	Date modified	Type	Size
ioLogik E1200 EtherNetIP_TAEJC1027152_2016-08-17_11-38-49.lic	2016/8/17 上午 11:...	LIC File	1 KB

Computer Network

Technical Note

Step 6: Use ioSearch to scan the devices on the network

Connect the ioLogik E1200 devices to the computer and use ioSearch to search for the correct device. Device information will be displayed in the window.



#	Server Name	Model	IP Address / ...	MAC Address / U...	Subnet Mask	Gateway	Firmware...	EtherNet/IP Licensed	Status
1		E1214	192.168.127.254	00-90-E8-32-2E-DE	255.255.255.0	0.0.0.0	2.5	Yes	Unlock

Device information

Technical Note

Step 7: Activate the EtherNet/IP function in the ioLogik E1200 series

Right click on the device and select Activate EtherNet/IP. The progress of the activation process can be viewed and ioSearch will inform you when the activation has finished.

