

RS232/RS485 TO RJ45&WIFI CONVERT SERVER

(USR-WIFI232-630)

File version: Ver1.0.4



Content

RS232/RS485 TO RJ45&WIFI CONVERT SERVER.....	1
1. Quick Start.....	4
1.1. Hardware connect.....	4
1.2. Network connection.....	4
1.3. Communication test.....	6
2. Introduction.....	7
2.1. Short Description.....	7
2.2. Device Features.....	7
2.3. Electronic Parameters.....	7
2.4. Packing Information.....	8
3. Hardware.....	9
3.1. Appearance size chart.....	9
3.2. Indicator Light.....	9
3.3. Interface Instructions.....	9
4. Application.....	11
4.1. Application of AP.....	11
4.2. Application of STA.....	11
4.3. Application of AP+STA.....	12
4.4. Wired and wireless Application drawing.....	13
4.5. Ethernet bridge connection(WIFI works in AP mode).....	15
4.6. Wireless bridge connection(AP+STA).....	16
5. Function Description.....	17
5.1. User configuration process.....	17
5.2. Working mode.....	17
5.2.1. Transparent Transmission Mode.....	17
5.2.2. Serial command mode.....	18
5.2.3. HTTPD Client mode.....	19
5.2.4. Modbus TCP <=> Modbus RTU mode.....	20
5.3. WI-FI parameter setting.....	20
5.3.1. Auto- Frequency Function.....	20
5.3.2. Security.....	20
5.3.3. Search Function for STA.....	21
5.3.4. Address Binding.....	22
5.4. UART Frame Scheme.....	22
5.4.1. UART Free-Frame.....	22
5.4.2. UART Auto-Frame.....	23
5.5. Network Setting.....	23
5.5.1. Socket A.....	23
5.5.2. Socket B.....	24
5.6. New function.....	24

5.6.1. TCP password authentication.....	24
5.6.2. Upload ID.....	24
5.6.3. Synchronnize Baudrate.....	25
5.6.4. Keepalive.....	25
5.6.5. Multiple STA parameters.....	25
5.6.6. Websocket.....	26
5.6.7. Software flow control.....	26
5.6.8. Domain backup and Smart Station mode.....	26
5.7. Palmodic Signal.....	27
5.8. Parameters Configuration.....	27
5.9. Firmware Upgrade.....	27
6. setup process.....	28
6.1. Configuration via Web Accessing.....	28
6.1.1. Open Web Management Interface.....	28
6.1.2. Quick Configure.....	29
6.1.3. Mode Selection Page.....	29
6.1.4. AP Interface Setting Page.....	30
6.1.5. STA Interface Setting Page.....	30
6.1.6. Application Setting Page.....	31
6.1.7. Ethernet Setting.....	33
6.1.8. HTTPD Client Mode.....	33
6.1.9. Device Management Page.....	34
Appendix A: Questions and Answers.....	36
Q1: How to configure transparent serial port application (TCP protocol) with two Convert Servers?.....	36
Q2: Where to Set WIFI Convert Server LAN IP and WAN IP through Web Page?	37
Q3: How to configure transparent serial port application (UDP protocol) with two Convert Servers?.....	37
Q4: Where to set Convert Server network protocol (TCP/UDP)?.....	38
Q5: How to configure transparent serial port application: Two Convert Servers all configured as STA and connection through AP?.....	39
Q6: How to avoid IP address confliction when apply Convert Server?.....	40
Q7: PC works as server, all Convert Servers works as data acquisition card and connect with PC, how to configure this application?.....	40
Q8: Convert Server support UDP multicast?.....	42
Q9:Convert Server operates in STA mode, the PC how to get the IP Convert Server?.....	42
Q10:Servers use wireless switch.....	43
Appendix B: Contact.....	44
Appendix C: Disclaimer.....	44
Appendix D: Update History.....	45

1. Quick Start

This chapter is the quick start for Convert Server. proposal user read this chapter and follow the instructions. This will help your understanding of the product. Of course, the user can choose read chapters according to need. For specific details and instructions, please refer to the following.

If there are problems in using the process, you can refer to the official website of our application case:

<http://www.usriot.com/Faq/cat-47.html>

We can also submit the issue to our customer support center:

<http://h.usriot.com>

1.1. Hardware connect

In order to test the serial port to the WIFI/ Ethernet communication transformation, connect the the device serial port to PC serial port, connect the device WIFI/Ethernet to PC WIFI/Ethernet. If the desktop does not own the serial port, also can use USB 232 to replace. The hardware environment.

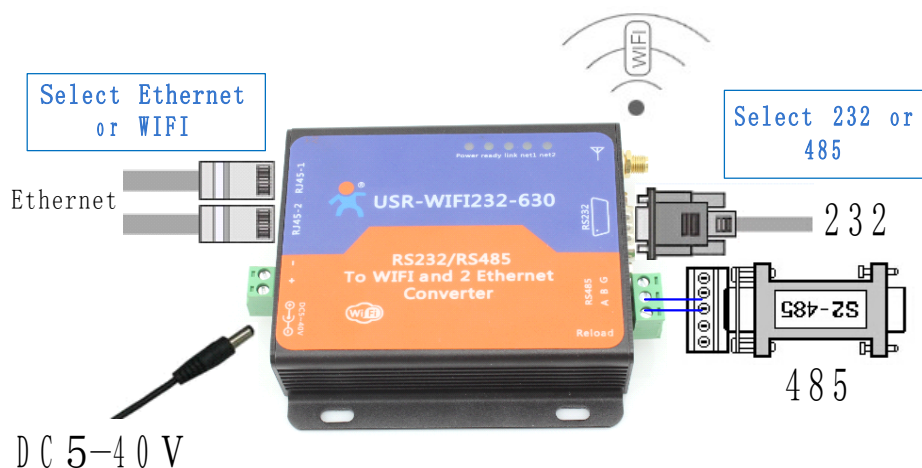


Figure 1 Hardware Connect

According to the above connect Convert Server.

1.2. Network connection

Open Wi-Fi, search network on the PC, as shown in below, USR-WIFI232-630_3378 is the default network name (SSID) of the Convert Server.

Front "USR-WIFI232-630_" is the collective name for all Convert Server, the latter four is the latter four of Convert Server's MAC address.

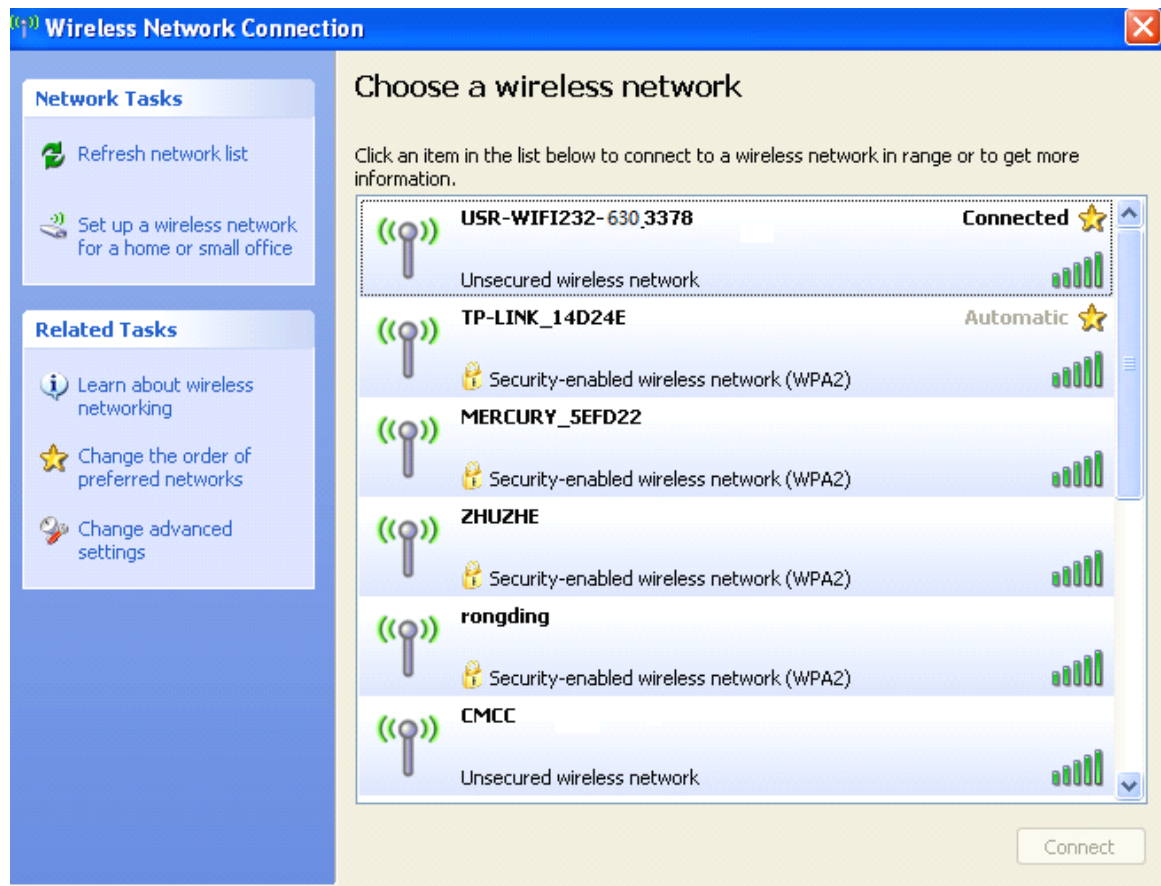


Figure 2 WIFI Search

Join the network, choose to automatically obtain IP, Convert Server supports DHCP Server feature and is enabled by default.

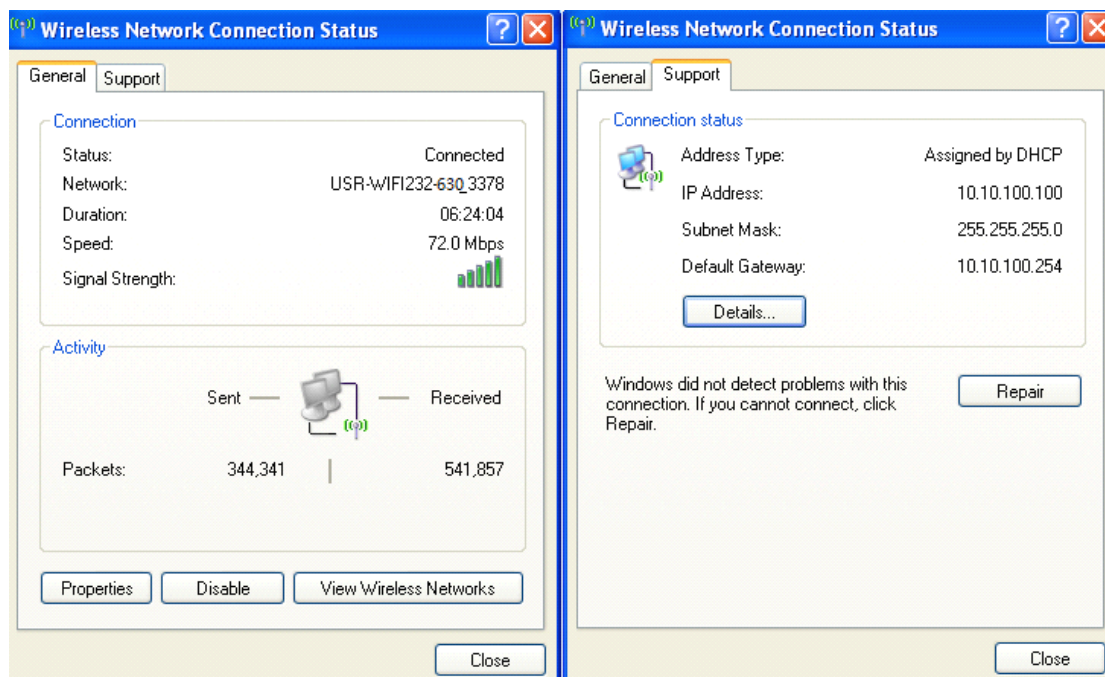


Figure 3 WIFI connection

Now, link led of Convert Server is lighting.

1.3. Communication test

Convert Server' s default setting:

- **SSID:**USR-WIFI232-630_XXXX(XXXX is the last of mac address);
- **Encryption mode:**open, none;
- **UART:**57600,8,1,None;
- **Network parameters:** TCP,Server,8899,10.10.100.254;
- **IP:**10.10.100.254;

We just need to follow the parameters of the corresponding set of network communication parameters, you can make serial <--> WIFI or Ethernet communication, the steps are as follows:

1. Open test software USR-TCP232-Test;
2. COM Settings area (left):

Choose COM port which has connect the Convert Server, there is COM3, choose band rate to 57600, this is the default band rate of Convert Server, Click Open COM port.

3. Net Settings area (right):

Choose TCP client mode, Server IP write 10.10.100.254, it is the WIFI default IP address, Server port to 8899, It is the default Port the Convert Server listen, Click Connect to link to the Convert Server.

Now, you can test send data between RS232 and WIFI.

COM port to WIFI: PC RS232 -> Convert Server RS232 -> Convert Server WIFI -> PC WIFI.

WIFI to COM port: PC WIFI or Ethernet -> Convert Server WIFI or Ethernet -> Convert Server RS232 -> PC RS232.

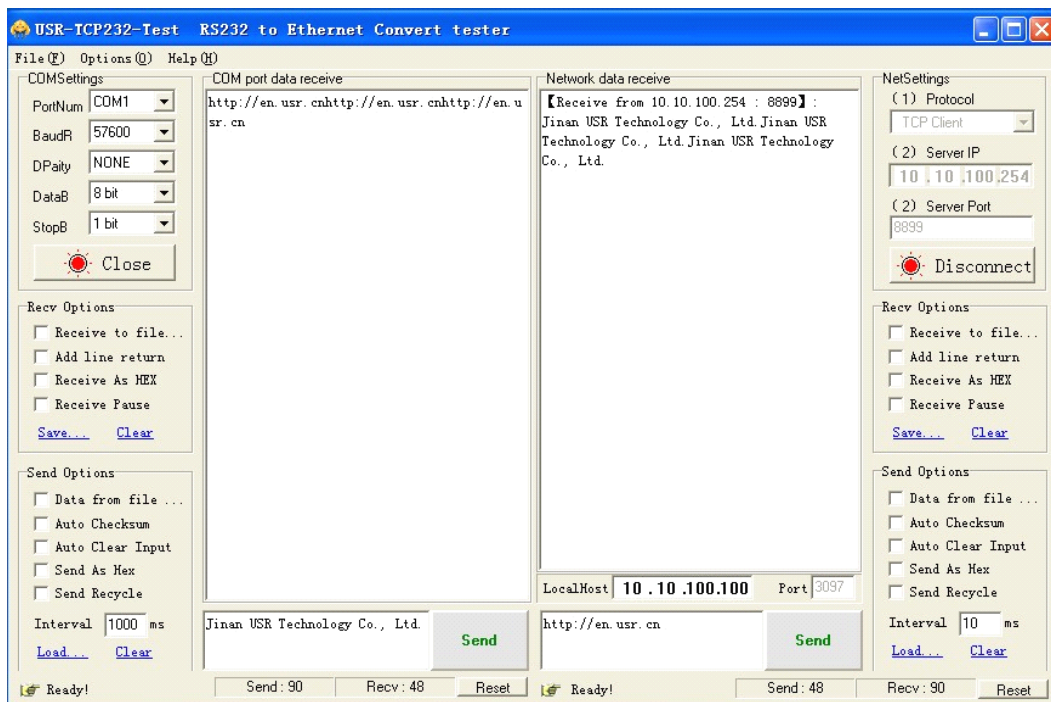


Figure 4 serial / network transmission test

2. Introduction

2.1. Short Description

Convert Server provides a serial port to WIFI function, can be RS-232/485 converted into a TCP/IP serial network interface, RS-232/485 serial port and WIFI/ Ethernet bidirectional data transparent transmission. The serial device can immediately with the TCP/IP network interface functions, connect to the network for data communication, communication range extended serial device greatly.

2.2. Device Features

- Inner board core module specifications, please reference to USR-WIFI232-D2
- Support hardware flow control (RTS/CTS) RS232 interface, male mouth (needle) consistent with computer pin definition
- RS232/RS485 automatic switching
- RJ45 network connection, support wired Ethernet transmission
- Reload button, do not worry incorrect settings (in working status, press the button 3s then it load to default settings and automatic restart)
- Rich status indicator light: Power/Ready/Link/NET1/NET2
- Pin 9 of the DB9 can be connected to power input (solder jumper on the back of PCB), used for power the sensor or the serial port cable power Convert Server.
- Design with positioning hole, convenient installation
- Highest support baud rate 460800 bps
- optional TCP Server/TCP Client/UDP Client/ UDP Server mode, the TCP Server mode can support up to 32 Client connection

2.3. Electronic Parameters

Table 1 Electrical parameter

	Item	Parameter
Wireless parameter	Certification	FCC/CE
	Wireless standard	802.11 b/g/n
	Frequency range	2.412GHz-2.484GHz
	Transmit power	802.11b: +20dBm(Max.)
		802.11g: +18dBm(Max.)
		802.11n: +15dBm(Max.)

		configurable
	Receiver Sensitivity	802.11b: -89dBm
		802.11g: -81dBm
		802.11n: -71dBm
	Antenna Option	External 3Dbi antenna
Hardware Parameters	Data Interface	UART: 1200bps - 460800bps
		Ethernet: 100Mbps
		GPIOs
	Operating voltage	5-40V (+/-5%)
	Operating temperature	-40℃- 85℃
	Storage temperature	-40℃- 125℃
	Dimensions	103×105×28mm
Software parameters	Network type	Station/AP mode, STA+AP
	Security mechanisms	WEP/WPA-PSK/WPA2-PSK
	Encryption	WEP64/WEP128/TKIP/AES
	Work mode	Transparent Transmission
	Serial command	AT+instruction set
	Network Protocol	TCP/UDP/ARP/ICMP/DHCP/DNS/HTTP
	Max. TCP Connection	32
	User Configuration	Web Server+AT command config
	User Application SW	Support customized application software

2.4. Packing Information

- ◆ Convert Server *1
- ◆ 5V1A power adapter *1
- ◆ Serial cable *1
- ◆ Network cable *1

3. Hardware

3.1. Appearance size chart

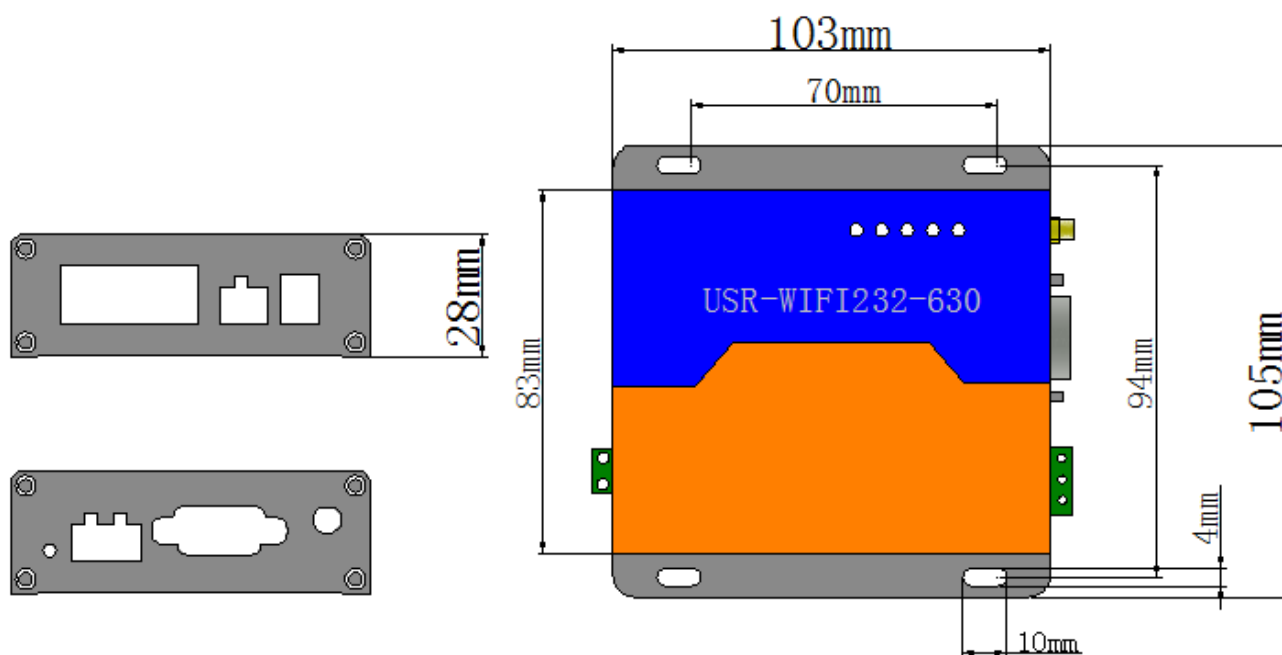


Figure 5 Appearance size chart(602/604/610)

3.2. Indicator Light

There are 5 lights in total, from left to right

Table 2 Indicator light

Indicator	Function	Description
Power	power	Keep light when power on
Ready	Inner LINUX start	Keep green light when connected to network correctly
Link	Network link	Light when establish network link
NET1	Indicator light of 1RJ45	Flash when Data interaction of 1RJ45
NET2	Indicator light of 2RJ45	Flash when Data interaction of 2RJ45

3.3. Interface Instructions

Power interface:

5.5*2.1 standard 5-40v power interface, with TVS protection

RS232 interface:

Device serial port is male(needle), RS232 level (can connect to PC directly), pin order is consistent with PC COM port. Use cross cable connected with PC(2-3cross,7-8cross, 5-5 direct, 7-8 can disconnect, but MUST NOT connect with PC directly), There are 6 pins in work, others is NC.

Table 3 RS232 Pins

ID	NAME	DESCRIPTION
2	RXD	Receive data pin
3	TXD	Send data pin
5	GND	Data Ground
7	RTS	Request to send
8	CTS	Clear to send
9	VCC	Can connect to Convert Server power input by join the PCB jumper, default not connect.

RS485 interface:

RS485 two wire links, A(DATA+), B(DATA-), when link to other RS485 device, A(+) to A(+), B(-) to B(-).

RJ45 interface:

Network port connection, Convert Server is 10M/100M adaptive, support AUTO MDI/MDIX, which means you can use direct network cable to connect with PC also can be tested. Convert Server by default open, as shown in the Convert Server specifications.

Table 4 RJ45 Pins

ID	TAB	FUNCTION
1	TX+	Transceiver Data+
2	TX-	Transceiver Data-
3	RX+	Receive Data+
4	PHY-VCC	Transformer tap voltage
5	PHY-VCC	Transformer tap voltage
6	RX-	Receive Data-
7	n/c	Not connected
8	n/c	Not connected

Reload key:

This key used for set up the Convert Server to factory setting, when Convert Server is working (Ready LED on), press this key more than 3 seconds and free it, wait about 10 seconds until the Convert Server restart, the green LEDs all off and then Ready LED on. Then the Convert Server goes to factory default settings.

4. Application

4.1. Application of AP



Figure 6 Application of AP

As shown in figure in, Convert Server used as an AP, all the other Convert Servers and computer can be used as the STA to connect this Convert Server, at the same time it also can through the UART or GPIO interface to the user equipment.

4.2. Application of STA

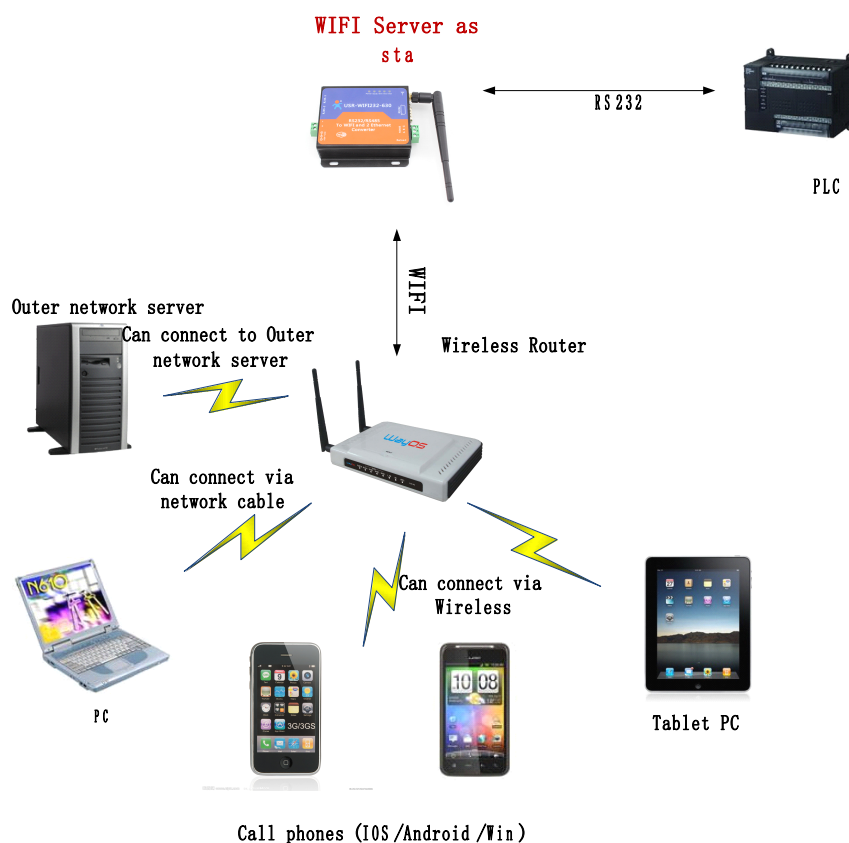


Figure 7 Application of STA

Convert Server as STA(use the AP CLI interface), connect to other AP, to compose a wireless network. All of the STA take AP as the wireless network center, and the mutual communication between STA is through AP forwarding.

4.3. Application of AP+STA

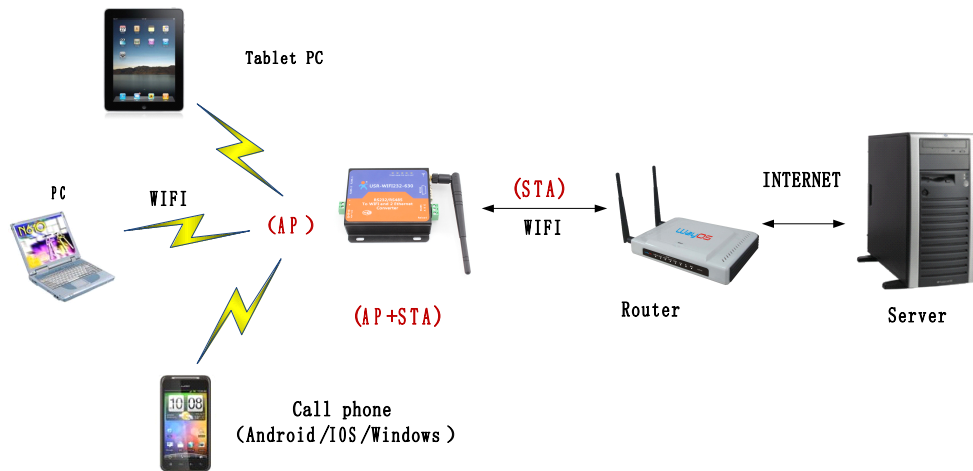


Figure 8 Application of AP+STA

Convert Server can support AP+STA mode. That is the Convert Server support a AP interface and a STA interface at the same time.

AP+STA function settings:

AP+STA function need to set through serial command.

AT+FAPSTA=on set AP+STA function

Then set Convert Server to STA mode, the AP interface still valid.

Note: the AT command part of this article is no longer in detail, please click the high-performance series Convert Server specification.

4.4. Wired and wireless Application drawing

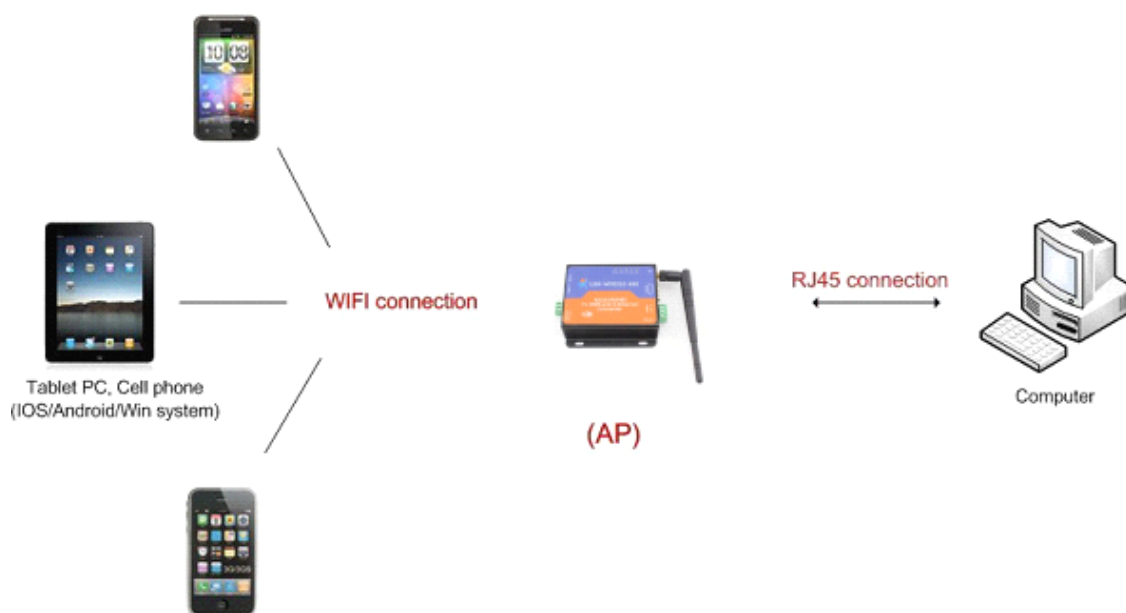


Figure 9 Wired and wireless Application drawing 1

When USR-WIFI232-630 used as AP, other computers and equipments can be used as STA connected to this device through RJ45(network cable).

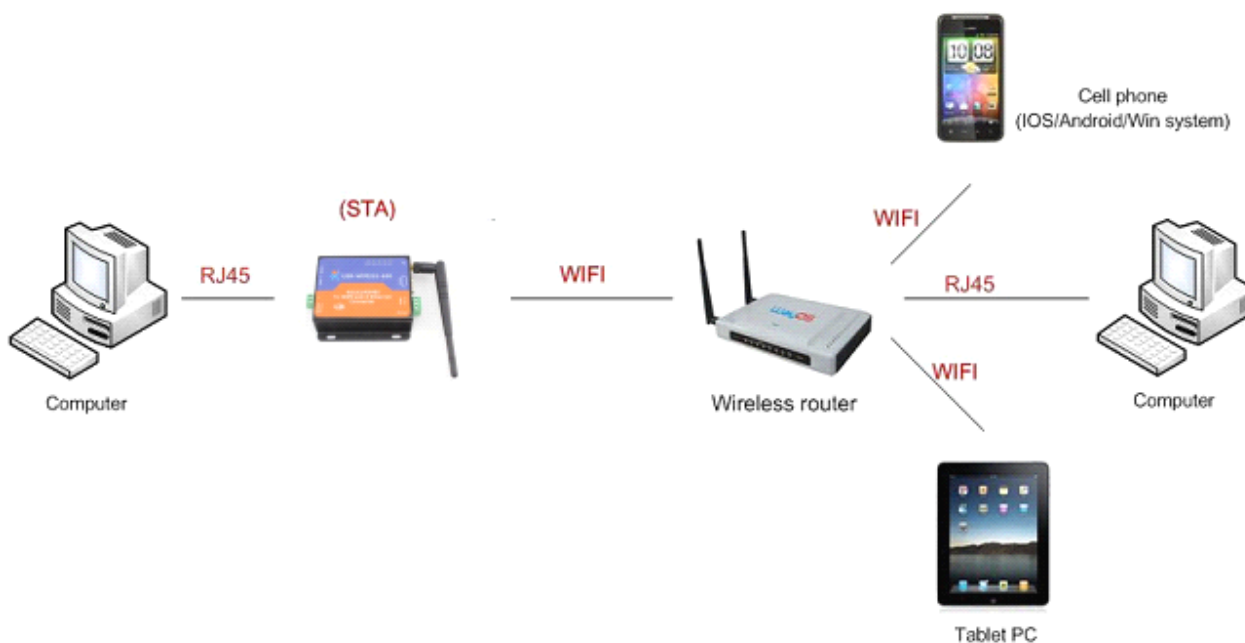


Figure 10 Wired and wireless Application drawing 2

When USR-WIFI232-630 used as STA, network port connected to computer via RJ45, wireless added to wireless router to networking.

4.5. Ethernet bridge connection(WIFI works in AP mode)

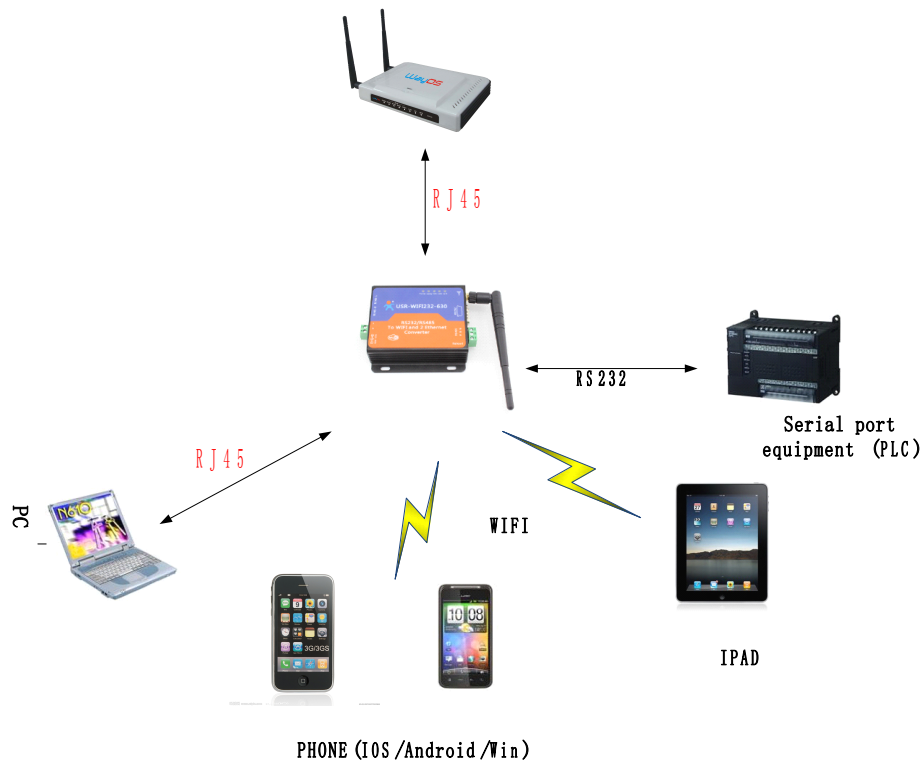


Figure 11 Ethernet bridge connection

USR-WIFI232-630 wireless configured for AP mode, Turn off the DHCP server of module, And IP will revise the router with a network segment (in the page of "AP Interface Setting" there is a corresponding option) After the completion of installation, 2RJ45 of serial server connected to the router, 1RJ45 of serial server connected computer. So, computer, serial server, router in the same network. Serial server is equivalent to a switch bridge router and computer.

Which uses the AT command includes the following:

- AT+WAP Set to the router SSID
- AT+WKEY Set to the router password
- AT+LANN Set the ip of itself with routers in the same segment IP
- AT+DHCPDEN=off Turn off the serial port server DHCP function

Application and setting process with AT instructions, please refer to the specific document "USR-WIFI232-D2_en" AT instruction section.

4.6. Wireless bridge connection(AP+STA)

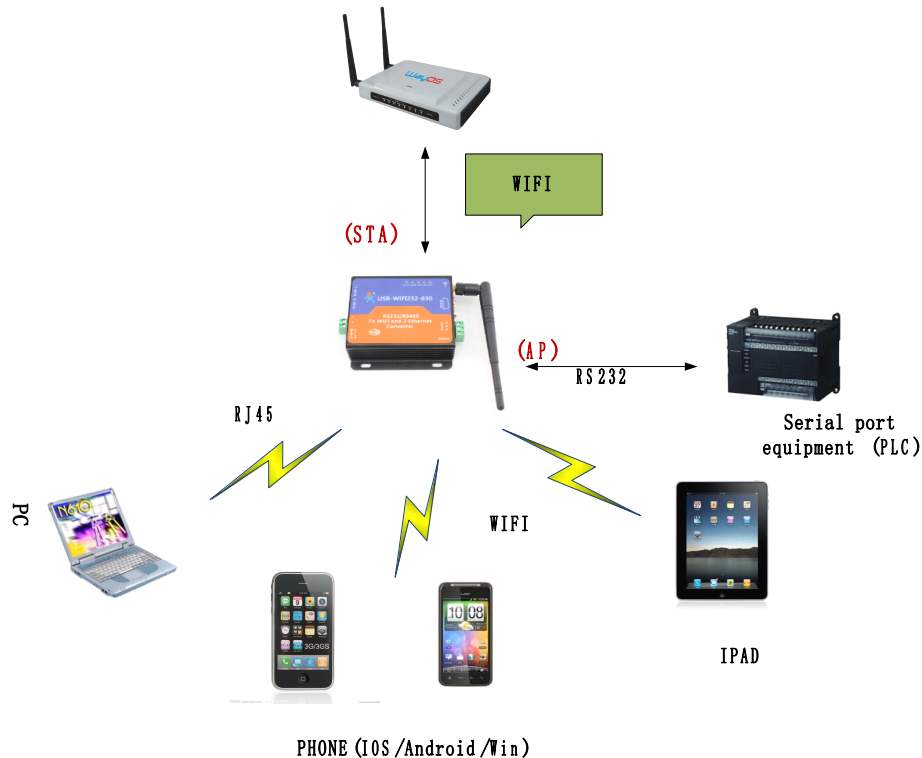


Figure 12 Wireless bridge connection

USR-WIFI232-630 wireless configured for AP+STA mode, turn off the DHCP server of module, and IP will revise the router with a network segment (in the page of "AP Interface Setting" there is a corresponding option). After the completion of installation, AP SSID and password to the router's, and let the module sta mode join to the router. This server is equivalent to a wireless switch bridged to the router, achieves to extend the coverage of the wireless router.

Which uses the AT command includes the following:

- AT+FAPSTA=on Open the AP+STA function, Restore factory settings take effect
- AT+FVER=z Open z mode, Restore factory settings take effect
- AT+WMODE=STA Set the work mode to STA mode
- AT+WSSID Set to the router SSID for STA mode
- AT+WSKEY Set to the router password for STA mode
- AT+WAP Set to the router SSID for AP mode
- AT+WAKEY Set to the router password for AP mode
- AT+LANN Set the ip of itself with routers in the same segment IP
- AT+DHCPDEN=off Turn off the serial port server DHCP function

Application and setting process with AT instructions, please refer to the specific document "USR-WIFI232-D2_en" AT instruction section

5. Function Description

5.1. User configuration process

After Convert Server start up, based on user pre-set parameters, automatically connect to wireless networks and servers, and enter the working mode is set to open in accordance with the default serial port parameters.

The parameters which need to configure include:

- Wireless Network Parameters
 - ✧ Wireless Network Name (SSID)
 - ✧ Security Mode
 - ✧ Encryption Key
- TCP/UDP Linking Parameters
 - ✧ Protocol Type
 - ✧ Link Type (Server or Client)
 - ✧ Target Port ID Number
 - ✧ Target Port IP Address
- Serial Port Parameters
 - ✧ Baud Rate
 - ✧ Data Bit
 - ✧ Parity (Check) Bit
 - ✧ Stop Bit
 - ✧ Hardware Flow Control
- Work Mode Selection
 - ✧ Transparent transmission/Serial command mode/GPIO mode/HTTPD Client mode

The following sections will introduce specific to each part in detail.

5.2. Working mode

5.2.1. Transparent Transmission Mode

Convert Server support serial interface transparent transmission mode. The benefit of this mode is achieves a plug and play serial data port, and reduces user complexity furthest. In this mode, user should only configure the necessary parameters. After power on, Convert Server can automatically connect to the default wireless network and server.

As in this mode, the Convert Server's serial port always work in the transparent transmission mode, so users only need to think of it as a virtual serial cable, and send and receive data as using a simple serial. In other words, the serial cable of users' original serial devices is directly replaced with the Convert Server; user devices can be easy for wireless data transmission without any changes.

The transparent transmission mode can fully compatible with user's original software platform and reduce the software development effort for integrate wireless data transmission.

Notes: Users also open the serial port hardware flow control (CTS/RTS) function, so that we can make the bit error rate to a minimum. If the user doesn't need hardware flow control function of the serial port, only need to the corresponding pin foot (CTS/RTS) hung up.

5.2.2. Serial command mode

In this mode, the user can send the serial data to a different server address, this pattern can be use UDP or TCP client sends data to the server.

Customer MCU send packets according to the following format, parsing Convert Server is finished, only the n bytes of data sent to the destination address. When data is returned, not analytical data from serial port output directly.

Table 5 Protocol table of Serial command mode

frame header	length	function byte	Backup data area	Destination port	Target address	Data	Sum check
2	2 (n+m+5)	1	2	2	m	n	1

frame header:

0x55 0xAA (Constant)

Length:

Starting from the function byte, to Sum check (does not contain the sum check) all bytes. **High byte at the front**

Function byte:

Bit0: (UDP:0 ;TCP:1)

Bit1: (Short connection:0;Long connection:1)

Bit2: (IP:0;Domain name:1)

Bit7: (cut protocol:0;full protocol:1) **Note: currently only supports cut protocol**

Notes:

- ✧ Bit1: If it is a short connection, it sends data, and then will be disconnected; if it is long connection, it sends data, connection will remain, until the re changing the target address.
- ✧ Bit2: Indicates that the target address is IP or domain name. If it is IP, the target address is 4 bytes; if the domain name, the target address length for the entire domain name string length (the last byte address is '\0', that is the end of the string).
- ✧ Bit7: Under the cut protocol, reply frame contains only data; Under the full protocol, reply frame has

"failed to send", "waiting for", "UDP radio response equipment IP" frame data.

Backup data area:

- ✧ First byte: If it is a short connection, this position is TCP waits for the timeout time (1-255), if the send command is completed, did not receive a response, then wait a few seconds and the corresponding, if 5, said to wait for the 5S to disconnect; if the sending command, immediately receive the returned data, then immediately disconnected; if it is long connection, this position is 0x00.
- ✧ Second byte: Reserve

Destination port:

Little endian, low byte in the former, such as port 23, here are 0x17 0x00

Target address:

If it is IP, is 4 bytes, for example, 192.168.0.7 said 0x07 0x00 0xA8 0xC0; if it is a domain name, then the address of indefinite length, ending with the '\0'.

Data:

Variable length, the maximum not exceeding 1000 bytes.

Sum check:

From the function word to check byte (does not contain a check byte), add Sum check.

The following is an example of a specific application:

send data: 0x55 0xaa 0x00 0x0a 0x00 0x00 0x00 0x21 0x00 0x85 0x00 0xA8 0xC0 0x01 0x0f

Length: 0x00 0x0a

Function byte: 0x00 (UDP; Short connection; IP; cut protocol)

Destination port: 0x21 0x00 (33)

Target address: 0x85 0x00 0xA8 0xC0 (192.168.0.133)

Data: 0x01 (data length : 1)

Sum check: 0x0f (0x00+0x00+0x00+0x21+0x00+0x85+0x00+0xA8+0xC0+0x01=0x0f)

5.2.3. HTTPD Client mode

This mode is used to send data to the HTTP server.

After setting the HTTP header format by webpage or AT command, the data sent each time by UART will add the HTTP header automatically. Convenient for the user directly submit data or read data from the HTTP server.

Below is the specific application, for example:

The first set HTTP parameters using AT instructions.

AT+HTTPURL=192.168.1.1,80

The server address and port settings

AT+HTTPTP=POST

Set the HTTP type, GET, PUT or POST

AT+HTTPPH=/set

Set the path, the most is 50 bytes

AT+HTTPCN=keep-alive

Set the Connection, maximum length of 20 bytes

AT+HTTPUA=lwip1.3.2

Set the User-Agent, maximum length of

20 bytes

If the sending data is 1234. In the 80 port of 192.168.1.1 will receive the following data

POST /set HTTP /1.1

Connection: keep-alive

User-Agent:lwip1.3.2
 Content-Length:4
 Host:192.168.1.1:80

1234

If the HTTP type is GET, the 80 port 192.168.1.1 receive data

POST /set1234 HTTP /1.1

Connection:keep-alive

User-Agent:lwip1.3.2

Content-Length:0

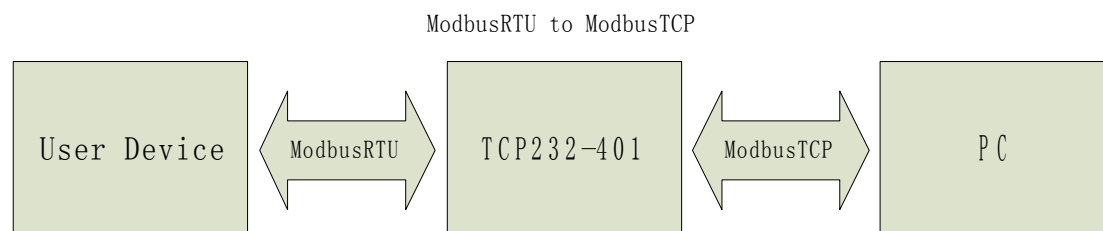
Host:192.168.1.1:80

Data received from server will be directly sent to the serial port,without any treatment.

5.2.4. Modbus TCP <=> Modbus RTU mode

This feature is based on V5.01.18 or above.

This module supports Modbus TCP to Modbus RTU (does not support MODBUS ASCII); module of network parameters, corresponding to the network parameters of the application software, TCP server corresponding TCP client, and the port to be configured into the same, mode select Modbus RTU TCP<=>Modbus (AT commands: AT+TMODE=modbus).



5.3. WI-FI parameter setting

5.3.1. Auto- Frequency Function

When Convert Server works as STA, Convert Server will adjust its wireless channel to keep the same channel with associated AP and connect in.

When Convert Server works as AP and Convert Server enable Auto-frequency function, then when Convert Server boot up, it will select the best wireless channel based on surrounding environment.

5.3.2. Security

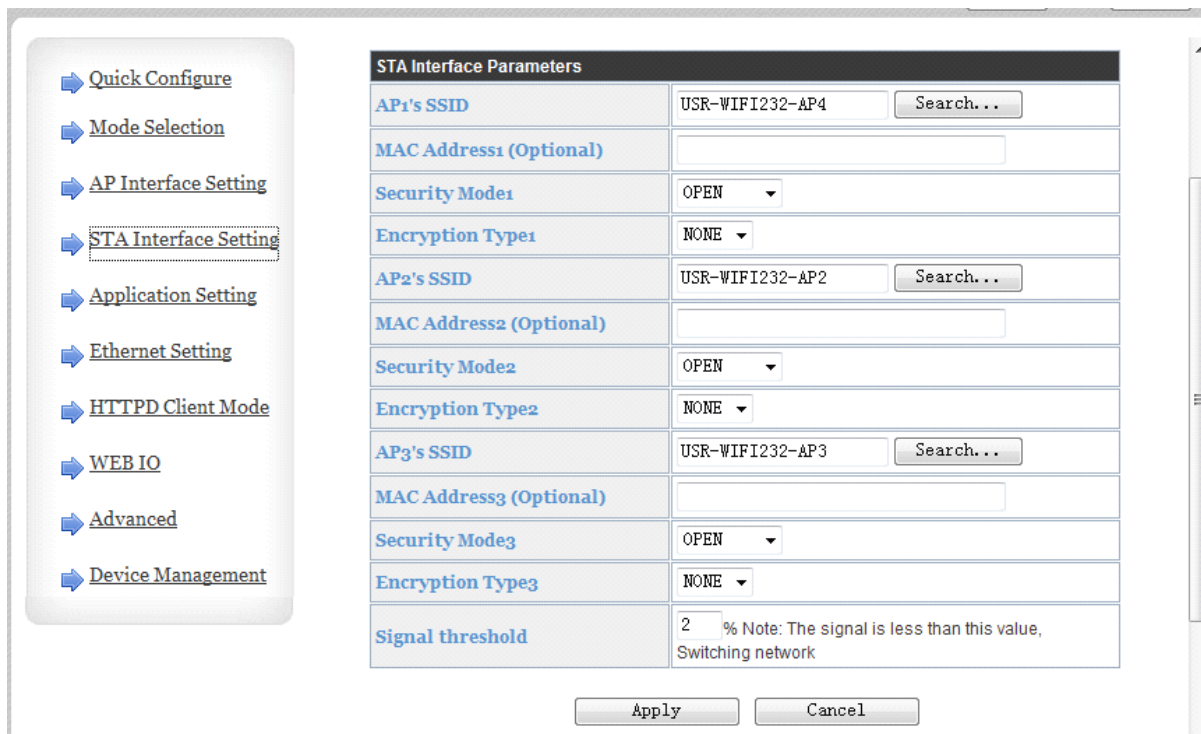
Convert Server supports multiple wireless encryption mechanisms, and enables to protect the security of

user's data transmission, the mechanisms include:

- ◆ WEP
- ◆ WPA-PSK/TKIP
- ◆ WPA-PSK/AES
- ◆ WPA2-PSK/TKIP
- ◆ WPA2-PSK/AES

5.3.3. Search Function for STA

When using web configuration "STA Interface Setting" Page, user can push "Search" button to find surrounding AP, and find a AP to associated.



STA Interface Parameters	
AP1's SSID	USR-WIFI232-AP4 <input type="button" value="Search..."/>
MAC Address1 (Optional)	<input type="text"/>
Security Mode1	OPEN
Encryption Type1	NONE
AP2's SSID	USR-WIFI232-AP2 <input type="button" value="Search..."/>
MAC Address2 (Optional)	<input type="text"/>
Security Mode2	OPEN
Encryption Type2	NONE
AP3's SSID	USR-WIFI232-AP3 <input type="button" value="Search..."/>
MAC Address3 (Optional)	<input type="text"/>
Security Mode3	OPEN
Encryption Type3	NONE
Signal threshold	2 % Note: The signal is less than this value, Switching network

Figure 13 Search page

This page has three STA settings, you can refer to fill one can also fill multiple, if fill in multiple, when connecting the current network signal is less than critical value when the signal, automatically switch to the next STA network (if only to fill a, please fill out the critical value is 100, otherwise it will the broken network).

Site Survey							
	SSID	BSSID	RSSI	Channel	Encryption	Authentication	Network Type
<input type="radio"/>	LBQ-TEST-WP3	d8:b0:4c:f4:46:8c	100%	1	NONE	OPEN	Infrastructure
<input type="radio"/>	TP-LINK_14D24E724	20:dc:e6:ee:38:9a	65%	6	AES	WPA2PSK	Infrastructure
<input type="radio"/>	Tenda_4FFDE8	c8:3a:35:4f:fd:e8	50%	1	NONE	OPEN	Infrastructure

Figure 14 Router list

5.3.4. Address Binding

Convert Server supports the feature of binding the BSSID address of target network.

According to the provisions of 802.11 protocol, different wireless networks can have a same network name (i.e. SSID / ESSID), but must correspond to a unique BSSID address (i.e. MAC address). Illegal intruders can create a wireless network with the same SSID / ESSID, it will make STAs in the network to join to the illegal AP, thereby and then network leakage happen.

Users can prevent STA from joining to illegal network by binding the BSSID address, to improve wireless network security.

5.4. UART Frame Scheme

5.4.1. UART Free-Frame

Convert Server support UART free-frame function. If user select open this function, Convert Server will check the intervals between any two bytes when receiving UART data. If this interval time exceeds defined value (50ms default), Convert Server will think it as the end of one frame and transfer this free-frame to WiFi port, or Convert Server will receive UART data until 4K bytes, then transfer 4KB frame to WiFi port.

Convert Server's default interval time is 10ms. User can also set this interval to normal (50ms) through AT command. But user have to consider if user MCU can send UART data with 10ms interval ,or the UART data may be divide as fragment.

Through AT command: AT+FUARTTE=fast/normal, user can set the interval time: fast (10ms) and normal (50ms). This command is factory default setting command and AT+RELD can't change its value.

5.4.2. UART Auto-Frame

Convert Server support UART auto-frame function. If user select open this function and setting auto-frame trigger length and auto-frame trigger time parameters, then Convert Server will auto framing the data which received from UART port and transmitting to the network as pre-defined data structure.

- **Auto-frame trigger length:** The fixed data length that Convert Server used to transmitting to the network.
- **Auto-frame trigger time:** After the trigger time, if UART port received data can't reach auto-frame trigger length, then Convert Server will transmitting available data to the network and bypass the auto-frame trigger length condition.

Detailed UART auto-frame function can refer to AT+ instruction set "UARTF/UARTFT/UARTFL" introduction.

5.5. Network Setting

Convert Server has two TCP/UDP Socket: Socket A and Socket B. Serial data written to the Convert Server, will be sent to the Socket A and B simultaneously; TCP/UDP data that Convert Server receives through either Socket A or B, will be sent to the serial port.

Dual Socket through different settings, you can achieve a variety of network interconnect. When the Convert Server shipped open Socket A and Socket B.

5.5.1. Socket A

Socket A has three work mode: TCP Server, TCP Client, UDP client, UDP server. The setting method, please refer to the AT+NETP command instruction.

When Socket A configured as TCP Server, it supports Multi-TCP link connection, and maximum 32 TCP clients permitted to connect to Socket A.

Multi-TCP link connection will work as following structure:

Upstream: All dates from different TCP connection or client will be transmitted to the serial port as a sequence.

Downstream: All data from serial port (user) will be duplicate and broadcast to every TCP connection or client.

Detailed multi-TCP link data transmission structure as following figure:

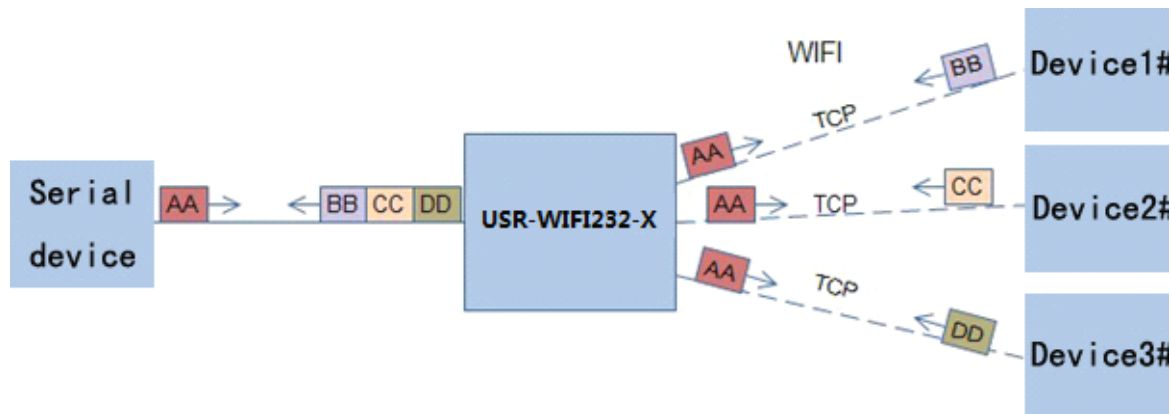


Figure 15 Multi-TCP Link Data Transmission Structure

5.5.2. Socket B

Socket B has one work mode: TCP Client, please refer to the AT + SOCKB command instruction.

With variety work mode, socket B can provide users with flexible data transfer methods. For example, Socket B can connect to a remote server in order to achieve remote control.

5.6. New function

This chapter is based on the function of V5.01D.01 and above, if not this version you can skip this section.

5.6.1. TCP password authentication

This feature is available only on the Convert Server as a TCP server, when the TCP client connection Convert Server, the Convert Server will authenticate each connected tcp.

Each TCP client first data is the "password+0x0d+0x0a" (the password is Webpage authentication password). The default password is "admin", so the first piece of data should be "0x61 0x64 0x6D 0x69 0x6E 0x0D 0x0A" (Hex). If the password is correct, the Convert Server returns "OK", on the other hand, return to the "NO" and disconnect.

The TCP connection of this function can be Webpage in "TCP connection password authentication" is opened or disable.

5.6.2. Upload ID

This function only applies to the Convert Server as a TCP client, in front of the data when Convert Server connected to the server with two bytes of ID (ID the range is 0 ~ 65535, the high byte before, and the low byte behind) plus two bytes ID radix-minus-one complement. Convert Server is the default ID is 1111, for example, is sent to the server when the first four bytes "0x57 0x04 0xfb 0xa8".

There are two ways to upload their own id: one is to upload their own id for connection to the server for the

first time;The other is a plus id in front of each data.

ID number related parameter is set in the "serial port and other Settings" section of the web, build joint function of ID for the first time, and each data with the function of ID are opened by default.

ID can also use the at command to set the related parameters, specific refer to Module specification.

5.6.3. Synchronnize Baudrate

This feature, please cooperate with our company's virtual serial port software use.

Use a serial port connected Convert Server, and use the at command "at + AABR = on" open this function and restart.In the USR - VCOM software "synchronize baudrate (RFC2217 similar)" is selected, the following figure.

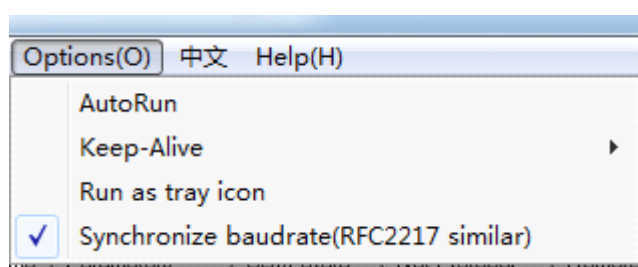


Figure 16 RFC 2217

In this way, the Convert Server of baud rate will be as the USR-VCOM to change at any time, and don't have to restart the Convert Server.If restart the Convert Server, baud rate and will come back to before.

5.6.4. Keepalive

V5.01D.01and above version of the firmware added keepalive when the TCP connection mechanism, so when the Convert Server of network anomalies, timely diagnose abnormal to the network and disconnect, when the network has resumed after, and just in time to connect to the server.

5.6.5. Multiple STA parameters

This function based on V5.01D.01 and above version of the firmware, in the sta mode, if can network signal is too low, it will automatically switch to the other AP network (switching network automatically restart).

This feature provides a signal threshold, when the current network signals is lower than the critical value, the Convert Server of automatic switching network and restart.If the signal value is set to 100, the Convert Server will not switch network.Even if the current network signal is not the current network will always search, not heavy to other networks.

The function of the specific Settings page refer to section 5.3.3.

5.6.6. Websocket

This Convert Server can realize the function of the websocket server, allowing serial real-time interaction with the web Convert Server, replace the previous HTTP GET, POST, corresponding faster. This Convert Server provides the corresponding websocket test page for user testing, specific page is as follows: (web

Page: 10.10.100.254/websocketen.html)

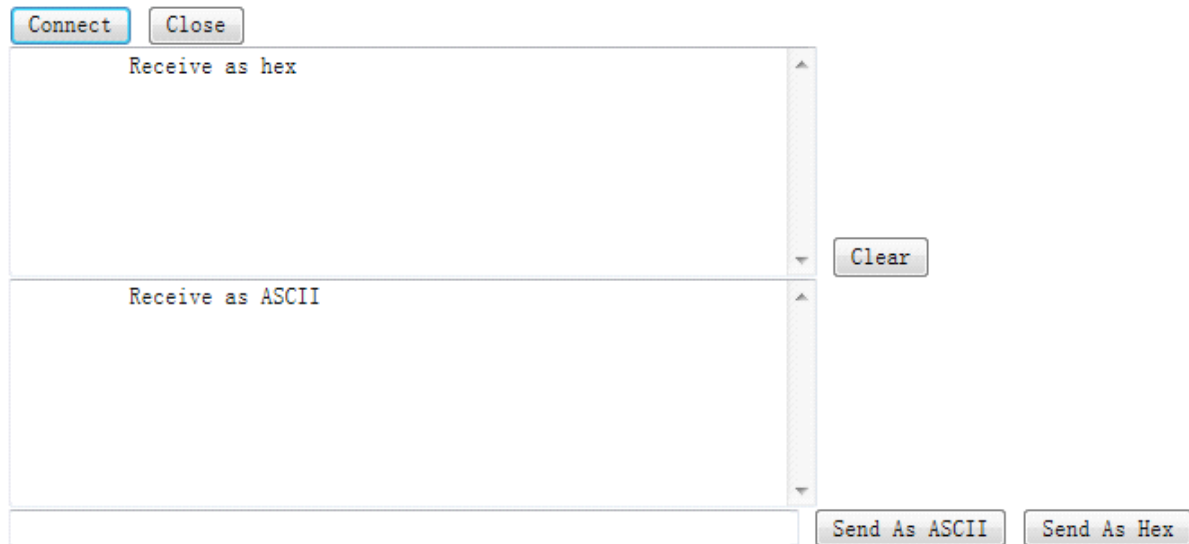


Figure 17 Websocket Page

Click on the "connect" page and then implements a connection, so a serial port with page can send or receive data from each other. This Convert Server websocket server support 8 client connection at the same time.

This function for web applications, and for web users with higher response speed, if you want to customize the corresponding web page, can connect your company.

5.6.7. Software flow control

V5.01.18 above version supports serial software flow control function, it can be set up in the web page can also use the AT instruction to set (specifically, please refer to the AT+UART directive). In the software flow control, the transmitted data must be visible ASCII characters, and if the non - visible characters can be transmitted to the software flow control.

5.6.8. Domain backup and Smart Station mode

V5.01.18 above version adds domain name backup function. After opening the function, when the module is connected the server which is the domain name. it will automatically save the IP address of the domain name, If it disconnect, and it don't even have a server for five minutes. (including unable to parse the IP domain or to resolve IP connection could not be established) automatically enabled standby IP connection.

This feature can be turned on or off in a web page, or AT instruction (AT+IPBUP).

V5.01.18 or more versions adds Smart Station function. If the module is in STA mode, and five minutes

without connecting to the router, then the module will automatically start its own AP function, and every 80 seconds to connect a router. This feature facilitates the user to continue with the wireless control module, or to set the parameters of the module.

This feature has been close.

5.7. Palmodic Signal

Base on selected factory default setting, “Ready” signal can have two output statuses:

- ✧ Status One: The Convert Server will output “0” after normal boot up. This signal used to judge if Convert Server finish boot up and ready for application.
- ✧ Status Two: The Convert Server will output “Palmodic Signal” after normal boot up. The palmodic signal is 0.5Hz square wave with dutyfactor 1:1. User can query this signal to judge if Convert Server is active “live” or need to re-boot. When Convert Server switches to command mode, it will output “0”, which used to distinguish work mode and command mode.

Notes:

This function is user selected factory setting and RELD instruction will not effective for this function. If user not requires this function, the default factory setting is Status One. Contact with USR Technology for more detailed support.

5.8. Parameters Configuration

Convert Server Convert Server supports two methods to configuration parameters: **Web Accessing** and **AT+instruction set.**

Web accessing means users can configure parameters through built-in webpage. When Convert Server Convert Server connected to wireless network, parameters configuration is done on a PC connected to the same wireless network. AT+instruction set configuration means user configure parameters through serial interface command. Refer to “AT+instruction set” chapter for more detail.

Notes:

USR can customized the parameters setting as customer request and ship Convert Server with these parameters as factory default configuration. It will reduce user’s Convert Server configuration time for mass production. Also, if user need different parameters setting for every Convert Server, USR can provide the auto-configuration tool to speed up the Convert Server configuration duration. Please contact USR technical interface to acquire this tool if required.

5.9. Firmware Upgrade

Convert Server supports firmware upgrade online.

6. setup process

6.1. Configuration via Web Accessing

When first use Convert Servers, user may need some configuration. User can connect to Convert Server's wireless interface with following default setting information and configure the Convert Server through laptop.

Web Access Default Setting

Parameters	Default Setting
SSID	USR-WIFI232-630_XXXX
IP Address	10.10.100.254
Subnet Mask	255.255.255.0
User Name	admin
Password	admin

6.1.1. Open Web Management Interface

Step 1: Connect laptop to SSID "USR-WIFI232-630_XXXX" of Convert Server via wireless LAN card;

Step 2: After wireless connection OK. Open browser and access "<http://10.10.100.254>";

Step 3: Then input user name and password in the page as following and click "OK" button.



Figure 18 Open Web Management page

The Convert Server web management page support English and Chinese language. User can select language environment at the top right corner and click "Apply" button.

The main menu include nine pages: "Quick Configure", "Mode Selection", "AP Interface Setting", "STA Interface Setting", "Application Setting", "Ethernet Setting", "HTTPD Client mode", "WEB IO" and "Device Management".

6.1.2. Quick Configure

This page provides users with a method of rapid configuration Convert Server. Users according to the steps to configure the parameters and restart the Convert Server page, you can let the Convert Server is normal work, reduced the configuration steps and time. Of course the options on this page is less, if some detailed configuration, still need to the corresponding configuration page.

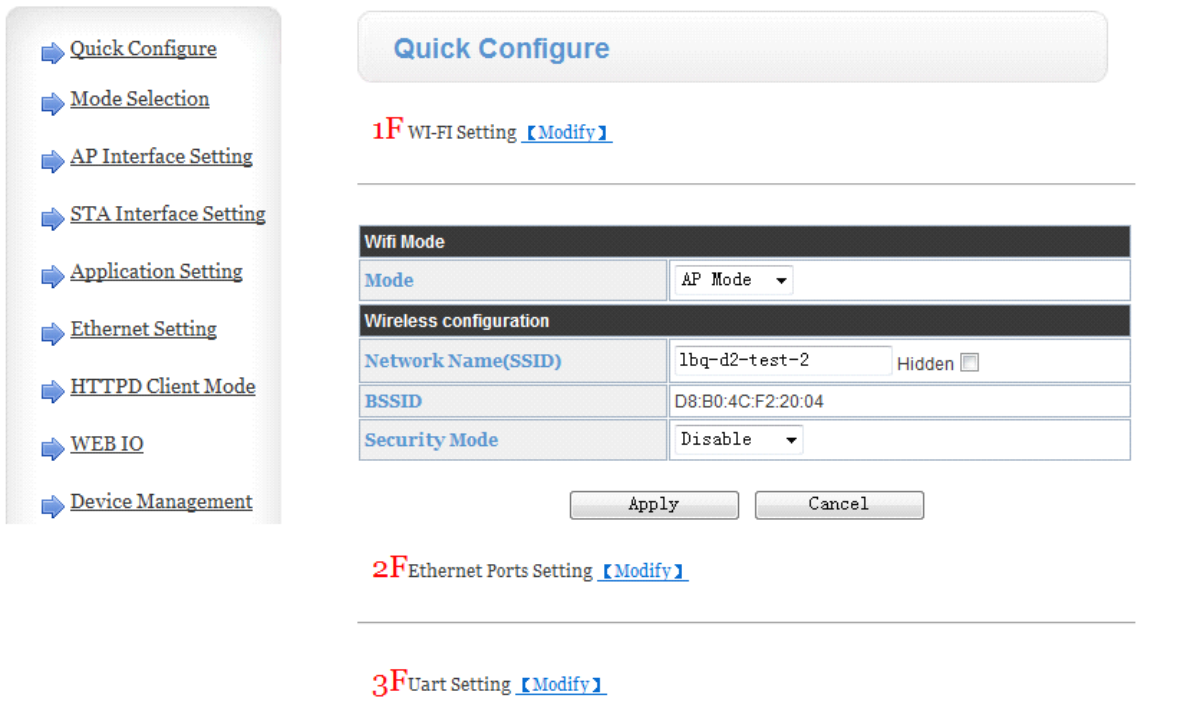


Figure 19 Quick Configure Page

This page has four configuration options and a restart, the corresponding instructions below:

- ◆ WI-FI Setting: set the working mode of wifi, AP mode or the STA.
- ◆ Ethernet Ports Setting: open/close the Ethernet ports, and set up the corresponding work mode.
- ◆ UART Setting: set serial port parameters, including baud rate, parity bit, 485 functions and so on.
- ◆ Network Setting: set network parameters, Only TCPA related parameters.
- ◆ Device Management: when after completion of the above parameters are configured, click reset Convert Server.

6.1.3. Mode Selection Page

This page use to setting the wireless networking mode (AP and STA mode).

"Data transmission mode" selection Convert Server working mode are "Transparent Mode", "Serial Command mode", "GPIO mode" and "HTTPD-Client Mode".

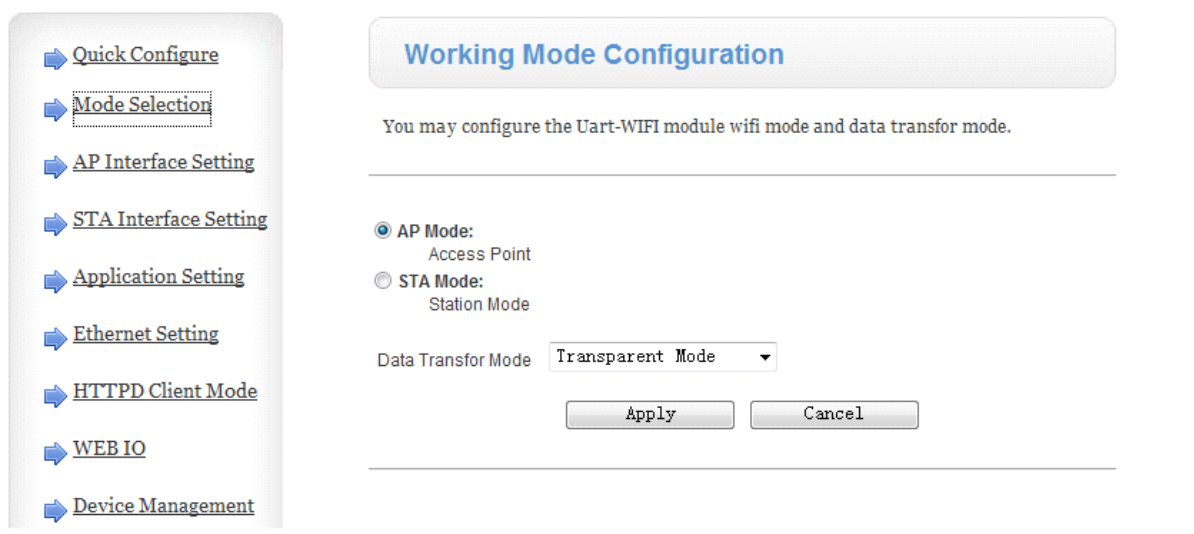


Figure 20 Mode Selection Page

6.1.4. AP Interface Setting Page

This page use to setting the parameters when Convert Server works as AP.

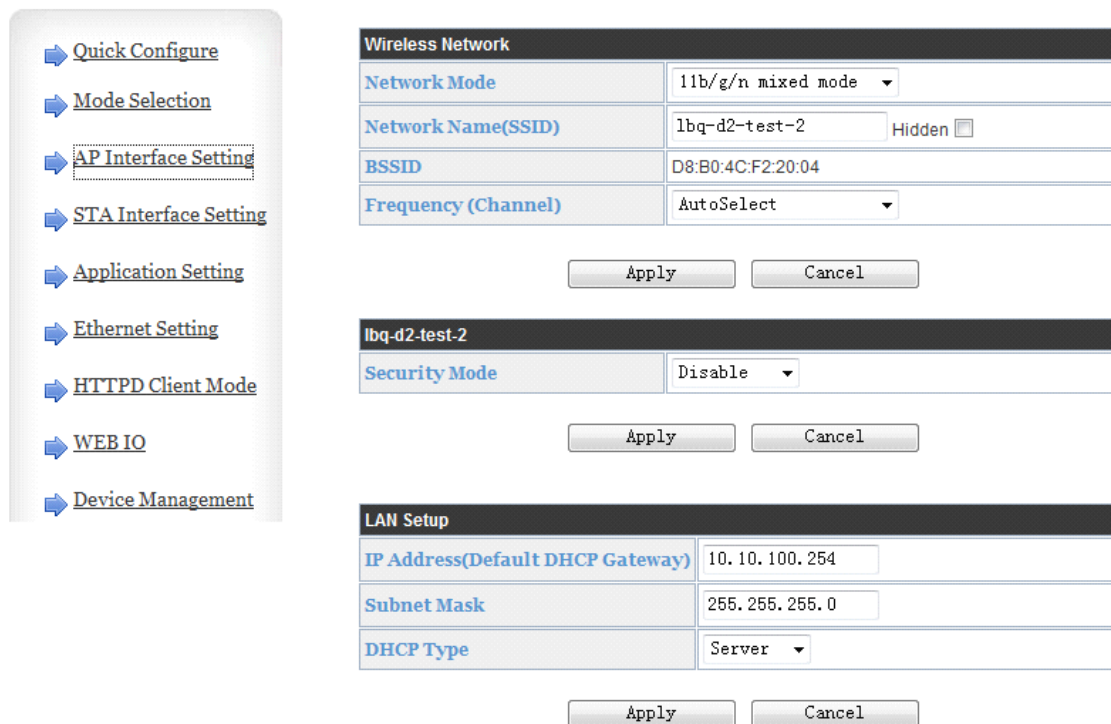


Figure 21 AP Interface Setting Page

6.1.5. STA Interface Setting Page

This page use to setting the parameters when Convert Server works as STA.

Such as SSID of AP which Convert Server need to connected, and also select the networking type: DHCP or static IP address.

Attention: This page has three STA settings, you can refer to fill one can also fill multiple, if fill in multiple, when connecting the current network signal is less than critical value when the signal, automatically switch to the next STA network (if only to fill a, please fill out the critical value is 100, otherwise it will be the broken network).

- ➔ [Quick Configure](#)
- ➔ [Mode Selection](#)
- ➔ [AP Interface Setting](#)
- ➔ [STA Interface Setting](#)
- ➔ [Application Setting](#)
- ➔ [Ethernet Setting](#)
- ➔ [HTTPD Client Mode](#)
- ➔ [WEB IO](#)
- ➔ [Device Management](#)

STA Interface Parameters	
AP1's SSID	<input type="text" value="USR-WIFI232-AP4"/> <input type="button" value="Search..."/>
MAC Address ₁ (Optional)	<input type="text"/>
Security Mode ₁	OPEN ▾
Encryption Type ₁	NONE ▾
AP2's SSID	<input type="text" value="USR-WIFI232-AP2"/> <input type="button" value="Search..."/>
MAC Address ₂ (Optional)	<input type="text"/>
Security Mode ₂	OPEN ▾
Encryption Type ₂	NONE ▾
AP3's SSID	<input type="text" value="USR-WIFI232-AP3"/> <input type="button" value="Search..."/>
MAC Address ₃ (Optional)	<input type="text"/>
Security Mode ₃	OPEN ▾
Encryption Type ₃	NONE ▾
Signal threshold	2 % Note: The signal is less than this value, Switching network

Figure 22 STA Interface Setting Page

6.1.6. Application Setting Page

This page is used to setting the parameters of serial port communication, such as UART setting, UART AutoFrame Setting, Ethernet function, Device ID setting and high layer network protocol setting which used support serial communication.

- ➔ [Quick Configure](#)
- ➔ [Mode Selection](#)
- ➔ [AP Interface Setting](#)
- ➔ [STA Interface Setting](#)
- ➔ [Application Setting](#)
- ➔ [Ethernet Setting](#)
- ➔ [HTTPD Client Mode](#)
- ➔ [WEB IO](#)
- ➔ [Device Management](#)

Uart Setting

Baudrate	57600 ▾
Data Bits	8 ▾
Parity	None ▾
Stop	1 ▾
CTSRTS	Disable ▾
485 mode	Disable ▾
Baudrate adaptive (RFC2117)	Enable ▾

UART AutoFrame Setting

UART AutoFrame	Disable ▾
----------------	-----------

Device ID setting

Device ID (0~65535)	1111
Send an ID when module connection is established	Enable ▾

Network A Setting

Mode	Server ▾
Protocol	TCP ▾
Port	8899
Server Address	10.10.100.100
MAX TCP Num. (1~32)	32
TCP Time out (MAX 600 s)	0
TCP connection password authentication	Disable ▾

Socket B Setting

Open the SocketB function	on ▾
Port	8899
Server Address	www.zhangkongbao.com
TCPB Time out (MAX 600 s)	0

Figure 23 Application Setting Page

Notes:

Generally, Network protocols support three modes: **TCP Server**, **TCP Client**, **UDP Server**, **UDP Client**. When the Convert Server is configured to UDP server side, the Convert Server will memory the UDP client end of the last communication, and communication with this UDP client. While the UDP client mode will only

with the target IP address and communication. When set to the TCP Server, do not need to enter the IP address. For other Settings, need to fill in the need to connect each other IP address. Fill in port with protocol port number, at the ends of the communication port number must be the same.

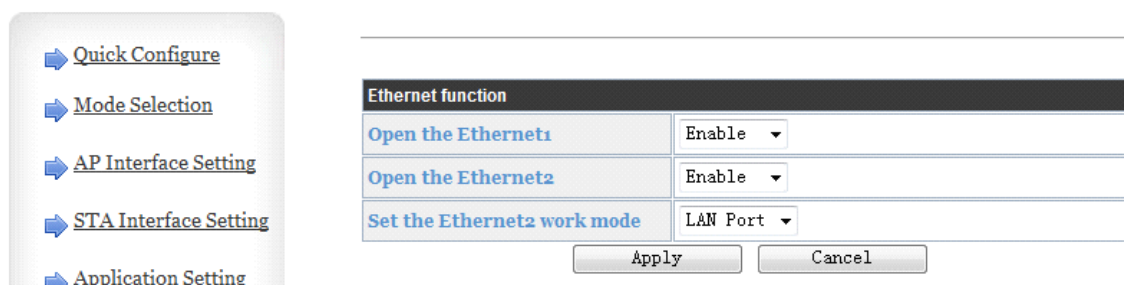
The Socket B only as a TCP client terminal to communicate with the server.

TCP connection password authentication: when the Convert Server in the TCP server mode, password authentication on the TCP client connect to.

Note: this verification is only in a Convert Server as a TCP server. After the opening, the TCP client connected Convert Server, the first data which sent to the Convert Server is password and carriage returns. The password is the password to login page default is "admin". Such as the default when sending the first data should be "0x61 0x64 0x6D 0x69 0x6E 0x0D 0x0A" (hex).

6.1.7. Ethernet Setting

This page is used to set two Ethernet front-end ports of the Convert Server, two Ethernet front-end ports can be open or closed. And so the second can be set to the WAN port to use, this Convert Server can be used as a secondary router, making it easy for users to network. Specific Settings page is as follows:



Ethernet function	
Open the Ethernet1	Enable
Open the Ethernet2	Enable
Set the Ethernet2 work mode	LAN Port

Apply Cancel

Figure 24 Ethernet Setting Page

6.1.8. HTTPD Client Mode

This page sets the HTTP header in the HTTPD Client mode. Include: the address of the server, the server port, request type, protocol header path, Connection, user-agent.

HTTPD Client mode support POST, PUT, GET three HTTP request types. Is a POST or PUT request way, serial data can be added to the back of the HTTP header; When the request is a GET, data can be added to the back of the path in the HTTP header. The specific way of sending data can consult section 4.2.4.

- ➡ [Quick Configure](#)
- ➡ [Mode Selection](#)
- ➡ [AP Interface Setting](#)
- ➡ [STA Interface Setting](#)
- ➡ [Application Setting](#)
- ➡ [Ethernet Setting](#)
- ➡ [HTTPD Client Mode](#)
- ➡ [WEB IO](#)
- ➡ [Device Management](#)

HTTPD-Client Mode

In HTTPD_Client mode, set the relevant parameters of HTTP

Note: HTTPD Client mode is used to communicate with HTTP Server. It encapsulate the serial data to be HTTP protocol data, then send to HTTP Server.

HTTPD Server address	<input type="text" value="10.10.100.100"/>
HTTPD Server port	<input type="text" value="80"/>
HTTPD Request Type	GET ▾
HTTPD Header path	<input type="text" value="/abcd"/>
HTTPD Header Connection	<input type="text" value="keep-alive"/>
HTTP Header User-Agent	<input type="text" value="lwip1.3.2"/>

Figure 25 HTTPD Client Mode Page

6.1.9. Device Management Page

This page use to manage Convert Server general setting, such as administrator setting, restart Convert Server button, restore factory default setting button, and update firmware through webpage.

- ➡ [Quick Configure](#)
- ➡ [Mode Selection](#)
- ➡ [AP Interface Setting](#)
- ➡ [STA Interface Setting](#)
- ➡ [Application Setting](#)
- ➡ [Ethernet Setting](#)
- ➡ [HTTPD Client Mode](#)
- ➡ [WEB IO](#)
- ➡ [Advanced](#)
- ➡ [Device Management](#)

Device Management

5.01.10

You may configure administrator account and password, load default setting or update firware.

Administrator Settings

Account	<input type="text" value="admin"/>
Password	<input type="text" value="admin"/>

Restart Module

Restart Module	<input type="button" value="Restart"/>
----------------	--

Load Factory Defaults

Load Default Button	<input type="button" value="Load Default"/>
---------------------	---

Update Firmware

Location:	<input type="button" value="选择文件"/> 未选择任何文件
-----------	--

Figure 26 Device Management Page

Notes:

Restart module button: When you setting the parameters of different web pages, you will click “Apply” button to confirm the setting, but the setting take effect only after user click the “Restart” button here, the Convert Server will re-boot up and refresh the memory information with new changes.

Appendix A: Questions and Answers

Q1: How to configure transparent serial port application (TCP protocol) with two Convert Servers?

➤ Network structure as below figure:

■ Convert Server 1# Setting:

- ✧ Works as AP mode; --See "Mode Selection Page"
- ✧ LAN IP address: 10.10.100.254; --See "AP Interface Setting Page"
- ✧ Network Protocol: TCP/Server, Port ID: 8899; -- See "Application Setting Page"
(Convert Server default setting);

■ Convert Server 2# Setting:

- ✧ Works as STA mode; --See "Mode Selection Page"
- ✧ WAN connection type: DHCP or Static IP (For this example: 10.10.100.100)

--See "STA

Interface Setting Page"

- ✧ Network Protocol: TCP/Client, Port ID: 8899; Application IP address: Convert Server 1#'s LAN IP address (10.10.100.254); -- See "Application Setting Page"
- ✧ **Notes:** When Convert Server 2# works as STA mode, Convert Server's WiFi interface works as WAN port. Convert Server's WAN IP address and LAN IP address shall be setting different segment. So, Convert Server 2#'s LAN IP address must change to other segment; (For this sample, we change to 10.10.99.254); --See "AP Interface Setting Page"

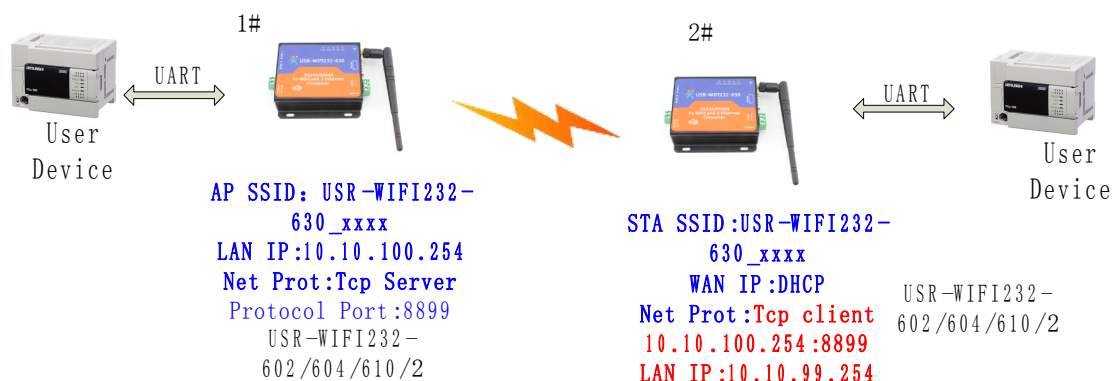


Figure 27 Configure Transparent Serial Port Connection (TCP)

Q2: Where to Set WIFI Convert Server LAN IP and WAN IP through Web Page?

- USR-WIFI232-D2 Wireless LAN IP address setting see “AP Interface Setting Page” as below Figure,

LAN Setup	
IP Address	10.10.100.254
Subnet Mask	255.255.255.0
MAC Address	88:8B:5D:70:04:87
DHCP Type	Server
Default DHCP Gateway	10.10.100.254

Figure 28 Convert Server LAN IP Setting

- USR-WIFI232-D2 Wireless WAN IP address setting see “STA Interface Setting Page” as below Figure, User can set WAN connection type to DHCP and STATIC IP.

WAN Connection Type: STATIC (fixed IP)

Static Mode	
IP Address	10.10.99.254
Subnet Mask	255.255.0.0
Default Gateway	10.10.99.254

Figure 29 Convert Server WAN IP Setting

Q3: How to configure transparent serial port application (UDP protocol) with two Convert Servers?

- Network structure as below figure:

■ Convert Server 1# Setting:

- ✧ Works as AP mode; --See “Mode Selection Page”
 - ✧ LAN IP address: 10.10.100.254; --See “AP Interface Setting Page”
 - ✧ Network Protocol:UDP, Port ID: 8899; Application IP address:10.10.100.100;
- See “Application Setting Page”

■ Convert Server 2# Setting:

- ✧ Works as STA mode; --See “Mode Selection Page”
- ✧ WAN connection type: Static IP (10.10.100.100)

--See “STA

Interface Setting Page"

- ✧ Network Protocol:UDP, Port ID: 8899; Application IP address: Convert Server 1#'s LAN IP address (10.10.100.254);
-- See "Application Setting Page"
- ✧ LAN IP address: 10.10.99.254 (Different net segment with WAN port)
--See "AP Interface Setting Page"

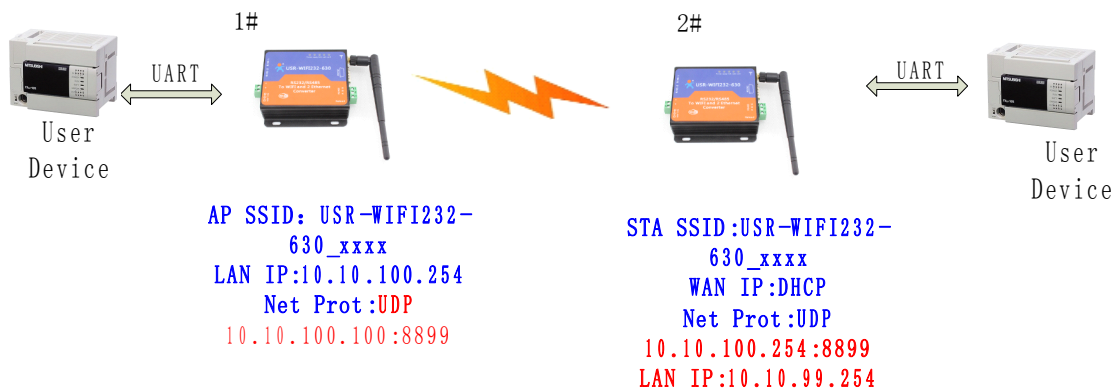


Figure 30 Configure Transparent Serial Port Connection (UDP)

Q4: Where to set Convert Server network protocol (TCP/UDP)?

➤ USR-WIFI232-D2 network protocol setting see "Application Setting Page" as below Figure,

- Protocol: TCP Server
 - ✧ Only Port ID required: 8899 (Default)

Net Setting	
Mode	Server
Protocol	TCP
Port	8899
IP Address	10.10.10.100
TCP Time out (MAX 600 s)	300

Figure 31 Convert Server Network Protocols: TCP/Server

- Protocol: TCP Client
 - ✧ Application IP address required: it's target TCP server 's IP address;
 - ✧ Port ID required: 8899 (Default)

Net Setting	
Mode	Client
Protocol	TCP
Port	8899
IP Address	10.10.10.100
TCP Time out (MAX 600 s)	300

Figure 32 Convert Server Network Protocol: TCP/Client

- Protocol: UDP
 - ✧ No Server/Client selection required;
 - ✧ Application IP address required: it's target device 's IP address;
 - ✧ Port ID required: 8899 (Default)

Net Setting	
Mode	Client
Protocol	UDP
Port	8899
IP Address	10.10.10.100

Figure 33 Convert Server Network Protocol: UDP

Q5: How to configure transparent serial port application: Two Convert Servers all configured as STA and connection through AP?

➤ Network structure as below figure:

- Convert Server 1# Setting: (We use USR-WIFI232-D2 as AP for this example)
 - ✧ Works as AP mode and all default setting;
- Convert Server 2# Setting:
 - ✧ Works as STA mode; --See "Mode Selection Page"
 - ✧ WAN connection type: Static IP: 10.10.100.100; --See "STA Interface Setting Page"
 - ✧ Network Protocol: TCP/Server, Port ID: 8899; -- See "Application Setting Page"
 - ✧ LAN IP address: 10.10.99.254 (Different net segment with WAN port);
--See "AP Interface Setting Page"
- Convert Server 3# Setting:
 - ✧ Works as STA mode; --See "Mode Selection Page"
 - ✧ WAN connection type: Static IP: 10.10.100.101; --See "STA Interface Setting Page"
 - ✧ Network Protocol: TCP/Client, Port ID: 8899; Application IP address: Convert Server 2#'s WAN IP address (10.10.100.100); -- See "Application Setting Page"

- ✧ LAN IP address: 10.10.98.254 (Different net segment with WAN port);

--See "AP Interface Setting Page"

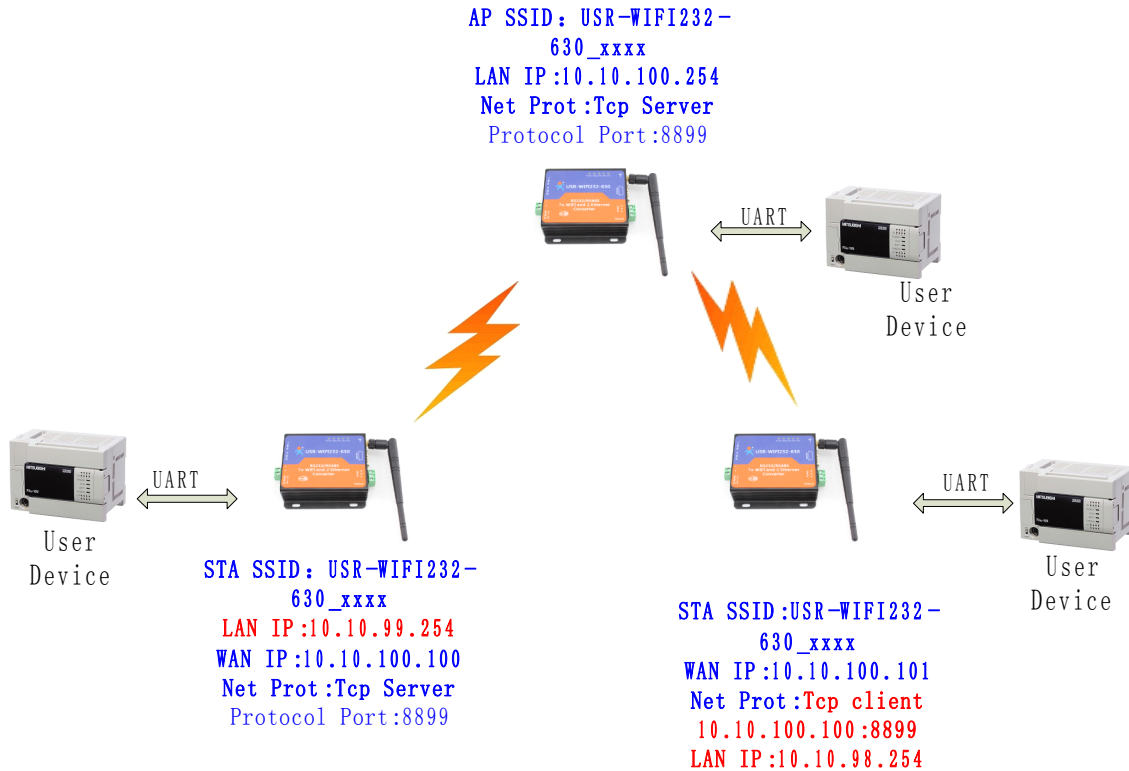


Figure 34 Two Convert Servers Connection Through AP

Q6: How to avoid IP address conflict when apply Convert Server?

- The following address allocation method can avoid the IP address conflict for dynamic and static IP address mixed application.
 - Convert Server dynamic IP address range from 100 to 200 for last IP address segment.
 - ✧ Such as default IP: 10.10.100.254. When Convert Server works as AP, the IP address Convert Server can allocate to STA is from 10.10.100.100 to 10.10.100.200;
 - So, if user needs to set static IP for dedicated STA internal network, the available IP address range can start from 10.10.100.1 to 10.10.100.99.

Q7: PC works as server, all Convert Servers works as data acquisition card and connect with PC, how to configure this application?

- Network structure as below figure: Three Convert Server setup 3 TCP links with PC server. Convert Server 1# works as AP and all devices connect to Convert Server 1# through WiFi interface;

- **PC Setting:**
 - ✧ IP address: 10.10.100.100;
 - ✧ Network Protocol:TCP/Server, Port ID: 8899;
- **Convert Server 1# Setting:**
 - ✧ Works as AP mode;
 - ✧ LAN IP address: 10.10.100.254;
 - ✧ Network Protocol:TCP/Client, Port ID: 8899; Application IP address:10.10.100.100;
- **Convert Server 2# Setting:**
 - ✧ Works as STA mode;
 - ✧ WAN connection type: Static IP: 10.10.100.101;
 - ✧ Network Protocol:TCP/Client, Port ID: 8899; Application IP address:10.10.100.100;
 - ✧ LAN IP address: 10.10.99.254 (Different net segment with WAN port);
- **Convert Server 3# Setting:**
 - ✧ Works as STA mode;
 - ✧ WAN connection type: Static IP: 10.10.100.102;
 - ✧ Network Protocol:TCP/Client, Port ID: 8899; Application IP address:10.10.100.100;
 - ✧ LAN IP address: 10.10.98.254 (Different net segment with WAN port);

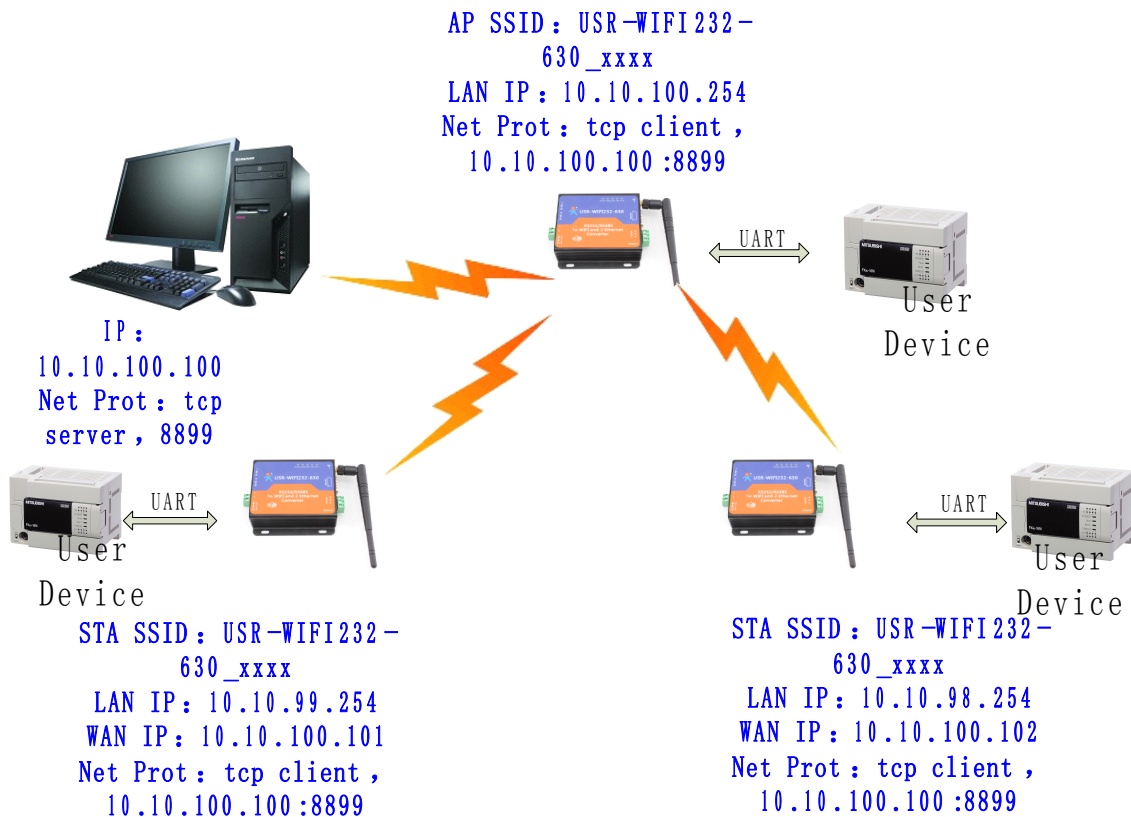


Figure 35 Wireless Data Acquisition Card Setting

Q8: Convert Server support UDP multicast?

At present, all the Convert Server does not support UDP multicast function, IP multicast address range is "224.0.0.0~ 239.255.255.255", When setting Convert Server, please don't set this IP section, if set, may cause the Convert Server can't normal start.

Q9: Convert Server operates in STA mode, the PC how to get the IP Convert Server?

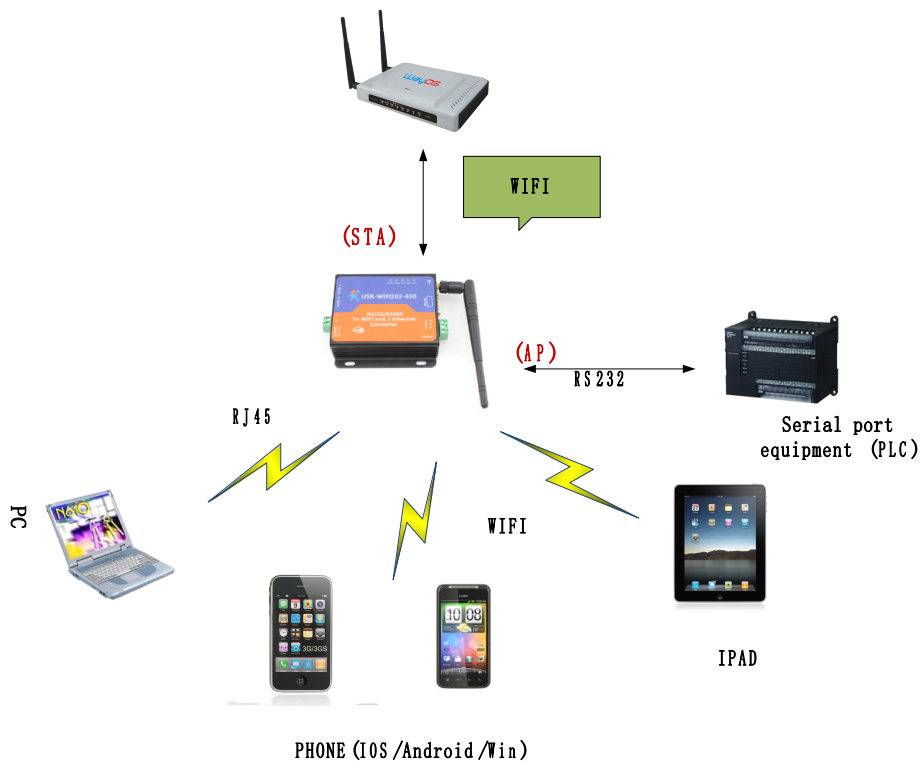
All Convert Server supports UDP search, they will return to their respective IP, MAC, MID, detailed search process is as follows:

1. PC via UDP broadcast (broadcast address: xx.xx.xx.255, Port: 48899) sent a password, the default password is: "HF-A11ASSISTHREAD", the password can be used AT commands (AT + FASWD) set up, it's Up to 100 bytes.

- After the Convert Server receives a password, if the password is correct, to the address (Unicast, Port: 48899) sends local IP address and MAC address and name of the Convert Server. (IP, MAC, MID as 10.10.100.254,888 B5D0000E2, guxin).

So you can get to the IP address of the Convert Server.

Q10:Servers use wireless switch



- The module is opened in AP+STA mode: AT commands to send AT+FAPSTA=on and AT+FVER=z to the module, received the correct response, restore factory settings.
- Module Will join the router ,Webpage settings page as follows:

[Quick Configure](#)

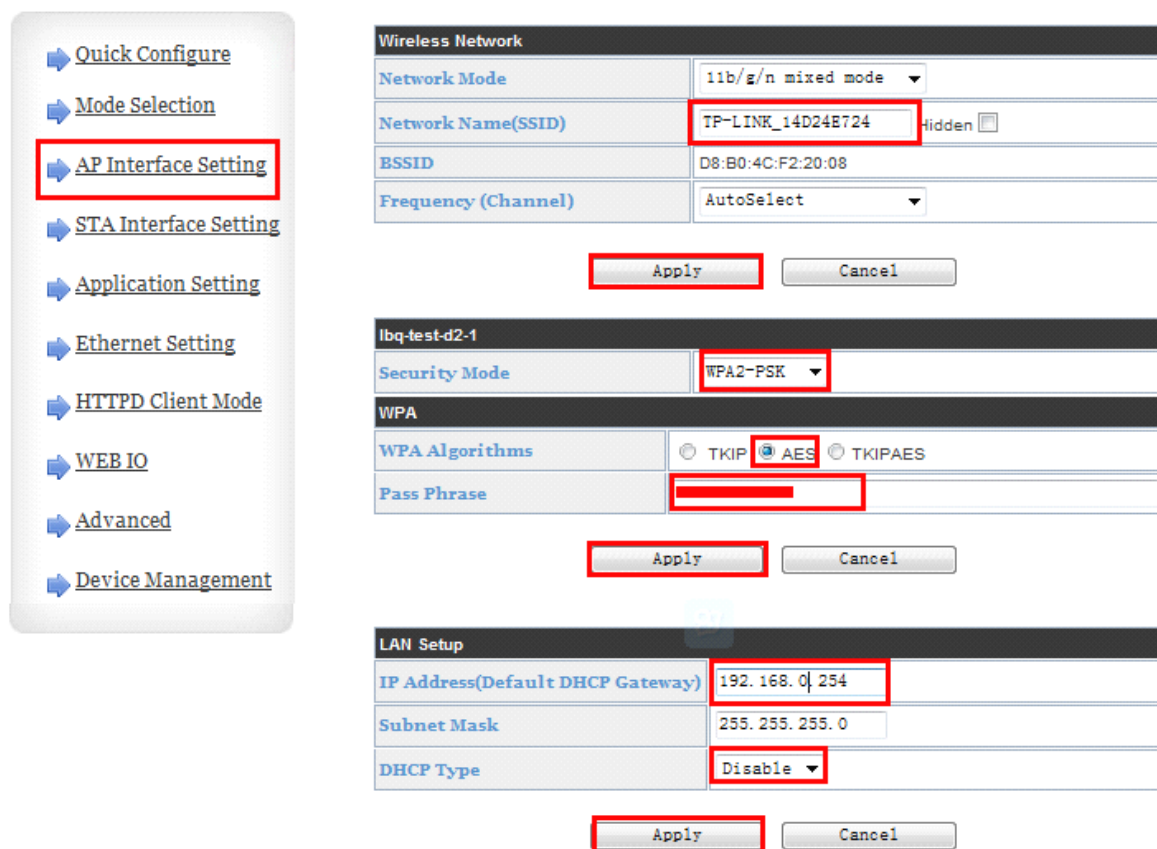
[Mode Selection](#)

[AP Interface Setting](#)

[STA Interface Setting](#)

STA Interface Parameters	
AP's SSID	<div style="border: 1px solid red; padding: 2px;">10.10.100.254</div> <div style="border: 1px solid red; padding: 2px;">Search...</div>
MAC Address1 (Optional)	<input type="text"/>
Security Mode1	WPA2PSK ▼
Encryption Type1	AES ▼
Pass Phrase1	<div style="border: 1px solid red; padding: 2px;">12345678</div>
Signal threshold	<div style="border: 1px solid red; padding: 2px;">100</div> % Note: The signal is less than this value, Switching network
<div style="border: 1px solid red; padding: 5px; display: inline-block; margin-right: 10px;">Apply</div> <div>Cancel</div>	

3. AP's SSID and password changes into the router SSID and password, turn off the DHCP, and the LAN address changes into the router segment specific settings page is as follows:



Wireless Network

Network Mode	11b/g/n mixed mode
Network Name(SSID)	TP-LINK_14D24E724 <input type="checkbox"/> Hidden
BSSID	D8:B0:4C:F2:20:08
Frequency (Channel)	AutoSelect

Apply Cancel

WPA

Security Mode	WPA2-PSK
WPA Algorithms	<input type="radio"/> TKIP <input checked="" type="radio"/> AES <input type="radio"/> TKIPAES
Pass Phrase	[Redacted]

Apply Cancel

LAN Setup

IP Address(Default DHCP Gateway)	192.168.0.254
Subnet Mask	255.255.255.0
DHCP Type	Disable

Apply Cancel

Note: Every click "Apply", page will jump. Customer needs to re-entered the following settings page.

Appendix B: Contact

Company: Jinan USR IOT Technology Limited
 Address: 11th Floor, No.1 Building, Aosheng Square, No.1166 Xinluo Street, Jinan, China
 Tel: 86-531-55507297, 86-531-88826739
 Web: <http://www.usriot.com>
 Support : <http://h.usriot.com>
 Email: sales@usr.cn

Appendix C: Disclaimer

This document provides information about RS232/RS485 TO RJ45&WIFI CONVERT SERVER, this document does not grant any license to intellectual property rights. Except the responsibility declared in the product sale clause, USR does not assume any other responsibilities. In addition, USR does not make any warranties for the sale and use of this product, including the suitability of the product for a particular purpose,

merchantability or fitness for any patent, copyright or other intellectual property infringement, etc. USR may make changes to specifications and product descriptions without notice.

Appendix D: Update History

2015-01-09 V1.0.0 Created

2015-01-09 V1.0.1 Modify the minimum temperature - 40

2015-05-16 V1.0.2 Increase customer support center link, remove WAPI encryption.

2015-05-29 V1.0.3

Increase the Modbus TCP <=> Modbus RTU function.

Increase the software flow control

Add DNS IP backup function, increase the STA model protection function

2015-05-29 V1.0.4

Amend the company address. Modify some describe errors